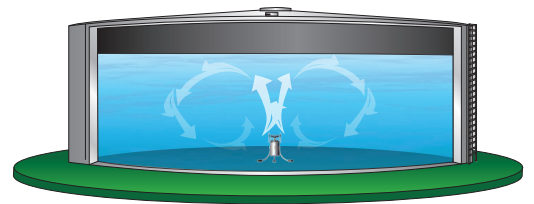


## CertiSafe™ Mixers



### BENEFITS OF A POWERFUL, ACTIVE MIXER

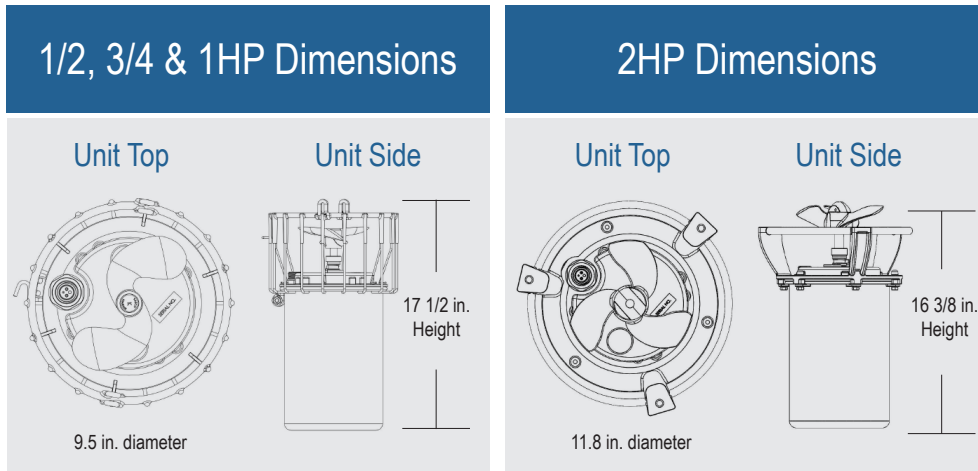
- Improves water quality
- Eliminates ice formation
- Minimizes residual loss
- Reduces thermal and chemical stratification
- Reduces differences in water taste and odor
- Reduces nitrification risk in chloraminated water
- Lowers the rate of disinfection by-product (DBP)
- Lowers the rate of sediment accumulation



# UNIT SPECIFICATIONS

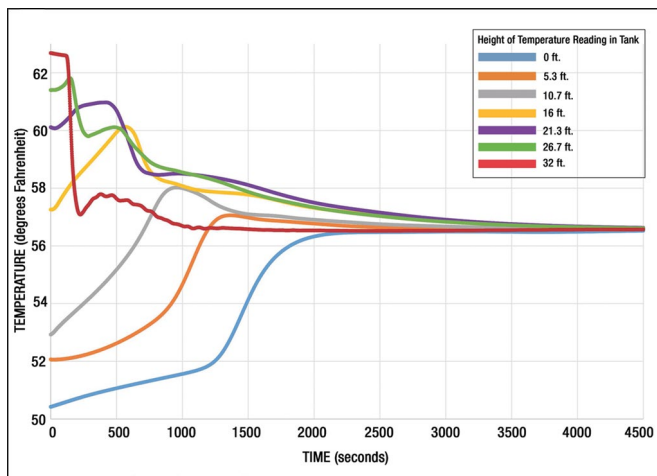
Sizes Available	1/2HP, 3/4HP, 1HP and 2HP
Electrical Requirements	120V, single phase, 60Hz (1/2HP, 3/4HP and 1 HP) 208-240V, single phase, 60Hz (3/4HP, 1HP and 2HP)
Lubrication	Food-grade mineral oil
Cord Lengths	Stub (32 in.), 50 ft., 100 ft., 200 ft.

# UNIT DIMENSIONS

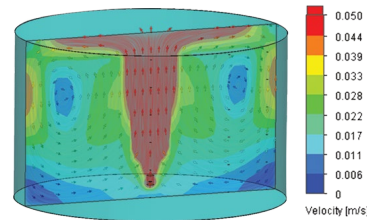


# MIXING CAPABILITIES

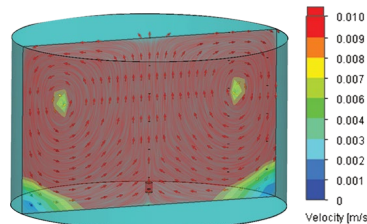
Computational fluid dynamics (CFD) and test results using a 3400C61 CertiSafe™ mixer to mix a .5 million gallon tank



Results from thermal testing shows all layers of the tank converged within 40 minutes



Velocity representation



CFD indicating tank can be thoroughly mixed over time

# MOUNTING

Install Kasco's CertiSafe™ mixer in elevated and ground storage tanks with the available floor mount, pipe mount and suspended mounting options.



Pipe Mount

Floor Mount

# CONTROL & MONITORING

UL LISTED CS-100 (120Volt) and CS-200 (240Volt) control panels are designed for easy installation and operation. Both include an H-O-A operator switch, LED indicator lights, SCADA I/O for remote control and monitoring, and automatic shut off feature if tank level drops below operating level.



# Kasco®

Moving Water Forward, Since 1968

[kascomarine.com](http://kascomarine.com)

© Kasco Marine, Inc 01/2019