

3/4HP & 1HP

J SERIES FOUNTAINS

- Premium Nozzles available (purchased separately)
- 120V and 208-240V, single phase
- 3/4HP operates in as little as 17.5 in. of water
- 1HP operates in as little as 19 in. of water
- Control panels feature human-rated GFCI protection



5 Patterns
Included



Premium Nozzles
Available



Optional Lighting
Packages



2-Year Warranty



ETL Listed to UL &
CSA Standards

3/4HP Packages

CORD LENGTH	50 FT	100 FT	150 FT	200 FT	250 FT	300 FT	400 FT	500 FT
120V PACKAGES								
PART #	3400JF050	3400JF100	3400JF150	3400JF200	-	-	-	-
MSRP	\$1,957	\$2,135	\$2,691	\$2,940	-	-	-	-
208-240V PACKAGES								
PART #	3400HJF050	3400HJF100	3400HJF150	3400HJF200	3400HJF250	3400HJF300	3400HJF400	3400HJF500
MSRP	\$3,373	\$3,503	\$4,121	\$4,317	\$4,405	\$4,507	\$4,979	Inquire

1HP Packages

CORD LENGTH	50 FT	100 FT	150 FT	200 FT	250 FT	300 FT	400 FT	500 FT
120V PACKAGES								
PART #	4400JF050	4400JF100	4400JF150	4400JF200	-	-	-	-
MSRP	\$2,371	\$2,997	\$3,655	\$4,011	-	-	-	-
208-240V PACKAGES								
PART #	4400HJF050	4400HJF100	4400HJF150	4400HJF200	4400HJF250	4400HJF300	4400HJF400	4400HJF500
MSRP	\$3,901	\$4,036	\$4,715	\$4,930	\$5,147	\$5,254	\$5,366	Inquire

Product Notes:

1. Prices in bold have quick disconnect installed on power cords.
2. 3/4 and 1HP, 120V options include C-25 control panel.
3. 3/4 and 1HP, 208-240V options include C-85 control panel.
4. Control panels allow timing and lights to be managed from shore.



2HP & 3HP

J SERIES FOUNTAINS

- Premium Nozzles available (purchased separately)
- 208-240V, single and three phase options
- 2HP operates in as little as 20 in. of water
- 3HP operates in as little as 24 in. of water
- Control panels feature human-rated GFCI protection



5 Patterns
Included



Premium Nozzles
Available



Optional Lighting
Packages



3-Year Warranty - 2HP Units*
5-Year Warranty - 3HP Units



ETL Listed to UL &
CSA Standards

2HP Packages

CORD LENGTH	50 FT	100 FT	150 FT	200 FT	250 FT	300 FT	400 FT	500 FT
SINGLE PHASE								
PART #	8400JF050	8400JF100	8400JF150	8400JF200	8400JF250	8400JF300	8400JF400	8400JF500
MSRP	\$5,651	\$6,059	\$6,182	\$6,349	\$6,545	\$7,452	\$10,412	Inquire
THREE PHASE								
PART #	2.3JF050	2.3JF100	2.3JF150	2.3JF200	2.3JF250	2.3JF300	2.3JF400	2.3JF500
MSRP	\$8,974	\$9,220	\$9,524	\$9,790	\$10,412	\$10,905	\$12,559	Inquire

3HP Packages

CORD LENGTH	50 FT	100 FT	150 FT	200 FT	250 FT	300 FT	400 FT	500 FT
SINGLE PHASE								
PART #	3.1JF050	3.1JF100	3.1JF150	3.1JF200	3.1JF250	3.1JF300	3.1JF400	3.1JF500
MSRP	\$6,550	\$7,004	\$7,170	\$7,840	\$8,392	\$8,730	\$11,282	Inquire
THREE PHASE								
PART #	3.3JF050	3.3JF100	3.3JF150	3.3JF200	3.3JF250	3.3JF300	3.3JF400	3.3JF500
MSRP	\$9,319	\$9,564	\$9,869	\$10,417	\$10,756	\$12,006	\$12,908	Inquire

* Extended warranty available on 2HP units.

Product Notes:

1. Prices in bold have quick disconnect installed on power cords.
2. 2HP, single phase options include C-85 control panel. 3HP, single phase options include C-95 control panel.
3. 2 and 3HP, three phase options include CF-3235 control panel.
4. Control panels allow timing and lights to be managed from shore.
5. 460-480V, three phase options available for special order in approved locations only. Contact Kasco for details.



5HP & 7.5HP

J SERIES FOUNTAINS

- Premium Nozzles available (purchased separately)
- 208-240V, 5HP available as single and three phase
- 208-240V, 7.5HP available only as three phase
- 5HP operates in as little as 26 in. of water
- 7.5HP operates in as little as 28 in. of water
- One-piece, stainless steel hex bottom screen is easy to install and clean, and helps prevent clogging from debris
- Control panels feature human-rated GFCI protection



5 Patterns
Included



Premium Nozzles
Available



Optional Lighting
Packages



5-Year Warranty



ETL Listed to UL &
CSA Standards

5HP Packages

CORD LENGTH	100 FT	150 FT	200 FT	250 FT	300 FT	400 FT	500 FT
SINGLE PHASE							
PART #	5.1JF100	5.1JF150	5.1JF200	5.1JF250	5.1JF300	5.1JF400	5.1JF500
MSRP	\$8,195	\$9,154	\$9,868	\$11,204	\$13,382	\$14,477	Inquire
THREE PHASE							
PART #	5.3JF100	5.3JF150	5.3JF200	5.3JF250	5.3JF300	5.3JF400	5.3JF500
MSRP	\$10,258	\$10,902	\$11,654	\$12,063	\$14,752	\$16,053	Inquire

7.5HP Packages

CORD LENGTH	100 FT	150 FT	200 FT	250 FT	300 FT	400 FT	500 FT
THREE PHASE							
PART #	7.3JF100	7.3JF150	7.3JF200	7.3JF250	7.3JF300	7.3JF400	7.3JF500
MSRP	\$10,622	\$11,505	\$12,068	\$13,911	\$14,955	\$17,554	Inquire

Product Notes:

1. Prices in bold have quick disconnect installed on power cords.
2. 5HP, single phase units include C-95 control panel. 5HP, three phase units include CF-3235 control panel.
3. 7.5HP, three phase units include CF-3075 control panel.
4. Control panels allow timing and lights to be managed from shore.
5. 460-480V, three phase options available for special order in approved locations only. Contact Kasco for details.



PREMIUM NOZZLES

J SERIES FOUNTAINS

Further define your J Series experience with a Premium Nozzle, now available for all HP sizes. Purchased separately, Kasco Premium Nozzles provide crisp and distinct streams of water for dramatic and attention-demanding displays.



Available for ALL
J Series Fountains



4 Pattern Choices for
3/4 & 1HP Units



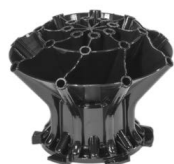
5 Pattern Choices for
2, 3, 5 & 7.5HP Units



Simple Twist-and-Lock
Installation



Purchased
Separately



Mighty Oak



Magnolia



Mahogany



Madrone



Palm

PATTERN	NEW - 3/4 & 1HP PART NUMBERS & DIMENSIONS (H x W) (FT.)				2, 3, 5 & 7.5HP PART NUMBERS & DIMENSIONS (H x W) (FT.)					
	PART #	3/4HP - NEW	1HP - NEW	MSRP	PART #	2HP	3HP	5HP	7.5HP	MSRP
Mighty Oak	431335K	10 x 24	13 X 34	\$140	841335K	14.5 x 40	19.5 x 51	24.5 x 58	27 x 60	\$295
Magnolia	431325K	9 x 29	11.5 x 37	\$140	841325K	13.5 x 44	18 x 60	23.5 x 72	26 x 80	\$295
Mahogany	431345K	11.5 x 28	14 x 34	\$140	841345K	16 x 40	21 x 58	28 x 64	29 x 72	\$295
Madrone	431330K	11.5 x 28	14 x 35	\$140	841330K	15 x 43	20 x 59	24 x 70	26 x 75	\$295
Palm	-	-	-	-	841320K	12 x 26	16 x 36	20.5 x 40	22 x 42	\$295