

C-85 & C-95 CONTROL PANEL INSTRUCTIONS

Important - Read Carefully Before Installation

Read and follow all instructions provided with this panel and the instructions provided with your Aerator/Fountain. Test ground fault circuit protection devices with the test button after installation and every 30 days thereafter.

STEP ONE:

Inspect the panel for any damage and any components that may have loosened during shipping.

Control panel must be installed a minimum of 5ft. (3m in Canada) from the inside wall of the pond, unless separated from the body of water by a fence, wall, or other permanent barrier that will make the unit inaccessible to persons in the water.

Install the control panel to a post structure. This structure must support the panel and prevent movement/flexing of the panel. Use #10 x 1" or longer screws in the mounting points of the control panel to secure to the post structure. NOTE: The control panel must be hung upright in order to be waterproof. It is also advised to mount the panel out of direct sunlight if possible. Mounting the panel in a North direction will prevent heat buildup inside the panel. Also, mount the panel above the potential flood plain to prevent water entry during a possible flood event.

STEP TWO:

Electrical Wiring:

Follow all local and national electrical codes for this installation and consult a qualified electrician or service person.

All electrical connections to this panel must be made with proper strain relief cord grip fittings or with conduit connections as required by local and national electric codes. The bottom of the enclosure is reserved for field installation of these connections.


Incoming Power Connection: (Power Feed)

This control panel requires a 240V or 208V - 4 wire service (L1, L2, N, & G) and must be fed with a power circuit protected by a circuit breaker or a fused disconnect switch to provide circuit protection and a disconnection means.

C-85 panel requires at least a 30 amp protected circuit feeding the panel.

C-95 panel requires at least a 40 amp protected circuit feeding the panel.


Connect your power feed as detailed in the wiring diagram provided with this panel.

L1 connects to Terminal	#1
L2 connects to Terminal	#2
N connects to Terminal	#3
 connects to Terminal	GROUND - located on chassis plate

Be sure to provide adequate sized power conductors to prevent excessive voltage drop. Consult with your electrician to properly size power feed conductors. Use copper conductors only.

Aerator Power Cord Connection:


Your aerator (pump) will be provided with a flexible power cord for connection to this control panel.

Black connects to Terminal	#4
White connects to Terminal	#5
Green connects to Terminal	

Light Kit Connection:

If you purchased a Kasco Light Kit for your aerator, follow the light kit installation instructions for mounting the light kit to the aerator float.

This control panel requires a hardwire connection for the light kit. To connect the light kit you will need to cut off the power cord plug that is molded to the light kit power cord. The power cord conductors (black, white, green) will need to be stripped back 1/2". The outer black jacket should be stripped back at least 3".

Black connects to Terminal	#6
White connects to Terminal	#7
Green connect to Terminal	

STEP THREE:

Set time clocks to the desired ON and OFF times per the digital timer setting instructions. Once all power connections are completed, and the time clocks are set, power can be applied to the panel.

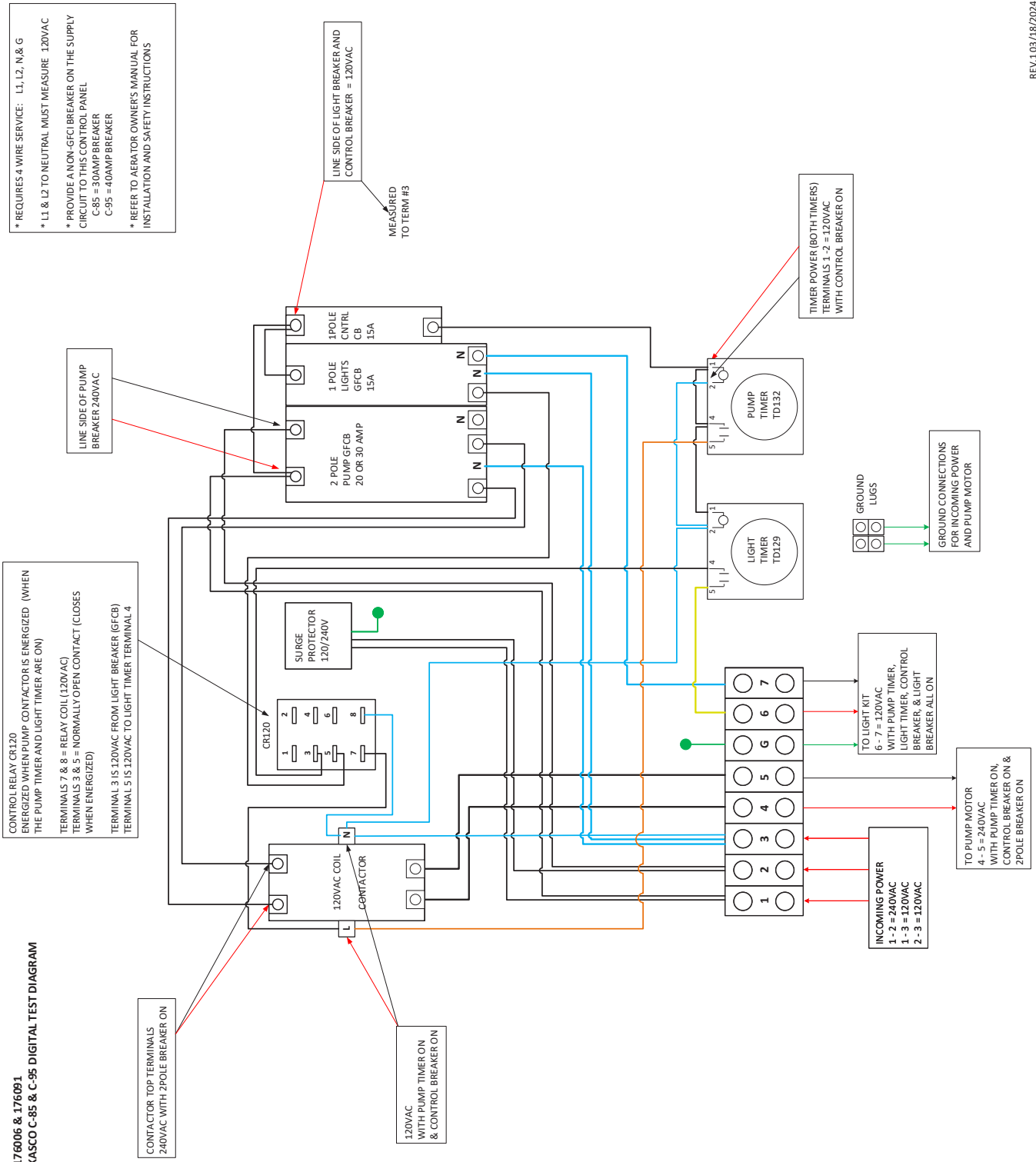
Record the following data while the aerator is operating in the water under load:

Voltage:	Amperage:
L1-L2 _____	L1 _____
L1-N _____	L2 _____
L2-N _____	Date installed ____/____/____

Any unauthorized modifications to this control panel will void the UL listing and Kasco warranty.



176006 & 176091
KASCO C-85 & C-95 DIGITAL TEST DIAGRAM



- * REQUIRES 4 WIRE SERVICE: L1, L2, N & G
- * L1 & L2 TO NEUTRAL MUST MEASURE 120VAC
- * PROVIDE A NON-GFCI BREAKER ON THE SUPPLY CIRCUIT TO THIS CONTROL PANEL
- C-85 = 30AMP BREAKER
- C-95 = 40AMP BREAKER
- * REFER TO AERATOR OWNER'S MANUAL FOR INSTALLATION AND SAFETY INSTRUCTIONS