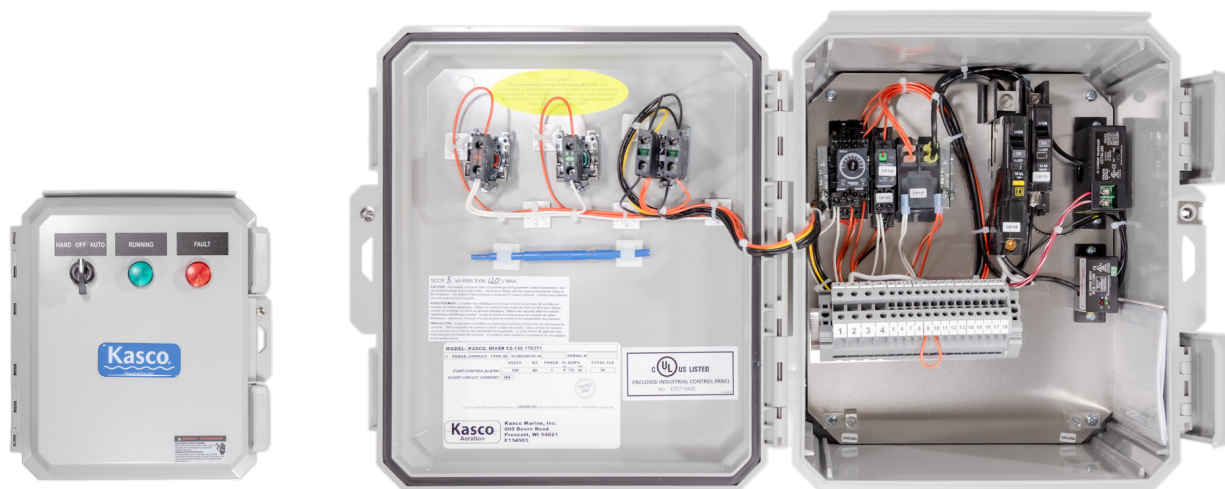


CertiSafe™ ADVANCED CONTROL PANEL



CS-150

For use with mixer models 2400C61, 3400C61 & 4400C61

The model CS-150 is a 120Vac, 60hz, single phase UL listed control panel engineered to operate Kasco C61 CertiSafe™ tank mixers. Designed for easy installation and operation, H-O-A control switch, indicator LEDs, Low water inhibit, and SCADA I/O for remote operation and monitoring.

REQUIRED

- 20amp feed breaker required and disconnect switch if required (supplied by others)
- Auxiliary interlock input: if utilized, the terminal jumper is replaced with a dry contact relay closure
- Remote SCADA start/stop input requires a dry contact relay closure

OPTIONAL

- 316 Stainless steel enclosure (non-stocked, built per order)

INCLUDED

- 20amp, single pole, 6ma trip circuit breaker
- Motor contactor: 1hp, 120Vac motor load rated
- Green LED running pilot light
- Red LED Fault pilot light
- H-O-A switch (Hand-Off-Auto)
 - Hand mode operates the mixer continuously (local control)
 - Auto mode operates the mixer from remote SCADA input
- Interface for remote SCADA mixer start/stop control signal (H-O-A Auto mode)
- Low water inhibit: Inhibit mixer operation if tank level drops below operating level
- Low water inhibit sensor adjustment tool
- 4-20ma motor current output (to SCADA) for monitoring motor status and fault condition
- Dry contacts (to SCADA) for: H-O-A in Hand, H-O-A in Auto, Mixer Running, & Mixer Fault
- Auxiliary interlock input for local low tank level inhibit
- UL508A listed control panel for US and Canada
- UL type rated 4X/3R nonmetallic enclosure with pad lockable latch, and integral mounting feet.
- Detailed wiring schematic with field terminal identification.

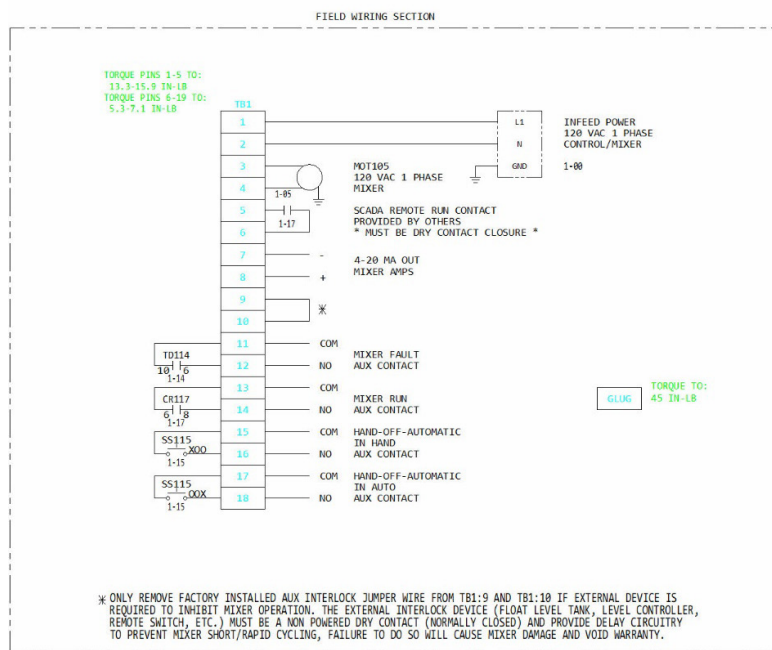
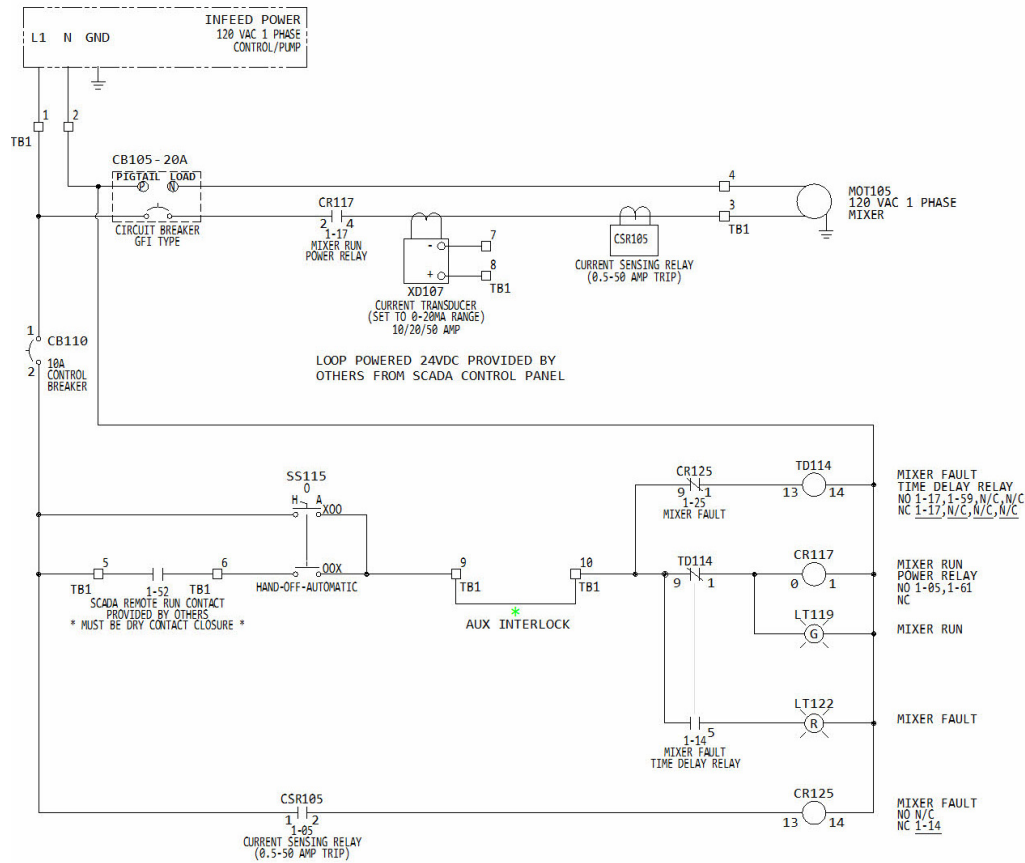


CS-150 / CS-250 CUT SHEET

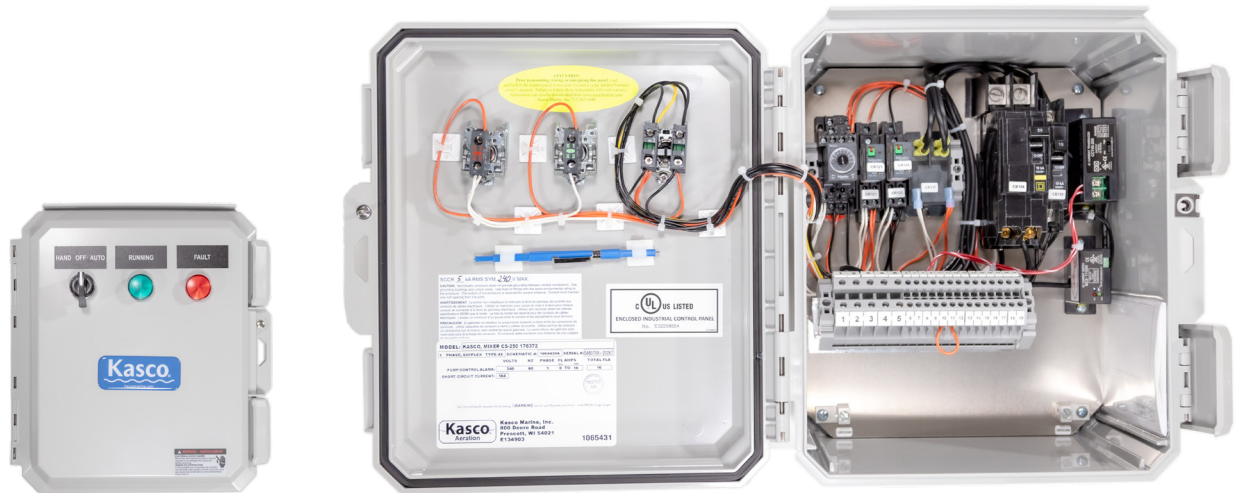
800 Deere Rd. Prescott, WI 54021 | 715.262.4488 | support@kascomarine.com | kascomarine.com

CertiSafe™ ADVANCED CONTROL PANEL

CS-150 Schematic



CertiSafe™ ADVANCED CONTROL PANEL



CS-250

For use with mixer models 3400HC61, 4400HC61, 8400C61 & 5.1C61

The model CS-250 is a 240Vac, 60hz, single phase UL listed control panel engineered to operate Kasco C61 Certisafe™ tank mixers. Designed for easy installation and operation, H-O-A control switch, indicator LEDs, low water inhibit, and SCADA I/O for remote operation and monitoring.

REQUIRED

- 40amp feed breaker required and disconnect switch if required (supplied by others)
- Auxiliary interlock input: if utilized, the terminal jumper is replaced with a dry contact relay closure
- Remote SCADA start/stop input requires a dry contact relay closure

OPTIONAL

- 316 Stainless steel enclosure (non-stocked, built per order)

INCLUDED

- 30amp, 2pole, 6ma trip circuit breaker
- Motor contactor: 5hp, 240Vac motor load
- Green LED running pilot light
- Red LED Fault pilot light
- H-O-A switch (Hand-Off-Auto)
 - Hand mode operates the mixer continuously (local control)
 - Auto mode operates the mixer from remote SCADA input
- Interface for remote SCADA mixer start/stop control signal (H-O-A Auto mode)
- Low water inhibit: Inhibit mixer operation if tank level drops below operating level
- Low water inhibit sensor adjustment tool
- 4-20ma motor current output (to SCADA) for monitoring motor status and fault condition
- Dry contacts (to SCADA) for: H-O-A in Hand, H-O-A in Auto, Mixer Running, & Mixer Fault
- Auxiliary interlock input for local low tank level inhibit
- UL508A listed control panel for US and Canada
- UL type rated 4X/3R nonmetallic enclosure with pad lockable latch, and integral mounting feet
- Detailed wiring schematic with field terminal identification

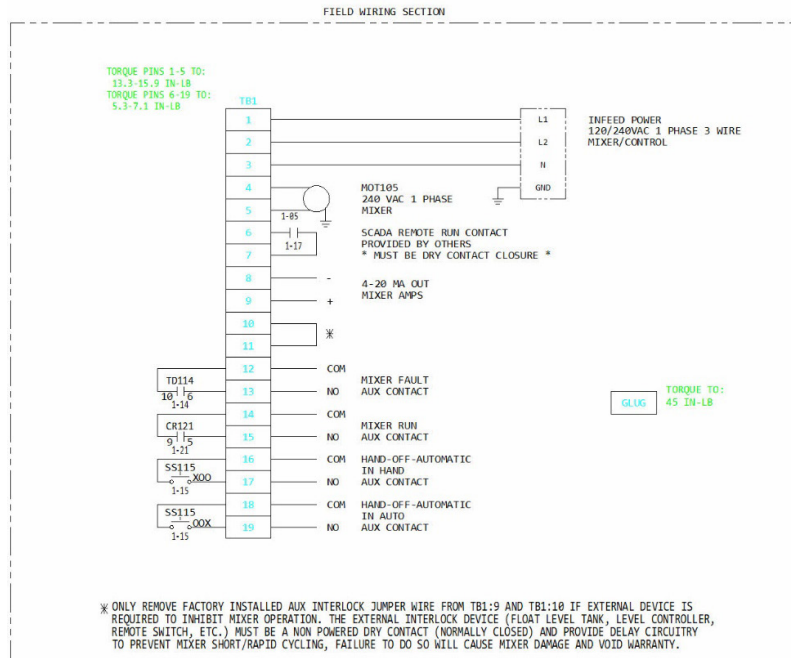
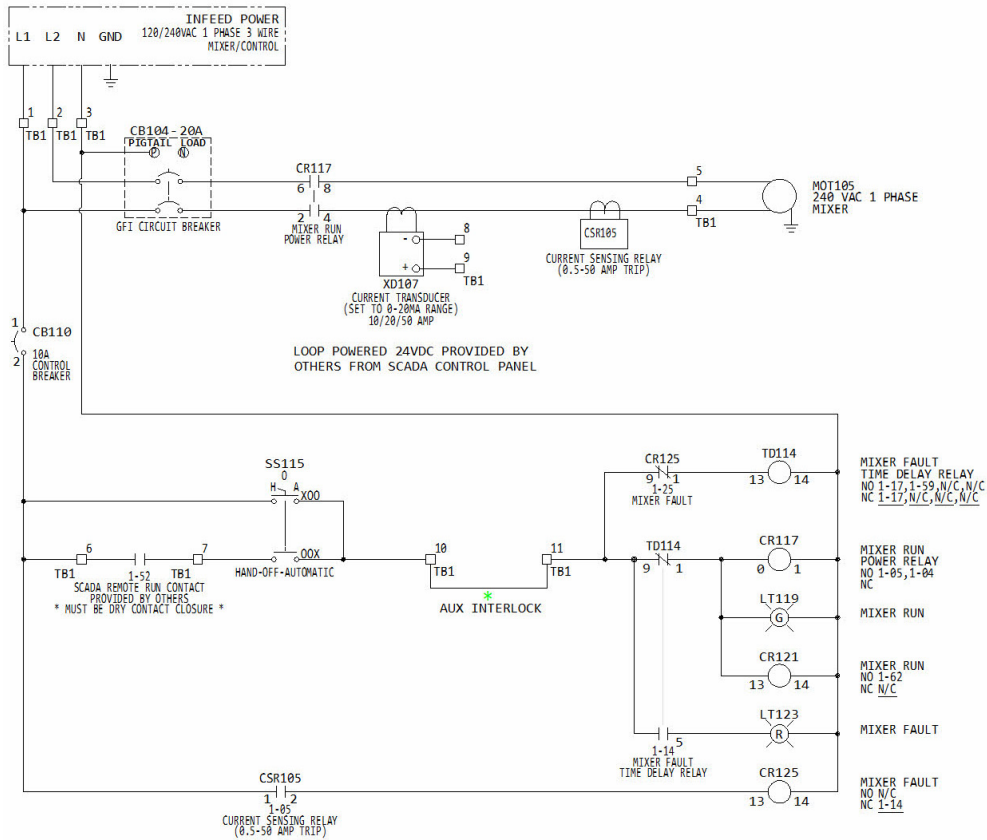


CS-150 / CS-250 CUT SHEET

800 Deere Rd. Prescott, WI 54021 | 715.262.4488 | support@kascomarine.com | kascomarine.com

CertiSafe™ ADVANCED CONTROL PANEL

CS-250 Schematic



CertiSafe™ ADVANCED CONTROL PANEL

CS-150 / CS-250 Enclosure Dimensions

