

DE-ICERS

#1 SELLING, BEST PERFORMING DE-ICER

- 120V and 208-240V, single phase options
- Install with included mooring ropes or optional Universal Mount Kit
- Manage from shore with optional human-rated, GFCI-protected control panel



1/2, 3/4, & 1HP
Available



Prevents Ice Buildup and Improves
Aquatic Environment



3-Year Warranty



ETL Listed to UL
& CSA Standards

| HP | VOLT (V) | MODEL | CORD LENGTH | | | | | | | | | |
|---------------------------------|----------|--------|-------------|---------|---------|---------|---------|---------|---------|---------|---------|---------|
| | | | 25 FT | 50 FT | 75 FT | 100 FT | 150 FT | 200 FT | 250 FT | 300 FT | 400 FT | 500+ FT |
| 120V, SINGLE PHASE PACKAGES | | | | | | | | | | | | |
| 1/2 | 120 | 2400D | \$968 | \$1,004 | - | \$1,192 | \$1,657 | \$1,829 | - | - | - | - |
| 3/4 | 120 | 3400D | \$1,057 | \$1,098 | - | \$1,280 | \$1,762 | \$1,924 | - | - | - | - |
| 1 | 120 | 4400D | \$1,165 | \$1,201 | \$1,317 | \$1,650 | \$2,277 | \$2,651 | - | - | - | - |
| 208-240V, SINGLE PHASE PACKAGES | | | | | | | | | | | | |
| 3/4 | 208-240 | 3400HD | - | \$1,097 | - | \$1,279 | \$1,823 | \$2,016 | Inquire | Inquire | Inquire | Inquire |
| 1 | 208-240 | 4400HD | - | \$1,247 | - | \$1,423 | \$1,904 | \$2,115 | Inquire | Inquire | Inquire | Inquire |

| HP | VOLT (V) | MODEL | 25 FT | 50 FT | 75 FT | 100 FT | 150 FT | 200 FT | 250 FT | 300 FT | 400 FT | 500+ FT |
|-----------------------------|----------|-------|-------|---------|-------|---------|---------|---------|--------|--------|--------|---------|
| 120V, SINGLE PHASE PACKAGES | | | | | | | | | | | | |
| 1/2 | 120 | 2400D | \$968 | \$1,004 | - | \$1,192 | \$1,657 | \$1,829 | - | - | - | - |



De-icers create areas of open water which could be dangerous to people or animals nearby. Consider posting a warning sign near the area.



NEVER enter the water with electrical equipment connected and / or in operation.

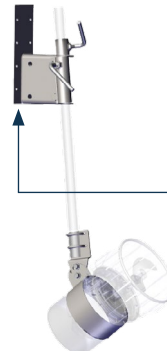
DE-ICER ACCESSORIES

MOUNTING OPTIONS

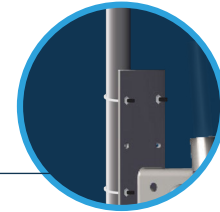
Secure your Kasco De-icer to a dock or similar structure using the included ropes or optional Universal Mount. Choose depth, angle, and flow of water to achieve desired results. Use an optional U-bolt Kit with the Universal Mount to attach the base plate to dock piling without drilling into structure.



Mooring Ropes
(Included)



Universal Mount
(Purchased Separately)



Optional U-bolt Kit
(PN 997108K) shown
attaching mount
base to dock piling.

| PART # | DESCRIPTION | MSRP |
|---------|--|-------|
| 243485 | Universal Mount (Customer supplies 1 in. / 25 DN nominal threaded or unthreaded pipe and (8) 5/16 in. lag screws to mount base plate to dock. If a U-bolt Kit is used, these lag screws are not needed. Hardware for mount assembly is included.) | \$340 |
| 997108K | U-bolt Kit for drill-free installation (Each kit includes 2 u-bolts and associated hardware.) | \$18 |

Product Notes:

1. Industrial Mounts are available for units in harsh environments.
2. Universal Mounts require (1) U-bolt Kit, Industrial Mounts require (2) U-bolt Kits.

CONTROL PANELS

Allow energy-saving automatic control of your Kasco De-icer. Select your desired temperature and/or time settings, and the control panel will do the rest.



C-10 Thermostat-Only
Control Panel



C-20 Timer & Thermostat
Control Panel



C-220 Timer-Only
Control Panel

| PART # | MODEL | DESCRIPTION | MSRP |
|--------|-------|--|---------|
| 110225 | C-10 | C-10 Thermostat-Only Control Panel (for 120V Units) | \$150 |
| 120350 | C-20 | C-20 Timer & Thermostat Control Panel (for 120V Units) | \$320 |
| 176332 | C-220 | C-220 Timer-Only Control Panel (for 208-240V Units) | \$1,290 |

Kasco De-icers create more open water for the most protection against ice buildup. This keeps your boat, dock, or other in-water property safe throughout the winter.