

# 3/4HP & 1HP

## J SERIES FOUNTAINS

- 120V and 208-240V, single phase options
- 1-piece float blends in with water's surface and is easy to install
- Composite bottom screen helps prevent clogging
- Premium Nozzles available separately (see pages 16-17)
- Manage from shore with human-rated, GFCI-protected control panel



5 Patterns Available\*



Shallow Operating Depths\*\*



Lighting Packages Available



2-Year Warranty



ETL Listed to UL & CSA Standards

### 3/4HP Packages

CORD LENGTH	50 FT	100 FT	150 FT	200 FT	250 FT	300 FT	400 FT	500+ FT
120V, SINGLE PHASE PACKAGES								
PART #	3400JF050	3400JF100	3400JF150	3400JF200	-	-	-	-
MSRP	\$1,996	\$2,178	<b>\$2,745</b>	<b>\$2,999</b>	-	-	-	-
208-240V, SINGLE PHASE PACKAGES								
PART #	3400HJF050	3400HJF100	3400HJF150	3400HJF200	3400HJF250	3400HJF300	3400HJF400	3400HJF500
MSRP	\$3,790	\$3,936	<b>\$4,630</b>	<b>\$4,851</b>	<b>\$4,949</b>	<b>\$5,064</b>	<b>\$5,595</b>	<b>Inquire</b>

### 1HP Packages

CORD LENGTH	50 FT	100 FT	150 FT	200 FT	250 FT	300 FT	400 FT	500+ FT
120V, SINGLE PHASE PACKAGES								
PART #	4400JF050	4400JF100	4400JF150	4400JF200	-	-	-	-
MSRP	\$2,429	<b>\$2,997</b>	<b>\$3,555</b>	<b>\$3,891</b>	-	-	-	-
208-240V, SINGLE PHASE PACKAGES								
PART #	4400HJF050	4400HJF100	4400HJF150	4400HJF200	4400HJF250	4400HJF300	4400HJF400	4400HJF500
MSRP	\$4,259	\$4,406	<b>\$5,148</b>	<b>\$5,383</b>	<b>\$5,620</b>	<b>\$5,736</b>	<b>\$5,859</b>	<b>Inquire</b>

\*Packages come with 4 twist-and-lock nozzles (Cypress, Linden, Sequoia, and Birch). The Willow pattern is achieved by operating the fountain without a nozzle.  
 \*\*3/4HP units operate in as little as 17.5 in. of water. 1HP units operate in as little as 19 in. of water.

Product Notes:

1. Prices in bold have quick disconnect installed on power cords.
2. 3/4 and 1HP, 120V single phase options include C-25 control panel.
3. 3/4 and 1HP, 208-240V single phase options include C-85 control panel.



NEVER enter the water with electrical equipment connected and / or in operation.

# 2HP & 3HP

## J SERIES FOUNTAINS

- 208-240V, single and three phase options
- 1-piece float blends in with water's surface and is easy to install
- Features stainless steel motor top, legs, top and bottom screens, and protective stub cord sleeving
- Premium Nozzles available separately (see pages 16-17)
- Manage from shore with human-rated, GFCI-protected control panel



5 Patterns Available\*



Shallow Operating Depths\*\*



Lighting Packages Available



3-Year Warranty - 2HP Units\*\*\*  
5-Year Warranty - 3HP Units



ETL Listed to UL & CSA Standards

### 2HP Packages

CORD LENGTH	50 FT	100 FT	150 FT	200 FT	250 FT	300 FT	400 FT	500+ FT
208-240V, SINGLE PHASE PACKAGES								
PART #	8400JF050	8400JF100	8400JF150	8400JF200	8400JF250	8400JF300	8400JF400	8400JF500
MSRP	\$5,721	<b>\$6,241</b>	<b>\$6,367</b>	<b>\$6,539</b>	<b>\$6,741</b>	<b>\$7,676</b>	<b>\$11,320</b>	<b>Inquire</b>
208-240V, THREE PHASE PACKAGES								
PART #	2.3JF050	2.3JF100	2.3JF150	2.3JF200	2.3JF250	2.3JF300	2.3JF400	2.3JF500
MSRP	<b>\$9,613</b>	<b>\$9,877</b>	<b>\$10,202</b>	<b>\$10,487</b>	<b>\$11,153</b>	<b>\$11,681</b>	<b>\$12,365</b>	<b>Inquire</b>

### 3HP Packages

CORD LENGTH	50 FT	100 FT	150 FT	200 FT	250 FT	300 FT	400 FT	500+ FT
208-240V, SINGLE PHASE PACKAGES								
PART #	3.1JF050	3.1JF100	3.1JF150	3.1JF200	3.1JF250	3.1JF300	3.1JF400	3.1JF500
MSRP	\$6,747	<b>\$7,214</b>	<b>\$7,385</b>	<b>\$8,075</b>	<b>\$8,644</b>	<b>\$8,992</b>	<b>\$11,620</b>	<b>Inquire</b>
208-240V, THREE PHASE PACKAGES								
PART #	3.3JF050	3.3JF100	3.3JF150	3.3JF200	3.3JF250	3.3JF300	3.3JF400	3.3JF500
MSRP	<b>\$9,983</b>	<b>\$10,245</b>	<b>\$10,572</b>	<b>\$11,159</b>	<b>\$11,522</b>	<b>\$12,861</b>	<b>\$13,827</b>	<b>Inquire</b>

\*Packages include 5 twist-and-lock nozzles (Balsam, Linden, Birch, Spruce, and Redwood).  
 \*\*2HP units operate in as little as 20 in. of water. 3HP units operate in as little as 24 in. of water.  
 \*\*\*Extended warranty available on 2HP units.

Product Notes:

1. Prices in bold have quick disconnect installed on power cords.
2. 2HP, single phase options include C-85 control panel. 3HP, single phase options include C-95 control panel.
3. 2 and 3HP, three phase units include CF-3235 control panel.
4. 460-480V, three phase options available for special order in approved locations only. Contact Kasco for details.

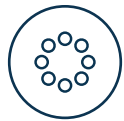


NEVER enter the water with electrical equipment connected and / or in operation.

# 5HP & 7.5HP

## J SERIES FOUNTAINS

- 208-240V, 5HP available as single and three phase options
- 208-240V, 7.5HP available as three phase only
- 1-piece float blends in with water’s surface and is easy to install
- Features stainless steel motor top, legs, top and bottom screens, and protective stub cord sleeving
- Premium Nozzles available separately (see pages 16-17)
- Manage from shore with human-rated, GFCI-protected control panel



5 Patterns Available\*



Shallow Operating Depths\*\*



Lighting Packages Available



5-Year Warranty



ETL Listed to UL & CSA Standards

### 5HP Packages

CORD LENGTH	100 FT	150 FT	200 FT	250 FT	300 FT	400 FT	500+ FT
208-240V, SINGLE PHASE PACKAGES							
PART #	5.1JF100	5.1JF150	5.1JF200	5.1JF250	5.1JF300	5.1JF400	5.1JF500
MSRP	<b>\$8,441</b>	<b>\$9,429</b>	<b>\$10,164</b>	<b>\$11,540</b>	<b>\$13,783</b>	<b>\$14,911</b>	<b>Inquire</b>
208-240V, THREE PHASE PACKAGES							
PART #	5.3JF100	5.3JF150	5.3JF200	5.3JF250	5.3JF300	5.3JF400	5.3JF500
MSRP	<b>\$10,668</b>	<b>\$11,338</b>	<b>\$12,120</b>	<b>\$12,546</b>	<b>\$15,541</b>	<b>\$16,695</b>	<b>Inquire</b>

### 7.5HP Packages

CORD LENGTH	100 FT	150 FT	200 FT	250 FT	300 FT	400 FT	500+ FT
208-240V, THREE PHASE PACKAGES							
PART #	7.3JF100	7.3JF150	7.3JF200	7.3JF250	7.3JF300	7.3JF400	7.3JF500
MSRP	<b>\$10,941</b>	<b>\$11,850</b>	<b>\$12,430</b>	<b>\$14,328</b>	<b>\$15,404</b>	<b>\$18,081</b>	<b>Inquire</b>

\*Packages include 5 twist-n-lock nozzles (Balsam, Linden, Birch, Spruce, Redwood).

\*\*5HP units operate in as little as 26 in. of water. 7.5HP units operate in as little as 28 in. of water.

Product Notes:

1. Prices in bold have quick disconnect installed on power cords.
2. 5HP, single phase units include C-95 control panel. 5HP, three phase units include CF-3235 control panel.
3. 7.5HP, three phase units include CF-3075 control panel.
4. 460-480V, three phase options available for special order in approved locations only. Contact Kasco for details.



NEVER enter the water with electrical equipment connected and / or in operation.

# PREMIUM NOZZLES

## FOR J SERIES FOUNTAINS

Further define your J Series experience with a Premium Nozzle, available for all HP sizes. Purchased separately, Kasco Premium Nozzles generate crisp and distinct streams of water, delivering dramatic and captivating displays.



Fern



Available for All J Series Fountains



4 Pattern Choices for 3/4 & 1HP Units



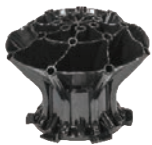
6 Pattern Choices for 2, 3, 5, & 7.5HP Units



Twist-and-lock Installation



Purchased Separately



Mighty Oak



Magnolia



Mahogany



Madrone



Palm

PATTERN	3/4 & 1HP PART NUMBERS & DIMENSIONS (H x W) (FT)				2, 3, 5 & 7.5HP PART NUMBERS & DIMENSIONS (H x W) (FT)					
	PART #	3/4HP	1HP	MSRP	PART #	2HP	3HP	5HP	7.5HP	MSRP
Mighty Oak	431335K	10 x 24	13 x 34	\$60	841335K	14.5 x 40	19.5 x 51	24.5 x 58	27 x 60	\$295
Magnolia	431325K	9 x 29	11.5 x 37	\$60	841325K	13.5 x 44	18 x 60	23.5 x 72	26 x 80	\$295
Mahogany	431345K	11.5 x 28	14 x 34	\$60	841345K	16 x 40	21 x 58	28 x 64	29 x 72	\$295
Madrone	431330K	11.5 x 28	14 x 35	\$60	841330K	15 x 43	20 x 59	24 x 70	26 x 75	\$295
Palm	-	-	-	-	841320K	12 x 26	16 x 36	20.5 x 40	22 x 42	\$295
<b>Fern</b>	-	-	-	-	841315K	12 x 36	16 x 54	20 x 70	24 x 66	\$295

# 1/2HP, 3/4HP, & 1HP

## VFX SERIES FOUNTAINS

- 120V and 208-240V, single phase options
- 1-piece float blends in with water's surface and is easy to install
- Bottom screen helps prevent clogging
- Manage from shore with human-rated, GFCI-protected control panel



Classic V-shaped Pattern



Shallow Operating Depths\*



Lighting Packages Available



2-Year Warranty



ETL Listed to UL & CSA Standards

HP	DISPLAY		CORD LENGTH	50 FT	100 FT	150 FT	200 FT	250 FT	300 FT	400 FT	500+ FT
	H (FT)	W (FT)									
120V, SINGLE PHASE PACKAGES											
1/2	5	15	PART #	2400VFX050	2400VFX100	2400VFX150	2400VFX200	-	-	-	-
			MSRP	\$1,662	\$1,835	<b>\$2,387</b>	<b>\$2,634</b>	-	-	-	-
3/4	5.5	21	PART #	3400VFX050	3400VFX100	3400VFX150	3400VFX200	-	-	-	-
			MSRP	\$1,795	\$1,973	<b>\$2,547</b>	<b>\$2,806</b>	-	-	-	-
1	8	26	PART #	4400VFX050	4400VFX100	4400VFX150	4400VFX200	-	-	-	-
			MSRP	\$2,113	<b>\$2,702</b>	<b>\$3,250</b>	<b>\$3,676</b>	-	-	-	-
208-240V, SINGLE PHASE PACKAGES											
3/4	5.5	21	PART #	3400HVFX050	3400HVFX100	3400HVFX150	3400HVFX200	3400HVFX250	3400HVFX300	3400HVFX400	3400HVFX500
			MSRP	\$3,493	\$3,640	<b>\$4,324</b>	<b>\$4,545</b>	<b>\$4,649</b>	<b>\$4,761</b>	<b>\$5,279</b>	<b>Inquire</b>
1	8	26	PART #	4400HVFX050	4400HVFX100	4400HVFX150	4400HVFX200	4400HVFX250	4400HVFX300	4400HVFX400	4400HVFX500
			MSRP	\$3,763	\$3,897	<b>\$4,599</b>	<b>\$4,825</b>	<b>\$5,056</b>	<b>\$5,173</b>	<b>\$5,670</b>	<b>Inquire</b>

\*1/2HP units operate in 17.5 in. of water. 3/4HP units operate in 17.5 in. of water. 1HP units operate in 19 in. of water.

Product Notes:

1. Prices in bold have quick disconnect installed on power cords.
2. 1/2, 3/4, and 1HP units, 120V, single phase units include C-25 control panel.
3. 3/4 and 1HP units, 208-240V, single phase units include C-85 control panel.



NEVER enter the water with electrical equipment connected and / or in operation.

# 2HP & 5HP

## VFX SERIES FOUNTAINS

- 208-240V, single and three phase options
- 1-piece float blends in with water's surface and is easy to install
- Top and bottom screens help prevent clogging
- Manage from shore with human-rated, GFCI-protected control panel



Classic V-shaped Pattern



Shallow Operating Depths\*



Lighting Packages Available



3-Year Warranty\*\*



ETL Listed to UL & CSA Standards

HP	DISPLAY		CORD LENGTH	50 FT	100 FT	150 FT	200 FT	250 FT	300 FT	400 FT	500+ FT
	H (FT)	W (FT)									
<b>208-240V, SINGLE PHASE PACKAGES</b>											
2	8	32	PART #	8400VFX050	8400VFX100	8400VFX150	8400VFX200	8400VFX250	8400VFX300	8400VFX400	8400VFX500
			MSRP	\$6,030	<b>\$6,560</b>	<b>\$6,731</b>	<b>\$6,911</b>	<b>\$7,127</b>	<b>\$8,054</b>	<b>\$11,573</b>	<b>Inquire</b>
5	9	34	PART #	-	5.1VFX100	5.1VFX150	5.1VFX200	5.1VFX250	5.1VFX300	5.1VFX400	5.1VFX500
			MSRP	-	<b>\$8,510</b>	<b>\$9,383</b>	<b>\$10,056</b>	<b>\$11,249</b>	<b>\$13,251</b>	<b>\$15,198</b>	<b>Inquire</b>
<b>208-240V, THREE PHASE PACKAGES</b>											
2	8	32	PART #	2.3VFX050	2.3VFX100	2.3VFX150	2.3VFX200	2.3VFX250	2.3VFX300	2.3VFX400	2.3VFX500
			MSRP	<b>\$9,377</b>	<b>\$9,580</b>	<b>\$9,964</b>	<b>\$10,164</b>	<b>\$10,808</b>	<b>\$11,339</b>	<b>\$12,301</b>	<b>Inquire</b>
5	9	34	PART #	-	5.3VFX100	5.3VFX150	5.3VFX200	5.3VFX250	5.3VFX300	5.3VFX400	5.3VFX500
			MSRP	-	<b>\$10,474</b>	<b>\$11,140</b>	<b>\$12,269</b>	<b>\$12,803</b>	<b>\$15,751</b>	<b>\$16,995</b>	<b>Inquire</b>

\*2HP units operate in 20 in. of water. 5HP units operate in 26 in. of water.

\*\* Extended warranty available on 2HP and 5HP units.

Product Notes:

1. Prices in bold have quick disconnect installed on power cords.
2. 2HP, single phase units include C-85 control panel. 5HP, single phase units include C-95 control panel.
3. 2 and 5HP, three phase units include CF-3235 control panel.
4. Three phase units are constructed with a durable stainless steel motor top for reliable performance in all environments.
5. Mesh screen (included) around bottom screen further helps prevent clogging.
6. 460-480V, three phase option available for special order in approved locations only. Contact Kasco for details.



NEVER enter the water with electrical equipment connected and / or in operation.

# COMPOSITE LED

## WATERGLOW LIGHTING

Kasco LED Lighting systems provide classic elegance and include 4 colored lenses to create the perfect illuminated display.

- Includes light fixtures, brackets, snap-on clips, power cord, waterproof disconnect caps, colored lenses, and lens caps
- 3- and 6-fixture kits available in multiple power cord lengths
- Runs on 120Vac power



Displays White and Includes Red, Green, Blue, and Amber Lenses



Durable Composite Fixtures for Watertight Operation



11 Watts and 910 Lumens Per Fixture

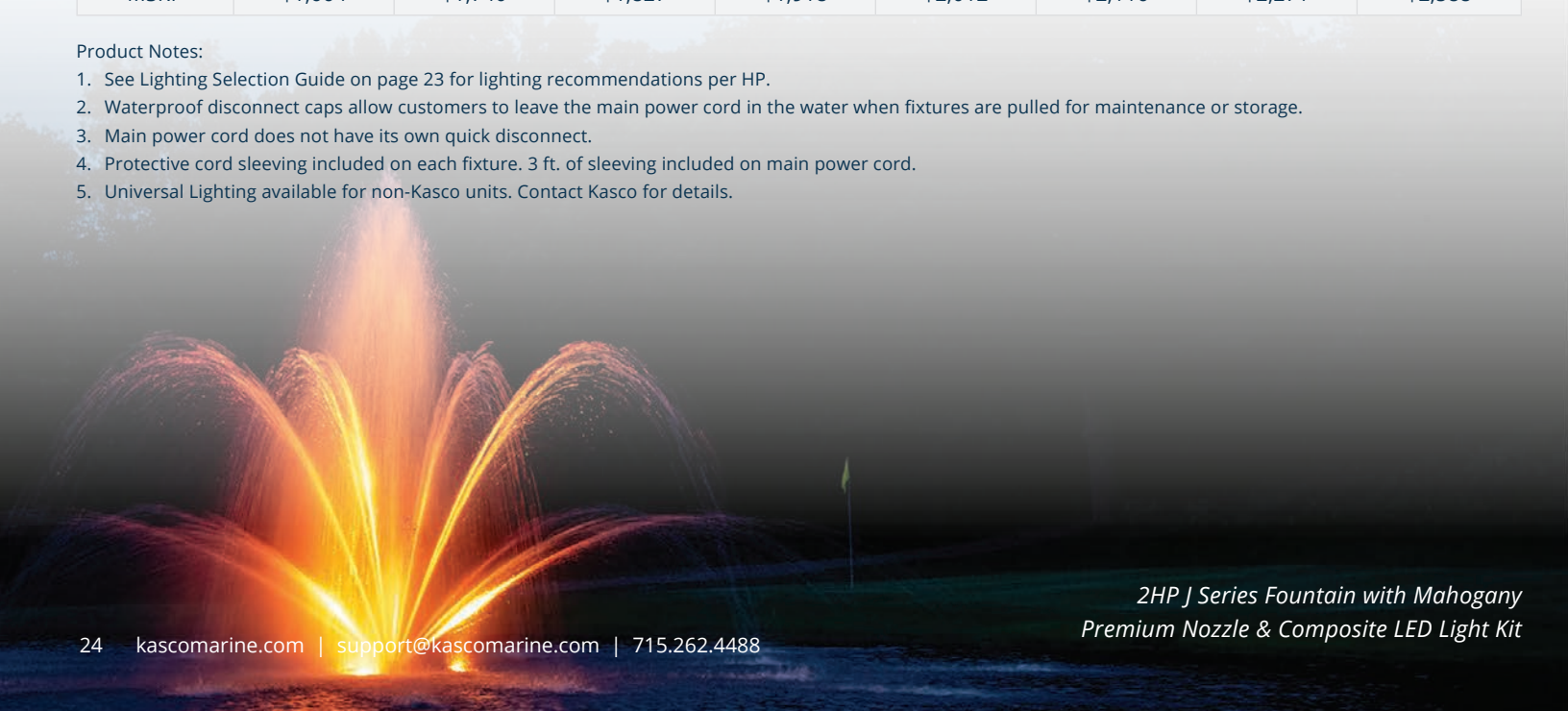


2-Year Warranty

CORD LENGTH	50 FT	100 FT	150 FT	200 FT	250 FT	300 FT	400 FT	500 FT
3-FIXTURE KITS								
PART #	LED3C11-050	LED3C11-100	LED3C11-150	LED3C11-200	LED3C11-250	LED3C11-300	LED3C11-400	LED3C11-500
MSRP	\$878	\$968	\$1,050	\$1,143	\$1,264	\$1,345	\$1,478	\$2,029
6-FIXTURE KITS								
PART #	LED6C11-050	LED6C11-100	LED6C11-150	LED6C11-200	LED6C11-250	LED6C11-300	LED6C11-400	LED6C11-500
MSRP	\$1,664	\$1,740	\$1,827	\$1,918	\$2,012	\$2,116	\$2,271	\$2,588

**Product Notes:**

1. See Lighting Selection Guide on page 23 for lighting recommendations per HP.
2. Waterproof disconnect caps allow customers to leave the main power cord in the water when fixtures are pulled for maintenance or storage.
3. Main power cord does not have its own quick disconnect.
4. Protective cord sleeving included on each fixture. 3 ft. of sleeving included on main power cord.
5. Universal Lighting available for non-Kasco units. Contact Kasco for details.



*2HP J Series Fountain with Mahogany Premium Nozzle & Composite LED Light Kit*

# RGB LED

## WATERGLOW LIGHTING

Kasco RGB Lighting systems amplify evening water displays with exceptional colors and rhythmic musical capabilities.

- Packages include light fixtures, brackets, snap-on clips, power cord, waterproof disconnect caps, remote control, and RGB control panel
- 3- and 6-fixture kits available in multiple power cord lengths
- Runs on 24Vdc power



9 Vibrant Color Choices



Durable Composite Housings for Watertight Operation



Power Cord Lengths up to 400 ft.



5 Watts Per Fixture



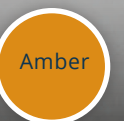
2-Year Warranty

CORD LENGTH	50 FT	100 FT	150 FT	200 FT	250 FT	300 FT	400 FT
3-FIXTURE KITS							
PART #	RGB3C5-050	RGB3C5-100	RGB3C5-150	RGB3C5-200	RGB3C5-250	RGB3C5-300	RGB3C5-400
MSRP	\$1,421	\$1,623	\$1,825	\$2,023	\$2,239	\$2,889	\$3,748
6-FIXTURE KITS							
PART #	RGB6C5-050	RGB6C5-100	RGB6C5-150	RGB6C5-200	RGB6C5-250	RGB6C5-300	RGB6C5-400
MSRP	\$2,438	\$2,861	\$3,285	\$3,710	\$4,149	\$5,553	\$6,953

\*When adding a composite light kit to a 2 or 3HP surface aerator, be sure to also order a 3-light kit adapter or 6-light kit adapter. See page 63.

Product Notes:

1. See Lighting Selection Guide on page 23 for lighting recommendations per HP.
2. Waterproof disconnect caps allow customers to leave the main power cord in the water when fixtures are pulled for maintenance or storage.
3. Main power cord does not have its own quick disconnect.
4. Protective cord sleeving included on each fixture. 3 ft. of sleeving included on main power cord(s).
5. 6-fixture kits ship with 2 power cords, each with 3 fixtures.
6. Universal Lighting available for non-Kasco units. Contact Kasco for details.



1HP Surface Aerator with RGB LED Light Kit



# RGBW40

## DELUXE DMX LIGHTING SYSTEM

Kasco RGBW40 Lighting systems operate over Wi-Fi connection or with a push-button controller, offer 36 pre-programmed settings, and are DMX-controllable for further customization. Independently adjustable fixtures allow for vibrant lighting in any setting.



- Includes fixtures, brackets, power cord with quick disconnect, and control panel
- 2-, 3-, and 4-fixture kits available in multiple power cord lengths
- Runs on 120Vac power



8 Light Beams in Each Fixture



Durable Stainless Steel Fixtures for Watertight Operation



40 Watts and 2,376 Lumens Per Fixture



5-Year Warranty



UL / CSA Listed

### WI-FI ENABLED PACKAGES

Use the touch pad inside the panel or download the app\* on your mobile device to control color, sequencing patterns, and power.

### PUSH-BUTTON PACKAGES

Use the push-button controller inside the panel or included short-range remote to cycle through color, sequencing patterns, and power.

CONTROL OPTION	MODEL	CORD LENGTH						
		100 FT	150 FT	200 FT	250 FT	300 FT	400 FT	500 FT
2-FIXTURE KITS								
Wi-Fi	RGBW2SW40	\$5,890	\$6,096	\$6,273	\$6,469	\$6,676	\$7,058	\$7,451
Push-Button	RGBW2SL40							
3-FIXTURE KITS								
Wi-Fi	RGBW3SW40	\$7,150	\$7,357	\$7,534	\$7,730	\$7,926	\$8,319	\$8,712
Push-Button	RGBW3SL40							
4-FIXTURE KITS								
Wi-Fi	RGBW4SW40	\$8,503	\$8,709	\$8,886	\$9,083	\$9,279	\$10,523	\$11,130
Push-Button	RGBW4SL40							

\*See manual for information on the app needed for the Wi-Fi enabled packages.

Product Notes:

1. See Lighting Selection Guide on page 23 for lighting recommendations per HP.
2. Part # is the model combined with cord length (ex. RGBW2SW40-100).
3. Fixtures are daisy-chained together for easy installation.
4. Quick disconnect is included on main power cord.
5. Protective cord sleeving included on each fixture. 3 ft. of sleeving included on main power cord.
6. Wi-Fi models feature long-range operation.

# STAINLESS STEEL LED

## WATERGLOW LIGHTING

Kasco Stainless Steel Lighting systems ensure a radiant display long into the evening hours and offer 4 colored lenses.

- Includes light fixtures, brackets, snap-on clips, power cord with quick disconnect, colored lenses, and lens caps
- 3- and 6-fixture kits available in multiple power cord lengths
- Runs on 120Vac power



Displays White and Includes Red, Green, Blue, and Amber Lenses



Durable Stainless Steel Fixtures for Watertight Operation



19 Watts and 1,700 Lumens Per Fixture



3-Year Warranty



UL / CSA Listed

CORD LENGTH	50 FT	100 FT	150 FT	200 FT	250 FT	300 FT	400 FT	500 FT
3-FIXTURE KITS								
PART #	LED3S19-050	LED3S19-100	LED3S19-150	LED3S19-200	LED3S19-250	LED3S19-300	LED3S19-400	LED3S19-500
MSRP	\$2,025	\$2,105	\$2,193	\$2,280	\$2,360	\$2,466	\$2,658	\$2,945
6-FIXTURE KITS								
PART #	LED6S19-050	LED6S19-100	LED6S19-150	LED6S19-200	LED6S19-250	LED6S19-300	LED6S19-400	LED6S19-500
MSRP	\$3,671	\$3,765	\$3,862	\$3,959	\$4,067	\$4,178	\$4,354	\$4,441

**Product Notes:**

1. See Lighting Selection Guide on page 23 for lighting recommendations per HP.
2. Fixtures are daisy-chained together for easy installation.
3. Quick disconnect is included on main power cord.
4. Protective cord sleeving included on each fixture. 3 ft. of sleeving included on main power cord.
5. Universal Lighting available for non-Kasco units. Contact Kasco for details.



*2HP J-Series Fountain with Balsam Nozzle & Stainless Steel LED Light Kit*