

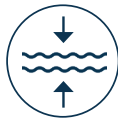
# 3/4HP & 1HP

## J SERIES FOUNTAINS

- 120V and 208-240V, single phase options
- 1-piece float blends with water's surface and is easy to install
- Bottom screen helps prevent clogging
- Premium Nozzles available separately. See pages 16-17.
- Manage from shore with human-rated, GFCI-protected control panel



5 Patterns Available\*



Shallow Operating Depths\*\*



Lighting Packages Available



2-Year Warranty



ETL Listed to UL & CSA Standards

### 3/4HP Packages

CORD LENGTH	50 FT	100 FT	150 FT	200 FT	250 FT	300 FT	400 FT	500 FT
120V, SINGLE PHASE								
PART #	3400JF050	3400JF100	3400JF150	3400JF200	-	-	-	-
MSRP	\$1,996	\$2,178	<b>\$2,745</b>	<b>\$2,999</b>	-	-	-	-
208-240V, SINGLE PHASE								
PART #	3400HJF050	3400HJF100	3400HJF150	3400HJF200	3400HJF250	3400HJF300	3400HJF400	3400HJF500
MSRP	\$3,575	\$3,713	<b>\$4,368</b>	<b>\$4,576</b>	<b>\$4,669</b>	<b>\$4,777</b>	<b>\$5,278</b>	<b>Inquire</b>

### 1HP Packages

CORD LENGTH	50 FT	100 FT	150 FT	200 FT	250 FT	300 FT	400 FT	500 FT
120V, SINGLE PHASE								
PART #	4400JF050	4400JF100	4400JF150	4400JF200	-	-	-	-
MSRP	\$2,418	<b>\$2,997</b>	<b>\$3,555</b>	<b>\$4,011</b>	-	-	-	-
208-240V, SINGLE PHASE								
PART #	4400HJF050	4400HJF100	4400HJF150	4400HJF200	4400HJF250	4400HJF300	4400HJF400	4400HJF500
MSRP	\$4,135	\$4,278	<b>\$4,998</b>	<b>\$5,226</b>	<b>\$5,456</b>	<b>\$5,569</b>	<b>\$5,688</b>	<b>Inquire</b>

\*Packages come with 4 twist-n-lock nozzles. To achieve the Willow pattern, operate fountain without nozzle.

\*\*3/4HP units operate in as little as 17.5 in. of water. 1HP units operate in as little as 19 in. of water.

Product Notes:

1. Prices in bold have quick disconnect installed on power cords.
2. 3/4 and 1HP, 120V options include C-25 control panel.
3. 3/4 and 1HP, 208-240V options include C-85 control panel.
4. Solar-powered option available. Contact Kasco for details.



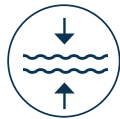
# 2HP & 3HP

## J SERIES FOUNTAINS

- 208-240V, single and three phase options
- 1-piece float blends with water's surface and is easy to install
- Stainless steel hex bottom screen helps prevent clogging
- Premium Nozzles available separately. See pages 16-17.
- Manage from shore with human-rated, GFCI-protected control panel



5 Patterns Available\*



Shallow Operating Depths\*\*



Lighting Packages Available



3-Year Warranty - 2HP Units\*\*\*  
5-Year Warranty - 3HP Units



ETL Listed to UL & CSA Standards

### 2HP Packages

CORD LENGTH	50 FT	100 FT	150 FT	200 FT	250 FT	300 FT	400 FT	500 FT
208-240V, SINGLE PHASE								
PART #	8400JF050	8400JF100	8400JF150	8400JF200	8400JF250	8400JF300	8400JF400	8400JF500
MSRP	\$5,721	<b>\$6,241</b>	<b>\$6,367</b>	<b>\$6,539</b>	<b>\$6,741</b>	<b>\$7,676</b>	<b>\$11,320</b>	<b>Inquire</b>
208-240V, THREE PHASE								
PART #	2.3JF050	2.3JF100	2.3JF150	2.3JF200	2.3JF250	2.3JF300	2.3JF400	2.3JF500
MSRP	<b>\$9,243</b>	<b>\$9,497</b>	<b>\$9,810</b>	<b>\$10,084</b>	<b>\$10,724</b>	<b>\$11,232</b>	<b>\$11,889</b>	<b>Inquire</b>

### 3HP Packages

CORD LENGTH	50 FT	100 FT	150 FT	200 FT	250 FT	300 FT	400 FT	500 FT
208-240V, SINGLE PHASE								
PART #	3.1JF050	3.1JF100	3.1JF150	3.1JF200	3.1JF250	3.1JF300	3.1JF400	3.1JF500
MSRP	\$6,747	<b>\$7,214</b>	<b>\$7,385</b>	<b>\$8,075</b>	<b>\$8,644</b>	<b>\$8,992</b>	<b>\$11,620</b>	<b>Inquire</b>
208-240V, THREE PHASE								
PART #	3.3JF050	3.3JF100	3.3JF150	3.3JF200	3.3JF250	3.3JF300	3.3JF400	3.3JF500
MSRP	<b>\$9,599</b>	<b>\$9,851</b>	<b>\$10,165</b>	<b>\$10,730</b>	<b>\$11,079</b>	<b>\$12,366</b>	<b>\$13,295</b>	<b>Inquire</b>

\*Packages include 5 twist-n-lock nozzles.

\*\*2HP units operate in as little as 20 in. of water. 3HP units operate in as little as 24 in. of water.

\*\*\*Extended warranty available on 2HP units.

Product Notes:

1. Prices in bold have quick disconnect installed on power cords.
2. 2HP, single phase options include C-85 control panel. 3HP, single phase options include C-95 control panel.
3. 2 and 3HP, three phase options include CF-3235 control panel.
4. 2 and 3HP, three phase units are constructed with durable stainless steel motor top and legs for reliable performance in all environments.
5. 460-480V, three phase options available for special order in approved locations only. Contact Kasco for details.
6. Solar-powered option available for 2HP, three phase units. Contact Kasco for details.



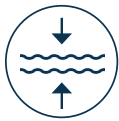
# 5HP & 7.5HP

## J SERIES FOUNTAINS

- 208-240V, 5HP available as single and three phase
- 208-240V, 7.5HP available only as three phase
- 1-piece float blends with water's surface and is easy to install
- Stainless steel hex bottom screen helps prevent clogging
- Premium Nozzles available separately. See pages 16-17.
- Manage from shore with human-rated, GFCI-protected control panel



5 Patterns Available\*



Shallow Operating Depths\*\*



Lighting Packages Available



5-Year Warranty



ETL Listed to UL & CSA Standards

### 5HP Packages

CORD LENGTH	100 FT	150 FT	200 FT	250 FT	300 FT	400 FT	500 FT
208-240V, SINGLE PHASE							
PART #	5.1JF100	5.1JF150	5.1JF200	5.1JF250	5.1JF300	5.1JF400	5.1JF500
MSRP	<b>\$8,441</b>	<b>\$9,429</b>	<b>\$10,164</b>	<b>\$11,540</b>	<b>\$13,783</b>	<b>\$14,911</b>	<b>Inquire</b>
208-240V, THREE PHASE							
PART #	5.3JF100	5.3JF150	5.3JF200	5.3JF250	5.3JF300	5.3JF400	5.3JF500
MSRP	<b>\$10,668</b>	<b>\$11,338</b>	<b>\$12,120</b>	<b>\$12,546</b>	<b>\$15,541</b>	<b>\$16,695</b>	<b>Inquire</b>

### 7.5HP Packages

CORD LENGTH	100 FT	150 FT	200 FT	250 FT	300 FT	400 FT	500 FT
208-240V, THREE PHASE							
PART #	7.3JF100	7.3JF150	7.3JF200	7.3JF250	7.3JF300	7.3JF400	7.3JF500
MSRP	<b>\$10,941</b>	<b>\$11,850</b>	<b>\$12,430</b>	<b>\$14,328</b>	<b>\$15,404</b>	<b>\$18,081</b>	<b>Inquire</b>

\*Packages include 5 twist-n-lock nozzles.

\*\*5HP units operate in as little as 26 in. of water. 7.5HP units operate in as little as 28 in. of water.

Product Notes:

1. Prices in bold have quick disconnect installed on power cords.
2. 5HP, single phase units include C-95 control panel. 5HP, three phase units include CF-3235 control panel.
3. 7.5HP, three phase units include CF-3075 control panel.
4. 5 and 7.5HP units are constructed with durable stainless steel motor top and legs for reliable performance in all environments.
5. 460-480V, three phase options available for special order in approved locations only. Contact Kasco for details.



# PREMIUM NOZZLES

## FOR J SERIES FOUNTAINS

Further define your J Series experience with a Premium Nozzle, available for all HP sizes. New this year is the Fern Nozzle which provides an expansive, two-dimensional display for narrow ponds. Purchased separately, Kasco Premium Nozzles provide crisp and distinct streams of water for dramatic and captivating displays.



NEW Fern Nozzle



Available for All J Series Fountains



4 Pattern Choices for 3/4 & 1HP Units



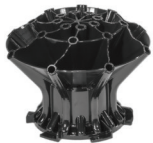
6 Pattern Choices for 2, 3, 5 & 7.5HP Units



Twist-and-lock Installation with Included Tool



Purchased Separately



Mighty Oak



Magnolia



Mahogany



Madrone



Palm



Fern - NEW!

PATTERN	3/4 & 1HP PART NUMBERS & DIMENSIONS (H x W) (FT)				2, 3, 5 & 7.5HP PART NUMBERS & DIMENSIONS (H x W) (FT)					
	PART #	3/4HP	1HP	MSRP	PART #	2HP	3HP	5HP	7.5HP	MSRP
<b>Mighty Oak</b>	431335K	10 x 24	13 X 34	\$150	841335K	14.5 x 40	19.5 x 51	24.5 x 58	26 x 60	\$295
<b>Magnolia</b>	431325K	9 x 29	11.5 x 37	\$150	841325K	13.5 x 44	18 x 60	23.5 x 72	26 x 80	\$295
<b>Mahogany</b>	431345K	11.5 x 28	14 x 34	\$150	841345K	16 x 40	21 x 58	28 x 64	29 x 72	\$295
<b>Madrone</b>	431330K	11.5 x 28	14 x 35	\$150	841330K	15 x 43	20 x 59	24 x 70	26 x 75	\$295
<b>Palm</b>	-	-	-	-	841320K	12 x 26	16 x 36	20.5 x 40	22 x 42	\$295
<b>Fern - NEW!</b>	-	-	-	-	841315K	12 x 36	16 x 54	20 x 70	24 x 66	\$295

Product Notes:

1. Fern nozzle does not require tool for installation. Simply twist and lock into place.