

# 3/4HP & 1HP

## J SERIES FOUNTAINS

- 120V and 208-240V, single phase options
- 1-piece float blends in with water's surface and is easy to install
- Composite bottom screen helps prevent clogging
- Premium Nozzles available separately (see pages 16-17)
- Manage from shore with human-rated, GFCI-protected control panel



5 Patterns Available\*



Shallow Operating Depths\*\*



Lighting Packages Available



2-Year Warranty



ETL Listed to UL & CSA Standards

### 3/4HP Packages

| CORD LENGTH                     | 50 FT      | 100 FT     | 150 FT         | 200 FT         | 250 FT         | 300 FT         | 400 FT         | 500+ FT        |
|---------------------------------|------------|------------|----------------|----------------|----------------|----------------|----------------|----------------|
| 120V, SINGLE PHASE PACKAGES     |            |            |                |                |                |                |                |                |
| PART #                          | 3400JF050  | 3400JF100  | 3400JF150      | 3400JF200      | -              | -              | -              | -              |
| MSRP                            | \$1,996    | \$2,178    | <b>\$2,745</b> | <b>\$2,999</b> | -              | -              | -              | -              |
| 208-240V, SINGLE PHASE PACKAGES |            |            |                |                |                |                |                |                |
| PART #                          | 3400HJF050 | 3400HJF100 | 3400HJF150     | 3400HJF200     | 3400HJF250     | 3400HJF300     | 3400HJF400     | 3400HJF500     |
| MSRP                            | \$3,790    | \$3,936    | <b>\$4,630</b> | <b>\$4,851</b> | <b>\$4,949</b> | <b>\$5,064</b> | <b>\$5,595</b> | <b>Inquire</b> |

### 1HP Packages

| CORD LENGTH                     | 50 FT      | 100 FT         | 150 FT         | 200 FT         | 250 FT         | 300 FT         | 400 FT         | 500+ FT        |
|---------------------------------|------------|----------------|----------------|----------------|----------------|----------------|----------------|----------------|
| 120V, SINGLE PHASE PACKAGES     |            |                |                |                |                |                |                |                |
| PART #                          | 4400JF050  | 4400JF100      | 4400JF150      | 4400JF200      | -              | -              | -              | -              |
| MSRP                            | \$2,429    | <b>\$2,997</b> | <b>\$3,555</b> | <b>\$3,891</b> | -              | -              | -              | -              |
| 208-240V, SINGLE PHASE PACKAGES |            |                |                |                |                |                |                |                |
| PART #                          | 4400HJF050 | 4400HJF100     | 4400HJF150     | 4400HJF200     | 4400HJF250     | 4400HJF300     | 4400HJF400     | 4400HJF500     |
| MSRP                            | \$4,259    | \$4,406        | <b>\$5,148</b> | <b>\$5,383</b> | <b>\$5,620</b> | <b>\$5,736</b> | <b>\$5,859</b> | <b>Inquire</b> |

\*Packages come with 4 twist-and-lock nozzles (Cypress, Linden, Sequoia, and Birch). The Willow pattern is achieved by operating the fountain without a nozzle.  
 \*\*3/4HP units operate in as little as 17.5 in. of water. 1HP units operate in as little as 19 in. of water.

Product Notes:

1. Prices in bold have quick disconnect installed on power cords.
2. 3/4 and 1HP, 120V single phase options include C-25 control panel.
3. 3/4 and 1HP, 208-240V single phase options include C-85 control panel.



NEVER enter the water with electrical equipment connected and / or in operation.

# 2HP & 3HP

## J SERIES FOUNTAINS

- 208-240V, single and three phase options
- 1-piece float blends in with water's surface and is easy to install
- Features stainless steel motor top, legs, top and bottom screens, and protective stub cord sleeving
- Premium Nozzles available separately (see pages 16-17)
- Manage from shore with human-rated, GFCI-protected control panel



5 Patterns Available\*



Shallow Operating Depths\*\*



Lighting Packages Available



3-Year Warranty - 2HP Units\*\*\*  
5-Year Warranty - 3HP Units



ETL Listed to UL & CSA Standards

### 2HP Packages

| CORD LENGTH                     | 50 FT          | 100 FT         | 150 FT          | 200 FT          | 250 FT          | 300 FT          | 400 FT          | 500+ FT        |
|---------------------------------|----------------|----------------|-----------------|-----------------|-----------------|-----------------|-----------------|----------------|
| 208-240V, SINGLE PHASE PACKAGES |                |                |                 |                 |                 |                 |                 |                |
| PART #                          | 8400JF050      | 8400JF100      | 8400JF150       | 8400JF200       | 8400JF250       | 8400JF300       | 8400JF400       | 8400JF500      |
| MSRP                            | \$5,721        | <b>\$6,241</b> | <b>\$6,367</b>  | <b>\$6,539</b>  | <b>\$6,741</b>  | <b>\$7,676</b>  | <b>\$11,320</b> | <b>Inquire</b> |
| 208-240V, THREE PHASE PACKAGES  |                |                |                 |                 |                 |                 |                 |                |
| PART #                          | 2.3JF050       | 2.3JF100       | 2.3JF150        | 2.3JF200        | 2.3JF250        | 2.3JF300        | 2.3JF400        | 2.3JF500       |
| MSRP                            | <b>\$9,613</b> | <b>\$9,877</b> | <b>\$10,202</b> | <b>\$10,487</b> | <b>\$11,153</b> | <b>\$11,681</b> | <b>\$12,365</b> | <b>Inquire</b> |

### 3HP Packages

| CORD LENGTH                     | 50 FT          | 100 FT          | 150 FT          | 200 FT          | 250 FT          | 300 FT          | 400 FT          | 500+ FT        |
|---------------------------------|----------------|-----------------|-----------------|-----------------|-----------------|-----------------|-----------------|----------------|
| 208-240V, SINGLE PHASE PACKAGES |                |                 |                 |                 |                 |                 |                 |                |
| PART #                          | 3.1JF050       | 3.1JF100        | 3.1JF150        | 3.1JF200        | 3.1JF250        | 3.1JF300        | 3.1JF400        | 3.1JF500       |
| MSRP                            | \$6,747        | <b>\$7,214</b>  | <b>\$7,385</b>  | <b>\$8,075</b>  | <b>\$8,644</b>  | <b>\$8,992</b>  | <b>\$11,620</b> | <b>Inquire</b> |
| 208-240V, THREE PHASE PACKAGES  |                |                 |                 |                 |                 |                 |                 |                |
| PART #                          | 3.3JF050       | 3.3JF100        | 3.3JF150        | 3.3JF200        | 3.3JF250        | 3.3JF300        | 3.3JF400        | 3.3JF500       |
| MSRP                            | <b>\$9,983</b> | <b>\$10,245</b> | <b>\$10,572</b> | <b>\$11,159</b> | <b>\$11,522</b> | <b>\$12,861</b> | <b>\$13,827</b> | <b>Inquire</b> |

\*Packages include 5 twist-and-lock nozzles (Balsam, Linden, Birch, Spruce, and Redwood).  
 \*\*2HP units operate in as little as 20 in. of water. 3HP units operate in as little as 24 in. of water.  
 \*\*\*Extended warranty available on 2HP units.

Product Notes:

1. Prices in bold have quick disconnect installed on power cords.
2. 2HP, single phase options include C-85 control panel. 3HP, single phase options include C-95 control panel.
3. 2 and 3HP, three phase units include CF-3235 control panel.
4. 460-480V, three phase options available for special order in approved locations only. Contact Kasco for details.



NEVER enter the water with electrical equipment connected and / or in operation.

# 5HP & 7.5HP

## J SERIES FOUNTAINS

- 208-240V, 5HP available as single and three phase options
- 208-240V, 7.5HP available as three phase only
- 1-piece float blends in with water’s surface and is easy to install
- Features stainless steel motor top, legs, top and bottom screens, and protective stub cord sleeving
- Premium Nozzles available separately (see pages 16-17)
- Manage from shore with human-rated, GFCI-protected control panel



5 Patterns Available\*



Shallow Operating Depths\*\*



Lighting Packages Available



5-Year Warranty



ETL Listed to UL & CSA Standards

### 5HP Packages

| CORD LENGTH                     | 100 FT          | 150 FT          | 200 FT          | 250 FT          | 300 FT          | 400 FT          | 500+ FT        |
|---------------------------------|-----------------|-----------------|-----------------|-----------------|-----------------|-----------------|----------------|
| 208-240V, SINGLE PHASE PACKAGES |                 |                 |                 |                 |                 |                 |                |
| PART #                          | 5.1JF100        | 5.1JF150        | 5.1JF200        | 5.1JF250        | 5.1JF300        | 5.1JF400        | 5.1JF500       |
| MSRP                            | <b>\$8,441</b>  | <b>\$9,429</b>  | <b>\$10,164</b> | <b>\$11,540</b> | <b>\$13,783</b> | <b>\$14,911</b> | <b>Inquire</b> |
| 208-240V, THREE PHASE PACKAGES  |                 |                 |                 |                 |                 |                 |                |
| PART #                          | 5.3JF100        | 5.3JF150        | 5.3JF200        | 5.3JF250        | 5.3JF300        | 5.3JF400        | 5.3JF500       |
| MSRP                            | <b>\$10,668</b> | <b>\$11,338</b> | <b>\$12,120</b> | <b>\$12,546</b> | <b>\$15,541</b> | <b>\$16,695</b> | <b>Inquire</b> |

### 7.5HP Packages

| CORD LENGTH                    | 100 FT          | 150 FT          | 200 FT          | 250 FT          | 300 FT          | 400 FT          | 500+ FT        |
|--------------------------------|-----------------|-----------------|-----------------|-----------------|-----------------|-----------------|----------------|
| 208-240V, THREE PHASE PACKAGES |                 |                 |                 |                 |                 |                 |                |
| PART #                         | 7.3JF100        | 7.3JF150        | 7.3JF200        | 7.3JF250        | 7.3JF300        | 7.3JF400        | 7.3JF500       |
| MSRP                           | <b>\$10,941</b> | <b>\$11,850</b> | <b>\$12,430</b> | <b>\$14,328</b> | <b>\$15,404</b> | <b>\$18,081</b> | <b>Inquire</b> |

\*Packages include 5 twist-n-lock nozzles (Balsam, Linden, Birch, Spruce, Redwood).

\*\*5HP units operate in as little as 26 in. of water. 7.5HP units operate in as little as 28 in. of water.

Product Notes:

1. Prices in bold have quick disconnect installed on power cords.
2. 5HP, single phase units include C-95 control panel. 5HP, three phase units include CF-3235 control panel.
3. 7.5HP, three phase units include CF-3075 control panel.
4. 460-480V, three phase options available for special order in approved locations only. Contact Kasco for details.



NEVER enter the water with electrical equipment connected and / or in operation.

# PREMIUM NOZZLES

## FOR J SERIES FOUNTAINS

Further define your J Series experience with a Premium Nozzle, available for all HP sizes. Purchased separately, Kasco Premium Nozzles generate crisp and distinct streams of water, delivering dramatic and captivating displays.



Fern



Available for All J Series Fountains



4 Pattern Choices for 3/4 & 1HP Units



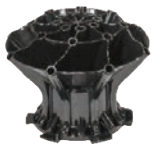
6 Pattern Choices for 2, 3, 5, & 7.5HP Units



Twist-and-lock Installation



Purchased Separately



Mighty Oak



Magnolia



Mahogany



Madrone



Palm

| PATTERN     | 3/4 & 1HP PART NUMBERS & DIMENSIONS (H x W) (FT) |           |           |      | 2, 3, 5 & 7.5HP PART NUMBERS & DIMENSIONS (H x W) (FT) |           |           |           |         |       |
|-------------|--|-----------|-----------|------|--|-----------|-----------|-----------|---------|-------|
|             | PART #   | 3/4HP     | 1HP       | MSRP | PART #   | 2HP       | 3HP       | 5HP       | 7.5HP   | MSRP  |
| Mighty Oak  | 431335K  | 10 x 24   | 13 x 34   | \$60 | 841335K  | 14.5 x 40 | 19.5 x 51 | 24.5 x 58 | 27 x 60 | \$295 |
| Magnolia    | 431325K  | 9 x 29    | 11.5 x 37 | \$60 | 841325K  | 13.5 x 44 | 18 x 60   | 23.5 x 72 | 26 x 80 | \$295 |
| Mahogany    | 431345K  | 11.5 x 28 | 14 x 34   | \$60 | 841345K  | 16 x 40   | 21 x 58   | 28 x 64   | 29 x 72 | \$295 |
| Madrone     | 431330K  | 11.5 x 28 | 14 x 35   | \$60 | 841330K  | 15 x 43   | 20 x 59   | 24 x 70   | 26 x 75 | \$295 |
| Palm        | -  | -         | -         | -    | 841320K  | 12 x 26   | 16 x 36   | 20.5 x 40 | 22 x 42 | \$295 |
| <b>Fern</b> | -  | -         | -         | -    | 841315K  | 12 x 36   | 16 x 54   | 20 x 70   | 24 x 66 | \$295 |