



LIFT STATION AGITATORS

HydraForce™ Lift Station Agitators break up layers of F.O.G. (fat, oil, and grease), reduce odor, and prevent corrosion and blockages.

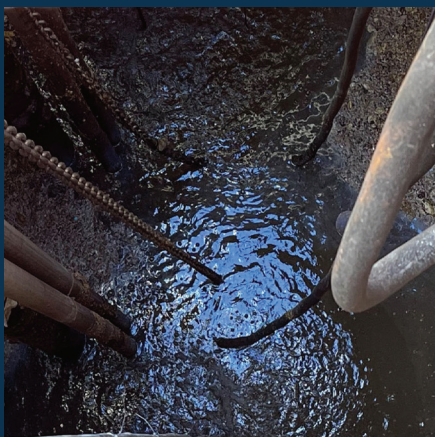
These mixing systems include a mounted compressor that forces air through tubing lines to a suspended single-loop diffuser. This diffuser continuously releases air bubbles that rise to the surface, mixing large volumes of water to solve common wastewater issues.

A FORCE IN WASTEWATER



Contact us today to learn more | 715.262.4488 | kascomarine.com/hydraforce

BEFORE & AFTER



WARRANTY

2-YEAR WARRANTY

on Cabinet, Diffuser, Weighted Tubing, Compressor, and All External Parts

CONTACT KASCO



Learn more about these systems and the difference they can make in your water treatment process.

715.262.4488
kascomarine.com
support@kascomarine.com

THE CHALLENGE

Fat, oil, and grease (F.O.G.) from problematic waste streams (restaurants, food processing plants, breweries, etc.) can accumulate in lift stations causing blockage caps and corrosive buildup. This formation of F.O.G. can be detrimental to equipment as it can clog the flow of water, create foul odors, and increase maintenance requirements.

THE SOLUTION

Moving and agitating F.O.G. is an effective way to reduce and eliminate blockage issues. The HydraForce™ Lift Station Agitator is easy to install and operate, saves costly pumping and maintenance, and extends the life cycle of pumps and other equipment. This mixing system:

- Reduces clogs by breaking up F.O.G. layers
- Keeps solids suspended
- Allows continuous flow to treatment plant
- Reduces odor and harmful gases
- Reduces downtime and maintenance



Kasco Single-loop Diffuser

LIFT STATION PACKAGES

PART #	# OF DIFFUSERS	VOLT (V)	PHASE	COMPRESSOR	AMPS	WEIGHTED TUBING
LS-125	1	120	1	1/4HP	2.5	(1) 50 ft. roll of 3/8 in. weighted tubing
LSH-125	1	240		1/4HP	1.25	(1) 50 ft. roll of 3/8 in. weighted tubing
LS-225	2	120		1/4HP	2.5	(2) 50 ft. rolls of 3/8 in. weighted tubing
LSH-225	2	240		1/4HP	1.25	(2) 50 ft. rolls of 3/8 in. weighted tubing

Product Notes:

1. Systems include stainless steel cabinet, diffuser(s), stainless steel mounting bracket, compressor, intake filter, and weighted tubing.

SIZING RECOMMENDATION

SURFACE AREA	DEPTH OF DIFFUSER BELOW WATER	SYSTEM
Less than 50 ft. ²	Less than 6 ft.	LS-225
Less than 50 ft. ²	More than 6 ft.	LS-125
50 - 100 ft. ²	Less than 6 ft.	(2) LS-225
50 - 100 ft. ²	More than 6 ft.	LS-225
100 - 200 ft. ²	Less than 6 ft.	(3) LS-225
100 - 200 ft. ²	More than 6 ft.	(2) LS-225

Product Notes:

1. Since no two lift stations are alike, the table above is providing general sizing recommendations. Contact Kasco for assistance in sizing a system specific to your application.