



MOVING WATER FORWARD, SINCE 1968



2024 CATALOG

50HZ RETAIL

kascomarine.com

Fountains | Lighting | Surface Aeration | Diffused Aeration | Circulation | Pond Probiotics | De-icers



*Left & Cover: EJ Series Fountain
with New Fern Premium Nozzle*

MOVING WATER FORWARD

At Kasco, we help people realize the full potential of the water in their world. Our products are the most efficient and effective solutions for improving, protecting, and beautifying water.

OUR PEOPLE MAKE KASCO THE BEST IN THE BUSINESS

Superior customer service is in our DNA. From design and development to delivery and support, we provide an unwavering commitment to our customers.



FROM THE FACTORY

Here at Kasco's home facility in Wisconsin, things are feeling "normal" for the first time since 2019. Supply chains are relatively stable, and our warehouse is stocked with raw materials to build the equipment our customers rely on to move their water forward. This stability allows our team to get back to what they do best: seeking opportunities to better meet the needs of our end users and distribution partners.

After two years of focusing on sourcing and qualification of raw materials, our engineering team has turned their attention back to driving improvements in our products. This means ongoing quality improvements to existing products and renewed focus on new product development. These are the things that make our growing team of engineers most happy and bring the most value to users and servicers of our equipment.

After a full year of production in the newly expanded factory, our operations team is working on the next round of improvements. 2023 marked a return to the fast fulfillment and ship times you have come to expect from Kasco, and we look to get even better in 2024.

Our marketing team continues to develop new tools, captivating imagery, and educational content to support our distributors and product owners.



The sales team has eagerly returned to their full schedule of industry conferences, conventions, and customer visits. We have grown our sales and customer service teams so we can continue providing the best support in the industry. If you have questions about our products or a challenging application, please contact us! Our knowledgeable team has a wide range of experiences in lakes, ponds, marinas, and beyond.

As customers continue to face economic pressure from inflation, we will continue to find ways to provide more value for each hard-earned dollar they spend. From breakthrough product innovations to our industry-leading ship times and unparalleled customer support, we work every day to make it easy for you to choose Kasco.

Thank you for making us your partner in Moving Water Forward!

Sincerely,
Your Partners at Kasco



“

As always, the staff at Kasco has been great to work with – from order placement to repairs, they have the answers you’re looking for with quick turnaround to boot! Keep up the good work.”

MIKE



Left - EVFX Fountain
Right - EJ Series Fountain with Linden Pattern

TABLE OF CONTENTS

Moving Water Forward.....	2
Why Kasco.....	3
A Note from the Factory.....	4
Table of Contents.....	7
Fountains	
EJ Series	8
EJ Series Premium Nozzles.....	12
EVFX Series	14
WaterGlow Lighting	18
Composite LED	19
AquatiClear™ Circulators	20
Surface Aerators	24
RobustAire™ Diffused Aeration Systems	28
TeichAire Compressors	36
Unit Mounting Options	37
Pond Probiotics	38
De-icers	40
Warranty, Product Return & Repair.....	42
Shipping	43
Distributor Tools	43



*EJ Series Fountain
with Linden Pattern*

EJ SERIES

Elegant Fountain Displays

Kasco EJ Series Fountains offer dramatic, aesthetically pleasing displays at the best value on the market. Designed with both beauty and function in mind, each package includes multiple twist-and-lock nozzles at no extra charge, allowing you to choose patterns ranging from attention-demanding geysers to elegant 3-tier displays.



Packages include motor unit, 15m mooring ropes, multiple nozzles, and power cord.

Available in 1/2 - 5HP sizes and single and three phase options to fit virtually all applications

2HP per 4,000m² recommended for proper aeration.



*EJ Series Fountain with
Birch Pattern*

5 Display
Patterns



Impressive
Heights & Widths



Easily Change
Patterns



Snap-on
Lights Available



EJ SERIES FOUNTAINS

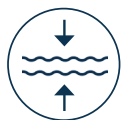
- 1/2, 3/4, 1, 2, & 3HP available as single phase
- 2, 3, & 5HP also available as three phase
- Includes an impeller guard and bottom screen to prevent clogging
- Stub cord includes quick disconnect and stainless steel strain relief
- Customer or installer adds additional length power cord as needed



5 Patterns Available*



Premium Nozzles Available



Shallow Operating Depths**



Optional Lighting Package



2-Year Warranty



CE Marked

EJ FOUNTAIN PACKAGES

PART #	HP	VOLT	PHASE	CORD LENGTH (m)
2400EJF000	1/2	220	1	Stub Cord (1m)
2400EJF010	1/2	220	1	10
2400EJF030	1/2	220	1	30
3400EJF000	3/4	220	1	Stub Cord (1m)
3400EJF010	3/4	220	1	10
3400EJF030	3/4	220	1	30
4400EJF000	1	220	1	Stub Cord (1m)
4400EJF010	1	220	1	10
4400EJF030	1	220	1	30
8400EJF000	2	220	1	Stub Cord (1m)
2.3EHJF000	2	380	3	Stub Cord (1m)
3.1EJF000	3	220	1	Stub Cord (1m)
3.3EHJF000	3	380	3	Stub Cord (1m)
5.3EHJF000	5	380	3	Stub Cord (1m)

*Packages come with 4 twist-n-lock nozzles. To achieve the Willow pattern, operate fountain without nozzle.

** 1/2HP units operate in as little as 45cm of water. 3/4HP units operate in as little as 49cm of water. 1HP units operate in as little as 51cm of water. 2HP units operate in as little as 61cm of water. 3HP units operate in as little as 67cm of water. 5HP units operate in as little as 72cm of water.

Product Notes:

1. Custom cord lengths available. Contact Kasco for details.
2. Food grade mineral oil option available. Contact Kasco for pricing.
3. 2.3, 3.1, 3.3, and 5.3 units feature stainless steel motor tops, legs, and flex sleeving on stub cord.



PATTERN DIMENSIONS

HP	PATTERN DIMENSIONS (H X W) (m)							
	SEQUOIA	CYPRESS	WILLOW	LINDEN	BIRCH	BALSAM	REDWOOD	SPRUCE
1/2	3.2 x 2.4	1.8 x 4.5	1.6 x 5.2	2.3 x 6.7	1.7 x 1.5	-	-	-
3/4	3.5 x 2.4	2.1 x 5.5	1.9 x 5.8	2.7 x 8.5	2.1 x 2	-	-	-
1	-	-	-	3.4 x 9.4	2.3 x 2.4	2.9 x 7.3	4.9 x 1.5	4.7 x 2.1
2	-	-	-	5.2 x 10.7	3.5 x 3	4.9 x 9.4	6.9 x 1.8	6.6 x 2.7
3	-	-	-	5.5 x 11.9	4.9 x 2.7	3.8 x 7.9	7.2 x 1.8	7 x 2.7
5	-	-	-	6.2 x 12.2	5.8 x 3	4.7 x 9.4	8.1 x 1.8	7.9 x 2.7



SEQUOIA



BIRCH



CYPRESS



BALSAM



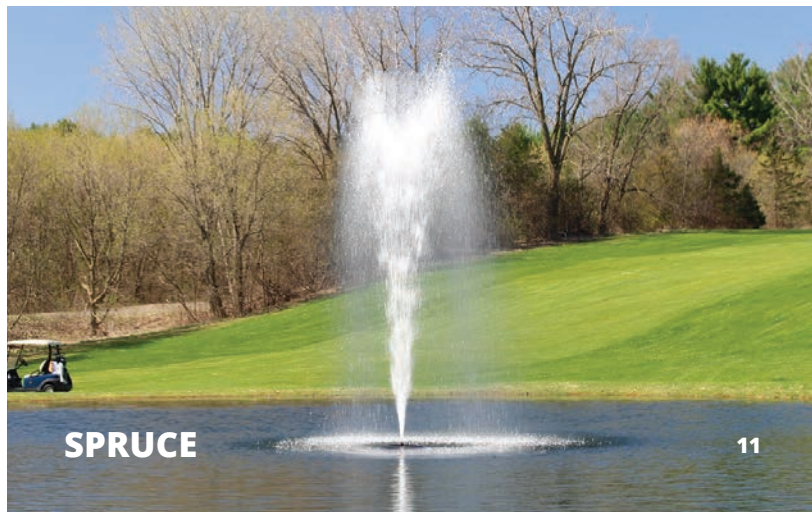
WILLOW



REDWOOD



LINDEN



SPRUCE

PREMIUM NOZZLES

J SERIES FOUNTAINS

Further define your J Series experience with a Premium Nozzle, now available for all HP sizes. Purchased separately, Kasco Premium Nozzles provide crisp and distinct streams of water for dramatic and attention-demanding displays.



NEW Fern Nozzle



Available for ALL EJ Series Fountains



4 Pattern Choices for 1/2 & 3/4HP Units



6 Pattern Choices for 1, 2, 3, & 5HP Units



Twist-and-Lock Installation with Included Tool



Purchased Separately



Mighty Oak



Magnolia



Mahogany



Madrone



Palm



Fern - NEW!

PATTERN	NEW - 1/2 & 3/4HP PART NUMBERS & DIMENSIONS (H x W) (m)			1, 2, 3 & 5HP PART NUMBERS & DIMENSIONS (H x W) (m)				
	PART #	1/2HP	3/4HP	PART #	1HP	2HP	3HP	5HP
Mighty Oak	431335K	2.1 x 5.3	2.9 x 7.9	841335K	3.4 x 10.4	5 x 14.6	5.9 x 17.1	6.9 x 18.3
Magnolia	431325K	2 x 6.1	2.6 x 8.8	841325K	2.9 x 10.1	4.4 x 15.2	5.3 x 17.1	6.2 x 22.6
Mahogany	431345K	2.4 x 5.5	3.2 x 7.9	841345K	3.2 x 9.1	5 x 13.4	5.9 x 17.1	6.9 x 18.9
Madrone	431330K	2.4 x 6.1	3.4 x 8.5	841330K	3.4 x 9.4	5 x 14.6	6.1 x 17.1	7 x 18.9
Palm	-	-	-	841320K	2.6 x 6.1	3.8 x 8.5	4.7 x 10.1	5.2 x 10.4
Fern - NEW!	-	-	-	841315K	2.4 x 8.5	4 x 10.4	4.9 x 15.8	6.1 x 19.8



MIGHTY OAK



MAGNOLIA



MAHOGANY



MADRONE



PALM



FERN - NEW!
Best in Narrow Ponds



EVFX SERIES

The Best of Beauty and Aeration

Kasco EVFX Series is the choice for an elegant display with superior aeration benefits. These high-flow units are efficient, easy to install and operate, and are ideal for many applications.



Packages include motor unit, float, 15m mooring ropes, and power cord.

Available in 1/2 - 3HP sizes and single and three phase options to fit virtually any application.

1.5HP per 4,000m² recommended for proper application.



Classic "V"
Shaped Pattern



Combines
Beauty & Aeration



Snap-on
Lights Available



1-Piece Float
for Easy Assembly

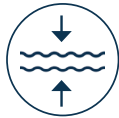


EVFX FOUNTAINS

- 1/2, 3/4, 1, & 3HP available as single phase
- 3HP also available as three phase
- Includes bottom screen to prevent clogging
- Stub cord includes quick disconnect and stainless steel strain relief
- Customer or installer adds additional length power cord as needed



Classic "V"
Shaped Pattern



Shallow Operating
Depths*



Optional Lighting
Package



2-Year Warranty



CE Marked

PART #	HP	VOLT	PHASE	CORD LENGTH (M)
2400EVFX000	1/2	220	1	Stub Cord (1m)
2400EVFX010	1/2	220	1	10
2400EVFX030	1/2	220	1	30
3400EVFX000	3/4	220	1	Stub Cord (1m)
3400EVFX010	3/4	220	1	10
3400EVFX030	3/4	220	1	30
4400EVFX000	1	220	1	Stub Cord (1m)
4400EVFX010	1	220	1	10
4400EVFX030	1	220	1	30
3.1EVFX000	3	220	1	Stub Cord (1m)
3.3EHVFX000	3	380	3	Stub Cord (1m)

*1/2HP can operate in 45cm of water. 3/4HP can operate in 49cm of water. 1HP can operate in 51cm of water. 3HP can operate in 67cm of water.

Product Notes:

1. Custom cord lengths available. Contact Kasco for details.
2. Food grade mineral oil option available. Contact Kasco for pricing.





WATERGLOW LIGHTING

Add Beauty to Your Evening Displays

Kasco WaterGlow Lighting will dramatically illuminate your fountain or surface aerator throughout the evening. Available in composite housings and with several color options, these versatile LED lights are a perfect addition to your display.

Adds breathtaking beauty for extended enjoyment of your water feature.

Several fixture configurations to suit a variety of applications.

Energy efficient with bright technology.



*EJ Series Fountain with
Mahogany Premium Nozzle &
Composite LED Light Kit*

COMPOSITE NON-CE MARKED

These LED Lighting Systems provide classic elegance and include 4 colored lenses to create the perfect illuminated display.

- Available for EJ Fountains, EVFX Fountains, and surface aerators
- Includes light fixtures, snap-on clips, stub cord, colored lenses, lens caps, and waterproof disconnect caps
- 3- and 6-fixture kits available



Displays White and Includes Red, Green, Blue, & Amber Lenses



Durable Composite Fixtures for Watertight Operation



11 Watts and 910 Lumens Per Fixture



2-Year Warranty

PART #	AVAILABLE FOR	CORD LENGTH (m)
LED3C11-000E	1/2 - 1HP units	Stub Cord (1m)
LED6C11-000E	2 - 5HP units	Stub Cord (1m)

LIGHT KIT ACCESSORIES

PART #	DESCRIPTION
840303	3-light kit adapter for 3-piece sectional floats
840306	6-light kit adapter for 3-piece sectional floats



AQUATICLEAR™

Clog-Resistant Waterfront Management

AquatiClear™ by Kasco is a clog-resistant circulator that keeps water near docks, canals, and shorelines free of floating debris and foul odors. Utilizing Clean Current Technology™ (patent pending), AquatiClear features a prop guard with smooth, rounded tines that allow debris to slip by instead of collect around the unit, meaning longer continuous operation and less maintenance.



Packages include motor unit and power cord. Mounting options available.

Crown-like prop guard with smooth, rounded tines decreases clogging from floating algae and debris.

Versatile mounting options allow AquatiClear to direct the flow of water to address specific areas.



BEFORE

Clears Shorelines
of Floating Debris



Debris Slips by
Instead of Clogging



Less Clogging
Reduces Maintenance



AFTER



Kasco AquatiClear
Circulators provide a
strong, directional flow of
water to clean and clear
waterfront property.

AQUATICLEAR™

CLOG-RESISTANT CIRCULATOR

- 220V, single phase options
- Marine-grade stainless steel for saltwater / brackish water compatibility
- Unit only, Horizontal Float, and Universal Mount options available
- Universal Mount Kit packages include Simple Swivel bracket (patent pending) allowing easy rotation of the unit to direct flow of water
- Shallow Water Install Kit allows AquatiClear to be installed in shallower water without creating an audible vortex, or suction sound. Purchased separately.



1/2 and 3/4HP Available



Crown-like Prop Guard
Decreases Clogging from Debris



Clean Current Technology™
(patent pending) Reduces Clogs



2-Year Warranty



CE Marked

PART #	HP	VOLT	PHASE	CORD LENGTH (m)
UNIT ONLY PACKAGES - "EC" (NO MOUNT)				
2400EC000	1/2	220	1	Stub Cord (1 m)
2400EC010	1/2	220	1	10
2400EC030	1/2	220	1	30
3400EC000	3/4	220	1	Stub Cord (1 m)
3400EC010	3/4	220	1	10
3400EC030	3/4	220	1	30
HORIZONTAL FLOAT PACKAGES - "ECFM"				
2400ECFM000	1/2	220	1	Stub Cord (1 m)
2400ECFM010	1/2	220	1	10
2400ECFM030	1/2	220	1	30
3400ECFM000	3/4	220	1	Stub Cord (1 m)
3400ECFM010	3/4	220	1	10
3400ECFM030	3/4	220	1	30
UNIVERSAL MOUNT PACKAGES - "ECDM" (CUSTOMER MUST SUPPLY PIPE)				
2400ECDM000	1/2	220	1	Stub Cord (1 m)
2400ECDM010	1/2	220	1	10
2400ECDM030	1/2	220	1	30
3400ECDM000	3/4	220	1	Stub Cord (1 m)
3400ECDM010	3/4	220	1	10
3400ECDM030	3/4	220	1	30

Product Notes:

1. If AquatiClear is installed less than .5m. below the surface, a Shallow Water Install Kit is recommended. See page 23.
2. Do not install too close to the bottom of water body. Improper placement can disturb bottom sediment. Check local regulations for guidelines and restrictions.
3. Custom cord lengths available. Contact Kasco for details.
4. Food grade mineral oil option available. Contact Kasco for pricing.

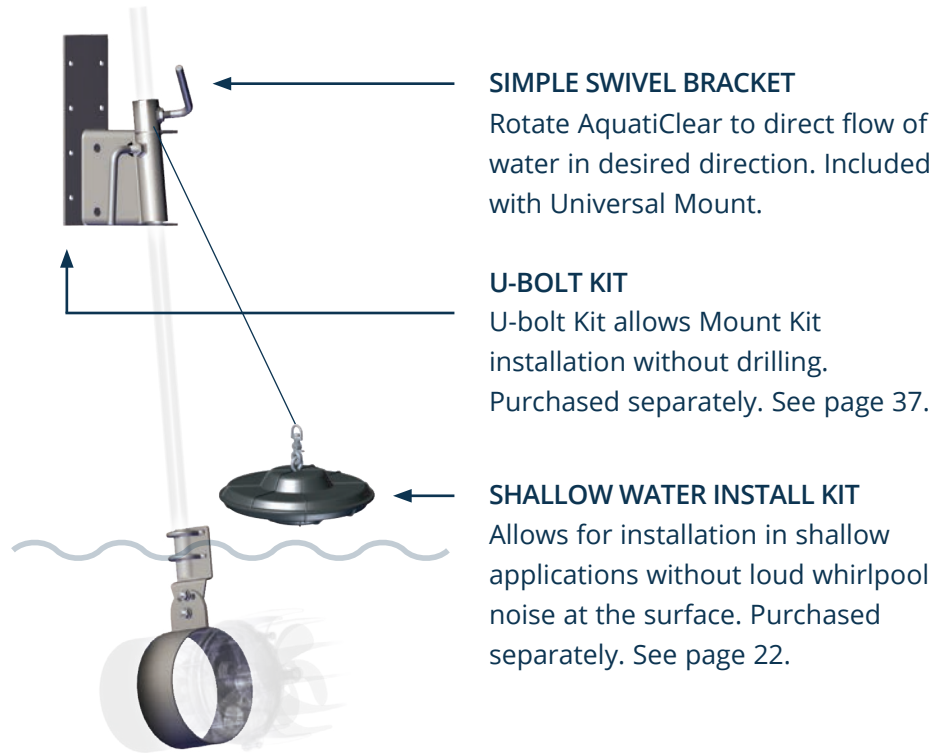
AQUATICLEAR ACCESSORIES

PART #	DESCRIPTION
243609	Shallow Water Install Kit

AquatiClear Mounting Options

Universal Mount

Mount AquatiClear to a dock or similar structure and easily adjust its angle and depth. Adjust rotation with the Simple Swivel bracket (patent pending). Mount includes a lifetime warranty. Optional U-bolt Kit allows mount installation without drilling into structure.

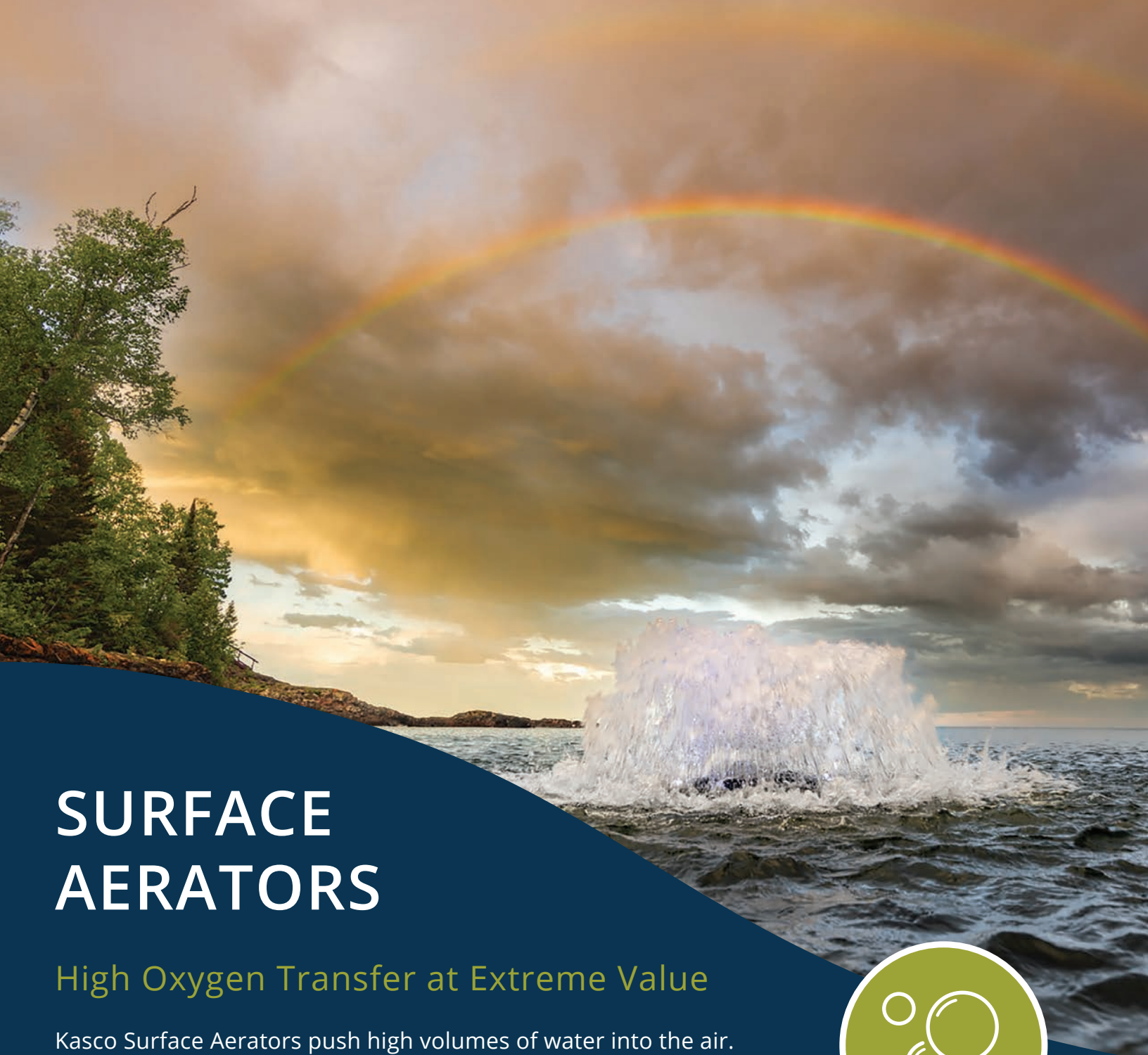


Horizontal Float

Secure AquatiClear on the surface with three ropes and tie-down loops. Three angles of orientation moves water in desired direction. Float includes a 3-year warranty.



AquatiClear by Kasco is the only circulator on the market that runs continuously without the need to clean out clogs from weeds and other debris.



SURFACE AERATORS

High Oxygen Transfer at Extreme Value

Kasco Surface Aerators push high volumes of water into the air. This process increases the overall health of your water and keeps it thoroughly mixed. Introducing oxygen and water movement breaks up stratification, eliminates odor, discourages algae growth, and promotes a healthy aquatic environment.



Packages include motor unit, 15m mooring ropes, and power cord.

Available in 1/2 - 3HP, single or three phase options to fit a variety of applications.

Proven aeration performance for continuous, supplemental, or emergency use.



Great for
Backyard Ponds,
Fish Farms, and More



For Continuous and
Supplemental Use



Pair with
WaterGlow
Lighting Kit



Ideal in Depths
Less than 2.4m



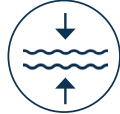
SINGLE PHASE

SURFACE AERATOR

- 1/2, 3/4, 1, 2, & 3HP available as single phase
- 2 and 3HP available as three phase
- BTM SCR models include a bottom screen to prevent clogging
- Stub cord includes quick disconnect and strain relief



Optional Lighting Packages



Shallow Operating Depths*



Pair with Pond Probiotics for Maximized Results



2-Year Warranty



CE Marked

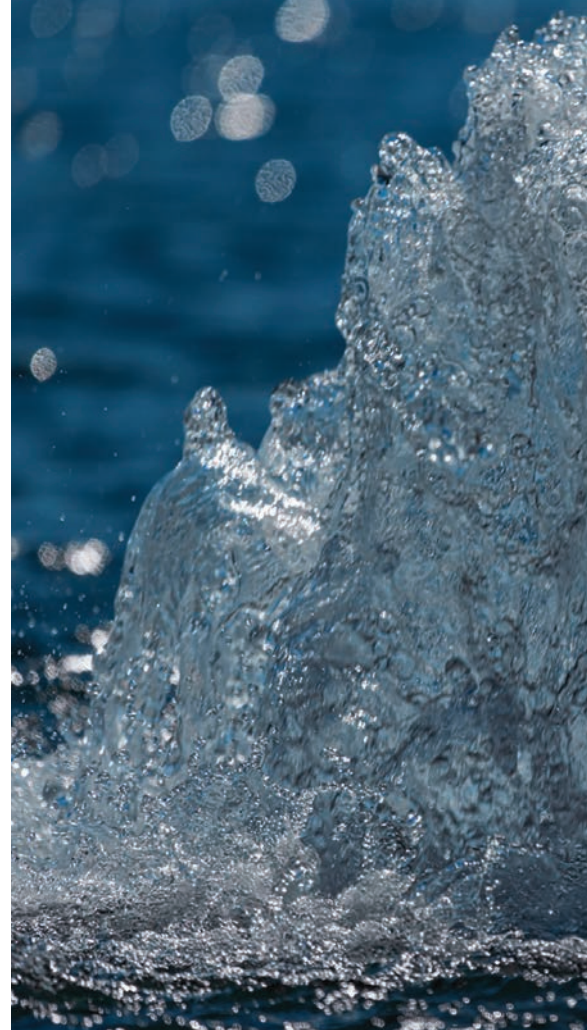
MODEL	HP	VOLT	PHASE	CORD LENGTH (m)
2400EAF000	1/2	220	1	Stub Cord (1m)
2400EAF010	1/2	220	1	10
2400EAF030	1/2	220	1	30
2400EAF000 (BTM SCR)	1/2	220	1	Stub Cord (1m)
2400EAF010 (BTM SCR)	1/2	220	1	10
2400EAF030 (BTM SCR)	1/2	220	1	30
3400EAF000	3/4	220	1	Stub Cord (1m)
3400EAF010	3/4	220	1	10
3400EAF030	3/4	220	1	30
3400EAF000 (BTM SCR)	3/4	220	1	Stub Cord (1m)
3400EAF010 (BTM SCR)	3/4	220	1	10
3400EAF030 (BTM SCR)	3/4	220	1	30
4400EAF000	1	220	1	Stub Cord (1m)
4400EAF010	1	220	1	10
4400EAF030	1	220	1	30
4400EAF000 (BTM SCR)	1	220	1	Stub Cord (1m)
4400EAF010 (BTM SCR)	1	220	1	10
4400EAF030 (BTM SCR)	1	220	1	30
8400EAF000	2	220	1	Stub Cord (1m)
8400EAF000 (BTM SCR)	2	220	1	Stub Cord (1m)
2.3EHAF000	2	380	3	Stub Cord (1m)
2.3EHAF000 (BTM SCR)	2	380	3	Stub Cord (1m)
3.1EAF000	3	220	1	Stub Cord (1m)
3.1EAF000 (BTM SCR)	3	220	1	Stub Cord (1m)
3.3EHAF000	3	380	3	Stub Cord (1m)
3.3EHAF000 (BTM SCR)	3	380	3	Stub Cord (1m)

*1/2HP can operate in 45cm of water. 3/4HP can operate in 49cm of water. 1HP can operate in 51cm of water. 2HP can operate in 61cm of water. 3HP can operate in 67cm of water.

Product Notes:

1. Custom cord lengths available. Contact Kasco for details.
2. Food grade mineral oil option available. Contact Kasco for pricing.







Kasco

ROBUSTAIRE™ DIFFUSED AERATION

Move & Aerate Large Volumes of Water

Restore your water body's natural ecosystem by adding beneficial water mixing and movement with RobustAire™. A shore-mounted compressor pushes air through self-weighted lines to a dual-loop diffuser at the bottom of the pond, lake, or tank. This induces oxygen transfer and beneficial mixing to prevent weed overgrowth, algae, unpleasant odors, fish kills, and other issues.



Packages include dual loop diffuser assembly, compressor, and compressor mounting option.

Small, Medium, and Large Cabinet Systems revolutionize air movement for superior cooling and less maintenance.

Dual-loop diffuser assembly includes built-in strain relief and is self-weighted to land right side up every time.

11-44% More
Efficient than
Competition
(3rd-party tested)



Cabinet Design
Ensures Quiet
Operation



LIFETIME
Warranty on
Diffuser



EASY COMPRESSOR MAINTENANCE

A visual maintenance indicator on the air filter turns red when cleaning is needed. Large air filters allow for easier, less frequent cleaning.

ROBUSTAIRE™

SMALL SYSTEMS WITH AIREGUARD CABINET TECHNOLOGY

- Dual-loop diffuser provides high volumes of upward water movement
- Includes 1 - 3 diffuser assemblies, 1 compressor, and compressor mounting option
- SureSink tubing is not included
- Ideal for small to mid-size ponds and lakes



Small Cabinet (New), Post Mount, and No-Cabinet Option



Internal Filter Indicator for Easy Status Checks



No Electricity in the Water Makes it Safe for Swimming



Lifetime Warranty - Diffuser & Cabinet
 15-Year Warranty - Tubing
 3-Year Warranty - Compressor
 2-Year Warranty - Compressor Piston Cups & Cylinders

SYSTEMS INCLUDE	NO CABINET	POST MOUNT CABINET	NEW SMALL CABINET	REMOTE MANIFOLD SYSTEMS
	220V	220V	220V	
SYSTEM 1 (1) Diffuser Assembly (1) 1/4HP Compressor	RAE1-NC	RAE1-PM	RAE1	Allows remote installation of cabinet, compressors, and valves. Systems include remote valve manifold and valve box.
SYSTEM 2 (2) Diffuser Assemblies (1) 1/2HP Compressor	RAE2-NC	RAE2-PM	RAE2	
SYSTEM 3 (3) Diffuser Assemblies (1) 1/2HP Compressor	RAE3-NC	RAE3-PM	RAE3	

Product Notes:

1. New Small Cabinets (ex. RAE1) are ground-mount standard. Mounting Bracket available separately with part number 774300.
2. RAE systems do not include tubing. Customer must source tubing or purchase separately from Kasco.
3. For tubing lengths over 100m for one diffuser run, use 5/8 in. (15.9mm) SureSink™ tubing for that diffuser run.
4. Remote Manifold systems are available for long distance applications. These systems should be purchased when a power source is not available at the water's edge.
5. No-Cabinet systems (RAE-NC) include universal compressor mounting kit with cooling fan.
6. TeichAire Compressor details are included on page 36.

ROBUSTAIRE™

MEDIUM SYSTEMS WITH AIREGUARD CABINET TECHNOLOGY

- Dual-loop diffuser provides high volumes of upward water movement
- Includes 4 - 6 diffuser assemblies, 2 compressors, and medium cabinet
- SureSink tubing is not included
- Ideal for mid-sized ponds and lakes



Medium Cabinet with
AireGuard Cabinet Technology



External Filter Indicator
for Easy Status Checks



No Electricity in the Water
Makes it Safe for Swimming



Lifetime Warranty - Diffuser & Cabinet
15-Year Warranty - Tubing
3-Year Warranty - Compressor
2-Year Warranty - Compressor Piston Cups & Cylinders

SYSTEMS INCLUDE	MEDIUM CABINET	REMOTE MANIFOLD SYSTEMS
	220V	
SYSTEM 4 (4) Diffuser Assemblies (2) 1/2HP Compressors NEW Medium Cabinet	RAE4	Allows remote installation of cabinet, compressors, and valves. Systems include remote valve manifold and valve box.
SYSTEM 5 (5) Diffuser Assemblies (2) 1/2HP Compressors NEW Medium Cabinet	RAE5	
SYSTEM 6 (6) Diffuser Assemblies (2) 1/2HP Compressors NEW Medium Cabinet	RAE6	



ROBUSTAIRE™

LARGE SYSTEMS WITH AIREGUARD CABINET TECHNOLOGY

- Dual-loop diffuser provides high volumes of upward water movement
- Includes 7 - 12 diffuser assemblies, 3 - 4 compressors, and large cabinet
- SureSink tubing not included
- Ideal for large recreational or industrial lakes



Large Cabinet with AireGuard Cabinet Technology



External Gauges for Easy Status Checks



No Electricity in the Water Makes it Safe for Swimming



Lifetime Warranty - Diffuser & Cabinet
 15-Year Warranty - Tubing
 3-Year Warranty - Compressor
 2-Year Warranty - Compressor Piston Cups & Cylinders

SYSTEMS INCLUDE	LARGE CABINET	REMOTE MANIFOLD SYSTEMS
	220V	
SYSTEM 7 (7) Diffuser Assemblies (3) 1/2HP Compressors NEW Large Cabinet	RAE7	Allows remote installation of cabinet, compressors, and valves. Systems include remote valve manifold and valve box.
SYSTEM 8 (8) Diffuser Assemblies (3) 1/2HP Compressors NEW Large Cabinet	RAE8	
SYSTEM 9 (9) Diffuser Assemblies (3) 1/2HP Compressors NEW Large Cabinet	RAE9	
SYSTEM 10 (10) Diffuser Assemblies (4) 1/2HP Compressors NEW Large Cabinet	RAE10	
SYSTEM 11 (11) Diffuser Assemblies (4) 1/2HP Compressors NEW Large Cabinet	RAE11	
SYSTEM 12 (12) Diffuser Assemblies (4) 1/2HP Compressors NEW Large Cabinet	RAE12	

INSIDE AIREGUARD CABINET TECHNOLOGY

AireGuard Cabinet Technology tackles the biggest stressors on compressor operation: heat and dust.



Air is passed through an external filter removing excess dust and debris.



Powerful fans pull clean air through the compressor allowing it to stay cooler and operate efficiently.



Dual-action filtering and air movement safeguards the entire system.



Cabinet interiors stay cleaner and withstand the toughest outdoor conditions.

*RobustAire™ Large Cabinet with
AireGuard Cabinet Technology*



Compressor Cabinet Details

SMALL CABINET WITH AIREGUARD CABINET TECHNOLOGY

Accommodates 1 compressor and supplies air to 1 - 3 diffuser assemblies. Ground mount standard, mount above ground with separate mounting bracket.



MEDIUM CABINET WITH AIREGUARD CABINET TECHNOLOGY

Accommodates 2 compressors and supplies air to 4 - 6 diffuser assemblies. Mount on shore, away from areas that may flood.



LARGE CABINET WITH AIREGUARD CABINET TECHNOLOGY

Accommodates 3 - 4 compressors and supplies air to 7 - 12 diffuser assemblies. Mount on shore, away from areas that may flood.



POST MOUNT CABINET

Accommodates 1 compressor and supplies air to 1 - 3 diffuser assemblies. Attach cabinet to post or vertical wall.



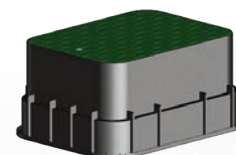
NO-CABINET

Accommodates 1 compressor and supplies air to 1 - 3 diffuser assemblies. Mount in a clean, dry location with protection from outdoor conditions.



REMOTE MANIFOLD SYSTEMS

Allows remote installation of cabinet, compressors, and valves. Systems include remote valve manifold and valve box.



FLOW RATE CHART

DEPTH OF DIFFUSER (m)	KPA	FLOW (M ³ PER 24 HOURS)
2	19.4	5,053
3	26.9	7,580
4	35.8	11,369
5	44.8	17,054
6	62.7	28,821
7	71.7	37,467
8	80.6	48,708
9	89.6	63,320

ROBUSTAIRE ACCESSORIES

PART #	DESCRIPTION	INCLUDES
774300	Small Cabinet Mounting Bracket	Bracket pieces and all assembly hardware
771014	Air Filter Paper Element, Compressor (KM-60 / KM-120)	-
771018	Air Filter Paper Element, Compressor (KM-200)	-
772100	RobustAire™ Diffuser Assembly	(1) diffuser assembly, (1) 3/8 in. (9.55mm) barbed fitting, and (1) 5/8 in. (15.9mm) barbed fitting
773380	SureSink Weighted Tubing Kit 3/8 in. (9.55mm) (100 ft. roll) (30m)	All necessary fittings for attaching to the compressor, diffuser assembly, and for extending length on tubing runs
773580	SureSink Weighted Tubing Kit 5/8 in. (15.9mm) (100 ft. roll) (30m)	All necessary fittings for attaching to the compressor, diffuser assembly, and for extending length on tubing runs
773385	SureSink Weighted Tubing Kit 3/8 in. (9.55mm) (500 ft. roll) (152m)	500 ft. (152m) rolls do not include fittings
773585	Weighted Tubing Kit 5/8 in. (15.9mm) (500 ft. roll) (152m)	500 ft. (152m) rolls do not include fittings
773300	3/8 in. (9.55mm) Tube Fitting Kit (included with 3/8 in. x 100 ft. tubing kits)	(1) 3/8 in. x 3/8 in. barbed connector, (2) 3/8 in. hose clamps
773500	5/8 in. (15.9mm) Tube Fitting Kit (included with 5/8 in. x 100 ft. tubing kits)	(1) 5/8 in. x 5/8 in. barbed connector, (2) 3/8 in. x 5/8 in. barbed connectors, (2) 5/8 in. hose clamps, (2) 3/8 in. hose clamps

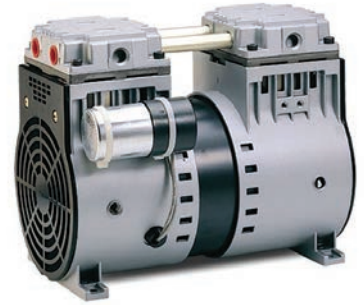


Kasco diffusers provide high volumes of upward water movement.

TEICHAIRE

COMPRESSORS

- 220V
- Quiet, oil-less piston compressors
- Built for continuous-duty, year-round, large aeration applications



ALL COMPRESSORS INCLUDE:

- Pressure relief valve
- Vibration mounts
- Intake air filter assembly
- Brass hose fittings
- Power cord
- Thermal overload protection
- Ramped internal valve plate allowing for restart under load



1/4, 1/2, & 3/4HP
Available



2-Year Warranty



UL & CSA Recognized



CE Marked

PART #	HP	WEIGHT (KG)	AMP @ 0 PSI	AMP @ 20 PSI
KM-60HC	1/4	7	1.1	1.6
KM-120HC	1/2	9	1.5	2.0
KM-200HC	3/4	13	3.1	3.7



UNIT MOUNTING OPTIONS

MOUNT KITS

Secure your Kasco unit to a dock, pier, walkway, or other in-water structure. Choose your desired depth, angle, and flow of water to achieve desired results.

Universal Kits

- For 1/2 and 3/4HP units
- Requires 1 in. / 25 DN nominal threaded / unthreaded pipe

Industrial Kits

- For 1/2, 3/4, and 1HP units
- Requires 1.5 in. / 40 DN nominal threaded / unthreaded pipe



U-bolt Kit Prevents Drilling into Structure
(Purchased separately)



Simple Swivel Directs Water to Desired Area
(Included with kit)



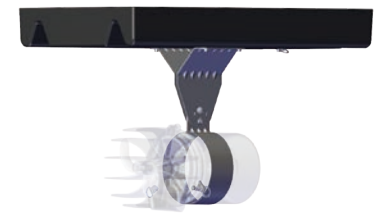
Multiple Angles of Unit Orientation



Lifetime Warranty

HORIZONTAL FLOAT

Suspend your AquatiClear Circulator below the water's surface and safely anchor it to shore. Using stainless steel hardware and components, the float accommodates 1/2 and 3/4HP units.



3 Tie-Down Loops for Secure Installation



Power Cord Strain Relief Clip Included



3 Angles of Unit Orientation



3-Year Warranty

PART #	DESCRIPTION	UNITS COMPATIBLE
243478	Universal Mount with Simple Swivel bracket (patent pending)	1/2 and 3/4HP units
243479	Industrial Mount with Simple Swivel bracket (patent pending)	1/2, 3/4, and 1HP units in harsh conditions
997108K	U-Bolt Kit for Universal and Industrial Kits (allows installation without drilling)	1/2, 3/4, and 1HP units
213001	Horizontal Float with tie-down loops	1/2 and 3/4HP units

* Simple Swivel bracket is patent pending.

Product Notes:

1. For Universal and Industrial Kits, customer-supplied pipe must not exceed 3m.
2. For Universal and Industrial Kits, customer must supply hardware to secure mount.
3. U-bolt Kit (PN: 997108K) available for Universal and Industrial Kits allowing installation without drilling into structure.

POND PROBIOTICS

BENEFICIAL BACTERIA

Pond Probiotics are a safe, non-chemical approach to water quality management and produces a healthy, balanced ecosystem with its highly concentrated, unique blend of naturally occurring bacteria and enzymes. No irrigation restrictions or permit required.



Available as Quick-Dissolving Powder, Tablets, and Slow-Releasing Blocks



Simply Toss into Water
13° C or Warmer



Removes Pond Scum and Floating Particles



Eliminates Waste, Dead Grass, and Foul Odors



Safe for People, Pets, and Livestock

PART #	DESCRIPTION	CONTENTS TREAT
MZ8	(1) 8 oz. WS bag	8 oz. treats 1/2 acre ft.
MZ8C	(40) 8 oz. WS bags (case)	Up to 20 acre ft.
MZ25	25 lb. bag of bulk powder in pail (no WS bags)	Up to 25 acre ft.
MZMP7	Pond Probiotic Muck Pucks - 7 lb. pail with 266 pucks	Up to 10 ft ² per puck
MZMB5	Pond Probiotic Muck Block - (1) 6 lb. block	Up to 6 acre ft.

Product Notes:

1. WS = Water soluble bag
2. One acre foot (1 acre of surface area with 1 ft. of depth) = 325,851 gallons
3. To determine gallons: length (ft.) x width (ft.) x avg. water depth (ft.) x 7.48 = gallons





BEFORE



AFTER

Quick-Dissolving Powder

For small ponds and water gardens. Reapply every 2-3 weeks.



Muck Puck Tablets

For small or medium ponds, as spot treatments. Reapply every 2-3 weeks.



Muck Blocks

For medium ponds, large ponds, or feeder streams. Reapply every 30 days.



Combine Pond Probiotics with a Kasco aeration method for maximum water quality results.



KASCO DE-ICERS

THE #1 Selling De-icer in the World



Protect Your Waterfront from Ice Damage

By pulling warmer water up, Kasco De-icers create an opening at the water's surface, keeping boats and docks safe from damaging ice buildup.

Kasco De-icers create more thrust than any other product on the market. More thrust means more open water to better protect your property.

- Offered as 220V
- Includes (2) 6m suspension ropes
- Mount with ropes or Universal or Industrial Mount Kits



1/2, 3/4, & 1HP Available



2-Year Warranty



CE Marked



Universal Mount



Industrial Mount



Mooring Ropes (Included)



Available to specialty distribution.
Contact Kasco for Details.



Kasco De-icer
880 Deere Road, Prescott, WI 54021-1241 USA
DO NOT TURN ON UNTIL MOTOR IS SUBMERGED
THE MOTOR IS WATER COOLED OF AN OIL FILLED DESIGN WITH SUBMERGED IN OIL AND EQUIPPED WITH A THERMO OVERLOAD PROTECTION. NO FURTHER LUBRICATION IS NECESSARY UNLESS THE MOTOR MUST BE REPLACED AS NECESSARY OR WARRANTY WILL BE VOIDED.
CAUTION: ALWAYS KEEP PEOPLE AND OTHER OBJECTS CLEAR OF THE MOTOR WHEN OPERATING IN WATER.
ATTENTION: Toujours garder les gens et d'autres objets clairs de l'installation dans l'eau.
MODEL 3400D 3/4 HP MFG DATE 11/22/21
SERIAL NO 1247ND343433 ROTATION LH
VOLTS 120 V 60 Hz 1 Phase
AMPS 6.7 A CONTINUOUS DUTY
www.kascomarine.com

WARRANTY PERIODS

EJ SERIES FOUNTAINS

- All HP: 2 years

EVFX FOUNTAINS

- All HP: 2 years

SURFACE AERATORS

- All HP: 2 years

WATERGLOW LIGHTING

- Composite LED: 2 years

AQUATICLEAR™ CIRCULATORS

- All HP: 2 years

ROBUSTAIRE™

- Compressor:
 - Motor: 3 years
 - Piston Cup: 2 years
 - Cylinder: 2 years
- Tubing: 15 years
- Diffuser: Lifetime
- Cabinet: Lifetime

"R" (REPLACEMENT) UNITS

- All HP: 2 years

WARRANTY

STANDARD WARRANTY:

Kasco Marine, Inc. warrants products to be free from defects in material or workmanship under normal use and service. This warranty excludes damage to the equipment from improper handling or installation as well as damage caused by environmental factors (examples include but are not limited to: cuts in or crushing of the power cord, damage to mooring lines and ropes, foreign objects causing damage to props or motor shafts, and improper power feeds). The Kasco Marine, Inc. obligation under this warranty is limited to replacing or repairing, free of charge, any defective part within the warranty period.

All units sent back to the factory or authorized repair center should be accompanied by the repair form, found at kascomarine.com. Customer is responsible to pay shipping charges.

WARRANTY IS VOID IF:

1. The product is not maintained according to the maintenance recommendations supplied in owner's manual.
2. The product is returned for repair without the power cord (cuts in the power cord and field splices are not covered under warranty).
3. The unit, control box, or power cord are altered in any way from original shipment.
4. The product is not used with a GFCI-protected outlet.
5. The product is damaged by unauthorized tampering.
6. The sacrificial anode shows significant deterioration.

PRODUCT RETURN & REPAIR

NEW OR UNUSED PRODUCT RETURN:

If an item has not entered the water, it can be returned to Kasco:

1. Contact Kasco to receive an RMA number and RMA form.
2. Package the item(s) adequately (original packaging preferred) and return to Kasco with completed RMA form and RMA number on the shipping label or written on the box.

IMPORTANT:

- 10% restocking fee will be applied to all returns.
- An item will not be accepted for return if it has been in the water.
- Kasco will not reimburse for product that was damaged during shipment.
- Only new, clean and unused items may be returned for credit.
- Items may not be returned after 6 months from the time of purchase.

REPAIR:

Equipment can be shipped to Kasco or an authorized service center for a repair estimate. Contact us if you'd like to find an authorized repair center near you.

Kasco aims to provide a free cost estimate within 48 hours. After customer approval, the repair can be made in just a few days.

- Please include upper pump housing or wire cage for aerators and de-icers.
- Kasco is not responsible for shipping damage from customer to Kasco.
- Do not send floats. Kasco will charge \$90 for float disassembly and cleaning.
- It is the responsibility of the customer to ship and pay freight to Kasco.

SHIPPING

DAMAGED SHIPMENTS:

Please thoroughly inspect incoming shipments prior to accepting. Once a shipment is accepted by the receiver, it is difficult, if not impossible, to get the freight company to pay for damage. If boxes have been damaged, opened, repackaged, a pallet re-strapped, etc., it is best to simply refuse the delivery.

This ensures the carrier cannot blame the receiver for the damage and that the shipment gets returned to Kasco. In the unfortunate event of damage or shortage to your order, please notify customer service and make a note on any shipping-related documents. Photos of the packaging and product will also help our customer service team expedite your claim and find the fastest resolution.

FREIGHT QUOTES:

Freight quotes should be viewed as estimates and may vary depending on exact date of shipment. Please email freight quotes to support@kascomarine.com and include the below:

- Complete delivery address
- Method of Transportation - Sea Freight, Air Freight or Ground Freight
- Delivery notification contact info

NOTE: Some addresses are extended delivery areas and additional charges may apply.

DISTRIBUTOR TOOLS



KASCO WEBSITE



DISTRIBUTOR PORTAL



ONLINE TRAINING



QUALIFIED LEAD ROUTING



Kasco[®]

MOVING WATER FORWARD, SINCE 1968

kascomarine.com | 715.262.4488 | support@kascomarine.com

800 Deere Road, Prescott, WI U.S.A. 54021