



MOVING WATER FORWARD, SINCE 1968

2023 CATALOG

50HZ

kascomarine.com

Fountains | Surface Aerators | Diffused Aeration | Circulators | Pond Probiotics | De-icers | Mixers

MOVING WATER FORWARD

At Kasco, we help people realize the full potential of the water in their world. Our products are the most efficient and effective solutions for improving, protecting, and beautifying water.

UNMATCHED CUSTOMER SERVICE

Superior customer service is in our DNA. From design and development to delivery and support, we provide an unwavering commitment to our customers.



FROM THE FACTORY

At Kasco, we believe it all begins and ends with our customers. This value drives our ongoing commitment to continuous improvement as we strive to better support our distributors, installers, and end users.

As many industries have been impacted by broad supply chain challenges, we have minimized those effects for our customers by investing in a major expansion of our warehouse and increased inventory levels of our raw materials. This proved effective this past year, as we experienced very limited interruption to supply. We will sustain this focus on inventory and warehouse operations as we head into another year of global disruptions.

In order to meet the market's increasing demand for products, we also expanded our manufacturing capacity with the addition of a larger shop floor and another production line. This allowed us to operate with the industry-leading turnaround time that you expect from Kasco, even during our busiest months. This increased capacity will support future growth as well.

In addition to improving our operations, we believe in offering innovative products that better solve our customers' water challenges. This past year, that included the launch of the innovative, AquatiClear™ product line, which provides waterfront owners a cleaner, more enjoyable waterfront with less hassle than ever before, thanks to the patent-pending, clog-resistant design. We also launched our new, larger diffused aeration systems. These larger cabinets provide more aeration with less maintenance, keeping compressors running, longer thanks to lower operating temperatures and less exposure to dust with our patent-pending Air-Guard Technology.

We are grateful for our talented and committed team across the organization and for the opportunity to serve you, our valued customers and partners. We look forward to a great 2023 together!

*Sincerely,
Your Partners at Kasco*



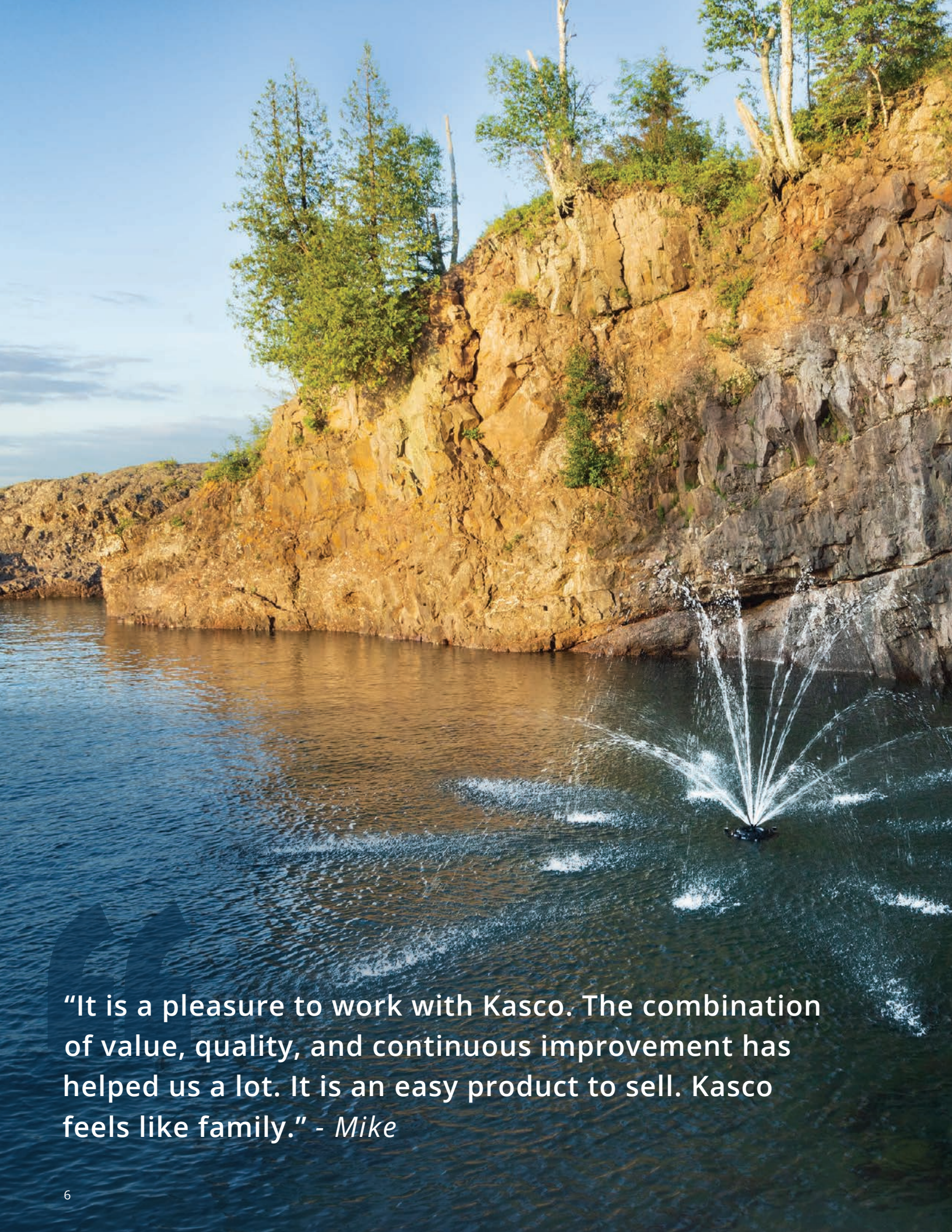
In 2022, our footprint expanded by adding more space for production, inventory, shipping, and office operations.



Our entire team has risen to the unique supply and inventory challenges, allowing us to provide what our customers need.

We hold ourselves to the highest standards, never wavering on the quality of our materials or production processes.





“It is a pleasure to work with Kasco. The combination of value, quality, and continuous improvement has helped us a lot. It is an easy product to sell. Kasco feels like family.” - *Mike*



TABLE OF CONTENTS

Moving Water Forward.....	2
Why Kasco.....	3
A Note from the Factory.....	4
Table of Contents.....	7
Fountains	
EJ Series	8
EJ Series Premium Nozzles.....	12
EVFX Series	14
WaterGlow Lighting	18
Halogen Lighting	19
Composite LED	19
AquatiClear™ Circulators	20
Surface Aerators	24
Robust-Aire™ Diffused Aeration Systems	28
Teich-Aire Compressors.....	32
Unit Mounting Options	33
Pond Probiotics (Macro-Zyme™).....	34
De-icers	36
Warranty, Product Return & Repair	38
Shipping	39
Distributor Tools	39



EJ SERIES

Elegant Fountain Displays


Kasco EJ Series Fountains offer dramatic, aesthetically pleasing displays at the best value on the market. Designed with both beauty and function in mind, each package includes multiple twist-and-lock nozzles at no extra charge, allowing you to choose patterns ranging from attention-demanding geysers to elegant 3-tier displays.



Packages include motor unit, 15m mooring ropes, multiple nozzles, and power cord.

Available in 1/2 - 5HP sizes and single and three phase options to fit virtually all applications

2HP per 4,000m² recommended for proper aeration.



Includes
5 Nozzles



Impressive
Heights & Widths



Easily Change
Patterns



EJ SERIES FOUNTAINS

- 1/2, 3/4, 1, 2, & 3HP available as single phase
- 2, 3, & 5HP also available as three phase
- Includes an impeller guard and bottom screen to prevent clogging
- Stub cord includes quick disconnect and stainless steel strain relief
- Customer or installer adds additional length power cord as needed



5 Patterns
Included



Premium Nozzles
Available



Optional Lighting
Packages



2-Year Warranty



CE Marked

EJ FOUNTAIN PACKAGES

PART #	HP	VOLT	PHASE	CORD LENGTH (m)
2400EJF000	1/2	220	1	Stub Cord (1m)
2400EJF010	1/2	220	1	10
3400EJF000	3/4	220	1	Stub Cord (1m)
3400EJF010	3/4	220	1	10
4400EJF000	1	220	1	Stub Cord (1m)
4400EJF010	1	220	1	10
8400EJF000	2	220	1	Stub Cord (1m)
2.3EHJF000	2	380	3	Stub Cord (1m)
3.1EJF000	3	220	1	Stub Cord (1m)
3.3EHJF000	3	380	3	Stub Cord (1m)
5.3EHJF000	5	380	3	Stub Cord (1m)

Product Notes:

1. 30m and 60m cord lengths available. Contact Kasco for details.

PATTERN DIMENSIONS

HP	PATTERN DIMENSIONS (H X W) (m)							
	SEQUOIA	CYPRESS	WILLOW	LINDEN	BIRCH	BALSAM	REDWOOD	SPRUCE
1/2	3.2 x 2.4	1.8 x 4.5	1.6 x 5.2	2.3 x 6.7	1.7 x 1.5	-	-	-
3/4	3.5 x 2.4	2.1 x 5.5	1.9 x 5.8	2.7 x 8.5	2.1 x 2	-	-	-
1	-	-	-	3.4 x 9.4	2.6 x 1.8	3.4 x 7.3	4.9 x 1.5	4.7 x 2.1
2	-	-	-	5.2 x 10.7	3.5 x 3	4.9 x 9.4	6.9 x 1.8	6.6 x 2.7
3	-	-	-	5.5 x 11.9	4.9 x 2.7	3.8 x 7.9	7.2 x 1.8	7 x 2.7
5	-	-	-	6.2 x 12.2	5.8 x 3	4.7 x 9.4	8.1 x 1.8	7.9 x 2.7



SEQUOIA



BIRCH



CYPRESS



BALSAM



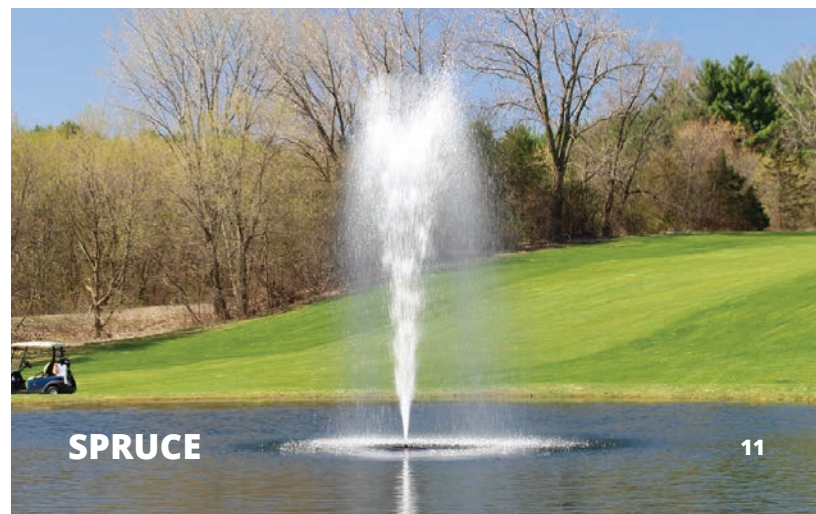
WILLOW



REDWOOD



LINDEN



SPRUCE

PREMIUM NOZZLES

J SERIES FOUNTAINS

Further define your J Series experience with a Premium Nozzle, now available for all HP sizes. Purchased separately, Kasco Premium Nozzles provide crisp and distinct streams of water for dramatic and attention-demanding displays.



Available for ALL
EJ Series Fountains



4 Pattern Choices for
1/2 & 3/4HP Units



5 Pattern Choices for
1, 2, 3, & 5HP Units



Simple Twist-and-Lock
Installation



Purchased
Separately



Mighty Oak



Magnolia



Mahogany



Madrone



Palm

PATTERN	NEW - 1/2 & 3/4HP PART NUMBERS & DIMENSIONS (H x W) (m)			1, 2, 3 & 5HP PART NUMBERS & DIMENSIONS (H x W) (m)				
	PART #	1/2HP	3/4HP	PART #	1HP	2HP	3HP	5HP
Mighty Oak	431335K	2.1 x 5.3	2.9 x 7.9	841335K	3.4 x 10.4	5 x 14.6	5.9 x 17.1	6.9 x 18.3
Magnolia	431325K	2 x 6.1	2.6 x 8.8	841325K	2.9 x 10.1	4.4 x 15.2	5.3 x 17.1	6.2 x 22.6
Mahogany	431345K	2.4 x 5.5	3.2 x 7.9	841345K	3.2 x 9.1	5 x 13.4	5.9 x 17.1	6.9 x 18.9
Madrone	431330K	2.4 x 6.1	3.4 x 8.5	841330K	3.4 x 9.4	5 x 14.6	6.1 x 17.1	7 x 18.9
Palm	-	-	-	841320K	2.6 x 6.1	3.8 x 8.5	4.7 x 10.1	5.1 x 10.4



MIGHTY OAK



MAGNOLIA



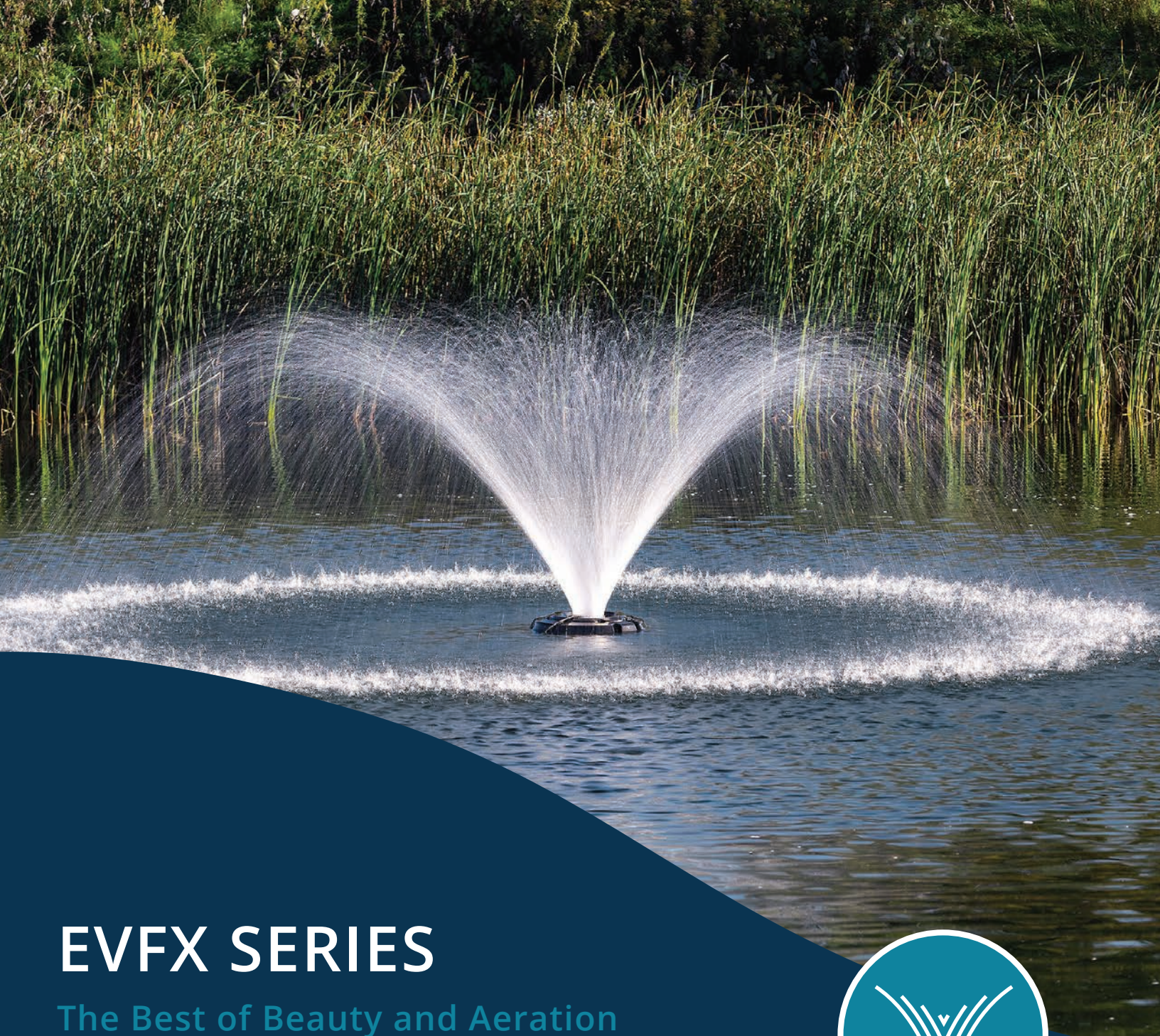
MAHOGANY



MADRONE



PALM



EVFX SERIES

The Best of Beauty and Aeration

Kasco EVFX Series is the choice for an elegant display with superior aeration benefits. These high-flow units are efficient, easy to install and operate, and are ideal for many applications.



Packages include motor unit, float, 15m mooring ropes, and power cord.

Available in 1/2 - 3HP sizes and single and three phase options to fit virtually any application.

1.5HP per 4,000m² recommended for proper application.



Classic "V"
Shaped Pattern



Combines
Beauty & Aeration



1-Piece Float
For Easy Assembly



EVFX FOUNTAINS

- 1/2, 3/4, 1, & 3HP available as single phase
- 3HP also available as three phase
- Includes bottom screen to prevent clogging
- Stub cord includes quick disconnect and stainless steel strain relief
- Customer or installer adds additional length power cord as needed



1/2, 3/4, 1, &
3HP Available



Classic "V"
Shaped Pattern



Optional Lighting
Packages



2-Year Warranty



CE Marked

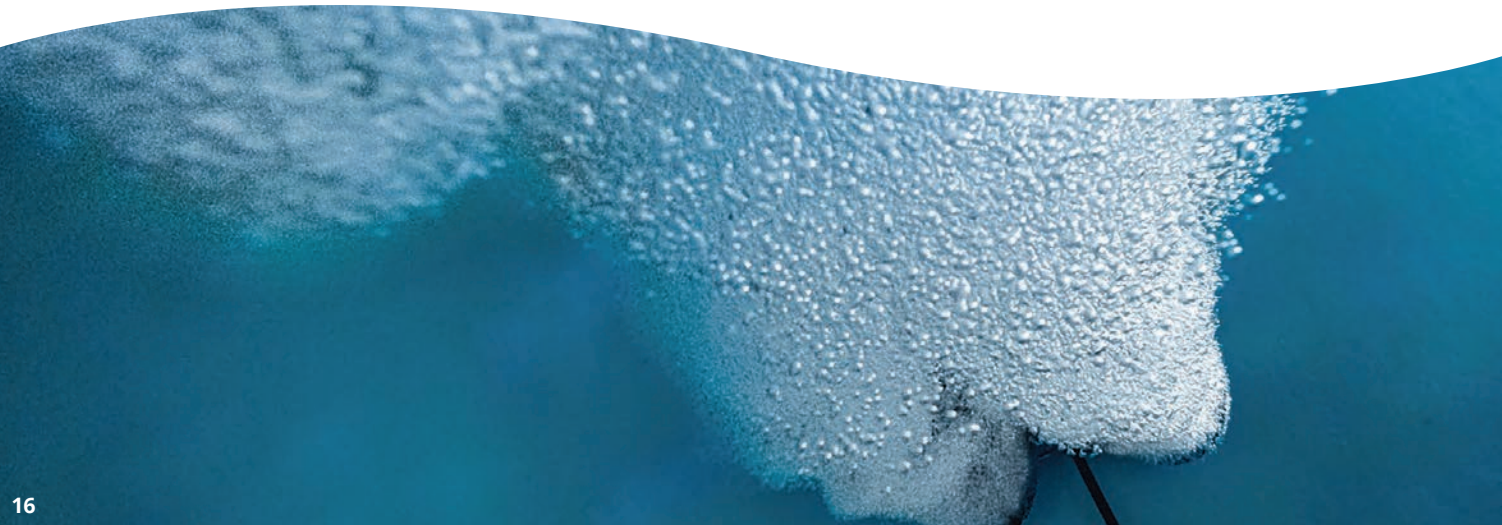
PART #	HP	VOLT	PHASE	CORD LENGTH (M)
2400EVFX000	1/2	220	1	Stub Cord (1m)
2400EVFX010	1/2	220	1	10
3400EVFX000	3/4	220	1	Stub Cord (1m)
3400EVFX010	3/4	220	1	10
4400EVFX000	1	220	1	Stub Cord (1m)
4400EVFX010	1	220	1	10
3.1EVFX000	3	220	1	Stub Cord (1m)
3.3EHVFX000	3	380	3	Stub Cord (1m)

Product Notes:

1. 30m and 60m cord lengths available. Contact Kasco for details.



Enjoy your EVFX Fountain
at night with easy-to-
install lighting systems.







WATERGLOW LIGHTING

Add Beauty to Your Evening Displays

Kasco WaterGlow Lighting will dramatically illuminate your fountain or surface aerator throughout the evening. Available in composite housings and with several color options, these versatile LED lights are a perfect addition to your display.

Adds breathtaking beauty for extended enjoyment of your water feature.

Several fixture configurations to suit a variety of applications.

Energy efficient with bright technology.



HALOGEN CE MARKED

- Durable bronze fixtures
- Available for EJ and EVFX fountains
- Model LE275 includes (2) 75W MR-16 halogen lights
- Model LE375 includes (3) 75W MR-16 halogen lights
- Includes fixtures and stub cord



Displays White



2-Year Warranty



CE Marked



PART #	AVAILABLE FOR	CORD LENGTH (m)
LE275000	1/2 & 3/4HP units	Stub Cord (1m)
LE375000	1 - 5HP units	Stub Cord (1m)

COMPOSITE NON-CE MARKED

- Available for EJ Fountains, EVFX Fountains, and surface aerators
- One-piece composite housing features ultrasonic weld for water-tight operation
- Includes light fixtures, stub cord, colored lenses, lens caps, and waterproof disconnect caps
- Each 11-watt fixture is rated at 910 lumens



Displays White and
Includes Red, Green,
Blue, & Amber Lenses



2-Year Warranty



PART #	AVAILABLE FOR	CORD LENGTH (m)
LED3C11-000E	1/2 - 1HP units	Stub Cord (1m)
LED6C11-000E	2 - 5HP units	Stub Cord (1m)



AQUATICLEAR™

Clog-Resistant Waterfront Management

AquatiClear™ by Kasco is a clog-resistant circulator that keeps water near docks, canals, and shorelines free of floating debris and foul odors. Utilizing Clean Current Technology (patent pending), AquatiClear features a prop guard with smooth, rounded tines that allow debris to slip by instead of collect around the unit, meaning longer continuous operation and less maintenance.



Packages include motor unit and power cord. Mounting options and control panel available.

Crown-like prop guard with smooth, rounded tines decreases clogging from floating algae and debris.

Versatile mounting options allow AquatiClear to direct the flow of water to address specific areas.

Clears Shorelines
of Floating Debris



Debris Slips by
Instead of Clogging



Less Clogging
Reduces Maintenance



Kasco AquatiClear
Circulators provide a
strong, directional flow of
water to clean and clear
waterfront property.



BEFORE



AFTER

AQUATICLEAR™

CLOG-RESISTANT CIRCULATOR

- 220V, single phase options
- Marine-grade stainless steel for saltwater / brackish water compatibility
- Horizontal Float Kit and Universal Mount Kit options
- Universal Mount Kit packages include Simple Swivel bracket (patent pending) allowing easy rotation of the unit to direct flow of water
- **NEW** Shallow Water Install Kit allows AquatiClear to be installed in shallower water without creating an audible vortex, or suction sound. Purchased separately.



1/2 and 3/4HP
Available



Clean Current Technology
(patent pending) Reduces Clogs



2-Year Warranty



CE Marked

PART #	HP	VOLT	PHASE	CORD LENGTH (m)
UNIT ONLY PACKAGES (NO MOUNT)				
2400EC000	1/2	220	1	Stub Cord (1m)
2400EC010	1/2	220	1	10
3400EC000	3/4	220	1	Stub Cord (1m)
3400EC010	3/4	220	1	10
HORIZONTAL FLOAT PACKAGES				
2400ECFM000	1/2	220	1	Stub Cord (1m)
2400ECFM010	1/2	220	1	10
3400ECFM000	3/4	220	1	Stub Cord (1m)
3400ECFM010	3/4	220	1	10
UNIVERSAL MOUNT PACKAGES (CUSTOMER MUST SUPPLY PIPE)				
2400ECDM000	1/2	220	1	Stub Cord (1m)
2400ECDM010	1/2	220	1	10
3400ECDM000	3/4	220	1	Stub Cord (1m)
3400ECDM010	3/4	220	1	10

Product Notes:

1. Without the Shallow Water Install Kit, Kasco recommends installing AquatiClear more than .6m below the surface to prevent audible unit ventilation.
2. Do not install too close to the bottom of water body. Improper placement can disturb bottom sediment. Check local regulations for guidelines and restrictions.
3. 30m and 60m cord lengths available. Contact Kasco for details.

CLEAN CURRENT TECHNOLOGY



Revolutionary crown-like prop guard prevents weeds, algae, and other floating debris from clogging. AquatiClear is allowed to run continuously, creating clean and beautiful waterfronts.

POWERFUL MIXING



Using a 3/4HP unit and in just 30 minutes, dye is completely mixed throughout this 6 ft. deep, 800,000 gallon pond.

BEFORE MIXING



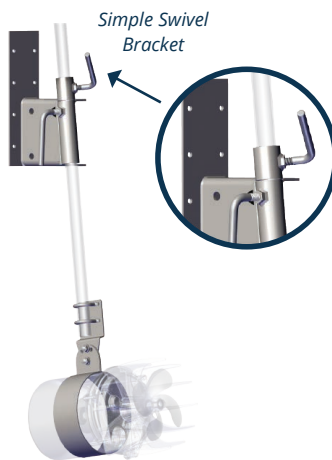
AFTER MIXING



Mounting Options

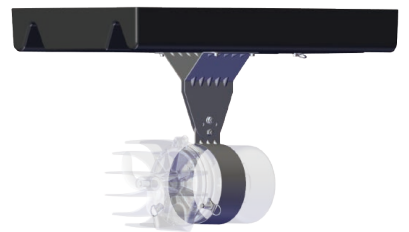
Universal Mount

Mount to docks or similar structures and adjust angle and depth. Adjust rotation with the Simple Swivel bracket (patent pending). Mount includes lifetime warranty.



Horizontal Float

Secure to the shore with three ropes and tie-down loops. Three angles of orientation directs flow to a desired area. Carries a 3-year warranty.



NEW Shallow Water Install Kit

The Shallow Water Install Kit eliminates the vortex suction sound, known as ventilation, that can sometimes occur when units are installed close to the surface. This means AquatiClear can be installed in shallower water without disrupting the lake bottom or creating a loud sound. These kits are purchased separately with part number 243609.





SURFACE AERATORS

High Oxygen Transfer at Extreme Value

Kasco Surface Aerators push high volumes of water into the air. This process increases the overall health of your water and keeps it thoroughly mixed. Introducing oxygen and water movement breaks up stratification, eliminates odor, discourages algae growth, and promotes a healthy aquatic environment.

Packages include motor unit, (2) 15m mooring ropes, and power cord.

Available in 1/2 - 3HP, single or three phase options to fit a variety of applications.

Proven aeration performance for continuous, supplemental, or emergency use.





Great for
Backyard Ponds,
Fish Farms, and More



For Continuous and
Supplemental Use



Pair with
WaterGlow™
Lighting Kit



Ideal in Depths
Less than 2.4m



SINGLE PHASE

SURFACE AERATOR

- 1/2, 3/4, 1, 2, & 3HP available as single phase
- 2 and 3HP available as three phase
- BTM SCR models include a bottom screen to prevent clogging
- Stub cord includes quick disconnect and strain relief



1/2, 3/4, 1, 2,
& 3HP Available



Optional Lighting
Packages



Pair with Pond Probiotics
for Maximized Results



2-Year Warranty



CE Marked

MODEL	HP	VOLT	PHASE	CORD LENGTH (m)
2400EAF000	1/2	220	1	Stub Cord (1m)
2400EAF010	1/2	220	1	10
2400EAF000 (BTM SCR)	1/2	220	1	Stub Cord (1m)
2400EAF010 (BTM SCR)	1/2	220	1	10
3400EAF000	3/4	220	1	Stub Cord (1m)
3400EAF010	3/4	220	1	10
3400EAF000 (BTM SCR)	3/4	220	1	Stub Cord (1m)
3400EAF010 (BTM SCR)	3/4	220	1	10
4400EAF000	1	220	1	Stub Cord (1m)
4400EAF010	1	220	1	10
4400EAF000 (BTM SCR)	1	220	1	Stub Cord (1m)
4400EAF010 (BTM SCR)	1	220	1	10
8400EAF000	2	220	1	Stub Cord (1m)
8400EAF000 (BTM SCR)	2	220	1	Stub Cord (1m)
2.3EHAF000	2	380	3	Stub Cord (1m)
2.3EHAF000 (BTM SCR)	2	380	3	Stub Cord (1m)
3.1EAF000	3	220	1	Stub Cord (1m)
3.1EAF000 (BTM SCR)	3	220	1	Stub Cord (1m)
3.3EHAF000	3	380	3	Stub Cord (1m)
3.3EHAF000 (BTM SCR)	3	380	3	Stub Cord (1m)

Product Notes:
 1. 30m and 60m cord lengths available. Contact Kasco for details.



A photograph of the Robust-Aire diffused aeration equipment. It includes a dual-loop diffuser assembly with two black hoses connected to a metal manifold, and a large coil of black self-weighted tubing secured with white straps. The equipment is resting on a green grassy bank next to a body of water.

ROBUST-AIRE™ DIFFUSED AERATION

Move & Aerate Large Volumes of Water

Restore your water body's natural ecosystem by adding beneficial water mixing and movement with Robust-Aire™. A shore-mounted compressor pushes air through self-weighted lines to a diffuser at the bottom of the pond, lake, or tank. This induces oxygen transfer and beneficial mixing to prevent weed overgrowth, algae, unpleasant odors, fish kills, and other issues.

Packages include dual loop diffuser assembly, compressor, and compressor mounting option. Some models include SureSink Tubing.

Independently tested to be up to 44% more efficient than competing diffusers.

Dual-loop diffuser assembly includes built-in strain relief and is self-weighted to land right side up every time.





Longest-lasting,
Most Efficient
Diffuser



LIFETIME
Warranty on
Diffuser



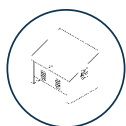
Most Efficient at
2.5m or Deeper



ROBUST-AIRE™

DUAL-LOOP DIFFUSED AERATION SYSTEM

- Dual loop diffuser provides high volumes of upward water movement
- Base mount, post mount, or no-cabinet compressor mounting options
- Large air filters allow for less frequent maintenance
- Visual maintenance indicators quickly alerts when air filters need attention
- Lifetime warranty on diffuser assembly and cabinet



Base Mount, Post Mount,
and No-Cabinet Option



34% Quieter than
Previous Models



Diffuser Membrane
Will Not Clog



No Electricity in the Water
Makes it Safe for Swimming



LIFETIME Warranty - Diffuser & Cabinet
15-Year Warranty - Tubing
2-Year Warranty - Compressor

SYSTEMS INCLUDE	NO CABINET	POST MOUNT CABINET	BASE MOUNT CABINET
	220V	220V	220V
SYSTEM 1 (1) Diffuser Assembly (1) 1/4HP Compressor	RAE1-NC	RAE1-PM	RAE1
SYSTEM 2 (2) Diffuser Assemblies (1) 1/2HP Compressor	RAE2-NC	RAE2-PM	RAE2
SYSTEM 3 (3) Diffuser Assemblies (1) 1/2HP Compressor	RAE3-NC	RAE3-PM	RAE3
SYSTEM 4 (4) Diffuser Assemblies (2) 1/2HP Compressors	-	-	RAE4
SYSTEM 5 (5) Diffuser Assemblies (2) 1/2HP Compressors	-	-	RAE5
SYSTEM 6 (6) Diffuser Assemblies (2) 1/2HP Compressors	-	-	RAE6

Product Notes:

1. RAE systems do not include tubing. Customer must source tubing or purchase separately from Kasco.
2. For tubing lengths over 100m for one diffuser run, use 5/8 in. (15.9mm) SureSink™ tubing for that diffuser run.
3. Remote Manifold systems are available for long distance applications. These systems move the diffuser valves from the compressor to a remote location.
4. Systems that include both double-piston compressors and remote manifolds are available.
5. No-Cabinet systems (RAE-NC) include universal compressor mounting kit with cooling fan.
6. Teich-Aire Compressor details are included on pg. 32.

SIZING CHART

SURFACE AREA (m²)	AVERAGE DEPTH (m)		
	3-4	4-5	5-6
4,000	RAE1	RAE1	RAE1
6,000	RAE2	RAE2	RAE1
8,000	RAE3	RAE3	RAE2
10,000	RAE3	RAE3	RAE3
12,000	RAE4	RAE4	RAE3
14,000	RAE4	RAE4	RAE4
16,000	RAE5	RAE5	RAE4
18,000	RAE6	RAE5	RAE5
20,000	RAE6	RAE6	RAE5
22,000	RAE6	RAE6	RAE6
24,000	Multiple	Multiple	RAE6
26,000	Multiple	Multiple	RAE6

FLOW RATE CHART

DEPTH OF DIFFUSER (m)	KPA	FLOW (M³ PER 24 HOURS)
2	19.4	5,053
3	26.9	7,580
4	35.8	11,369
5	44.8	17,054
6	62.7	28,821
7	71.7	37,467
8	80.6	48,708
9	89.6	63,320

ROBUST-AIRE ACCESSORIES

PART #	DESCRIPTION	INCLUDES
771014	Air Filter Paper Element, Compressor (KM-60 / KM-120)	
771018	Air Filter Paper Element, Compressor (KM-200)	
772100	Robust-Aire™ Diffuser Assembly	(1) diffuser assembly, (1) 3/8 in. (9.55mm) barbed fitting, and (1) 5/8 in. (15.9mm) barbed fitting
773380	Weighted Tubing Kit 3/8 in. (9.55mm) (100 ft. roll) (30m)	All necessary fittings for attaching to the compressor, diffuser assembly, and for extending length on tubing runs
773580	Weighted Tubing Kit 5/8 in. (15.9mm) (100 ft. roll) (30m)	All necessary fittings for attaching to the compressor, diffuser assembly, and for extending length on tubing runs
773385	Weighted Tubing Kit 3/8 in. (9.55mm) (500 ft. roll) (152m)	500 ft. (152m) rolls do not include fittings
773585	Weighted Tubing Kit 5/8 in. (15.9mm) (500 ft. roll) (152m)	500 ft. (152m) rolls do not include fittings
773300	3/8 in. (9.55mm) Tube Fitting Kit (included with 3/8 in. x 100 ft. tubing kits)	(1) 3/8 in. x 3/8 in. barbed connector, (2) 3/8 in. hose clamps
773500	5/8 in. (15.9mm) Tube Fitting Kit (included with 5/8 in. x 100 ft. tubing kits)	(1) 5/8 in. x 5/8 in. barbed connector, (2) 3/8 in. x 5/8 in. barbed connectors, (2) 5/8 in. hose clamps, (2) 3/8 in. hose clamps



Kasco diffusers provide high volumes of upward water movement.

TEICH-AIRE

COMPRESSORS

- 220V
- Quiet, oil-less piston compressors
- Built for continuous-duty, year-round, large aeration applications



ALL COMPRESSORS INCLUDE:

- Pressure relief valve
- Vibration mounts
- Intake air filter assembly
- Brass hose fittings
- Power cord
- Thermal overload protection
- Ramped internal valve plate allowing for restart under load



1/4, 1/2, & 3/4HP
Available



2-Year Warranty



UL & CSA Recognized



CE Marked

PART #	HP	WEIGHT (KG)	AMP @ 0 PSI	AMP @ 20 PSI
KM-60HC	1/4	7	1.1	1.6
KM-120HC	1/2	9	1.5	2.0
KM-200HC	3/4	13	3.1	3.7



UNIT MOUNTING OPTIONS

Mounting Kits

Secure your Kasco unit to a dock, pier, walkway, or other in-water structure. Choose your desired depth, angle, and flow of water to achieve desired results.

Universal Kits

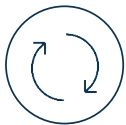
Secure 1/2 and 3/4HP units, requires 1 in. / DN 25 nominal threaded or unthreaded pipe, supplied by customer. Includes Simple Swivel bracket (patent pending).

Industrial Kits

Secure 1/2, 3/4, and 1HP units, requires 1.5 in. / DN 40 nominal threaded or unthreaded pipe, supplied by customer. Includes Simple Swivel bracket (patent pending).



Stainless Steel Hardware



Simple Swivel Bracket Directs Water to Desired Area



Multiple Angles of Unit Orientation



Lifetime Warranty



Universal Kit

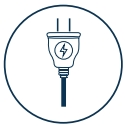
Industrial Kit

Horizontal Float

Suspend your AquatiClear Circulator below the water's surface and safely anchor it to shore. Using stainless steel hardware and components, the float accommodates 1/2 and 3/4HP units.



3 Tie-Down Loops for Secure Installation



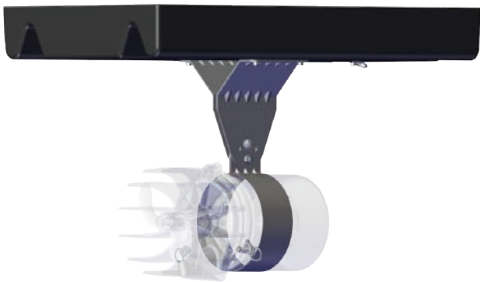
Power Cord Strain Relief Clip Included



3 Angles of Unit Orientation



3-Year Warranty



PART #	DESCRIPTION	UNITS COMPATIBLE
243478	Universal Mount with Simple Swivel bracket (patent pending)	1/2 and 3/4HP units
243479	Industrial Mount with Simple Swivel bracket (patent pending)	1/2, 3/4, and 1HP units in harsh conditions
997108K	U-Bolt Kit for Universal and Industrial Kits (allows installation without drilling)	1/2, 3/4, and 1HP units
213001	Horizontal Float with tie-down loops	1/2 and 3/4HP units

Product Notes:

1. For Universal and Industrial Kits, customer-supplied pipe must not exceed 3m.
2. For Universal and Industrial Kits, customer must supply hardware to secure mount.
3. U-bolt Kit (PN: 997108K) available for Universal and Industrial Kits allowing installation without drilling into structure.

POND PROBIOTICS

MACRO-ZYME™ BENEFICIAL BACTERIA

Macro-Zyme is a safe, non-chemical approach to water quality management and produces a healthy, balanced ecosystem with its highly concentrated, unique blend of naturally occurring bacteria and enzymes. No irrigation restrictions or permit required.



Available as Quick-Dissolving Powder, Tablets, and Slow-Releasing Blocks



Simply Toss into Water
13° C or Warmer



Removes Pond Scum
and Floating Particles



Eliminates Waste, Dead
Grass, and Foul Odors



Safe for People, Pets,
and Livestock

PART #	DESCRIPTION	CONTENTS TREAT
MZ8	(1) 8 oz. WS bag	8 oz. treats 1/2 acre ft.
MZ8C	(40) 8 oz. WS bags (case)	Up to 20 acre ft.
MZ25	25 lb. bag of bulk powder in pail (no WS bags)	Up to 25 acre ft.
MZMP7	Macro-Zyme Muck Pucks - 7 lb. pail with 266 pucks	Up to 10 ft² per puck
MZMB5	Macro-Zyme Muck Block - (1) 6 lb. block	Up to 6 acre ft.

- Product Notes:
- 1. WS = Water soluble bag
 - 2. One acre foot (1 acre of surface area with 1 ft. of depth) = 325,851 gallons
 - 3. To determine gallons: length (ft.) x width (ft.) x avg. water depth (ft.) x 7.48 = gallons



Quick-Dissolving Powder

For small ponds and water gardens. Reapply every 2-3 weeks.



Muck Puck Tablets

For small or medium ponds by docks or swimming areas. Reapply every 2-3 weeks.



Muck Blocks

For medium ponds, large ponds, or feeder streams. Reapply every 30 days.



Combine Pond Probiotics with a Kasco aeration method for maximized water quality results.

BEFORE

AFTER



KASCO DE-ICERS

THE #1 Selling De-icer in the World



DE-ICERS

Protect Your Waterfront from Ice Damage

By pulling warmer water up, Kasco De-icers create an opening at the water's surface, keeping boats and docks safe from damaging ice buildup.

Kasco De-icers create more thrust than any other product on the market. More thrust means more open water to better protect your property.

- Offered as 220V
- Includes (2) 6m suspension ropes
- Mount with ropes or Universal or Industrial Mount Kits
- Optional control panels for automatic time and temperature settings



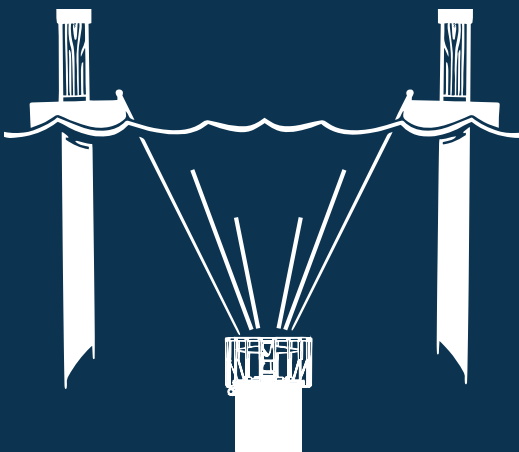
1/2, 3/4, & 1HP
Available



3-Year Warranty



CE Marked



AVAILABLE TO SPECIALTY DISTRIBUTION. CONTACT KASCO FOR DETAILS.

WARRANTY PERIODS

EJ SERIES FOUNTAINS

- All HP: 2-years

EVFX FOUNTAINS

- All HP: 2-years

SURFACE AERATORS

- All HP: 2-years

WATERGLOW LIGHTING

- Halogen: 2-years
- Composite LED: 2-years

AQUATICLEAR™ CIRCULATORS

- All HP: 2-years

ROBUST-AIRE™

- Compressor: 2-years
- Tubing: 15-years
- Diffuser: Lifetime
- Cabinet: Lifetime

“R” (REPLACEMENT) UNITS

- All HP: 2-years

WARRANTY

STANDARD WARRANTY:

Kasco Marine, Inc. warrants products to be free from defects in material or workmanship under normal use and service. This warranty excludes damage to the equipment from improper handling or installation as well as damage caused by environmental factors (examples include but are not limited to: cuts in or crushing of the power cord, damage to mooring lines and ropes, foreign objects causing damage to props or motor shafts, and improper power feeds). The Kasco Marine, Inc. obligation under this warranty is limited to replacing or repairing, free of charge, any defective part within the warranty period.

All units sent back to the factory or authorized repair center should be accompanied by the repair form, found at kascomarine.com. Customer is responsible to pay shipping charges.

WARRANTY IS VOID IF:

1. The product is not maintained according to the maintenance recommendations supplied in owner's manual.
2. The product is returned for repair without the power cord (cuts in the power cord and field splices are not covered under warranty).
3. The unit, control box, or power cord are altered in any way from original shipment.
4. The product is not used with a GFCI-protected outlet, or not used with the supplied GFCI control panel.
5. The product is damaged by unauthorized tampering.
6. The sacrificial anode shows significant deterioration.

PRODUCT RETURN & REPAIR

NEW OR UNUSED PRODUCT RETURN:

If an item has not entered the water, it can be returned to Kasco:

1. Contact Kasco to receive an RMA number and RMA form.
2. Package the item(s) adequately (original packaging preferred) and return to Kasco with completed RMA form and RMA number on the shipping label or written on the box.

IMPORTANT:

- 10% restocking fee will be applied to all returns.
- An item will not be accepted for return if it has been in the water.
- Kasco will not reimburse for product that was damaged during shipment.
- Only new, clean and unused items may be returned for credit.
- Items may not be returned after 6 months from the time of purchase.

REPAIR:

Equipment can be shipped to Kasco or an authorized service center for a repair estimate. Contact us if you'd like to find an authorized repair center near you.

Kasco aims to provide a free cost estimate within 48 hours. After customer approval, the repair can be made in just a few days.

- Please include upper pump housing or wire cage for aerators and de-icers.
- Kasco is not responsible for shipping damage from customer to Kasco.
- Do not send floats. Kasco will charge \$90 for float disassembly and cleaning.
- It is the responsibility of the customer to ship and pay freight to Kasco.

SHIPPING

DAMAGED SHIPMENTS:

Please thoroughly inspect incoming shipments prior to accepting. Once a shipment is accepted by the receiver, it is difficult, if not impossible, to get the freight company to pay for damage. If boxes have been damaged, opened, repackaged, a pallet re-strapped, etc., it is best to simply refuse the delivery. This ensures the carrier cannot blame the receiver for the damage and that the shipment gets returned to Kasco. In the unfortunate event of damage or shortage to your order, please notify customer service and make a note on any shipping-related documents. Photos of the packaging and product will also help our customer service team expedite your claim and find the fastest resolution.

FREIGHT QUOTES:

Freight quotes should be viewed as estimates and may vary depending on exact date of shipment. Please email freight quotes to sales@kascomarine.com and include the below:

- Complete delivery address
- Method of Transportation - Sea Freight, Air Freight or Ground Freight
- Delivery notification contact info

NOTE: Some addresses are extended delivery areas and additional charges may apply.

DISTRIBUTOR TOOLS



KASCO WEBSITE



DISTRIBUTOR PORTAL



ONLINE TRAINING



QUALIFIED LEAD ROUTING



Kasco[®]

MOVING WATER FORWARD, SINCE 1968

kascomarine.com | 715.262.4488 | sales@kascomarine.com

800 Deere Road, Prescott, WI U.S.A. 54021

© 2023 Kasco Marine, Inc.