



MOVING WATER FORWARD, SINCE 1968

2023 PRICE CATALOG

60HZ RETAIL

kascomarine.com

Fountains | Lighting | Surface Aerators | Diffused Aeration | Circulators | Pond Probiotics | De-icers | Mixers

MOVING WATER FORWARD

At Kasco, we help people realize the full potential of the water in their world. Our products are the most efficient and effective solutions for improving, protecting, and beautifying water.

UNMATCHED CUSTOMER SERVICE

Superior customer service is in our DNA. From design and development to delivery and support, we provide an unwavering commitment to our customers.



FROM THE FACTORY

At Kasco, we believe it all begins and ends with our customers. This value drives our ongoing commitment to continuous improvement as we strive to better support our distributors, installers, and end users.

As many industries have been impacted by broad supply chain challenges, we have minimized those effects for our customers by investing in a major expansion of our warehouse and increased inventory levels of our raw materials. This proved effective this past year, as we experienced very limited interruption to supply. We will sustain this focus on inventory and warehouse operations as we head into another year of global disruptions.

In order to meet the market's increasing demand for products, we also expanded our manufacturing capacity with the addition of a larger shop floor and another production line. This allowed us to operate with the industry-leading turnaround time that you expect from Kasco, even during our busiest months. This increased capacity will support future growth as well.

In addition to improving our operations, we believe in offering innovative products that better solve our customers' water challenges. This past year, that included the launch of the innovative, AquatiClear™ product line, which provides waterfront owners a cleaner, more enjoyable waterfront with less hassle than ever before, thanks to the patent-pending, clog-resistant design. We also launched our new, larger diffused aeration systems. These larger cabinets provide more aeration with less maintenance, keeping compressors running, longer thanks to lower operating temperatures and less exposure to dust with our patent-pending Air-Guard Technology.

We are grateful for our talented and committed team across the organization and for the opportunity to serve you, our valued customers and partners. We look forward to a great 2023 together!

*Sincerely,
Your Partners at Kasco*



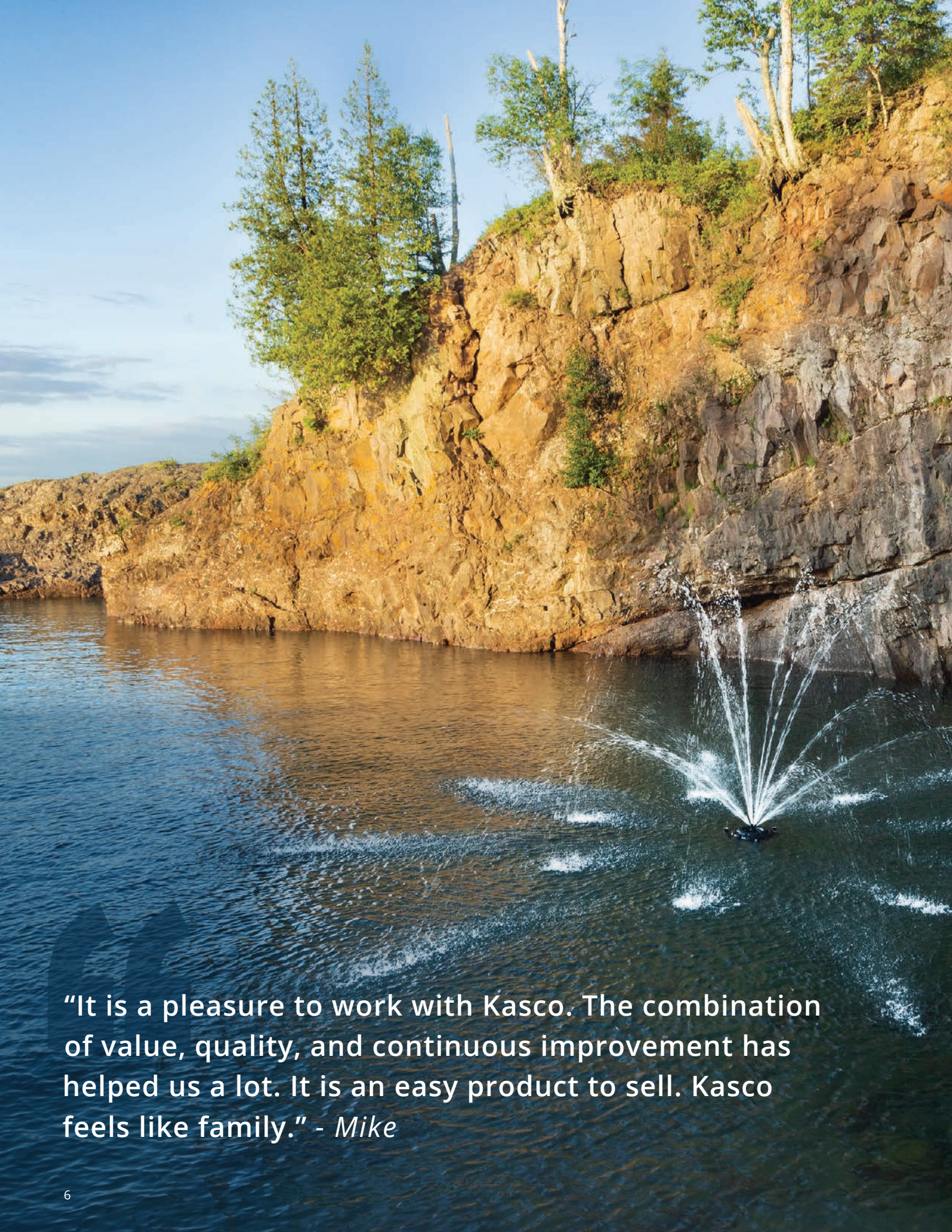
In 2022, our footprint reached 100,000 ft² by adding more space for production, inventory, shipping, and office operations.



Our entire team has risen to the unique supply and inventory challenges, allowing us to provide what our customers need.

We hold ourselves to the highest standards, never wavering on the quality of our materials or production processes.





"It is a pleasure to work with Kasco. The combination of value, quality, and continuous improvement has helped us a lot. It is an easy product to sell. Kasco feels like family." - *Mike*



TABLE OF CONTENTS

Moving Water Forward.....	2
Why Kasco.....	3
A Note From the Factory	4
Table of Contents.....	7
Fountains	
J Series	8
J Series Premium Nozzles.....	16
VFX Series	18
WaterGlow Lighting	22
Lighting Selection Guide	23
Composite LED	24
Stainless Steel LED	26
RGB LED	28
RGBW LED	30
AquatiClear™ Circulators	32
Surface Aerators	36
Robust-Aire™ Diffused Aeration Systems	42
Teich-Aire Compressors.....	49
Solar.....	50
Pond Probiotics (Macro-Zyme™).....	52
Accessories	54
Unit Mounting Options.....	55
Control Panels	56
Extras.....	57
De-icers	58
CertiSafe™ Tank Mixers.....	60
Warranty	62
MAP, Product Return, Repair & Shipping.....	63
Distributor Tools	63



J SERIES

Elegant Fountain Displays


Kasco J Series Fountains offer dramatic, aesthetically pleasing displays at the best value on the market. Designed with both beauty and function in mind, each package includes multiple twist-and-lock nozzles at no extra charge, allowing you to choose patterns ranging from attention-demanding geysers to elegant 3-tier displays.

Packages include motor unit, 1-piece float, bottom screen, mooring ropes, power cord, display nozzles, and control panel with human-rated GFCI protection.

Available in 3/4 - 7.5HP sizes and single and three phase options to fit virtually any application.

Complete packages are ETL Listed to UL and CSA standards for safety.





Includes
5 Nozzles



Impressive
Heights & Widths



Easily Change
Patterns



Snap-on
Lights Available



3/4HP & 1HP

J SERIES FOUNTAINS

- Premium Nozzles available (purchased separately)
- 120V and 208-240V, single phase
- 3/4HP operates in as little as 17.5 in. of water
- 1HP operates in as little as 19 in. of water
- Control panels feature human-rated GFCI protection



5 Patterns
Included



Premium Nozzles
Available



Optional Lighting
Packages



2-Year Warranty



ETL Listed to UL &
CSA Standards

3/4HP Packages

CORD LENGTH	50 FT	100 FT	150 FT	200 FT	250 FT	300 FT	400 FT	500 FT
120V PACKAGES								
PART #	3400JF050	3400JF100	3400JF150	3400JF200	-	-	-	-
MSRP	\$1,957	\$2,135	\$2,691	\$2,940	-	-	-	-
208-240V PACKAGES								
PART #	3400HJF050	3400HJF100	3400HJF150	3400HJF200	3400HJF250	3400HJF300	3400HJF400	3400HJF500
MSRP	\$3,373	\$3,503	\$4,121	\$4,317	\$4,405	\$4,507	\$4,979	Inquire

1HP Packages

CORD LENGTH	50 FT	100 FT	150 FT	200 FT	250 FT	300 FT	400 FT	500 FT
120V PACKAGES								
PART #	4400JF050	4400JF100	4400JF150	4400JF200	-	-	-	-
MSRP	\$2,371	\$2,997	\$3,655	\$4,011	-	-	-	-
208-240V PACKAGES								
PART #	4400HJF050	4400HJF100	4400HJF150	4400HJF200	4400HJF250	4400HJF300	4400HJF400	4400HJF500
MSRP	\$3,901	\$4,036	\$4,715	\$4,930	\$5,147	\$5,254	\$5,366	Inquire

Product Notes:

1. Prices in bold have quick disconnect installed on power cords.
2. 3/4 and 1HP, 120V options include C-25 control panel.
3. 3/4 and 1HP, 208-240V options include C-85 control panel.
4. Control panels allow timing and lights to be managed from shore.



CYPRESS

3/4HP - 7 FT. H X 17 FT. W

1HP - 9 FT. H X 28 FT. W



LINDEN

3/4HP - 9 FT. H X 29 FT. W

1HP - 12 FT. H X 31 FT. W



WILLOW

3/4HP - 6.5 FT. H X 21 FT. W

1HP - 9 FT. H X 31 FT. W



SEQUOIA

3/4HP - 13 FT. H X 8 FT. W

1HP - 18 FT. H X 11 FT. W



BIRCH

3/4HP - 7 FT. H X 5 FT. W

1HP - 11 FT. H X 8 FT. W

2HP & 3HP

J SERIES FOUNTAINS

- Premium Nozzles available (purchased separately)
- 208-240V, single and three phase options
- 2HP operates in as little as 20 in. of water
- 3HP operates in as little as 24 in. of water
- Control panels feature human-rated GFCI protection



5 Patterns
Included



Premium Nozzles
Available



Optional Lighting
Packages



3-Year Warranty - 2HP Units*
5-Year Warranty - 3HP Units



ETL Listed to UL &
CSA Standards

2HP Packages

CORD LENGTH	50 FT	100 FT	150 FT	200 FT	250 FT	300 FT	400 FT	500 FT
SINGLE PHASE								
PART #	8400JF050	8400JF100	8400JF150	8400JF200	8400JF250	8400JF300	8400JF400	8400JF500
MSRP	\$5,651	\$6,059	\$6,182	\$6,349	\$6,545	\$7,452	\$10,412	Inquire
THREE PHASE								
PART #	2.3JF050	2.3JF100	2.3JF150	2.3JF200	2.3JF250	2.3JF300	2.3JF400	2.3JF500
MSRP	\$8,974	\$9,220	\$9,524	\$9,790	\$10,412	\$10,905	\$12,559	Inquire

3HP Packages

CORD LENGTH	50 FT	100 FT	150 FT	200 FT	250 FT	300 FT	400 FT	500 FT
SINGLE PHASE								
PART #	3.1JF050	3.1JF100	3.1JF150	3.1JF200	3.1JF250	3.1JF300	3.1JF400	3.1JF500
MSRP	\$6,550	\$7,004	\$7,170	\$7,840	\$8,392	\$8,730	\$11,282	Inquire
THREE PHASE								
PART #	3.3JF050	3.3JF100	3.3JF150	3.3JF200	3.3JF250	3.3JF300	3.3JF400	3.3JF500
MSRP	\$9,319	\$9,564	\$9,869	\$10,417	\$10,756	\$12,006	\$12,908	Inquire

* Extended warranty available on 2HP units.

Product Notes:

1. Prices in bold have quick disconnect installed on power cords.
2. 2HP, single phase options include C-85 control panel. 3HP, single phase options include C-95 control panel.
3. 2 and 3HP, three phase options include CF-3235 control panel.
4. Control panels allow timing and lights to be managed from shore.
5. 460-480V, three phase options available for special order in approved locations only. Contact Kasco for details.



BALSAM

2HP - 14 FT. H X 32 FT. W
3HP - 19 FT. H X 34 FT. W



LINDEN

2HP - 15.5 FT. H X 38 FT. W
3HP - 20.5 FT. H X 38 FT. W



BIRCH

2HP - 11 FT. H X 10 FT. W
3HP - 16 FT. H X 12 FT. W



SPRUCE

2HP - 21 FT. H X 10 FT. W
3HP - 26 FT. H X 12 FT. W



REDWOOD

2HP - 22 FT. H X 6 FT. W
3HP - 27 FT. H X 6 FT. W

5HP & 7.5HP

J SERIES FOUNTAINS

- Premium Nozzles available (purchased separately)
- 208-240V, 5HP available as single and three phase
- 208-240V, 7.5HP available only as three phase
- 5HP operates in as little as 26 in. of water
- 7.5HP operates in as little as 28 in. of water
- One-piece, stainless steel hex bottom screen is easy to install and clean, and helps prevent clogging from debris
- Control panels feature human-rated GFCI protection



5 Patterns
Included



Premium Nozzles
Available



Optional Lighting
Packages



5-Year Warranty



ETL Listed to UL &
CSA Standards

5HP Packages

CORD LENGTH	100 FT	150 FT	200 FT	250 FT	300 FT	400 FT	500 FT
SINGLE PHASE							
PART #	5.1JF100	5.1JF150	5.1JF200	5.1JF250	5.1JF300	5.1JF400	5.1JF500
MSRP	\$8,195	\$9,154	\$9,868	\$11,204	\$13,382	\$14,477	Inquire
THREE PHASE							
PART #	5.3JF100	5.3JF150	5.3JF200	5.3JF250	5.3JF300	5.3JF400	5.3JF500
MSRP	\$10,258	\$10,902	\$11,654	\$12,063	\$14,752	\$16,053	Inquire

7.5HP Packages

CORD LENGTH	100 FT	150 FT	200 FT	250 FT	300 FT	400 FT	500 FT
THREE PHASE							
PART #	7.3JF100	7.3JF150	7.3JF200	7.3JF250	7.3JF300	7.3JF400	7.3JF500
MSRP	\$10,622	\$11,505	\$12,068	\$13,911	\$14,955	\$17,554	Inquire

Product Notes:

1. Prices in bold have quick disconnect installed on power cords.
2. 5HP, single phase units include C-95 control panel. 5HP, three phase units include CF-3235 control panel.
3. 7.5HP, three phase units include CF-3075 control panel.
4. Control panels allow timing and lights to be managed from shore.
5. 460-480V, three phase options available for special order in approved locations only. Contact Kasco for details.



BALSAM

5HP - 18 FT. H X 34 FT. W
7.5HP - 21 FT. H X 36 FT. W



LINDEN

5HP - 24.5 FT. H X 46 FT. W
7.5HP - 26 FT. H X 46 FT. W



BIRCH

5HP - 24 FT. H X 14 FT. W
7.5HP - 26 FT. H X 16 FT. W



SPRUCE

5HP - 31 FT. H X 12 FT. W
7.5HP - 34 FT. H X 12 FT. W



REDWOOD

5HP - 32 FT. H X 6 FT. W
7.5HP - 36 FT. H X 8 FT. W

PREMIUM NOZZLES

J SERIES FOUNTAINS

Further define your J Series experience with a Premium Nozzle, now available for all HP sizes. Purchased separately, Kasco Premium Nozzles provide crisp and distinct streams of water for dramatic and attention-demanding displays.



Available for ALL
J Series Fountains



4 Pattern Choices for
3/4 & 1HP Units



6 Pattern Choices for
2, 3, 5 & 7.5HP Units



Simple Twist-and-Lock
Installation



Purchased
Separately



Fern - NEW!



Mighty Oak



Magnolia



Mahogany



Madrone



Palm

PATTERN	NEW - 3/4 & 1HP PART NUMBERS & DIMENSIONS (H x W) (FT.)				2, 3, 5 & 7.5HP PART NUMBERS & DIMENSIONS (H x W) (FT.)					
	PART #	3/4HP - NEW	1HP - NEW	MSRP	PART #	2HP	3HP	5HP	7.5HP	MSRP
Mighty Oak	431335K	10 x 24	13 X 34	\$140	841335K	14.5 x 40	19.5 x 51	24.5 x 58	27 x 60	\$295
Magnolia	431325K	9 x 29	11.5 x 37	\$140	841325K	13.5 x 44	18 x 60	23.5 x 72	26 x 80	\$295
Mahogany	431345K	11.5 x 28	14 x 34	\$140	841345K	16 x 40	21 x 58	28 x 64	29 x 72	\$295
Madrone	431330K	11.5 x 28	14 x 35	\$140	841330K	15 x 43	20 x 59	24 x 70	26 x 75	\$295
Fern - NEW!	-	-	-	-	841315K	12 x 36	16 x 54	20 x 70	24 x 66	\$295
Palm	-	-	-	-	841320K	12 x 26	16 x 36	20.5 x 40	22 x 42	\$295



MIGHTY OAK



MAGNOLIA



MAHOGANY



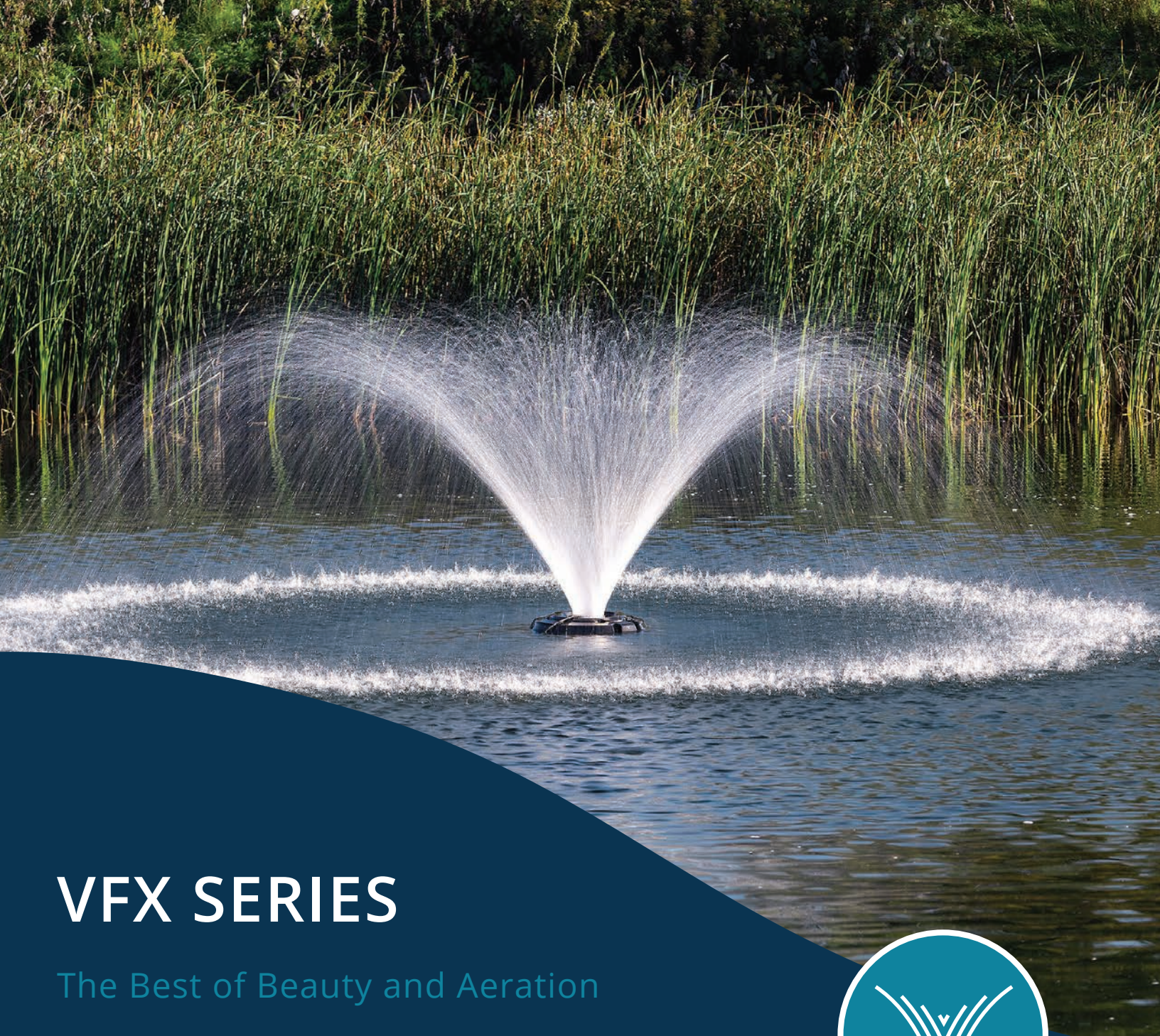
MADRONE



FERN - NEW!



PALM



VFX SERIES

The Best of Beauty and Aeration

Kasco VFX Series is the choice for an elegant display with superior aeration benefits. These high-flow units are efficient, easy to install and operate, and are ideal for many applications.

Packages include motor unit, float, bottom screen, mooring ropes, power cord, and control panel with human-rated GFCI protection.

Available in 1/2 - 5HP sizes and single and three phase options to fit virtually any application.

Complete packages are ETL Listed to UL and CSA standards.





Classic "V"
Shaped Pattern



Combines
Beauty & Aeration



Snap-on
Lights Available



1-Piece Float
For Easy Assembly



120V

VFX FOUNTAIN

- Single phase
- 1/2HP operates in as little as 15 in. of water
- 3/4HP operates in as little as 17.5 in. of water
- 1HP operates in as little as 19 in. of water
- 1-piece tapered float is easy to install and looks sleek at the surface
- Control panels feature human-rated GFCI protection



1/2, 3/4 & 1HP
Available



Classic "V"
Shaped Pattern



Optional Lighting
Packages



2-Year Warranty



ETL Listed to UL &
CSA Standards

HP	DISPLAY		CORD LENGTH	50 FT	100 FT	150 FT	200 FT
	H (FT)	W (FT)					
SINGLE PHASE PACKAGES							
1/2	5	15	PART #	2400VFX050	2400VFX100	2400VFX150	2400VFX200
			MSRP	\$1,629	\$1,799	\$2,340	\$2,582
3/4	5.5	21	PART #	3400VFX050	3400VFX100	3400VFX150	3400VFX200
			MSRP	\$1,725	\$1,896	\$2,448	\$2,697
1	8	26	PART #	4400VFX050	4400VFX100	4400VFX150	4400VFX200
			MSRP	\$2,049	\$2,641	\$3,318	\$3,702

- Product Notes:
1. Prices in bold have quick disconnect installed on power cords.
 2. 1/2-1HP, single phase units include C-25 control panel.
 3. Control panels allow timing and lights to be managed from shore.

Enjoy your VFX Fountain
at night with easy-to-
install lighting systems.

208-240V

VFX FOUNTAIN

- Single and three phase options
- 3/4HP operates in as little as 17.5 in. of water
- 1HP operates in as little as 19 in. of water
- 2HP operates in as little as 20 in. of water
- 5HP operates in as little as 26 in. of water
- 1-piece tapered float is easy to install and looks sleek at the surface
- Control panels feature human-rated GFCI protection



3/4, 1, 2 & 5HP
Available



Classic "V"
Shaped Pattern



Optional Lighting
Packages



2-Year Warranty - 3/4 & 1HP Units
3-Year Warranty - 2 & 5HP Units*



ETL Listed to UL &
CSA Standards

HP	DISPLAY		CORD LENGTH	50 FT	100 FT	150 FT	200 FT	250 FT	300 FT	400 FT	500 FT
	H (FT)	W (FT)									
SINGLE PHASE PACKAGES											
3/4	5.5	21	PART #	3400HVFX050	3400HVFX100	3400HVFX150	3400HVFX200	3400HVFX250	3400HVFX300	3400HVFX400	3400HVFX500
			MSRP	\$3,139	\$3,271	\$3,885	\$4,084	\$4,177	\$4,277	\$4,743	Inquire
1	8	26	PART #	4400HVFX050	4400HVFX100	4400HVFX150	4400HVFX200	4400HVFX250	4400HVFX300	4400HVFX400	4400HVFX500
			MSRP	\$3,515	\$3,640	\$4,295	\$4,507	\$4,723	\$4,832	\$5,349	Inquire
2	8	32	PART #	8400VFX050	8400VFX100	8400VFX150	8400VFX200	8400VFX250	8400VFX300	8400VFX400	8400VFX500
			MSRP	\$5,435	\$6,008	\$6,164	\$6,329	\$6,527	\$7,594	\$11,212	Inquire
5	10	34	PART #	-	5.1VFX100	5.1VFX150	5.1VFX200	5.1VFX250	5.1VFX300	5.1VFX400	5.1VFX500
			MSRP	-	\$7,719	\$8,510	\$9,121	\$10,203	\$12,620	\$15,207	Inquire
THREE PHASE PACKAGES											
2	8	32	PART #	2.3VFX050	2.3VFX100	2.3VFX150	2.3VFX200	2.3VFX250	2.3VFX300	2.3VFX400	2.3VFX500
			MSRP	\$8,753	\$8,944	\$9,302	\$9,488	\$10,089	\$10,585	\$13,027	Inquire
5	10	34	PART #	-	5.3VFX100	5.3VFX150	5.3VFX200	5.3VFX250	5.3VFX300	5.3VFX400	5.3VFX500
			MSRP	-	\$10,269	\$10,922	\$11,860	\$12,552	\$15,442	\$16,633	Inquire

* Extended warranty available on 2 & 5HP units.

Product Notes:

1. Prices in bold have quick disconnect installed on power cords.
2. 3/4-2HP, single phase units include C-85 control panel; single phase, 5HP units include C-95 control panel.
3. 2 and 5HP, three phase units include CF-3235 control panel.
4. Control panels allow timing and lights to be managed from shore.
5. 460-480V, three phase option available for special order in approved locations only. Contact Kasco for details.



WATERGLOW LIGHTING

Add Beauty to Your Evening Displays

Kasco WaterGlow Lighting dramatically illuminates your fountain or surface aerator pattern during the evening hours. Available in composite or stainless steel housings and with several color options, these versatile LED lights are a perfect addition to your display.

RGBW LED SYSTEMS with ultra-vibrant color displays now available! See pages 30-31 for details.

Easy-to-install, snap-on light clips included with RGB LED, Composite LED, and Stainless Steel LED systems.

Multiple sizes and styles available to suit countless applications.



LIGHTING SELECTION GUIDE

Below are the lighting systems recommended for each unit size (HP). Background light, pattern, and fixture angle can affect visual experience. Using these recommendations will help ensure your pattern is richly illuminated to the fullest extent possible.



LIGHTING SYSTEM			RECOMMENDED UNIT SIZE (HP)						
LIGHT SYSTEM	MODEL	# OF FIXTURES	1/2	3/4	1	2	3	5	7.5
Composite LED	LED3C11	3	✓	✓	✓				
Composite LED	LED6C11	6				✓	✓	✓	
Stainless Steel LED	LED3S19	3				✓	✓		
Stainless Steel LED	LED6S19	6					✓	✓	✓
RGB LED	RGB3C5	3	✓	✓	✓				
RGB LED	RGB6C5	6				✓	✓		
RGBW	RGBW2SW40 RGBW2SL40	2				✓			
RGBW	RGBW3SW40 RGBW3SL40	3				✓	✓	✓	✓
RGBW	RGBW4SW40 RGBW4SL40	4						✓	✓



COMPOSITE LED

WATERGLOW LIGHTING

These LED Lighting Systems provide classic elegance and include 4 colored lenses to create the perfect illuminated setting.

- Includes light fixtures, brackets, snap-on clips, power cord, waterproof disconnect caps, colored lenses, and lens caps
- 3- and 6-fixture kits available in multiple power cord lengths
- Runs on 120 VAC power



Displays White and Includes Red, Green, Blue, & Amber Lenses



Durable Composite Fixtures for Watertight Operation



11 Watts and 910 Lumens Per Fixture



2-Year Warranty

CORD LENGTH	50 FT	100 FT	150 FT	200 FT	250 FT	300 FT	400 FT	500 FT
3-FIXTURE KITS (RECOMMENDED FOR 1/2 - 1HP UNITS)								
PART #	LED3C11-050	LED3C11-100	LED3C11-150	LED3C11-200	LED3C11-250	LED3C11-300	LED3C11-400	LED3C11-500
MSRP	\$923	\$1,019	\$1,105	\$1,202	\$1,330	\$1,415	\$1,556	\$2,134
6-FIXTURE KITS (RECOMMENDED FOR 2 - 5HP UNITS)								
PART #	LED6C11-050	LED6C11-100	LED6C11-150	LED6C11-200	LED6C11-250	LED6C11-300	LED6C11-400	LED6C11-500
MSRP	\$1,844	\$1,933	\$2,030	\$2,127	\$2,236	\$2,347	\$2,523	\$2,871

Product Notes:

1. Waterproof caps allow customers to leave the main power cord in the water when fixtures are pulled for maintenance or storage.
2. Available for non-Kasco units. Contact Kasco for details.



 Kasco Composite LED lights look great on 1/2 - 5HP fountains.



Snap-on Clips for
Easy Installation



Vibrant Color
From All Angles



Perfect For
Fountains or
Surface Aerators



Power cord
Lengths up to
500 ft.



STAINLESS STEEL LED

WATERGLOW LIGHTING

Kasco Stainless Steel Lighting Systems ensure a radiant display long into the evening hours and offer 4 colored lenses.

- Includes light fixtures, brackets, snap-on light clips, power cord, colored lenses, and lens caps
- 3- and 6-fixture kits available in multiple power cord lengths
- Runs on 120 VAC power



Displays White and Includes Red, Green, Blue & Amber Lenses



Durable Stainless Steel Fixtures for Watertight Operation



19 Watts and 1,700 Lumens Per Fixture



3-Year Warranty



UL / CSA Listed

CORD LENGTH	50 FT	100 FT	150 FT	200 FT	250 FT	300 FT	400 FT	500 FT
3-FIXTURE KITS (RECOMMENDED FOR 2 & 3HP UNITS)								
PART #	LED3S19-050	LED3S19-100	LED3S19-150	LED3S19-200	LED3S19-250	LED3S19-300	LED3S19-400	LED3S19-500
MSRP	\$1,985	\$2,064	\$2,150	\$2,235	\$2,314	\$2,418	\$2,606	\$2,887
6-FIXTURE KITS (RECOMMENDED FOR 3 - 7.5HP UNITS)								
PART #	LED6S19-050	LED6S19-100	LED6S19-150	LED6S19-200	LED6S19-250	LED6S19-300	LED6S19-400	LED6S19-500
MSRP	\$3,599	\$3,691	\$3,786	\$3,881	\$3,987	\$4,096	\$4,269	\$4,397

Product Notes:

1. Fixtures are daisy-chained together for easy installation.
2. All S19 kits include quick disconnect on main power cord.
3. Available for non-Kasco units. Contact Kasco for details.



 Kasco Stainless Steel LED lights look great on 2 - 7.5HP fountains.



Snap-on Clips for
Easy Installation



Vibrant Color
From All Angles



Perfect for
Fountains or
Surface Aerators



Power cord
Lengths up
to 500 ft.



RGB LED

WATERGLOW LIGHTING

Kasco RGB LED Lighting Systems add vibrancy to any evening water display with exceptional color options, rhythmic patterns, and musical capabilities.

- Packages include light fixtures, brackets, snap-on clips, power cord, waterproof disconnect caps, remote control, and RGB control panel
- 3- and 6-fixture kits available in multiple power cord lengths
- Runs on 24 VDC power



9 Vibrant
Color Choices



Durable Composite Housings
for Watertight Operation



Power Cord Lengths
up to 400 ft.



5 Watts Per Fixture



2-Year Warranty

CORD LENGTH	50 FT	100 FT	150 FT	200 FT	250 FT	300 FT	400 FT
3-FIXTURE KITS (RECOMMENDED FOR 1/2 - 1HP UNITS)							
PART #	RGB3C5-050	RGB3C5-100	RGB3C5-150	RGB3C5-200	RGB3C5-250	RGB3C5-300	RGB3C5-400
MSRP	\$1,405	\$1,605	\$1,805	\$2,001	\$2,216	\$2,859	\$3,710
6-FIXTURE KITS (RECOMMENDED FOR 2 & 3HP UNITS)							
PART #	RGB6C5-050	RGB6C5-100	RGB6C5-150	RGB6C5-200	RGB6C5-250	RGB6C5-300	RGB6C5-400
MSRP	\$2,532	\$2,974	\$3,416	\$3,858	\$4,315	\$5,778	\$7,095

- Product Notes:
1. Waterproof caps allow customers to leave the main power cord in the water when fixtures are pulled for maintenance or storage.
 2. 6-fixture kits ship with 2 power cords.
 3. Available for non-Kasco units. Contact Kasco for details.





Snap-on Clips for
Easy Installation



Vibrant Color
From All Angles



Great for
Fountains &
Surface Aerators



Set to Music
in Rhythmic
Patterns



RGBW LED

WATERGLOW LIGHTING

Kasco's RGBW LED WaterGlow Lighting Systems are controlled with Wi-Fi or a push-button controller and add rich color to any evening display. Featuring 36 pre-programmed settings and DMX-addressable fixtures, these kits provide a customizable, inspiring visual display.

- Includes fixtures, mounting brackets, power cord and submersible quick disconnect, protective cord sleeve, and control panel
- 2-, 3-, and 4-fixture kits available in multiple power cord lengths
- Runs on 120 VAC power



Perfect for Fountains
or Surface Aerators



Durable Stainless Steel Fixtures
for Watertight Operation



40 Watts and 2,376
Lumens Per Fixture



5-Year Warranty



UL / CSA Listed

Wi-Fi Enabled Packages

Use the touch pad inside the panel or download the app on your mobile device to control color, sequencing patterns, and power.


Push-Button Packages

Use the push-button controller inside the panel or included short-range remote to cycle through color, sequencing patterns, and power.

CONTROL OPTION	MODEL	CORD LENGTH (FT)						
		100 FT	150 FT	200 FT	250 FT	300 FT	400 FT	500 FT
2-FIXTURE KITS (RECOMMENDED FOR 2HP UNITS)								
Wi-Fi	RGBW2SW40	\$5,890	\$6,096	\$6,273	\$6,469	\$6,666	\$7,058	\$7,451
Push-Button	RGBW2SL40	\$5,890	\$6,096	\$6,273	\$6,469	\$6,666	\$7,058	\$7,451
3-FIXTURE KITS (RECOMMENDED FOR 2 - 7.5HP UNITS)								
Wi-Fi	RGBW3SW40	\$7,150	\$7,357	\$7,534	\$7,730	\$7,926	\$8,319	\$8,712
Push-Button	RGBW3SL40	\$7,150	\$7,357	\$7,534	\$7,730	\$7,926	\$8,319	\$8,712
4-FIXTURE KITS (RECOMMENDED FOR 5 & 7.5HP UNITS)								
Wi-Fi	RGBW4SW40	\$8,503	\$8,709	\$8,886	\$9,083	\$9,279	\$10,523	\$11,130
Push-Button	RGBW4SL40	\$8,503	\$8,709	\$8,886	\$9,083	\$9,279	\$10,523	\$11,130

Product Notes:

1. Part # is the model combined with cord length (ex. RGBW2SW40-100).
2. Fixtures are daisy-chained together for easy installation.
3. Wireless remote in Push-Button Packages (SL models) includes batteries.
4. Wi-Fi models can operate long distances from power.



Each fixture uses 8 LED arrays producing 4 narrow and 4 wide beams of light to fully illuminate even the largest multi-tiered patterns.



Fixtures are independently adjustable, allowing for vibrant lighting in any setting.



36 pre-programmed color settings ranging from static single colors to holiday themes.





AQUATICLEAR™

Clog-Resistant Waterfront Management

AquatiClear™ by Kasco is a clog-resistant circulator that keeps water near docks, canals, and shorelines free of floating debris and foul odors. Utilizing Clean Current Technology (patent pending), AquatiClear features a prop guard with smooth, rounded tines that allow debris to slip by instead of collect around the unit, meaning longer continuous operation and less maintenance.



Packages include motor unit and power cord. Mounting options and control panel available.

Crown-like prop guard with smooth, rounded tines decreases clogging from floating algae and debris.

Versatile mounting options allow AquatiClear to direct the flow of water to address specific areas.

Clears Shorelines
of Floating Debris



Debris Slips by
Instead of Clogging



Less Clogging
Reduces Maintenance



Kasco AquatiClear
Circulators provide a
strong, directional flow of
water to clean and clear
waterfront property.



BEFORE



AFTER

AQUATICLEAR™

CLOG-RESISTANT CIRCULATOR

- 120V and 208-240V, single phase options
- Optional control panels include human-rated GFCI protection
- Unit only, Horizontal Float Kit, and mount options available
- Universal Mount Kit packages include Simple Swivel bracket (patent pending) that allows for easy rotation of the unit to direct flow of water
- **NEW** Shallow Water Install Kit allows AquatiClear to be installed in shallower water without creating an audible vortex, or suction sound. Purchased separately.



1/2, 3/4 & 1HP
Available



NEW 75 ft. Power Cord
on 1HP, 120V Units



Clean Current Technology
(patent pending) Reduces Clogs



2-Year Warranty



ETL Listed to UL
& CSA Standards

HP	VOLT (V)	MODEL	CORD LENGTH								
			25 FT	50 FT	NEW 75 FT	100 FT	150 FT	200 FT	250FT	300 FT	400 FT
UNIT ONLY PACKAGES - "C" (NO MOUNT)											
1/2	120	2400C	\$1,005	\$1,041	-	\$1,211	\$1,751	\$1,992	-	-	-
3/4	120	3400C	\$1,088	\$1,130	-	\$1,285	\$1,875	\$2,096	-	-	-
3/4	208-240	3400HC	-	\$1,176	-	\$1,308	\$1,914	\$2,107	\$2,254	\$2,351	\$2,824
1	120	4400C	-	\$1,282	\$1,388	\$1,792	\$2,466	\$2,790	-	-	-
1	208-240	4400HC	-	\$1,328	-	\$1,454	\$2,103	\$2,305	\$2,597	\$2,704	\$2,984
HORIZONTAL FLOAT PACKAGES - "CFM"											
1/2	120	2400CFM	\$1,500	\$1,536	-	\$1,706	\$2,246	\$2,487	-	-	-
3/4	120	3400CFM	\$1,583	\$1,625	-	\$1,780	\$2,370	\$2,591	-	-	-
3/4	208-240	3400HCFM	-	\$1,671	-	\$1,803	\$2,409	\$2,602	\$2,749	\$2,846	\$3,319
1	120	4400CFM	-	\$1,777	\$1,883	\$2,287	\$2,961	\$3,285	-	-	-
1	208-240	4400HCFM	-	\$1,823	-	\$1,949	\$2,598	\$2,800	\$3,092	\$3,199	\$3,479
UNIVERSAL MOUNT PACKAGES - "CDM" (CUSTOMER MUST SUPPLY PIPE)											
1/2	120	2400CDM	\$1,370	\$1,406	-	\$1,576	\$2,116	\$2,357	-	-	-
3/4	120	3400CDM	\$1,453	\$1,495	-	\$1,650	\$2,240	\$2,461	-	-	-
3/4	208-240	3400HCDM	-	\$1,541	-	\$1,673	\$2,279	\$2,472	\$2,619	\$2,716	\$3,189
1	120	4400CDM	-	\$1,647	\$1,753	\$2,157	\$2,831	\$3,155	-	-	-
1	208-240	4400HCDM	-	\$1,693	-	\$1,819	\$2,468	\$2,670	\$2,962	\$3,069	\$3,349

Product Notes:

1. Prices in bold have quick disconnect installed on power cords.
2. Part # is the model combined with cord length (ex. 3400CDM150).
3. Optional control panel allows timing to be managed from shore. See page 56 for details.
4. Without the Shallow Water Install kit, Kasco recommends installing AquatiClear more than 2 ft. below the surface.

CLEAN CURRENT TECHNOLOGY



Revolutionary crown-like prop guard prevents weeds, algae, and other floating debris from clogging. AquatiClear is allowed to run continuously, creating clean and beautiful waterfronts.

POWERFUL MIXING



Using a 3/4HP unit and in just 30 minutes, dye is completely mixed throughout this 6 ft. deep, 800,000 gallon pond.

BEFORE MIXING



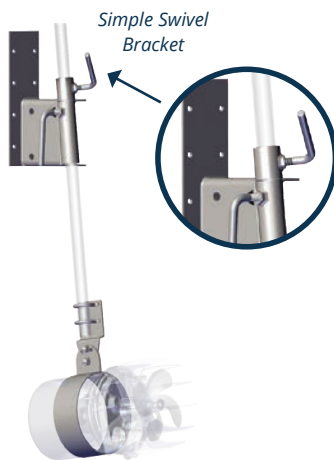
AFTER MIXING



Mounting Options

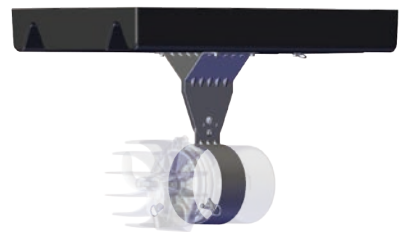
Universal Mount

Mount to docks or similar structures and adjust angle and depth. Adjust rotation with the Simple Swivel bracket (patent pending). Mount includes lifetime warranty.



Horizontal Float

Secure to the shore with three ropes and tie-down loops. Three angles of orientation directs flow to a desired area. Carries a 3-year warranty.



NEW Shallow Water Install Kit

The Shallow Water Install Kit eliminates the vortex suction sound, known as ventilation, that can sometimes occur when units are installed close to the surface. This means AquatiClear can be installed in shallower water without disrupting the lake bottom or creating a loud sound. These kits are purchased separately (see page 57 for details).





SURFACE AERATORS

High Oxygen Transfer at Extreme Value

Kasco Surface Aerators push high volumes of water into the air. This process increases the overall health of your water and keeps it thoroughly mixed. Introducing oxygen and water movement breaks up stratification, eliminates odor, discourages algae growth, and promotes a healthy aquatic environment.

Proven aeration performance for continuous, supplemental, or emergency use in depths less than 8 ft.

Available in 1/2 - 5HP, single or three phase options to fit a variety of applications.

Packages that include control panels are ETL Listed to UL and CSA standards.





Great for
Backyard Ponds,
Fish Farms, and More



For Continuous and
Supplemental Use



Pair with
WaterGlow™
Lighting Kit



Ideal in Depths
Less than 8 ft.



SINGLE PHASE

SURFACE AERATOR

- 120V and 208 - 240V options
- 1/2HP operates in as little as 15 in. of water
- 3/4HP operates in as little as 17.5 in. of water
- 1HP operates in as little as 19 in. of water
- Optional control panels feature human - rated GFCI protection



1/2, 3/4, 1, 2, 3,
& 5HP Available



Optional Lighting
Packages



NEW 75 ft. Power Cord
on 1HP, 120V Units



2-Year Warranty - 1/2, 3/4, & 1HP
3-Year Warranty - 2, 3, & 5HP*



ETL Listed to UL
& CSA Standards

120V Packages (Control Panel Sold Separately)

HP	MODEL	25 FT	50 FT	NEW 75 FT	100 FT	150 FT	200 FT
1/2	2400A	\$905	\$941	-	\$1,111	\$1,651	\$1,892
	2400AF	-	\$1,203	-	\$1,373	\$1,914	\$2,156
	2400AF (BTM SCR)	-	\$1,445	-	\$1,615	\$2,156	\$2,398
3/4	3400A	\$988	\$1,030	-	\$1,185	\$1,775	\$1,996
	3400AF	-	\$1,286	-	\$1,463	\$2,016	\$2,265
	3400AF (BTM SCR)	-	\$1,528	-	\$1,705	\$2,258	\$2,507
1	4400A	\$1,096	\$1,182	\$1,288	\$1,692	\$2,366	\$2,690
	4400AF	-	\$1,573	\$1,680	\$2,115	\$2,921	\$3,192
	4400AF (BTM SCR)	-	\$1,815	\$1,922	\$2,357	\$3,163	\$3,434

Product Notes:

1. Prices in bold have quick disconnect installed on power cords.
2. Part # is the model combined with cord length (ex. 2400AF050).
3. "A" models only include motor unit, "AF" models include floats, "BTM SCR" models include bottom screens.
4. Optional control panels available to allow timing and lights to be managed from shore. See page 56 for details.



Pair Kasco Surface Aerators with
Pond Probiotics for maximized
water quality results. See page
52 for details.

208-240V Packages (Control Panel Sold Separately)

HP	MODEL	CORD LENGTH							
		50 FT	100 FT	150 FT	200 FT	250 FT	300 FT	400 FT	500 FT
3/4	3400HA	\$1,076	\$1,208	\$1,814	\$2,007	\$2,154	\$2,251	\$2,724	Inquire
	3400HAF	\$1,345	\$1,478	\$2,083	\$2,278	\$2,418	\$2,515	\$2,984	Inquire
	3400HAF (BTM SCR)	\$1,587	\$1,720	\$2,325	\$2,520	\$2,660	\$2,757	\$3,226	Inquire
1	4400HA	\$1,228	\$1,354	\$2,003	\$2,205	\$2,497	\$2,604	\$2,884	Inquire
	4400HAF	\$1,593	\$1,718	\$2,360	\$2,571	\$2,785	\$2,893	\$2,985	Inquire
	4400HAF (BTM SCR)	\$1,835	\$1,960	\$2,602	\$2,813	\$3,027	\$3,135	\$3,227	Inquire
2	8400A	\$2,060	\$2,556	\$2,776	\$2,964	\$3,182	\$4,218	\$8,296	Inquire
	8400AF	\$3,362	\$3,918	\$4,118	\$4,318	\$4,519	\$5,476	\$9,208	Inquire
	8400AF (BTM SCR)	\$3,604	\$4,160	\$4,360	\$4,560	\$4,761	\$5,718	\$9,450	Inquire
3	3.1A	\$2,709	\$2,977	\$3,353	\$4,038	\$4,432	\$4,724	\$8,512	Inquire
	3.1AF	\$4,191	\$4,655	\$4,818	\$5,337	\$5,672	\$6,058	\$9,615	Inquire
	3.1AF (BTM SCR)	\$4,433	\$4,897	\$5,060	\$5,579	\$5,914	\$6,300	\$9,857	Inquire
5	5.1A	-	\$4,062	\$4,776	\$5,353	\$6,566	\$8,855	\$11,466	Inquire
	5.1AF	-	\$5,417	\$6,213	\$6,820	\$8,045	\$10,192	\$12,969	Inquire
	5.1AF (BTM SCR)	-	\$5,659	\$6,455	\$7,062	\$8,287	\$10,434	\$13,211	Inquire

Product Notes:

1. Same notes apply as previous page.



Pair Kasco Surface Aerators with a Kasco lighting package to illuminate the display in the evening. See pages 24 - 31 for details.

THREE PHASE

SURFACE AERATOR

- 208-240V
- Control panels have 30ma GFI protection
- "U" models (on next page) do not include control panels
- "U" models (on next page) are ETL Recognized to UL & CSA standards



2, 3 & 5HP
Available



Optional Lighting
Packages*



3-Year Warranty



ETL Listed to UL
& CSA Standards

208-240V Packages (CA-3235 Control Panel Included)

HP	MODEL	CORD LENGTH							
		50 FT	100 FT	150 FT	200 FT	250 FT	300 FT	400 FT	500 FT
2	2.3AF	\$6,941	\$7,126	\$7,496	\$7,709	\$8,267	\$8,643	\$10,538	Inquire
	2.3AF (BTM SCR)	\$7,183	\$7,368	\$7,738	\$7,951	\$8,509	\$8,885	\$10,780	Inquire
3	3.3AF	\$7,583	\$7,781	\$8,163	\$8,590	\$8,756	\$10,109	\$11,454	Inquire
	3.3AF (BTM SCR)	\$7,825	\$8,023	\$8,405	\$8,832	\$8,998	\$10,351	\$11,696	Inquire
5	5.3AF	-	\$8,307	\$8,911	\$9,615	\$10,297	\$13,039	\$13,995	Inquire
	5.3AF (BTM SCR)	-	\$8,549	\$9,153	\$9,857	\$10,539	\$13,281	\$14,237	Inquire

*If adding a light kit to a three phase unit, an additional control panel is needed. Contact Kasco for assistance.

Product Notes:

1. Prices in bold have quick disconnect installed on power cords.
2. Part # is the model combined with cord length (ex. 2.3AF050).
3. "AF" models include floats, "BTM SCR" models include bottom screens.
4. The above three phase models include 30ma trip-level protected control panel (CA-3235). If adding a light kit to a three phase unit, an additional control panel is needed to operate the lights. Contact Kasco for assistance.
5. Optional double-mechanical seal and stainless steel domed top available.
6. Three phase, 460V-480V available for special order in approved locations only. Contact Kasco for assistance.

208-240V Packages (Control Panel Not Included)

HP	MODEL	CORD LENGTH							
		50 FT	100 FT	150 FT	200 FT	250 FT	300 FT	400 FT	500 FT
2	U2.3A	\$2,725	\$2,916	\$3,290	\$3,506	\$4,053	\$4,447	\$6,526	Inquire
	U2.3AF	\$4,024	\$4,209	\$4,579	\$4,793	\$5,350	\$5,726	\$7,622	Inquire
	U2.3AF (BTM SCR)	\$4,266	\$4,451	\$4,821	\$5,035	\$5,592	\$5,968	\$7,864	Inquire
3	U3.3A	\$3,262	\$3,466	\$3,839	\$4,275	\$4,452	\$5,791	\$7,095	Inquire
	U3.3AF	\$4,662	\$4,860	\$5,242	\$5,669	\$5,835	\$7,189	\$8,533	Inquire
	U3.3AF (BTM SCR)	\$4,904	\$5,102	\$5,484	\$5,911	\$6,077	\$7,431	\$8,775	Inquire
5	U5.3A	-	\$4,024	\$4,626	\$5,544	\$6,004	\$8,736	\$10,025	Inquire
	U5.3AF	-	\$5,392	\$5,996	\$6,699	\$7,381	\$10,124	\$11,079	Inquire
	U5.3AF (BTM SCR)	-	\$5,634	\$6,238	\$6,941	\$7,623	\$10,366	\$11,321	Inquire

Product Notes:

1. Same notes apply as previous page.



Kasco Surface Aerators deliver up to 3.0 lbs. of O₂ per horsepower, per hour of operation, making them the most dependable and efficient units on the market.

NEW

Large and Medium
Systems with Aire-Guard
Cabinet Technology

(patent pending)



ROBUST-AIRE™ DIFFUSED AERATION

Move & Aerate Large Volumes of Water

Restore your water body's natural ecosystem by adding beneficial water mixing and movement with Robust-Aire™. A shore-mounted compressor pushes air through self-weighted lines to a diffuser at the bottom of the pond, lake, or tank. This induces oxygen transfer and beneficial mixing to prevent weed overgrowth, algae, unpleasant odors, fish kills, and other issues.



Packages include diffuser assembly, compressor, and compressor mounting option. Some models include SureSink Tubing.

NEW Large and Medium Cabinet Systems revolutionize air movement for superior cooling and less maintenance.

Dual-loop diffuser assembly includes built-in strain relief and is self-weighted to land right side up every time.

11-44% More
Efficient than
Competition
(3rd-party tested)



Longest-lasting,
Most Efficient
Diffuser



LIFETIME
Warranty on
Diffuser



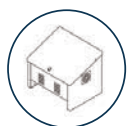
Most Efficient at
8 ft. or Deeper



ROBUST-AIRE™

STANDARD, DOUBLE-PISTON (DP) & XL SYSTEMS

- Includes 1 - 6 diffuser assemblies, compressor(s), and compressor mounting options, some models include tubing
- Ideal for small to mid-size ponds and lakes



Base Mount, Post Mount,
and No-Cabinet Option



Quiet
Operation



Diffuser Membrane
Will Not Clog



No Electricity in the Water
Makes it Safe for Swimming



LIFETIME Warranty - Diffuser & Cabinet
15-Year Warranty - Tubing
3-Year Warranty - Compressor

INCLUDES	NO CABINET <i>Includes mounting kit with cooling fan.</i>		POST MOUNT CABINET		BASE MOUNT CABINET		REMOTE MANIFOLD SYSTEMS <i>Allows remote installation of cabinet, compressors, and valves.</i>
	120V	208-240V	120V	208-240V	120V	208-240V	
STANDARD SYSTEMS (Uses 1/4 or 1/2HP compressors and 3/8 in. tubing.)							
SYSTEM 1 (1) Diffuser Assembly 100 ft. 3/8 in. Tubing (1) 1/4HP Compressor	RA1-NC	RAH1-NC	RA1-PM	RAH1-PM	RA1	RAH1	Add “-RM” to the end of any RA1 or RAH1 part # and increase cost by \$104.
	\$1,451		\$1,959		\$2,624		
SYSTEM 2 (2) Diffuser Assemblies 200 ft. 3/8 in. Tubing (1) 1/4HP Compressor	RA2-NC	RAH2-NC	RA2-PM	RAH2-PM	RA2	RAH2	Add “-RM” to the end of any RA2 or RAH2 part # and increase cost by \$219.
	\$2,146		\$2,615		\$3,274		
SYSTEM 3 (3) Diffuser Assemblies 300 ft. 3/8 in. Tubing (1) 1/2HP Compressor	RA3-NC	RAH3-NC	RA3-PM	RAH3-PM	RA3	RAH3	Add “-RM” to the end of any RA3 or RAH3 part # and increase cost by \$247.
	\$2,789		\$3,362		\$3,985		
DOUBLE PISTON (DP) SYSTEMS (Uses 1/2HP double-piston compressors for more air flow to each diffuser.)							
SYSTEM 2 (DP) (2) Diffuser Assemblies 200 ft. 3/8 in. Tubing (1) 1/2HP Compressor	RA2DP-NC	RAH2DP-NC	RA2DP-PM	RAH2DP-PM	RA2DP	RAH2DP	Add “-RM” to the end of any RA2DP or RAH2DP part # and increase cost by \$219.
	\$2,350		\$2,825		\$3,480		
XL SYSTEMS (Uses 3/4HP double-piston compressors and 5/8 in. tubing for more air flow to each diffuser.)							
SYSTEM 4 (XL) (4) Diffuser Assemblies (2) 3/4HP Compressors	-		-		RA4XL	RAH4XL	Add “-RM” to the end of any RA4XL or RAH4XL part # and increase cost by \$401.
					\$6,210		
SYSTEM 5 (XL) (5) Diffuser Assemblies (2) 3/4HP Compressors	-		-		RA5XL	RAH5XL	Add “-RM” to the end of any RA5XL or RAH5XL part # and increase cost by \$423.
					\$6,661		
SYSTEM 6 (XL) (6) Diffuser Assemblies (2) 3/4HP Compressors	-		-		RA6XL	RAH6XL	Add “-RM” to the end of any RA6XL or RAH6XL part # and increase cost by \$448.
					\$7,114		

Product Notes:

- If less tubing is needed than what comes with the system, subtract retail price of the rolls not needed. If more rolls are needed, order these rolls as a separate line item.

NEW

Introducing Robust-Aire™ systems with patent-pending Aire-Guard Cabinet Technology. With innovative airflow now in two cabinet sizes, these durable systems operate at lower internal temperatures, are easier to keep clean, and will withstand the toughest outdoor conditions.



INNOVATIVE AIR FLOW

Powerful fans pull clean air through compressors for superior cooling. Testing shows compressors run cooler inside the cabinet than outside.



EXTERNAL INDICATORS

Gauges (large cabinets), valves, and filter maintenance indicators are externally viewable for easy status checks.



NEW COLOR

Cabinet color blends seamlessly with outdoor environment for a natural look.



ROBUST-AIRE™

MEDIUM SYSTEMS WITH AIRE-GUARD CABINET TECHNOLOGY

- Includes 4 - 6 diffuser assemblies and 2 compressors
- Tubing is not included
- Ideal for mid-sized ponds and lakes



Medium Diffused
Aeration Cabinet



Quiet
Operation



Diffuser Membrane
Will Not Clog



No Electricity in the Water
Makes it Safe for Swimming



LIFETIME Warranty - Diffuser & Cabinet
15-Year Warranty - Tubing
3-Year Warranty - Compressor

NEW MEDIUM SYSTEM PACKAGES

SYSTEMS INCLUDE	MEDIUM CABINET		REMOTE MANIFOLD SYSTEMS
	120V	208-240V	<i>Allows remote installation of cabinet, compressors, and valves. Systems include remote valve manifold and valve box.</i>
SYSTEM 4 (4) Diffuser Assemblies (2) 1/2HP Compressors NEW Medium Cabinet	RA4	RAH4	Add “-RM” to the end of any RA or RAH part # in this table and increase cost by \$430.
	\$5,176		
SYSTEM 5 (5) Diffuser Assemblies (2) 1/2HP Compressors NEW Medium Cabinet	RA5	RAH5	
	\$5,412		
SYSTEM 6 (6) Diffuser Assemblies (2) 1/2HP Compressors NEW Medium Cabinet	RA6	RAH6	
	\$5,920		



Kasco diffusers provide high volumes of upward water movement.

ROBUST-AIRE™

LARGE SYSTEMS WITH AIRE-GUARD CABINET TECHNOLOGY

- Includes 7 - 12 diffuser assemblies and 3 - 4 compressors
- Tubing not included
- Ideal for large recreational or industrial lakes



Kasco's Largest Diffused
Aeration Cabinet



Quiet
Operation



Diffuser Membrane
Will Not Clog



No Electricity in the Water
Makes it Safe for Swimming



LIFETIME Warranty - Diffuser & Cabinet
15-Year Warranty - Tubing
3-Year Warranty - Compressor

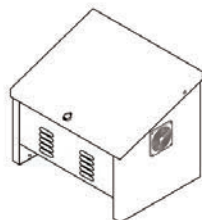
NEW LARGE SYSTEM PACKAGES

SYSTEMS INCLUDE	LARGE CABINET		REMOTE MANIFOLD SYSTEMS
	120V	208-240V	<i>Allows remote installation of cabinet, compressors, and valves. Systems include remote valve manifold and valve box.</i>
SYSTEM 7 (7) Diffuser Assemblies (3) 1/2HP Compressors NEW Large Cabinet	RA7	RAH7	<div>Add “-RM” to the end of any RA or RAH part # in this table and increase cost by \$850</div>
	\$9,826		
SYSTEM 8 (8) Diffuser Assemblies (3) 1/2HP Compressors NEW Large Cabinet	RA8	RAH8	
	\$10,256		
SYSTEM 9 (9) Diffuser Assemblies (3) 1/2HP Compressors NEW Large Cabinet	RA9	RAH9	
	\$10,551		
SYSTEM 10 (10) Diffuser Assemblies (4) 1/2HP Compressors NEW Large Cabinet	RA10	RAH10	
	\$12,060		
SYSTEM 11 (11) Diffuser Assemblies (4) 1/2HP Compressors NEW Large Cabinet	RA11	RAH11	
	\$12,471		
SYSTEM 12 (12) Diffuser Assemblies (4) 1/2HP Compressors NEW Large Cabinet	RA12	RAH12	
	\$12,995		

Compressor Cabinet Details

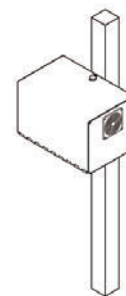
BASE MOUNT CABINET

Accommodates up to 2 compressors and supplies air to 1 - 6 diffuser assemblies. Mount on shore, away from areas that may flood.



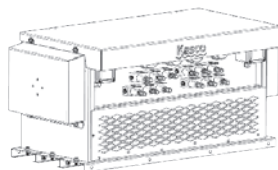
POST MOUNT CABINET

Accommodates 1 compressor and supplies air to 1 - 3 diffuser assemblies. Attach cabinet to post or vertical wall with included hardware.



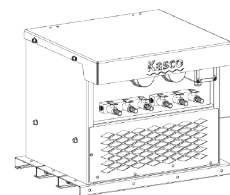
NEW LARGE CABINET WITH AIRE-GUARD CABINET TECHNOLOGY

Accommodates 3 - 4 compressors and supplies air to 7 - 12 diffuser assemblies. Mount on shore, away from areas that may flood.



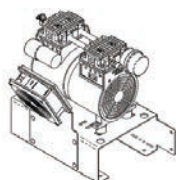
NEW MEDIUM CABINET WITH AIRE-GUARD CABINET TECHNOLOGY

Accommodates 2 compressors and supplies air to 4 - 6 diffuser assemblies. Mount on shore, away from areas that may flood.



NO-CABINET

Accommodates 1 compressor and supplies air to 1 - 3 diffuser assemblies. Mount in a clean, dry location with protection from outdoor conditions.



ROBUST-AIRE™ ACCESSORIES

PART #	DESCRIPTION	INCLUDES	MSRP
772100	Robust-Aire Dual Loop Diffuser Assembly	(1) Diffuser assembly, (1) 3/8 in. and (1) 5/8 in. barbed fitting	\$337
773380	SureSink Weighted Tubing Kit 3/8 in. (100 ft.)	All necessary fittings for attaching to the compressor, diffuser assembly, and for extending length of tubing runs	\$125
773580	SureSink Weighted Tubing Kit 5/8 in. (100 ft.)	All necessary fittings for attaching to the compressor, diffuser assembly, and for extending length of tubing runs	\$155
773385	SureSink Weighted Tubing Kit 3/8 in. (500 ft. roll)	500 ft. rolls do not include fittings	\$600
773585	SureSink Weighted Tubing Kit 5/8 in. (500 ft. roll)	500 ft. rolls do not include fittings	\$760
773300	3/8 in. tube fitting kit (included in 3/8 in. x 100 ft. tubing kits)	(1) 3/8 in. x 3/8 in. barbed connector, (2) 3/8 in. hose clamps	\$8.57
773500	5/8 in. tube fitting kit (included in 5/8 in. x 100 ft. tubing kits)	(1) 5/8 in. x 5/8 in. barbed connector, (2) 3/8 in. x 5/8 in. barbed connectors, (2) 5/8 in. hose clamps, (2) 3/8 in. hose clamps	\$18.76
773310	10 pack of 3/8 in. connector kits	(10) 3/8 in. x 3/8 in. barbed connectors, (20) 3/8 in. hose clamps	\$56.50
773058	10 pack of 5/8 in. connector kits	(10) 5/8 in. x 5/8 in. barbed connectors, (20) 5/8 in. hose clamps	\$66.50
774061	5/8 in. hose barb kit with clamps	(6) 5/8 in. barbed fittings and (6) 5/8 in. hose clamps	\$75

TEICH-AIRE

COMPRESSORS

- 120V and 208-240V options
- Quiet, oil-less piston compressors
- Built for continuous-duty, year-round, large aeration applications



ALL COMPRESSORS INCLUDE:

- Pressure relief valve
- Vibration mounts
- Intake air filter assembly
- Brass hose fittings
- 6 ft. power cord
- Thermal overload protection
- Restarts under load



1/4, 1/2 & 3/4HP
Available



3-Year Warranty



120V & 208-240V Models
Are UL & CSA Recognized



208-240V Models
Have CE Certification

PART #	HP	VOLT (V)	WEIGHT (LB)	AMP @ 0 PSI	AMP @ 20 PSI	MSRP
KM-60C	1/4	120	16	2.2	3.2	\$663
KM-60HC	1/4	208-240	16	1.1	1.6	\$663
KM-120C	1/2	120	19	3.0	4.0	\$851
KM-120HC	1/2	208-240	19	1.5	2.0	\$851
KM-200C	3/4	120	28	5.4	6.9	\$1,371
KM-200HC	3/4	208-240	28	3.1	3.7	\$1,371



SOLAR

Driving Our High-Performance Fountains, Aerators, & Compressors

Kasco solar products allow our 120V and 208-240V standard fountain, aeration, and circulation units (up to 2HP) to be powered by the sun. Controllers integrate a Variable Frequency Drive (VFD) to convert DC power to AC power.



Packages include Kasco unit and PicoCell™ controller. Customer must source solar panels and panel racking.

Powers Kasco units to operate at the same high-performance standards.

Ideal for applications long distances from power.

SOLAR

- Operates fountains and surface aerators up to 2HP, and Robust-Aire™ Post Mount Systems 1-3
- Includes Kasco unit, PicoCell™ 3500 Control Panel, connector cables, and DC disconnect
- Customer must source PV panels, panel racking, ground rod, and ground wire
- Controllers include status LED's and GFCI motor protection



Alternative Energy for
Operating our Standard Units



In Partial Sun, System Runs at
Reduced Speed to Extend Run Time



Outperforms Smaller,
Low-voltage Systems



Standard Warranty - Kasco Unit
1-Year Warranty - PicoCell™ Controller

Solar Power Packages

SOLAR MODELS	KASCO PRODUCT	HP / SYSTEM	VOLT	CORD LENGTH				# PV PANELS	AVG. RUN TIME / DAY
				50 FT	100 FT	150 FT	200 FT		
FOUNTAIN, SURFACE AERATOR, & CIRCULATOR PACKAGES									
SOL-PC-2400AF	Surface Aerator	1/2	120	\$6,403	\$6,573	\$7,114	\$7,356	4	8
SOL-PC-2400CFM	AquatiClear Circulator w/ Float	1/2	120	\$6,736	\$6,906	\$7,446	\$7,687	4	8
SOL-PC-2400CDM	AquatiClear Circulator w/ Dock Mount	1/2	120	\$6,606	\$6,776	\$7,316	\$7,557	4	8
SOL-PC-2400VFX	VFX Fountain	1/2	120	\$6,829	\$6,999	\$7,540	\$7,782	4	8
SOL-PC-3400AF	Surface Aerator	3/4	120	\$6,486	\$6,663	\$7,216	\$7,465	5	7
SOL-PC-3400CFM	AquatiClear Circulator w/ Float	3/4	120	\$6,825	\$6,980	\$7,570	\$7,791	5	7
SOL-PC-3400CDM	AquatiClear Circulator w/ Dock Mount	3/4	120	\$6,695	\$6,850	\$7,440	\$7,661	5	7
SOL-PC-3400JF	J Series Fountain	3/4	120	\$7,157	\$7,335	\$7,891	\$8,140	5	7
SOL-PC-3400VFX	VFX Fountain	3/4	120	\$6,925	\$7,096	\$7,648	\$7,897	5	7
SOL-PC-4400HAF	Surface Aerator	1	208-240	\$6,793	\$6,918	\$7,560	\$7,771	7	7
SOL-PC-4400HCFM	AquatiClear Circulator w/ Float	1	208-240	\$7,023	\$7,149	\$7,798	\$8,000	7	7
SOL-PC-4400HCDM	AquatiClear Circulator w/ Dock Mount	1	208-240	\$6,893	\$7,019	\$7,668	\$7,870	7	7
SOL-PC-4400HJF	J Series Fountain	1	208-240	\$8,201	\$8,336	\$9,015	\$9,230	7	7
SOL-PC-4400HVFX	VFX Fountain	1	208-240	\$7,815	\$7,940	\$8,595	\$8,807	7	7
SOL-PC-2.3AF	Surface Aerator	2	208-240	\$10,541	\$10,726	\$11,096	\$11,309	8	6
SOL-PC-2.3JF	J Series Fountain	2	208-240	\$11,874	\$12,120	\$12,424	\$12,690	8	6
SOL-PC-2.3VFX	VFX Fountains	2	208-240	\$11,653	\$11,844	\$12,202	\$12,388	8	6
ROBUST-AIRE™ PACKAGES (POWER CORD LENGTHS ABOVE DO NOT APPLY)									
SOL-PC-RA1-PM	Robust-Aire	RA1-PM	120	\$7,159				3	7
SOL-PC-RA2-PM	Robust-Aire	RA2-PM	120	\$7,815				4	7
SOL-PC-RA3-PM	Robust-Aire	RA3-PM	120	\$8,562				5	7

* PicoCell™ Control Panels are registered trademarks of Premiere Energy Holdings, Inc.

Product Notes:

1. Part # is the model combined with cord length (ex. SOL-PC-2400AF050).
2. Run times are annual averages. 1-2 hours less in winter, and 1-2 hours more in summer.
3. Fountain and surface aerator packages include motor unit, float, mooring ropes, unit power cord, and bottom screen.
4. AquatiClear™ Circulator packages include motor unit, power cord, and mounting option (horizontal float or dock mount).
5. Robust-Aire™ packages include dual-loop diffuser assembly, compressor, and compressor mounting option.

POND PROBIOTICS

MACRO-ZYME™ BENEFICIAL BACTERIA

Macro-Zyme is a safe, non-chemical approach to water quality management and produces a healthy, balanced ecosystem with its highly concentrated, unique blend of naturally occurring bacteria and enzymes. No irrigation restrictions or permit required.



Available as Quick-Dissolving Powder, Tablets, and Slow-Releasing Blocks



Simply Toss into Water 55° F or Warmer



Removes Pond Scum and Floating Particles



Eliminates Waste, Dead Grass, and Foul Odors



Safe for People, Pets, and Livestock

PART #	DESCRIPTION	CONTENTS TREAT	MSRP
MZ8	(1) 8 oz. WS bag	8 oz. treats 1/2 acre ft.	\$12.95
MZ8C	(40) 8 oz. WS bags (case)	Up to 20 acre ft.	\$513
MZ25	25 lb. bag of bulk powder in pail (no WS bags)	Up to 25 acre ft.	\$562
MZMP7	Macro-Zyme Muck Pucks - 7 lb. pail with 266 pucks	Up to 10 ft² per puck	\$92.25
MZMB5	Macro-Zyme Muck Block - (1) 6 lb. block	Up to 6 acre ft.	\$85.75

Product Notes:

- 1. WS = Water soluble bag
- 2. One acre foot (1 acre of surface area with 1 ft. of depth) = 325,851 gallons
- 3. To determine gallons: length (ft.) x width (ft.) x avg. water depth (ft.) x 7.48 = gallons



Quick-Dissolving Powder

For small ponds and water gardens. Reapply every 2-3 weeks.



Muck Puck Tablets

For small or medium ponds by docks or swimming areas. Reapply every 2-3 weeks.



Muck Blocks

For medium ponds, large ponds, or feeder streams. Reapply every 30 days.



Combine Pond Probiotics with a Kasco aeration method for maximized water quality results.

BEFORE

AFTER



ACCESSORIES

Mounts, Control Panels, Protective
Sleeving, & Much More



Kasco offers a robust selection of accessories that complement our main product offering, increasing their effectiveness and convenience. Accessory items are designed to help Kasco products better fit your specific application and improve your experience using Kasco products.

UNIT MOUNTING OPTIONS

Mounting Kits

Secure your Kasco unit to a dock, pier, walkway, or other in-water structure. Choose your desired depth, angle, and flow of water to achieve desired results.

Universal Kits

Secure 1/2, 3/4, and 1HP units, requires 1 in. / 25 DN nominal threaded or unthreaded pipe, supplied by customer. Includes Simple Swivel bracket (patent pending).

Industrial Kits

Secure 1/2, 3/4, 1, and 2HP units, requires 1.5 in. / 40 DN nominal threaded or unthreaded pipe, supplied by customer. Includes Simple Swivel bracket (patent pending).



Stainless Steel Hardware



Simple Swivel Bracket Directs Water to Desired Area



Multiple Angles of Unit Orientation



Lifetime Warranty



Horizontal Float

Suspend your AquatiClear Circulator below the water's surface and safely anchor it to shore. Using stainless steel hardware and components, the float accommodates 1/2, 3/4, and 1HP units.



3 Tie-Down Loops for Secure Installation



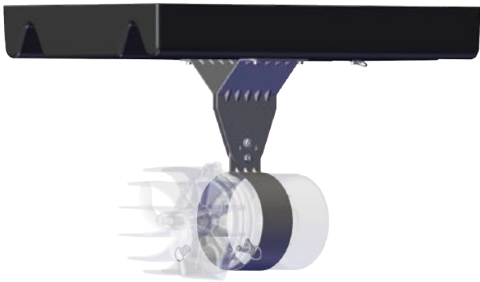
Power Cord Strain Relief Clip Included



3 Angles of Unit Orientation



3-Year Warranty



PART #	DESCRIPTION	UNITS COMPATIBLE	MSRP
243478	Universal Mount with Simple Swivel bracket (patent pending)	1/2 - 1HP units	\$365
243479	Industrial Mount with Simple Swivel bracket (patent pending)	1/2 - 2HP units in harsh conditions	\$590
997108K	U-Bolt Kit for Universal and Industrial Kits (allows installation without drilling)	1/2 - 1HP units	\$35.55
213001	Horizontal Float with tie-down loops	1/2 - 1HP units	\$495

- Product Notes:
- For Universal and Industrial Kits, customer-supplied pipe must not exceed 10 ft.
 - For Universal and Industrial Kits, customer must supply hardware to secure mount.
 - U-bolt Kit (PN: 997108K) available for Universal and Industrial Kits allowing installation without drilling into structure.

CONTROL PANELS

Control panels allow energy-saving automatic control of your Kasco unit. Select your desired settings, and the control panel will handle the rest. Kasco control panels are approved and listed to the most stringent UL and CSA standards to deliver the safety and performance you need.



PART #	MODEL #	USE WITH	CONTROL FUNCTION	GROUND FAULT PROTECTION	MSRP
125250	C-25	120V, 1/2-1HP fountains, AquatiClear Circulators and surface aerators	24-HR timer and photocell	6 milliamp (human-rated)	\$351
176005	C-85	208-240V, 3/4-2HP fountains and surface aerators	(2) 24-HR timers	6 milliamp (human-rated)	\$1,942
176090	C-95	208-240V, 3-5HP fountains and surface aerators	(2) 24-HR timers	6 milliamp (human-rated)	\$1,946
176332	C-220	208-240V, 3/4-1HP AquatiClear Circulators 208-240V, 3/4-2HP surface aerators	24-HR timer	6 milliamp (human-rated)	\$1,288
176333	C-230	208-240V, 3-5HP surface aerators	24-HR timer	6 milliamp (human-rated)	\$1,288
176210	CA-3235	208-240V, 2-5HP three phase surface aerators	24-HR timer	30 milliamp (equipment-rated)	\$3,294
176200	CF-3235	208-240V, 2-5HP three phase fountains and surface aerators	(2) 24-HR timers	5 milliamp (human-rated)	\$4,226
176204	CF-3075	208-240V, 7.5HP three phase fountains	(2) 24-HR timers	5 milliamp (human-rated)	\$3,948

Product Notes:

1. The C-25 has one timer to operate the unit and a photocell to operate the lights.
2. The C-85, C-95, CF-3235 and CF-3075 have two timers, one for the unit and one for the lights. These panels do not include a photocell.



EXTRAS

Get the most from your Kasco unit through the accessories listed below. From strain reliefs and protective cord sleeves to quick disconnects, Kasco has what you need to keep your unit operating at its best.



NEW Stainless Steel Protective Cord Sleeving is available for any cord, sold in 25 ft. increments. Contact Kasco for pricing.

PART #	DESCRIPTION	MSRP
243609	AquatiClear Shallow Water Install Kit	\$120
636400	Optional 3-point strain relief conversion kit for 16-gauge through 10-gauge cords	\$128
636175	Quick disconnect added to 50 ft. or 100 ft. power cord for units <i>(Quick disconnect is already installed on 100 ft. cords for all 1HP (120V), 2HP, 3.1HP, and 5.1HP units)</i>	\$296
636212	Quick disconnect added to power cord for lighting systems <i>(Quick disconnect comes standard on RGBW LED lighting systems)</i>	\$288
840303	3-light kit adapter for 3-piece sectional floats	\$50.25
840306	6-light kit adapter for 3-piece sectional floats	\$411
997108K	U-bolt kit for Universal and Industrial Mount Kits allowing installation without needing to drill into structure.	\$35.55
645315	3/8 in. flex sleeving per foot (for 16,14, and 12-gauge cords) - 50 ft. increments	\$3.02
645317	3/8 in. flex sleeving per foot installed on cord at Kasco - 50 ft. increments	\$4.29
645330	1/2 in. flex sleeving per foot (for 10-gauge cords) - 50 ft. increments	\$3.36
645332	1/2 in. flex sleeving per foot installed on cord at Kasco - 50 ft. increments	\$4.49
645336	1/2 in. and 3/8 in. speed tool for installing flex sleeving	\$16.31
645340	3/4 in. flex sleeving per foot (for 8-gauge cords) - 50 ft. increments	\$4.52
645342	3/4 in. flex sleeving per foot installed on cord at Kasco - 50 ft. increments	\$5.68
645346	3/4 in. speed tool for installing flex sleeving	\$19.71
990690	Industrial Upgrade Option - modify any AquatiClear™ Circulator or surface aerator to use a double-mechanical seal and stainless steel domed top	\$653
990926	Food grade mineral oil option	Contact Kasco for pricing.



KASCO DE-ICERS

THE #1 Selling De-icer in the World



DE-ICERS

Protect Your Waterfront from Ice Damage

By pulling warmer water up, Kasco De-icers create an opening at the water's surface, keeping boats and docks safe from damaging ice buildup.

Kasco De-icers create more thrust than any other product on the market. More thrust means more open water to better protect your property.

- Includes (2) 20 ft. suspension ropes
- Mount with ropes or Universal or Industrial Mount Kits
- Optional control panels for automatic time and temperature settings
- Offered as 120V and 208-240V



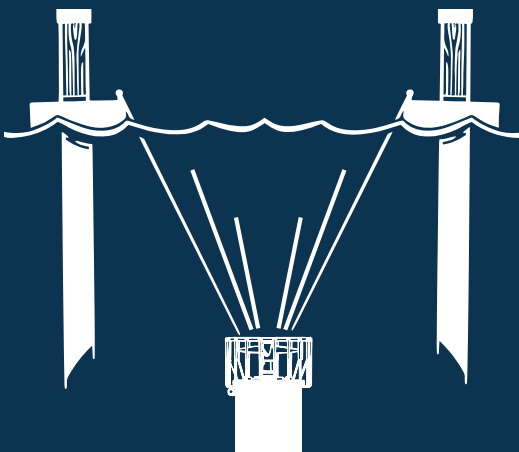
1/2, 3/4, & 1HP
Available



3-Year Warranty



ETL Listed to CSA
and UL Standards



AVAILABLE TO SPECIALTY DISTRIBUTION. CONTACT KASCO FOR DETAILS.

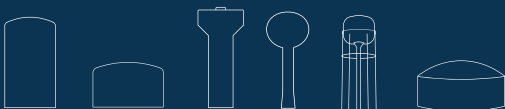




 **CERTISAFE**



There's sort of safe. Or, there's CertiSafe.



CERTISAFE™ TANK MIXER

NSF / ANSI 61 & 372 Certified Tank Mixer

The CertiSafe™ Tank Mixer blends drinking water in tanks and reservoirs to create an environment homogeneous in chemical concentration and temperature, improving overall water quality.

These energy-efficient potable water mixing systems can be mounted in a variety of ways and are easy to install and maintain. Our team of experts can provide system recommendations for your unique application to improve water quality from the tank to the tap.

- 120V, 208-240V, and solar-powered options
- Floor Mount, Pipe Mount, and Suspended Mount options
- Optional control panels monitor and control unit



1/2, 3/4, 1 & 2HP
Available



3-Year Warranty
*Optional 5-year
Extended Warranty*



ETL Listed to CSA
and UL Standards



NSF / ANSI 61 & 372
Certified



Floor Mount



Suspended Mount



Pipe Mount



WARRANTY PERIODS
(INCLUDES CONTROL PANEL):

- J SERIES FOUNTAINS
- 3/4 and 1HP: 2 years
 - 2HP: 3 years
 - 3, 5, and 7.5HP: 5 years

- VFX FOUNTAINS
- 1/2, 3/4, and 1HP: 2 years
 - 2 and 5HP: 3 years

- SURFACE AERATORS
- 1/2, 3/4, and 1HP: 2 years
 - 2, 3, and 5HP: 3 years

- WATERGLOW LIGHTING
- Universal Lighting: 2 years
 - RGB LED: 2 years
 - Composite LED: 2 years
 - Stainless Steel LED: 3 years
 - RGBW LED: 5 years

- AQUATICLEAR™ CIRCULATORS
- 1/2, 3/4, and 1HP: 2 years

- ROBUST-AIRE™
- Compressor: 3 years
 - Tubing: 15 years
 - Diffuser: Lifetime
 - Cabinet: Lifetime

- SOLAR
- PicoCell™ Controller: 1 year
 - Kasco Unit: Standard Kasco Warranty

- “R” (REPLACEMENT) UNITS
- 1/2, 3/4, and 1HP: 2 years
 - 2, 3, and 5HP units: 3 years
 - 7.5HP: 3 years

WARRANTY

STANDARD WARRANTY:

Kasco Marine, Inc. warrants products to be free from defects in material or workmanship under normal use and service. This warranty excludes damage to the equipment from improper handling or installation as well as damage caused by environmental factors (examples include but are not limited to: cuts in or crushing of the power cord, damage to mooring lines and ropes, foreign objects causing damage to props or motor shafts, and improper power feeds). The Kasco Marine, Inc. obligation under this warranty is limited to replacing or repairing, free of charge, any defective part within the warranty period.

All units sent back to the factory or authorized repair center should be accompanied by the repair form, found at kascomarine.com. Customer is responsible to pay shipping charges.

WARRANTY IS VOID IF:

1. The product is not maintained according to the maintenance recommendations supplied in owner’s manual.
2. The product is returned for repair without the power cord (cuts in the power cord and field splices are not covered under warranty).
3. The unit, control box, or power cord are altered in any way from original shipment.
4. The product is not used with a GFCI-protected outlet, or not used with the supplied GFCI control panel.
5. The product is damaged by unauthorized tampering.
6. The sacrificial anode shows significant deterioration.

EXTENDED WARRANTY:

The extended warranty is an additional 2 years beyond the 3 year warranty.

- The unit and the extended warranty must be ordered at the same time and on the same P.O. with the warranty as its own line item.
- Standard warranty requirements apply (regular cleaning, no unauthorized tampering, etc.) - no additional maintenance required.
- Unit must be sold with a control panel.
- Coverage includes unit, control panel and power cord.
- ELIGIBLE PRODUCTS:

- a. 2HP J Series Fountains
- b. 2 and 5HP VFX Fountains
- c. 2, 3, and 5HP Surface Aerators

PART #	HP	MSRP
EW2F	2	\$800
EW3F	3	\$925
EW4F	5	\$1,100

MAP, PRODUCT RETURN & REPAIR

MAP (MINIMUM ADVERTISED PRICING):

MAP on fountains, surface aerators, AquatiClear™ Circulators, WaterGlow Lighting, Robust-Aire™ and Macro-Zyme™ is full retail.

Prices are subject to change without notice and are not guaranteed for the entire year.

NEW OR UNUSED PRODUCT RETURN:

If an item has not entered the water, it can be returned to Kasco:

1. Contact Kasco to receive an RMA number and RMA form.
2. Package the item(s) adequately (original packaging preferred) and return to Kasco with completed RMA form and RMA number on the shipping label or written on the box.

IMPORTANT:

- 10% restocking fee will be applied to all returns.
- An item will not be accepted for return if it has been in the water.
- Kasco will not reimburse for product that was damaged during shipment.
- Only new, clean and unused items may be returned for credit.
- Items may not be returned after 6 months from the time of purchase.

REPAIR:

Equipment can be shipped to Kasco or an authorized service center for a repair estimate. Contact us if you'd like to find an authorized repair center near you.

Kasco aims to provide a free cost estimate within 48 hours. After customer approval, the repair can be made in just a few days.

- Please include upper pump housing or wire cage for aerators and de-icers.
- Kasco is not responsible for shipping damage from customer to Kasco.
- Do not send floats. Kasco will charge \$90 for float disassembly and cleaning.
- It is the responsibility of the customer to ship and pay freight to Kasco.

SHIPPING

DAMAGED SHIPMENTS:

Please thoroughly inspect incoming shipments prior to accepting. Once a shipment is accepted by the receiver, it is difficult, if not impossible, to get the freight company to pay for damage. If boxes have been damaged, opened, repackaged, a pallet re-strapped, etc., it is best to simply refuse the delivery. This ensures the carrier cannot blame the receiver for the damage and that the shipment gets returned to Kasco. In the unfortunate event of damage or shortage to your order, please notify customer service and make a note on any shipping-related documents. Photos of the packaging and product will also help our customer service team expedite your claim and find the fastest resolution.

SHIPPING

FREIGHT QUOTES:

Please email freight quotes to sales@kascomarine.com and include the below:

- Shipping address
- Commercial or residential
- Offload or lift gate requirements
- Delivery notification contact info

NOTE: Some addresses are extended delivery areas and, additional charges may apply. Quotes are estimates, valid for 30 days, and may vary.



DISTRIBUTOR TOOLS



KASCO WEBSITE



DISTRIBUTOR PORTAL



ONLINE TRAINING



QUALIFIED LEAD ROUTING



Kasco[®]

MOVING WATER FORWARD, SINCE 1968

kascomarine.com | 715.262.4488 | sales@kascomarine.com

800 Deere Road, Prescott, WI U.S.A. 54021