



MOVING WATER FORWARD, SINCE 1968

2026 PRICE CATALOG

50HZ RETAIL

kascomarine.com

Fountains | Lighting | Circulators | De-icers | Surface Aerators | Diffused Aerators | Pond Probiotics | Accessories



MOVING WATER FORWARD

At Kasco, we help people realize the full potential of the water in their world. Our products are the most efficient and effective solutions for improving, protecting, and beautifying water.

OUR PEOPLE MAKE KASCO THE BEST IN THE BUSINESS

Superior customer service is in our DNA. From design and development to delivery and support, we provide an unwavering commitment to our customers.



COMPANY HISTORY

For more than 55 years, Kasco has set the industry benchmark for quality products, personalized service, and fast delivery. Learn more about our story below.



1968

Marina owner, Bill Skluzacek, developed a de-icing unit to prevent ice from damaging boats in the water over winter. His innovation catches the attention of marina-goers, and Kasco is born.

1980

Operations moved to a phone-switching building in St. Croix Beach, MN, and Kasco hired a full-time staff. This building was used as the main office for 15 years.



1988

Kasco traveled to Alaska with our De-icers to help rescue whales stuck underneath the ice. The De-icers were able to keep areas of ice open, allowing the whales to swim to safety. The story gained national media attention.

1988

The De-icer was modified by adding a float above the propeller, creating Kasco's first surface aerator.

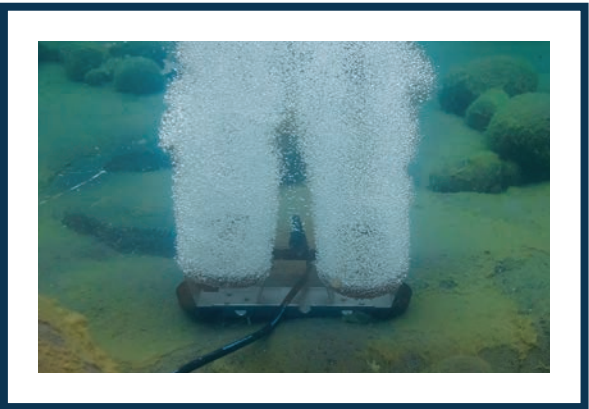


1989

Kasco modified the surface aerator by adding a nozzle inside the float, creating our first floating fountains.

1997

Kasco purchased our current facility in Prescott, WI, expanding to 12,000 sq. ft.



2010

Kasco introduced RobustAire™ Diffused Aeration Systems. 2022-2024 marked an extensive redesign of the product line.

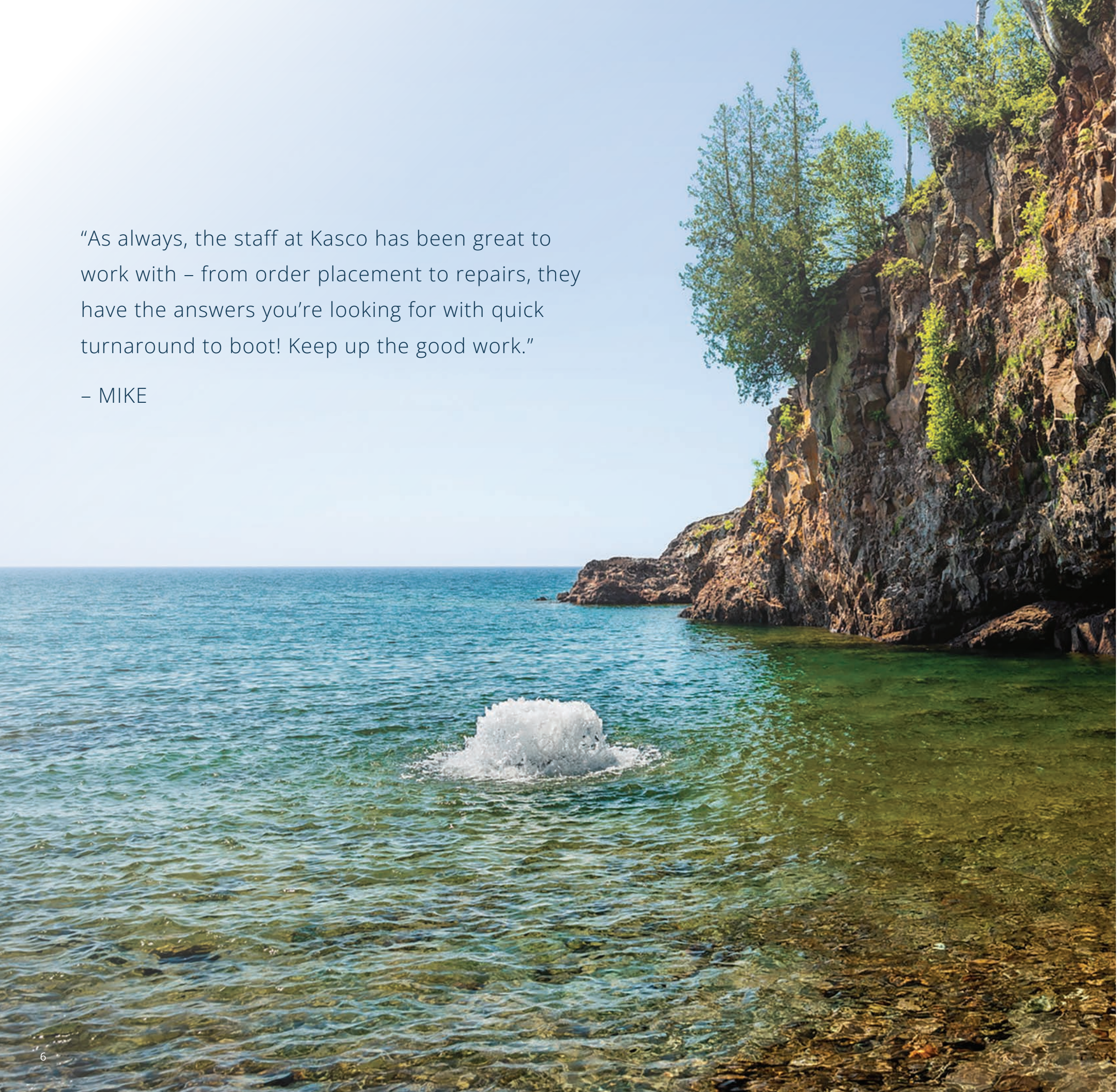
2022

Kasco completed remodeling and expansion projects in 2007, 2013, and 2022, which grew our facility to nearly 100,000 sq. ft.



Above: Founder Bill Skluzacek (right) at the Afton Marina demonstrating an early De-icer unit.





“As always, the staff at Kasco has been great to work with – from order placement to repairs, they have the answers you’re looking for with quick turnaround to boot! Keep up the good work.”

– MIKE

TABLE OF CONTENTS

Moving Water Forward..... 2

Why Kasco..... 3

Company History 4

EJ Series Fountains..... 8

 EJ Series Premium Nozzles.....12

EVFX Series Fountains 14

WaterGlow Lighting 18

 Composite LED19

AquatiClear™ Circulators 20

De-icers 24

Surface Aerators 28

RobustAire™ Diffused Aeration Systems 32

 RobustAire System Comparison.....37

Compressors 38

Diffused Aeration Accessories.....40

Unit Mounting Options 41

Pond Probiotics 42

Warranty Information 44

Warranty Periods & Distributor Tools 45

Product Return & Repair 46

Shipping & Patents 47



EJ SERIES

Elegant Fountain Displays

Kasco EJ Series Fountains offer dramatic, aesthetically pleasing displays at the best value on the market. Designed with both beauty and function in mind, each package includes multiple twist-and-lock nozzles at no extra charge, allowing you to choose patterns ranging from attention-demanding geysers to elegant 3-tier displays.



Packages include motor unit, 15m mooring ropes, multiple nozzles, and power cord.

Available in 1/2 - 5HP sizes and single and three phase options to fit virtually any application.

2HP per 4,000m² recommended for proper aeration.



5 Display Patterns **Included**

Impressive Heights & Widths

Easily Change Nozzles

Snap-on Lights Available

EJ SERIES FOUNTAINS

LARGE SELECTION OF BEAUTIFUL PATTERNS

- Includes an impeller guard and bottom screen to prevent clogging
- Stub cord includes quick disconnect and stainless steel strain relief
- Customer or installer adds additional length power cord as needed



5 Patterns Included*



Premium Nozzles
Available



Shallow Operating
Depths



Lighting Packages
Available



2-Year Warranty



CE Marked

PART NUMBER	HP	VOLT	PHASE	CORD LENGTH (m)
2400EJF000	1/2	220	1	Stub Cord (1m)
2400EJF010	1/2	220	1	10
2400EJF030	1/2	220	1	30
3400EJF000	3/4	220	1	Stub Cord (1m)
3400EJF010	3/4	220	1	10
3400EJF030	3/4	220	1	30
4400EJF000	1	220	1	Stub Cord (1m)
4400EJF010	1	220	1	10
4400EJF030	1	220	1	30
8400EJF000	2	220	1	Stub Cord (1m)
2.3EHJF000	2	380	3	Stub Cord (1m)
3.1EJF000	3	220	1	Stub Cord (1m)
3.3EHJF000	3	380	3	Stub Cord (1m)
5.3EHJF000	5	380	3	Stub Cord (1m)

Product Notes:
1. Custom cord lengths available. Contact Kasco for details.

PATTERN DIMENSIONS

HP	PATTERN DIMENSIONS (H X W) (m)							
	SEQUOIA	CYPRESS	WILLOW	LINDEN	BIRCH	BALSAM	REDWOOD	SPRUCE
1/2	3.2 x 2.4	1.8 x 4.5	1.6 x 5.2	2.3 x 6.7	1.7 x 1.5	-	-	-
3/4	3.5 x 2.4	2.1 x 5.5	1.9 x 5.8	2.7 x 8.5	2.1 x 2	-	-	-
1	-	-	-	2.8 x 8.3	1.9 x 2.5	2.8 x 7.3	4 x 1.3	3.8 x 2.2
2	-	-	-	4.5 x 9.8	3.3 x 2.5	4.9 x 9.4	6.9 x 1.8	5.7 x 2.5
3	-	-	-	5.5 x 11.9	4.1 x 3.1	5 x 10.2	7.2 x 1.8	7 x 2.7
5	-	-	-	6.2 x 12.2	5.8 x 3	4.7 x 9.4	8.1 x 1.8	7.9 x 2.7



NEVER enter the water with
electrical equipment connected
and / or in operation.



SEQUOIA



BIRCH



CYPRESS



BALSAM



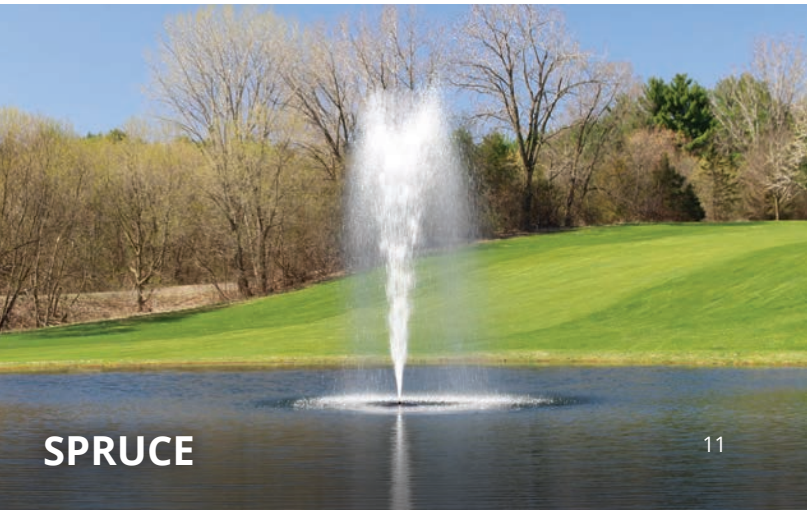
WILLOW



REDWOOD



LINDEN



SPRUCE

PREMIUM NOZZLES

FOR EJ SERIES FOUNTAINS

Further define your EJ Series experience with a Premium Nozzle, now available for all HP sizes. Purchased separately, Kasco Premium Nozzles provide crisp and distinct streams of water for dramatic and attention-demanding displays.



Fern



Available for All EJ Series Fountains



4 Pattern Choices for 1/2 & 3/4HP Units



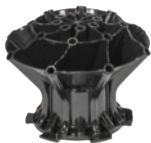
6 Pattern Choices for 1, 2, 3, & 5HP Units



Twist-and-lock Installation



Purchased Separately



Mighty Oak



Magnolia



Mahogany



Madrone



Palm

PATTERN	1/2 & 3/4HP PART NUMBERS & DIMENSIONS (H x W) (m)			1, 2, 3, & 5HP PART NUMBERS & DIMENSIONS (H x W) (m)				
	PART NUMBER	1/2HP	3/4HP	PART NUMBER	1HP	2HP	3HP	5HP
Mighty Oak	431335K	2.1 x 5.3	2.9 x 7.9	841335K	2.8 x 8.8	4.3 x 12.8	4.4 x 14.6	6.9 x 18.3
Magnolia	431325K	2 x 6.1	2.6 x 8.8	841325K	2.5 x 9	4.4 x 15.2	5.3 x 17.1	6.2 x 22.6
Mahogany	431345K	2.4 x 5.5	3.2 x 7.9	841345K	3.2 x 9.1	4.7 x 11.3	5.4 x 13.1	6.9 x 18.9
Madrone	431330K	2.4 x 6.1	3.4 x 8.5	841330K	3.4 x 9.4	4.7 x 12.5	5.3 x 16	7 x 18.9
Palm	-	-	-	841320K	2.1 x 5.4	3.8 x 8.5	4.7 x 10.1	5.2 x 10.4
Fern	-	-	-	841315K	2.4 x 8.5	4.3 x 12.9	4.9 x 15.8	6.1 x 19.8



MIGHTY OAK



MAGNOLIA



MAHOGANY



MADRONE



PALM



FERN *Best in Narrow Ponds*

EVFX SERIES

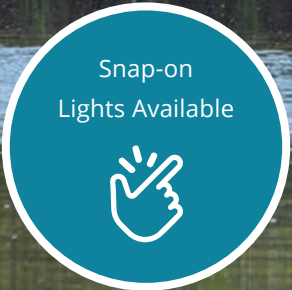
The Best of Beauty and Aeration

Kasco EVFX Series Fountains are the choice for an elegant display with superior aeration benefits. These high-flow units are efficient, easy to install and operate, and ideal for many applications.

Packages include motor unit, float, 15m mooring ropes, and power cord.

Available in 1/2 - 3HP sizes and single and three phase options to fit virtually any application.

1.5HP per 4,000m² recommended for proper application.



EVFX SERIES FOUNTAINS

ELEGANT DISPLAY WITH SUPERIOR AERATION

- 1/2, 3/4, 1, & 3HP available as single phase
- 3HP also available as three phase
- Includes bottom screen to prevent clogging
- Stub cord includes quick disconnect and stainless steel strain relief
- Customer or installer adds additional length power cord as needed



Classic V-shaped
Pattern



Shallow Operating
Depths



Lighting Packages
Available



2-Year Warranty



CE Marked

PART NUMBER	HP	VOLT (V)	PHASE	CORD LENGTH (m)
2400EVFX000	1/2	220	1	Stub Cord (1m)
2400EVFX010	1/2	220	1	10
2400EVFX030	1/2	220	1	30
3400EVFX000	3/4	220	1	Stub Cord (1m)
3400EVFX010	3/4	220	1	10
3400EVFX030	3/4	220	1	30
4400EVFX000	1	220	1	Stub Cord (1m)
4400EVFX010	1	220	1	10
4400EVFX030	1	220	1	30
3.1EVFX000	3	220	1	Stub Cord (1m)
3.3EHVFX000	3	380	3	Stub Cord (1m)

Product Notes:
1. Custom cord lengths available. Contact Kasco for details.



NEVER enter the water with
electrical equipment connected
and / or in operation.





WATERGLOW LIGHTING

Add Beauty to Your Evening Displays

Kasco WaterGlow Lighting dramatically illuminates your fountain or surface aerator pattern during the evening hours. Available in composite housings and with several color options, these versatile LED lights are a perfect addition to your display.



Adds breathtaking beauty for extended enjoyment of your water feature.

Several fixture configurations to suit a variety of applications.

Energy efficient with bright technology.

COMPOSITE LED NON-CE MARKED

THE PERFECT VIBRANT SETTING

These LED Lighting Systems provide classic elegance and include 4 colored lenses to create the perfect illuminated display.

- Available for fountains and surface aerators
- Includes light fixtures, snap-on clips, power cord, colored lenses, lens caps, and waterproof disconnect caps
- 3- and 6-fixture kits available



Displays White and Includes Red, Green, Blue, and Amber Lenses



Durable Composite Fixtures for Watertight Operation



11 Watts and 910 Lumens Per Fixture



2-Year Warranty

LIGHT KIT PACKAGES

PART NUMBER	RECOMMENDED UNIT SIZE <small>FOR FOUNTAINS AND SURFACE AERATORS</small>	CORD LENGTH (m)
3-FIXTURE KITS		
LED3C11-000E	1/2 - 1HP units	Stub Cord (1m)
LED3C11-010E	1/2 - 1HP units	10m
LED3C11-030E	1/2 - 1HP units	30m
6-FIXTURE KITS		
LED6C11-000E	2 - 5HP units	Stub Cord (1m)
LED6C11-010E	2 - 5HP units	10m
LED6C11-030E	2 - 5HP units	30m

LIGHT KIT ACCESSORIES

PART NUMBER	DESCRIPTION
840303	3-light kit adapter for 3-piece sectional floats
840306	6-light kit adapter for 3-piece sectional floats



AQUATICLEAR™

Clog-Resistant Waterfront Management

AquatiClear™ by Kasco is a clog-resistant circulator that keeps water near docks, canals, and shorelines free of floating debris and foul odors. Utilizing patented Clean Current Technology™, AquatiClear features a prop guard with smooth, rounded tines that allow debris to slip by instead of collect around the unit, meaning continuous operation and less maintenance.

Packages include motor unit and power cord. Mounting options available.

Crown-like prop guard with smooth, rounded tines decreases clogging from floating algae and debris.

Versatile mounting options allow AquatiClear to direct the flow of water to address specific areas.



BEFORE

Clears Shorelines of Floating Debris

Debris Slips by Instead of Clogging



AFTER

Less Clogging Reduces Maintenance

Clean Current Technology™

AQUATICLEAR™

CLOG-RESISTANT CIRCULATOR

- 220V, single phase options
- Marine-grade stainless steel for saltwater / brackish water compatibility
- Purchased as stand-alone unit, or as part of a Horizontal Float or Universal Mount package. Shallow Water Install Kit available.
- Universal Mounts include the Simple Swivel bracket



1/2 and 3/4HP
Available



Crown-like Prop Guard
Decreases Clogging



2-Year Warranty



CE Marked

PART NUMBER	HP	VOLT	PHASE	CORD LENGTH (m)
UNIT ONLY PACKAGES - "EC" (NO MOUNT)				
2400EC000	1/2	220	1	Stub Cord (1m)
2400EC010	1/2	220	1	10
2400EC030	1/2	220	1	30
3400EC000	3/4	220	1	Stub Cord (1m)
3400EC010	3/4	220	1	10
3400EC030	3/4	220	1	30
UNIT AND HORIZONTAL FLOAT PACKAGES - "ECFM"				
2400ECFM000	1/2	220	1	Stub Cord (1m)
2400ECFM010	1/2	220	1	10
2400ECFM030	1/2	220	1	30
3400ECFM000	3/4	220	1	Stub Cord (1m)
3400ECFM010	3/4	220	1	10
3400ECFM030	3/4	220	1	30
UNIT AND UNIVERSAL MOUNT PACKAGES - "ECDM" (CUSTOMER MUST SUPPLY PIPE)				
2400ECDM000	1/2	220	1	Stub Cord (1m)
2400ECDM010	1/2	220	1	10
2400ECDM030	1/2	220	1	30
3400ECDM000	3/4	220	1	Stub Cord (1m)
3400ECDM010	3/4	220	1	10
3400ECDM030	3/4	220	1	30

- Product Notes:
1. If AquatiClear is installed less than .5m below the surface, a Shallow Water Install Kit is recommended. See page 23.
 2. Custom cord lengths available. Contact Kasco for details.

AQUATICLEAR ACCESSORIES

PART NUMBER	DESCRIPTION
243609	Shallow Water Install Kit

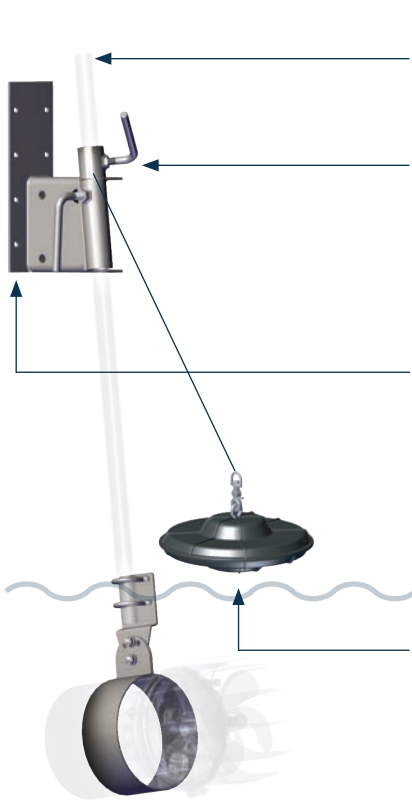


NEVER enter the water with
electrical equipment connected
and / or in operation.

AQUATICLEAR MOUNTING OPTIONS

UNIVERSAL MOUNT (INCLUDED WITH "ECDM" MODELS)

Mount AquatiClear to a dock or similar structure and easily adjust its angle and depth. Adjust rotation with the patented Simple Swivel bracket. Mount includes a lifetime warranty.



CUSTOMER-SUPPLIED PIPE
1 in. / 25 DN threaded or unthreaded
pipe purchased separately.

SIMPLE SWIVEL BRACKET
Rotate AquatiClear to direct flow
of water in desired direction.
Included with Universal Mount.

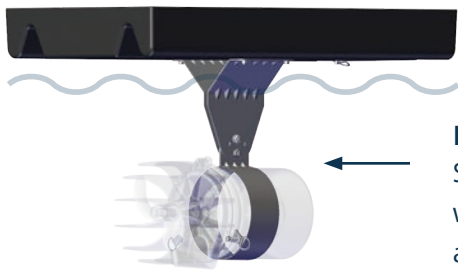
U-BOLT KIT
Optional U-bolt Kit
(PN 997108K) attaches base
plate to dock piling without
drilling into structure.
See page 41 for pricing.



SHALLOW WATER INSTALL KIT
Optional Shallow Water Install Kit
(PN 243609) allows for installation
in shallow applications without loud
whirlpool noise at the surface.
See page 22 for pricing.

HORIZONTAL FLOAT (INCLUDED WITH "ECFM" MODELS)

Secure AquatiClear on the surface with three ropes and tie-down loops. Three angles of orientation moves water in desired direction. Float includes a 3-year warranty.



EASILY SECURE & ADJUST
Secure AquatiClear at the surface
with high-strength tie-down loops
and several adjustment options.



Pair Kasco AquatiClear
Circulators with Pond
Probiotics for maximized
results. See page 42 for
details.



DE-ICERS

Over 50 Years of Dock Defense

By pushing warmer water up, Kasco De-icers create an opening at the water's surface, keeping boats and docks safe from damaging ice buildup. De-icers also keep fish and aquatic species healthy throughout the winter by allowing oxygen to enter the open water areas. Whether in a pond, lake, or marina, Kasco De-icers provide a hassle-free solution for maintaining clear, open water.

Packages include motor unit, power cord, and 2 mooring ropes. Mounting options available.

Creates more thrust than any other de-icing product. More thrust means more open water to protect your property.

Optional dock mount kits allow for easy angle and depth adjustments allowing de-icers to fit countless applications.



Creates More Open Water for the Best Ice Protection



Lightweight and Easy to Install



Stainless Steel Components for Durability



Provides a Healthy Aquatic Environment



DE-ICERS

PROTECT YOUR PROPERTY FROM ICE DAMAGE

- 220V, single phase options
- Includes (2) 6m mooring ropes
- Mount with ropes or optional Universal or Industrial Mount Kits



1/2, 3/4, & 1HP
Available



Prevents Ice Buildup and Improves
Aquatic Environment



2-Year Warranty



CE Marked

PART NUMBER	HP	VOLT (V)	PHASE	CORD LENGTH (m)
UNIT ONLY PACKAGES - "ED" (NO MOUNT)				
2400ED000	1/2	220	1	Stub Cord (1m)
2400ED010	1/2	220	1	10
2400ED030	1/2	220	1	30
3400ED000	3/4	220	1	Stub Cord (1m)
3400ED010	3/4	220	1	10
3400ED030	3/4	220	1	30
4400ED000	1	220	1	Stub Cord (1m)
4400ED010	1	220	1	10
4400ED030	1	220	1	30

- Product Notes:
1. De-icers should be placed 1.2-1.8m below the surface, and .3m off the bottom.
 2. Mounting option sold separately. See page 27.
 3. All Kasco De-icers ship completely assembled. No hardware is needed unless using an optional Universal Mounting Kit.



De-icers create areas of open water which could be dangerous to people or animals nearby. Consider posting a warning sign near the area.



NEVER enter the water with electrical equipment connected and / or in operation.

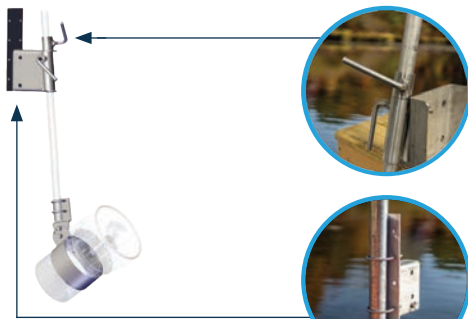
DE-ICER ACCESSORIES

MOUNTING OPTIONS

Secure your Kasco De-icer to a dock or similar structure using the included ropes or optional mount kit. Choose depth, angle, and direction of water flow to achieve desired results. Use an optional U-bolt Kit with the Universal and Industrial Mount to attach the base plate to dock piling without drilling into structure. See page 41.



Mooring Ropes
(Included)



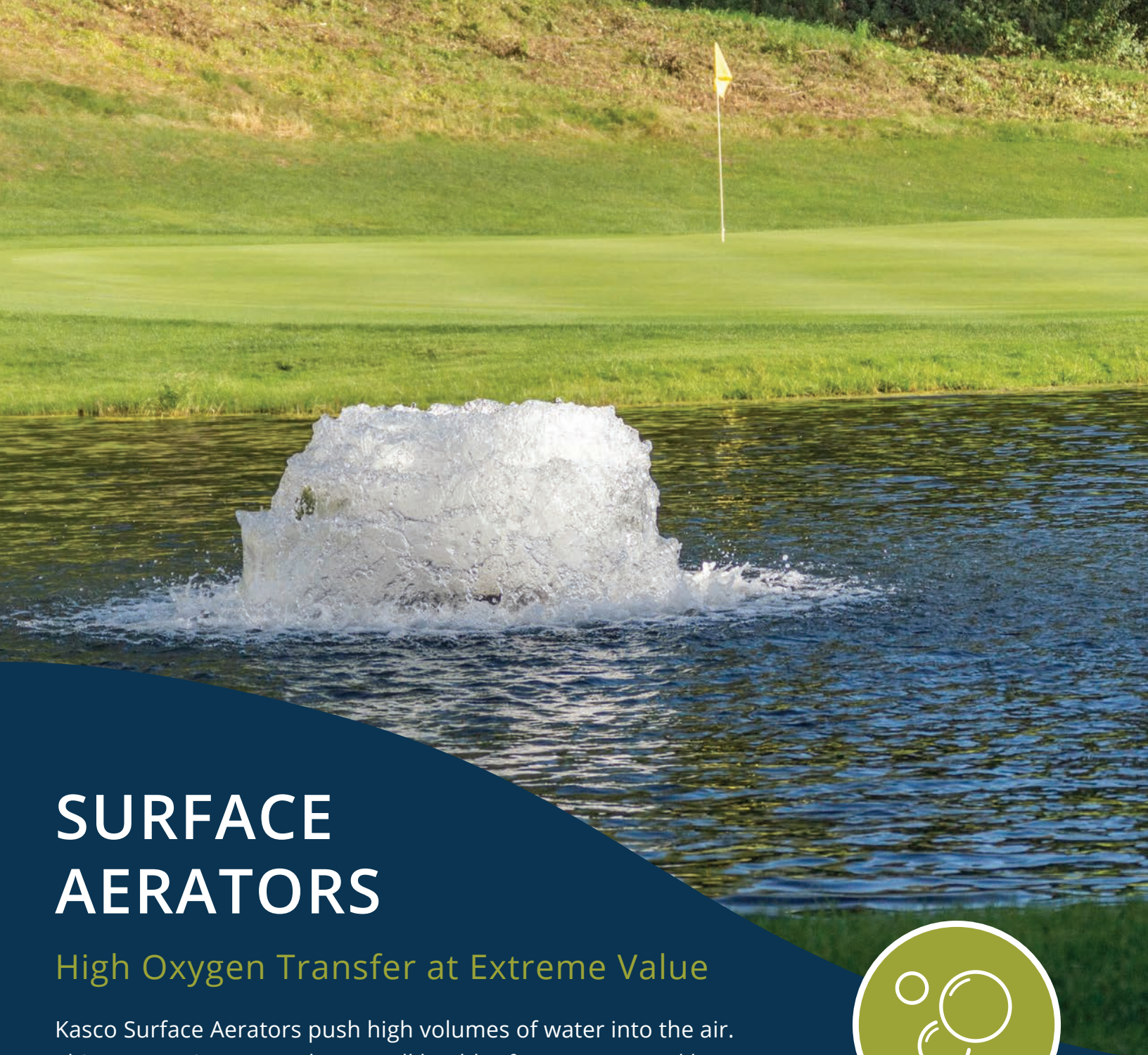
Universal Mount
(Purchased Separately)

Patented Simple Swivel bracket allows unit to be rotated.

U-bolt Kit shown attaching mount base to dock piling.

PART NUMBER	DESCRIPTION	CUSTOMER-SUPPLIED ITEMS
243485	Universal Mount	Customer supplies 1 in. / 25 DN nominal threaded or unthreaded pipe and (8) 5/16 in. lag screws to mount base plate to dock. To install mount without drilling into dock, use available U-bolt Kit instead of lag screws.
243478	Universal Mount with Patented Simple Swivel Bracket	
243484	Industrial Mount	Customer supplies 1.5 in / 40 DN nominal threaded or unthreaded pipe and (8) 5/16 in lag screws to mount base plate to dock. To install mount without drilling into dock, use available (2) U-bolt Kits instead of lag screws.
243479	Industrial Mount with Patented Simple Swivel Bracket	
997108K	U-bolt Kit for drill-free installation (Each kit includes 2 U-bolts and associated hardware.)	-

- Product Notes:
1. Pipes should not exceed 3m and can be threaded or unthreaded (supplied by customer).
 2. Industrial Mounts are suggested for units in harsh environments.



SURFACE AERATORS

High Oxygen Transfer at Extreme Value

Kasco Surface Aerators push high volumes of water into the air. This process increases the overall health of your water and keeps it thoroughly mixed. Introducing oxygen and water movement breaks up stratification, eliminates odor, discourages algae growth, and promotes a healthy aquatic environment.

Packages include motor unit, 15m mooring ropes, and power cord.

Available in 1/2 - 3HP, single or three phase options to fit a variety of applications.

Proven aeration performance for continuous, supplemental, or emergency use.



Great for
Backyard Ponds,
Fish Farms, and More

For Continuous or
Supplemental Use

Pair with
WaterGlow
Lighting Kit

Ideal in Depths
Less than 2.4m



SURFACE AERATOR

SINGLE & THREE PHASE

- 1/2, 3/4, 1, 2, & 3HP available as single phase
- 2 and 3HP also available as three phase
- BTM SCR models include a bottom screen to prevent clogging
- Stub cord includes quick disconnect and strain relief



Lighting Packages Available



Shallow Operating Depths



Pair with Pond Probiotics for Maximized Results



2-Year Warranty



CE Marked

PART NUMBER	HP	VOLT (V)	PHASE	CORD LENGTH (m)
2400EAF000	1/2	220	1	Stub Cord (1m)
2400EAF010	1/2	220	1	10
2400EAF030	1/2	220	1	30
2400EAF000 (BTM SCR)	1/2	220	1	Stub Cord (1m)
2400EAF010 (BTM SCR)	1/2	220	1	10
2400EAF030 (BTM SCR)	1/2	220	1	30
3400EAF000	3/4	220	1	Stub Cord (1m)
3400EAF010	3/4	220	1	10
3400EAF030	3/4	220	1	30
3400EAF000 (BTM SCR)	3/4	220	1	Stub Cord (1m)
3400EAF010 (BTM SCR)	3/4	220	1	10
3400EAF030 (BTM SCR)	3/4	220	1	30
4400EAF000	1	220	1	Stub Cord (1m)
4400EAF010	1	220	1	10
4400EAF030	1	220	1	30
4400EAF000 (BTM SCR)	1	220	1	Stub Cord (1m)
4400EAF010 (BTM SCR)	1	220	1	10
4400EAF030 (BTM SCR)	1	220	1	30
8400EAF000	2	220	1	Stub Cord (1m)
8400EAF000 (BTM SCR)	2	220	1	Stub Cord (1m)
2.3EHAF000	2	380	3	Stub Cord (1m)
2.3EHAF000 (BTM SCR)	2	380	3	Stub Cord (1m)
3.1EAF000	3	220	1	Stub Cord (1m)
3.1EAF000 (BTM SCR)	3	220	1	Stub Cord (1m)
3.3EHAF000	3	380	3	Stub Cord (1m)
3.3EHAF000 (BTM SCR)	3	380	3	Stub Cord (1m)

Product Notes:

1. Custom cord lengths available. Contact Kasco for details.
2. "AF" models include unit and float; "BTM SCR" models include unit, float, and bottom screen.



NEVER enter the water with electrical equipment connected and / or in operation.





ROBUSTAIRE™ DIFFUSED AERATION

Move & Aerate Large Volumes of Water

Restore your water’s natural ecosystem by adding mixing and movement with RobustAire™. A shore-mounted compressor pushes air through self-weighted lines to a dual-loop diffuser at the bottom of the pond, lake, or tank. This induces oxygen transfer and beneficial mixing to prevent weed overgrowth, algae, unpleasant odors, fish kills, and other issues.

Packages include dual-loop diffuser(s), compressor(s), and compressor cabinet.

Patented AireGuard Cabinet Technology revolutionizes air movement for superior cooling and less maintenance.

Dual-loop diffuser assembly will not clog, includes strain relief, and will land right-side up every time.



Dual-action
Filtering Removes
Dust and Debris

Reliable in
Tough Outdoor
Conditions

Cabinet Design
Ensures Quiet
Operation

Filter Minder
Turns Red When
Cleaning is Needed

ROBUSTAIRE™

SMALL SYSTEMS WITH AIREGUARD CABINET TECHNOLOGY

- Dual-loop diffuser provides high volumes of upward water movement
- Includes 1-3 diffuser assemblies, 1 compressor, and small cabinet
- SureSink Weighted Tubing is not included
- Ideal for small to mid-size ponds and lakes



Small Cabinet with Patented AireGuard Cabinet Technology



Dual-loop Diffuser Provides Efficient Water Movement



Filter Maintenance Indicator for Easy Maintenance



Lifetime Warranty - Diffuser & Cabinet
15-Year Warranty - Tubing
3-Year Warranty - Compressor
2-Year Warranty - Compressor Piston Cups & Cylinders

PART NUMBER	VOLT (V)	CABINET	NUMBER OF DIFFUSERS	COMPRESSOR
RAE1	220	Small Cabinet	1	(1) 1/4HP Compressor
RAE1-NC	220	No-Cabinet	1	(1) 1/4HP Compressor
RAE1-PM	220	Post Mount Cabinet	1	(1) 1/4HP Compressor
RAE2	220	Small Cabinet	2	(1) 1/2HP Compressor
RAE2-NC	220	No-Cabinet	2	(1) 1/2HP Compressor
RAE2-PM	220	Post Mount Cabinet	2	(1) 1/2HP Compressor
RAE3	220	Small Cabinet	3	(1) 1/2HP Compressor
RAE3-NC	220	No-Cabinet	3	(1) 1/2HP Compressor
RAE3-PM	220	Post Mount Cabinet	3	(1) 1/2HP Compressor

- Product Notes:
1. Small Cabinets are ground-mount standard, but can be mounted off the ground on post or similar structure with available mounting bracket. See page 40 for details.
 2. Accommodates .95cm (3/8 in.) tubing as standard but will also work with 1.59cm (5/8 in.) tubing. See page 40.
 3. Kasco recommends 1.59cm (5/8 in.) tubing for any run longer than 91m (300 ft).
 4. Remote manifold systems allow installation long distances from power. These systems include remote valve manifold and valve box.
 5. No-Cabinet systems include mounting bracket with cooling fan.

ROBUSTAIRE™

MEDIUM SYSTEMS WITH AIREGUARD CABINET TECHNOLOGY

- Dual-loop diffuser provides high volumes of upward water movement
- Includes 4-6 diffuser assemblies, 2 compressors, and medium cabinet
- SureSink Weighted Tubing is not included
- Ideal for mid-sized ponds and lakes



Medium Cabinet with Patented AireGuard Cabinet Technology



Dual-loop Diffuser Provides Efficient Water Movement



Filter Maintenance Indicator and External Gauges



Lifetime Warranty - Diffuser & Cabinet
15-Year Warranty - Tubing
3-Year Warranty - Compressor
2-Year Warranty - Compressor Piston Cups & Cylinders

PART NUMBER	VOLT (V)	CABINET	NUMBER OF DIFFUSERS	COMPRESSOR
RAE4	220	Medium Cabinet	4	(2) 1/2HP Compressors
RAE5	220	Medium Cabinet	5	(2) 1/2HP Compressors
RAE6	220	Medium Cabinet	6	(2) 1/2HP Compressors

- Product Notes:
1. Medium Cabinets are ground-mount only. Mount cabinet on a dry, flat surface away from areas that may flood.
 2. Accommodates .95cm (3/8 in.) and 1.59cm (5/8 in.) weighted tubing, but must be ordered separately. See page 40.
 3. Kasco recommends 1.59cm (5/8 in.) tubing for any run longer than 91m (300 ft).
 4. Tubing accessories such as fitting kits and connector kits are available. See page 40.
 5. Remote manifold systems allow installation long distances from power. These systems include remote valve manifold and valve box.



Kasco's experienced team of experts will help you select the right system for your application.

ROBUSTAIRE™

LARGE SYSTEMS WITH AIREGUARD CABINET TECHNOLOGY

- Dual-loop diffuser provides high volumes of upward water movement
- Includes 7-12 diffuser assemblies, 3-4 compressors, and large cabinet
- SureSink Weighted Tubing not included
- Ideal for large recreational or industrial lakes



Large Cabinet with
Patented AireGuard
Cabinet Technology



Dual-loop Diffuser Provides
Efficient Water Movement



Filter Maintenance Indicator
and External Gauges



Lifetime Warranty - Diffuser & Cabinet
15-Year Warranty - Tubing
3-Year Warranty - Compressor
2-Year Warranty - Compressor Piston Cups & Cylinders

PART NUMBER	VOLT (V)	CABINET	NUMBER OF DIFFUSERS	COMPRESSOR
RAE7	220	Large Cabinet	7	(3) 1/2HP Compressors
RAE8	220	Large Cabinet	8	(3) 1/2HP Compressors
RAE9	220	Large Cabinet	9	(3) 1/2HP Compressors
RAE10	220	Large Cabinet	10	(4) 1/2HP Compressors
RAE11	220	Large Cabinet	11	(4) 1/2HP Compressors
RAE12	220	Large Cabinet	12	(4) 1/2HP Compressors

- Product Notes:
1. Large Cabinets are ground-mount only. Mount cabinet on a dry, flat surface away from areas that may flood.
 2. Accommodates 1.59cm (5/8 in.) weighted tubing, but must be ordered separately. See page 40.
 3. Tubing accessories such as fitting kits and connector kits are available. See page 40.
 4. Remote manifold systems allow installation long distances from power. These systems include remote valve manifold and valve box.

ROBUSTAIRE™ SYSTEM COMPARISON

SMALL, MEDIUM, AND LARGE CABINETS

Below is a chart that compares details for Kasco’s Small, Medium, and Large Cabinet Systems. Use these details to determine which system is best for your application.

All cabinets feature quiet operation, external maintenance indicators, easy-to-remove panels, and blend seamlessly with the environment.



SMALL CABINET
(RAE 1-3)



MEDIUM CABINET
(RAE 4-6)



LARGE CABINET
(RAE 7-12)

CABINET DIMENSIONS	(L) 57cm (W) 43.1cm (H) 34cm	(L) 66cm (W) 52.6cm (H) 49.8cm	(L) 106.6cm (W) 52.5cm (H) 49.8cm
NUMBER OF DIFFUSERS	1, 2, or 3	4, 5, or 6	7, 8, 9, 10, 11, or 12
NUMBER AND SIZE OF COMPRESSORS	(1) 1/4 or 1/2HP	(2) 1/2HP	(3 or 4) 1/2HP
TUBING DIAMETER	Tubing ordered separately. Accommodates 0.95cm or 1.59cm tubing.	Tubing ordered separately. Accommodates 0.95cm or 1.59cm tubing.	Tubing ordered separately. Accommodates 0.95cm or 1.59cm tubing.
AIREGUARD CABINET TECHNOLOGY (PATENTED)	✓	✓	✓
TYPICAL APPLICATION	Small to mid-size ponds and lakes	Mid-size ponds and lakes	Large recreational or industrial lakes
CABINET MOUNTING	Ground-mount standard. Mounting bracket available with part number 774300.	Ground-mount only.	Ground-mount only.



Kasco's experienced team of experts will help you select the right system for your application.

TEICHAIRE

COMPRESSORS

- 220V
- Quiet, oil-less piston compressors
- Built for continuous-duty, year-round, large aeration applications

ALL COMPRESSORS INCLUDE:

- Vibration mounts
- Power cord
- Thermal overload protection
- Ramped internal valve plate allowing for restart under load



1/4, 1/2, & 3/4HP
Available



2-Year Warranty



UL & CSA Recognized



CE Marked

COMPRESSOR MODELS

PART NUMBER	HP	WEIGHT (KG)	AMP @ 0 PSI	AMP @ 20 PSI
KM-60HC	1/4	7	1.1	1.6
KM-120HC	1/2	9	1.5	2.0
KM-200HC	3/4	13	3.1	3.7

COMPRESSOR FLOW RATE CHART

DEPTH OF DIFFUSER (m)	KPA	FLOW (m³ PER 24 HOURS)
2	19.4	5,053
3	26.9	7,580
4	35.8	11,369
5	44.8	17,054
6	62.7	28,821
7	71.7	37,467
8	80.6	48,708
9	89.6	63,320



DIFFUSED AERATION

ACCESSORIES

The table below lists accessories and replacement items available for RobustAire Systems.



PART NUMBER	DESCRIPTION	INCLUDES
772100	RobustAire dual-loop diffuser assembly	(1) Diffuser assembly, (1) 3/8 in. (9.55mm) barbed fitting, and (1) 5/8 in. (15.9mm) barbed fitting
774300	RobustAire Small Cabinet mounting racket	(1) Mounting bracket and assembly hardware
771014	Air Filter Paper Element for KM-60 and KM-120 compressors bought before June 2020	-
771018	Air Filter Paper Element for KM-60, KM-120, and KM-200 compressors within RAE systems with remote air intake purchased after June 2020	-
773380	9.55mm (3/8 in.), 30m (100 ft.) roll of weighted tubing	Weighted tubing and fittings to attach to compressor, diffuser assembly, and extending tubing length
773385	9.55mm (3/8 in.), 152m (500 ft.) roll of weighted tubing	Weighted tubing. 152m (500 ft.) rolls do not include fittings
773580	15.9mm (5/8 in.), 30m (100 ft.) roll of weighted tubing	Weighted tubing and fittings to attach to compressor, diffuser assembly, and extending tubing length
773585	15.9mm (5/8 in.), 152m (500 ft.) roll of weighted tubing	Weighted tubing. 152m (500 ft.) rolls do not include fittings
773300	3/8 in. (9.55m) Tube Fitting Kit (included with 3/8 in. x 100 ft. tubing kits)	(1) 3/8 in. x 3/8 in. barbed connector and (2) 3/8 in. hose clamps
773500	5/8 in. (15.9mm) Tube Fitting Kit (included with 5/8 in. x 100 ft. tubing kits)	(1) 5/8 in. x 5/8 in. barbed connector, (2) 3/8 in. x 5/8 in. barbed connectors, (2) 5/8 in. hose clamps, and (2) 3/8 in. hose clamps

UNIT MOUNTING OPTIONS

MOUNTING KITS

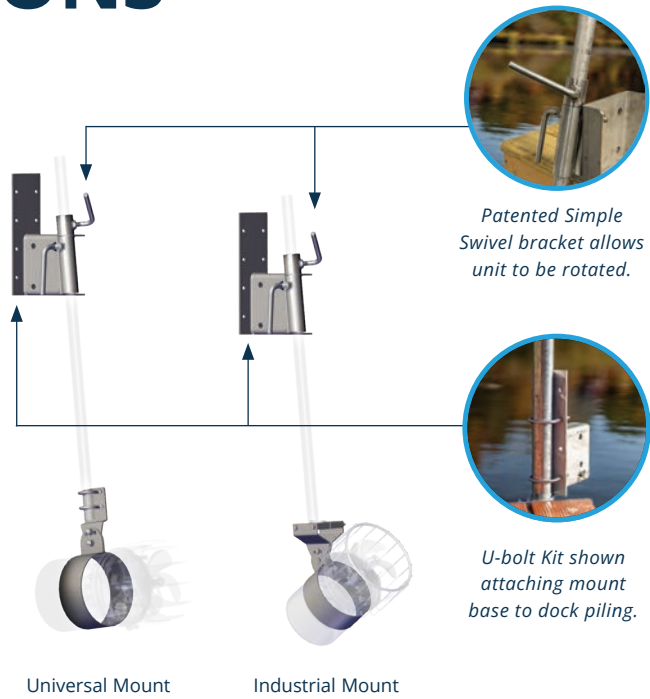
Secure your Kasco AquatiClear™ or De-icer to a dock, pier, walkway, or other in-water structure. Determine your depth, angle, and direction of water flow to achieve desired results. Optional U-bolt Kit allows mount kit to attach to dock piling without drilling into structure. Mounts include a lifetime warranty.

Universal Mount Kits

- For 1/2, 3/4, and 1HP units
- Requires 1 in. / 25 DN nominal pipe, supplied by customer

Industrial Mount Kits

- For 1/2, 3/4, and 1HP units
- Requires 1.5 in. / 40 DN nominal pipe, supplied by customer



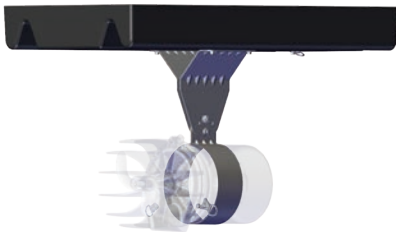
PART NUMBER	DESCRIPTION	UNITS COMPATIBLE
243478	Universal Mount with patented Simple Swivel bracket (Includes all mount assembly hardware)	1/2, 3/4, and 1HP units
243479	Industrial Mount with patented Simple Swivel bracket (Includes all mount assembly hardware)	1/2, 3/4, and 1HP units
997108K	U-bolt Kit (Each kit includes 2 U-bolts and associated hardware)	1/2, 3/4, and 1HP units

- Product Notes:
- Pipes should not exceed 3m and can be threaded or unthreaded (supplied by customer).
 - Universal and Industrial Mounts require (8) .8cm (5/16 in.) customer-supplied lag screws to mount base plate to dock.
 - To install mount without drilling into dock, use available U-bolt Kit instead of lag screws.
 - Industrial Mounts are recommended for units in harsh environments.
 - Universal Mounts require (1) U-bolt Kit, Industrial Mounts require (2) U-bolt Kits.

HORIZONTAL FLOAT

Suspend your Kasco AquatiClear™ below the water’s surface and safely anchor it to shore. Using stainless steel hardware and components, the float accommodates 1/2 and 3/4HP units.

- 3 tie-down loops for secure installation
- Power cord strain relief clip
- 3 angles of unit orientation



PART NUMBER	DESCRIPTION	UNITS COMPATIBLE
213001	Horizontal Float with tie-down loops	1/2 and 3/4HP units

POND PROBIOTICS

BENEFICIAL BACTERIA

Pond Probiotics are a safe, non-chemical approach to water quality management and produces a healthy, balanced ecosystem with its highly concentrated, unique blend of naturally occurring bacteria and enzymes. No irrigation restrictions or permit required.



Available as Quick-Dissolving Powder, Pucks, and Time-releasing Blocks



Simply Toss into Water 13° C or Warmer



Removes Pond Scum and Floating Particles



Eliminates Waste, Dead Grass, and Foul Odors



Safe for People, Pets, and Livestock

PART NUMBER	DESCRIPTION	CONTENTS TREAT
MZ8	(1) 226g WS bag	Up to 1/2 acre-ft.
MZ8C	(40) 226g WS bags (case)	Up to 20 acre-ft.
MZ25	11.34kg bag of bulk powder in pail (no WS bags)	Up to 25 acre-ft.
MZMP7	Muck Pucks - 3.18kg pail with 266 pucks	Up to 10 ft. ² per puck
MZMB5	Muck Block - (1) 2.72kg block	Up to 6 acre ft.

- Product Notes:
- 1. WS = Water soluble bag.
 - 2. One acre-ft. (1 acre of surface area with 1 ft. of depth) = 325,851 gallons.
 - 3. To determine gallons: length (ft.) x width (ft.) x avg. water depth (ft.) x 7.48 = gallons.



BEFORE



AFTER

Quick-Dissolving Powder

For small ponds and water gardens. Reapply every 2-3 weeks.



Muck Pucks

For small or medium ponds, as spot treatments. Reapply every 2-3 weeks.



Muck Blocks

For medium ponds, large ponds, or feeder streams. Reapply every 30 days.



Combine Pond Probiotics with a Kasco aeration or circulation method for maximum water quality results.

WARRANTY INFORMATION

STANDARD WARRANTY

Kasco Marine, Inc. warrants products to be free from defects in material or workmanship under normal use and service. This warranty excludes damage to the equipment from improper handling or installation as well as damage caused by environmental factors (examples include but are not limited to: cuts in or crushing of the power cord, damage to mooring lines and ropes, foreign objects causing damage to props or motor shafts, and improper power feeds). The Kasco Marine, Inc. obligation under this warranty is limited to replacing or repairing, free of charge, any defective part within the warranty period.

All units sent back to the factory or authorized repair center should be accompanied by the repair form, found at kascomarine.com. Customer is responsible to pay shipping charges.

WARRANTY IS VOID IF

1. The product is not maintained according to the maintenance recommendations supplied in owner’s manual.
2. The equipment is returned for repair without the power cord.
3. The unit, control panel, or power cord are altered in any way from the original shipment. Cuts in the power cord are not covered under warranty.
4. The equipment is damaged by unauthorized tampering.
5. The sacrificial zinc anode around the motor shaft shows significant deterioration (not maintained according to recommendations supplied in the owner’s manual).

WARRANTY PERIODS

EJ SERIES FOUNTAINS

- All HP: 2 years

EVFX SERIES FOUNTAINS

- All HP: 2 years

WATERGLOW LIGHTING

- Composite LED: 2 years

AQUATICLEAR™ CIRCULATORS

- All HP: 2 years

DE-ICERS

- All HP: 2 years

ROBUSTAIRE™ DIFFUSED AERATION SYSTEMS

- Diffuser: Lifetime
- Cabinet: Lifetime
- Tubing: 15 years
- Compressor Motor: 3 years
- Compressor Piston Cup: 2 years
- Compressor Cylinder: 2 years

SURFACE AERATORS

- All HP: 2 years

REPLACEMENT (ER) UNITS

- All HP: 2 years

NOTE: Pricing and availability for replacement “ER” units is available in distributor portal accounts.

DISTRIBUTOR TOOLS



Kasco Website
kascomarine.com



Distributor Portal
distributors.kascomarine.com



Online Training



Qualified Lead Routing



Dedicated Customer Service

PRODUCT RETURN, & REPAIR

NEW OR UNUSED PRODUCT RETURN <https://kascomarine.com/products/repair-centers/>

If an item has not entered the water, it can be returned to Kasco:

1. Contact Kasco to receive an RMA number and RMA form.
2. Package the item(s) adequately (original packaging preferred) and return to Kasco with completed RMA form and RMA number on the shipping label or written on the box.

IMPORTANT

- 10% restocking fee will be applied to all returns.
- Additional fees may apply for partial returns.
- An item will not be accepted for return if it has been in the water.
- Kasco will not reimburse for product that was damaged during return shipment.
- Only new, clean, and unused items may be returned for credit.
- Items may not be returned after 6 months from the time of purchase.

REPAIR <https://kascomarine.com/products/repair-centers/>

Equipment can be shipped to Kasco or an authorized service center for a repair estimate. Contact us if you'd like to find an authorized repair center near you. Kasco aims to provide a free cost estimate as soon as possible. After customer approval, the repair can be made in just a few days.

- Please include upper pump housing or wire cage for aerators and De-icers.
- Kasco is not responsible for shipping damage from customer to Kasco.
- Do not send floats. Kasco will charge \$200 for float disassembly and cleaning.
- It is the responsibility of the customer to ship and pay freight to Kasco.

SHIPPING DETAILS

Kasco offers hassle-free logistical support to our customers. While we do accommodate shipment arranged by you or a third party, there are compelling benefits to allowing Kasco's Logistics Team to arrange all your shipments. We have negotiated extremely competitive rates with our preferred carriers and are excited to pass that savings along to you.

Additionally, all shipments arranged by Kasco are FOB destination, insured by us until they reach your location. In the event of loss or damage during shipping, simply notify our Customer Service Team and provide as much detail as possible, including photos of any damage. Once we have confirmed loss or damage, we will ship a replacement and take care of the claim. You can reach our Logistics Team at logistics@kascomarine.com.

FREIGHT QUOTES

Please email freight quotes to matt.f@kascomarine.com and include:

- Shipping address
- Commercial or residential
- Offload or lift gate requirements
- Delivery notification contact info
- Method of Transportation - Sea Freight, Air Freight, or Ground Freight

KASCO PATENTS

Scan the QR code below for a full list of Kasco patent and patent-pending information.





MOVING WATER FORWARD, SINCE 1968

kascomarine.com | +1.715.262.4488 | support@kascomarine.com

800 Deere Road, Prescott, WI U.S.A. 54021