



MOVING WATER FORWARD, SINCE 1968

# 2026 PRICE CATALOG

60HZ RETAIL

[kascomarine.com](https://kascomarine.com)

Fountains | Lighting | Circulators | De-icers | Surface Aerators | Diffused Aerators | Pond Probiotics | Accessories





# MOVING WATER FORWARD

At Kasco, we help people realize the full potential of the water in their world. Our products are the most efficient and effective solutions for improving, protecting, and beautifying water.



# OUR PEOPLE MAKE KASCO THE BEST IN THE BUSINESS

Superior customer service is in our DNA. From design and development to delivery and support, we provide an unwavering commitment to our customers.





# COMPANY HISTORY

For more than 55 years, Kasco has set the industry benchmark for quality products, personalized service, and fast delivery. Learn more about our story below.



**1968**

Marina owner, Bill Skluzacek, developed a de-icing unit to prevent ice from damaging boats in the water over winter. His innovation catches the attention of marina-goers, and Kasco is born.

**1980**

Operations moved to a phone-switching building in St. Croix Beach, MN, and Kasco hired a full-time staff. This building was used as the main office for 15 years.

**1988**

Kasco traveled to Alaska with our De-icers to help rescue whales stuck underneath the ice. The De-icers were able to keep areas of ice open, allowing the whales to swim to safety. The story gained national media attention.

**1988**

The De-icer was modified by adding a float above the propeller, creating Kasco's first surface aerator.



*Above: Founder Bill Skluzacek (right) at the Afton Marina demonstrating an early De-icer unit.*

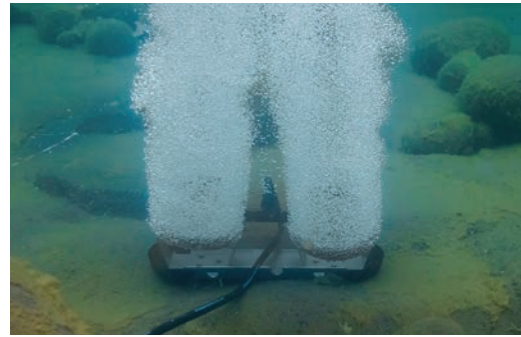






**1989**

Kasco modified the surface aerator by adding a nozzle inside the float, creating our first floating fountains.



**2010**

Kasco introduced RobustAire™ Diffused Aeration Systems. 2022-2024 marked an extensive redesign of the product line.

**2022**

Kasco completed remodeling and expansion projects in 2007, 2013, and 2022, which grew our facility to nearly 100,000 sq. ft.





"As always, the staff at Kasco has been great to work with – from order placement to repairs, they have the answers you're looking for with quick turnaround to boot! Keep up the good work."

– MIKE







# TABLE OF CONTENTS

Moving Water Forward.....2

Why Kasco.....3

Company History .....4

J Series Fountains.....8

    J Series Premium Nozzles..... 16

VFX Series Fountains ..... 18

WaterGlow Lighting ..... 22

    Lighting Selection Guide ..... 23

**NEW** RGBW18 LED..... 24

**NEW** W25 LED ..... 26

    RGB LED ..... 28

    Composite LED..... 30

    Stainless Steel LED..... 32

    RGBW40 LED ..... 34

AquatiClear™ Circulators ..... 36

De-icers ..... 40

Surface Aerators ..... 44

RobustAire™ Diffused Aeration Systems ..... 50

    RobustAire System Comparison ..... 55

Home Series Diffused Aeration Systems ..... 56

    Home Series & Small Cabinet System Comparison..... 59

Diffused Aeration Accessories..... 60

Compressors ..... 61

Pond Probiotics..... 62

Accessories ..... 64

    Unit Mounting Options ..... 65

    Control Panels..... 66

    Extras – Anodes, Props, & More..... 67

Warranty Information ..... 68

Warranty Periods & Distributor Tools ..... 69

MAP, Product Return, & Repair ..... 70

Shipping & Patents ..... 71





*2HP J Series Fountain  
with Spruce Pattern*

# J SERIES

## Elegant Fountain Displays

Kasco J Series Fountains offer dramatic, aesthetically pleasing displays at the best value on the market. Designed with both beauty and function in mind, each package includes multiple twist-and-lock nozzles at no extra charge, allowing you to choose patterns ranging from attention-demanding geysers to elegant 3-tier displays.



Packages include motor unit, 1-piece float, bottom screen, mooring ropes, power cord, display nozzles, and control panel with human-rated, GFCI-protection.

Available in 3/4 - 7.5HP sizes and single and three phase options to fit virtually any application.

Complete packages are ETL Listed to UL and CSA standards for safety.



5 Display  
Patterns **Included**



Impressive  
Heights & Widths



Easily Change  
Nozzles



Snap-on  
Lights Available





# 3/4HP & 1HP

## J SERIES FOUNTAINS

- 120V and 208-240V, single phase options
- 1-piece float blends in with water's surface and is easy to install
- Composite bottom screen helps prevent clogging
- Premium Nozzles available separately (see pages 16-17)
- Manage from shore with included human-rated, GFCI-protected control panel



5 Patterns Included\*



Shallow Operating  
Depths\*\*



Lighting Packages  
Available



2-Year Warranty



ETL Listed to UL  
& CSA Standards

HP	CORD LENGTH	50 FT	100 FT	150 FT	200 FT	250 FT	300 FT	400 FT	500+ FT
120V, SINGLE PHASE PACKAGES									
3/4	PART NUMBER	3400JF050	3400JF100	3400JF150	3400JF200	-	-	-	-
	MSRP	\$2,116	\$2,309	<b>\$2,910</b>	<b>\$3,179</b>	-	-	-	-
1	PART NUMBER	4400JF050	4400JF100	4400JF150	4400JF200	-	-	-	-
	MSRP	\$2,550	<b>\$3,147</b>	<b>\$3,733</b>	<b>\$4,086</b>	-	-	-	-
208-240V, SINGLE PHASE PACKAGES									
3/4	PART NUMBER	3400HJF050	3400HJF100	3400HJF150	3400HJF200	3400HJF250	3400HJF300	3400HJF400	3400HJF500
	MSRP	\$4,245	\$4,408	<b>\$5,186</b>	<b>\$5,433</b>	<b>\$5,543</b>	<b>\$5,672</b>	<b>\$6,266</b>	<b>Inquire</b>
1	PART NUMBER	4400HJF050	4400HJF100	4400HJF150	4400HJF200	4400HJF250	4400HJF300	4400HJF400	4400HJF500
	MSRP	\$4,770	\$4,935	<b>\$5,766</b>	<b>\$6,029</b>	<b>\$6,294</b>	<b>\$6,424</b>	<b>\$6,562</b>	<b>Inquire</b>

\*Packages come with 4 twist-and-lock nozzles (Cypress, Linden, Sequoia, and Birch). The Willow pattern is achieved by operating the fountain without a nozzle.

\*\*3/4HP units operate in as little as 17.5 in. of water. 1HP units operate in as little as 19 in. of water.

### Product Notes:

1. Prices in bold have quick disconnect installed on power cords.
2. 3/4 and 1HP, 120V single phase options include C-25 control panel.
3. 3/4 and 1HP, 208-240V single phase options include C-85 control panel.



NEVER enter the water with  
electrical equipment connected  
and / or in operation.





## CYPRESS

3/4HP	7 ft. H X 17 ft. W
1HP	9 ft. H X 28 ft. W



## LINDEN

3/4HP	9 ft. H X 29 ft. W
1HP	12 ft. H X 31 ft. W



## WILLOW

3/4HP	6.5 ft. H X 21 ft. W
1HP	9 ft. H X 31 ft. W



## SEQUOIA

3/4HP	13 ft. H X 8 ft. W
1HP	18 ft. H X 11 ft. W



## BIRCH

3/4HP	7 ft. H X 5 ft. W
1HP	11 ft. H X 8 ft. W



# 2HP & 3HP

## J SERIES FOUNTAINS

- 208-240V, single and three phase options
- 1-piece float blends in with water's surface and is easy to install
- Stainless steel components provide increased performance and longevity
- Premium Nozzles available separately (see pages 16-17)
- Manage from shore with included human-rated, GFCI-protected control panel



5 Patterns Included\*



Shallow Operating  
Depths\*\*



Lighting Packages  
Available



3-Year Warranty - 2HP Units\*\*\*  
5-Year Warranty - 3HP Units



ETL Listed to UL  
& CSA Standards

HP	CORD LENGTH	50 FT	100 FT	150 FT	200 FT	250 FT	300 FT	400 FT	500+ FT
208-240V, SINGLE PHASE PACKAGES									
2	PART NUMBER	8400JF050	8400JF100	8400JF150	8400JF200	8400JF250	8400JF300	8400JF400	8400JF500
	MSRP	\$6,293	<b>\$6,865</b>	<b>\$7,004</b>	<b>\$7,193</b>	<b>\$7,415</b>	<b>\$8,444</b>	<b>\$12,452</b>	<b>Inquire</b>
3	PART NUMBER	3.1JF050	3.1JF100	3.1JF150	3.1JF200	3.1JF250	3.1JF300	3.1JF400	3.1JF500
	MSRP	\$7,422	<b>\$7,935</b>	<b>\$8,124</b>	<b>\$8,883</b>	<b>\$9,508</b>	<b>\$9,891</b>	<b>\$12,782</b>	<b>Inquire</b>
208-240V, THREE PHASE PACKAGES									
2	PART NUMBER	2.3JF050	2.3JF100	2.3JF150	2.3JF200	2.3JF250	2.3JF300	2.3JF400	2.3JF500
	MSRP	<b>\$10,767</b>	<b>\$11,062</b>	<b>\$11,426</b>	<b>\$11,745</b>	<b>\$12,491</b>	<b>\$13,083</b>	<b>\$13,849</b>	<b>Inquire</b>
3	PART NUMBER	3.3JF050	3.3JF100	3.3JF150	3.3JF200	3.3JF250	3.3JF300	3.3JF400	3.3JF500
	MSRP	<b>\$11,181</b>	<b>\$11,474</b>	<b>\$11,841</b>	<b>\$12,498</b>	<b>\$12,905</b>	<b>\$14,404</b>	<b>\$15,486</b>	<b>Inquire</b>

\*Packages include 5 twist-and-lock nozzles (Balsam, Linden, Birch, Spruce, and Redwood).

\*\*2HP units operate in as little as 20 in. of water. 3HP units operate in as little as 24 in. of water.

\*\*\*Extended warranty available on 2HP units.

### Product Notes:

1. Prices in bold have quick disconnect installed on power cords.
2. 2 and 3HP, single phase units utilize stainless steel top and bottom screens, and composite motor top and legs.
3. 2 and 3HP, three phase units utilize stainless steel top and bottom screens, motor top, legs, and stub cord protective sleeving.
4. 2HP, single phase options include C-85 control panel. 3HP, single phase options include C-95 control panel.
5. 2 and 3HP, three phase units include CF-3235 control panel.
6. 460-480V, three phase options available for special order in approved locations only. Contact Kasco for details.



NEVER enter the water with  
electrical equipment connected  
and / or in operation.





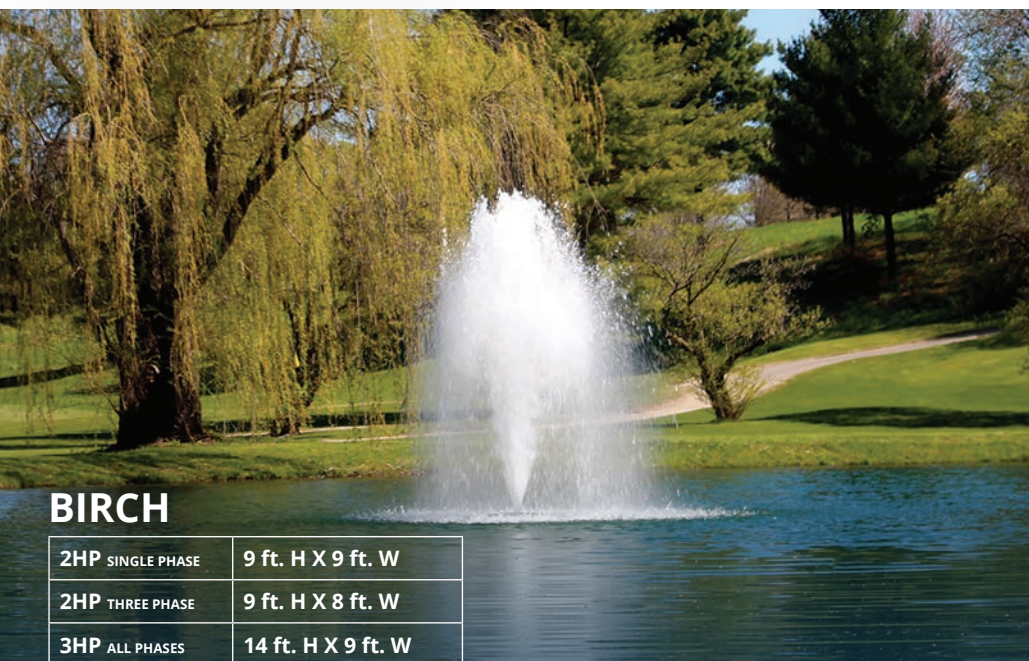
## BALSAM

2HP ALL PHASES	14 ft. H X 32 ft. W
3HP ALL PHASES	19 ft. H X 34 ft. W



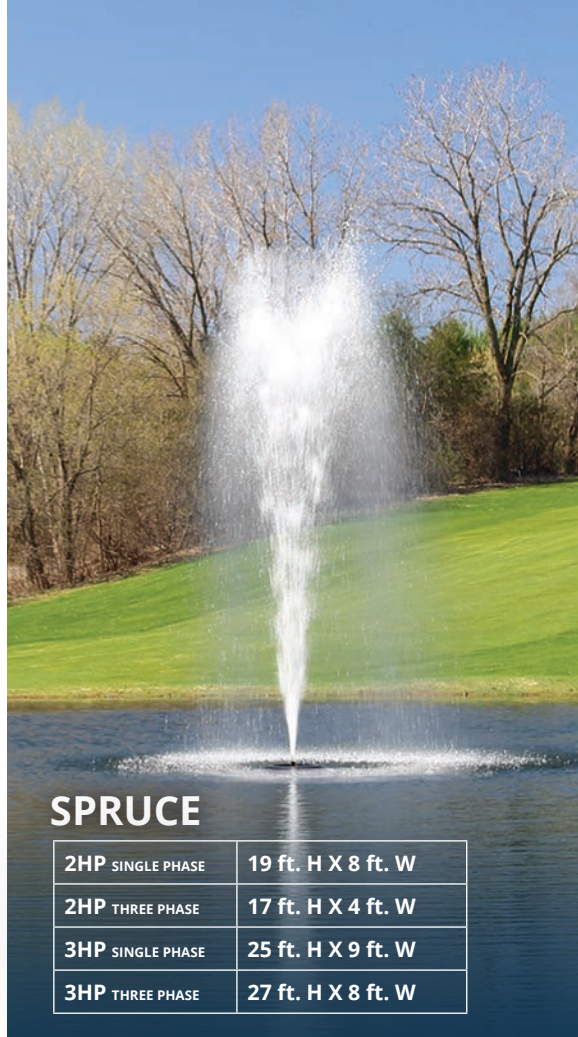
## LINDEN

2HP SINGLE PHASE	18 ft. H X 32 ft. W
2HP THREE PHASE	14 ft. H X 30 ft. W
3HP ALL PHASES	20.5 ft. H X 38 ft. W



## BIRCH

2HP SINGLE PHASE	9 ft. H X 9 ft. W
2HP THREE PHASE	9 ft. H X 8 ft. W
3HP ALL PHASES	14 ft. H X 9 ft. W



## SPRUCE

2HP SINGLE PHASE	19 ft. H X 8 ft. W
2HP THREE PHASE	17 ft. H X 4 ft. W
3HP SINGLE PHASE	25 ft. H X 9 ft. W
3HP THREE PHASE	27 ft. H X 8 ft. W



## REDWOOD

2HP ALL PHASES	22 ft. H X 6 ft. W
3HP ALL PHASES	20 ft. H X 4 ft. W



# 5HP & 7.5HP

## J SERIES FOUNTAINS

- 208-240V, 5HP available as single and three phase options
- 208-240V, 7.5HP available as three phase only
- 1-piece float blends in with water’s surface and is easy to install
- Stainless steel components provide increased performance and longevity
- Premium Nozzles available separately (see pages 16-17)
- Manage from shore with included human-rated, GFCI-protected control panel



5 Patterns Included\*



Shallow Operating  
Depths\*\*



Lighting Packages  
Available



5-Year Warranty



ETL Listed to UL  
& CSA Standards

HP	CORD LENGTH	100 FT	150 FT	200 FT	250 FT	300 FT	400 FT	500+ FT
208-240V, SINGLE PHASE PACKAGES								
5	PART NUMBER	5.1JF100	5.1JF150	5.1JF200	5.1JF250	5.1JF300	5.1JF400	5.1JF500
	MSRP	<b>\$9,285</b>	<b>\$10,372</b>	<b>\$11,180</b>	<b>\$12,694</b>	<b>\$15,161</b>	<b>\$16,402</b>	<b>Inquire</b>
208-240V, THREE PHASE PACKAGES								
5	PART NUMBER	5.3JF100	5.3JF150	5.3JF200	5.3JF250	5.3JF300	5.3JF400	5.3JF500
	MSRP	<b>\$11,948</b>	<b>\$12,699</b>	<b>\$13,574</b>	<b>\$14,052</b>	<b>\$17,406</b>	<b>\$18,698</b>	<b>Inquire</b>
7.5	PART NUMBER	7.3JF100	7.3JF150	7.3JF200	7.3JF250	7.3JF300	7.3JF400	7.3JF500
	MSRP	<b>\$12,254</b>	<b>\$13,272</b>	<b>\$13,922</b>	<b>\$16,047</b>	<b>\$17,252</b>	<b>\$20,251</b>	<b>Inquire</b>

\*Packages include 5 twist-and-lock nozzles (Balsam, Linden, Birch, Spruce, and Redwood).  
 \*\*5HP units operate in as little as 26 in. of water. 7.5HP units operate in as little as 28 in. of water.

- Product Notes:
1. Prices in bold have quick disconnect installed on power cords.
  2. All 5 and 7.5HP units utilize stainless steel top and bottom screens, motor top, legs, and protective stub cord sleeving.
  3. 5HP, single phase units include C-95 control panel. 5HP, three phase units include CF-3235 control panel.
  4. 7.5HP, three phase units include CF-3075 control panel.
  5. 460-480V, three phase options available for special order in approved locations only. Contact Kasco for details.



NEVER enter the water with  
electrical equipment connected  
and / or in operation.





## BALSAM

5HP ALL PHASES	18 ft. H X 34 ft. W
7.5HP ALL PHASES	21 ft. H X 36 ft. W



## LINDEN

5HP SINGLE PHASE	20 ft. H X 41 ft. W
5HP THREE PHASE	19 ft. H X 41 ft. W
7.5HP ALL PHASES	26 ft. H X 46 ft. W



## BIRCH

5HP SINGLE PHASE	22 ft. H X 11 ft. W
5HP THREE PHASE	21 ft. H X 9 ft. W
7.5HP ALL PHASES	26 ft. H X 11 ft. W



## SPRUCE

5HP SINGLE PHASE	29 ft. H X 10 ft. W
5HP THREE PHASE	32 ft. H X 10 ft. W
7.5HP ALL PHASES	34 ft. H X 12 ft. W



## REDWOOD

5HP ALL PHASES	32 ft. H X 6 ft. W
7.5HP ALL PHASES	36 ft. H X 8 ft. W

# PREMIUM NOZZLES

## FOR J SERIES FOUNTAINS

Further define your J Series experience with a Premium Nozzle, available for all HP sizes. Purchased separately, Kasco Premium Nozzles generate crisp and distinct streams of water, delivering dramatic and captivating displays.



Fern



Available for All  
J Series Fountains



4 Pattern Choices for  
3/4 & 1HP Units



6 Pattern Choices for  
2, 3, 5, & 7.5HP Units



Twist-and-lock  
Installation



Purchased  
Separately



Mighty Oak



Magnolia



Mahogany



Madrone



Palm

PATTERN	3/4 & 1HP PART NUMBERS & DIMENSIONS (H x W) (FT)				2, 3, 5, & 7.5HP PART NUMBERS & DIMENSIONS (H x W) (FT)					
	SINGLE PHASE									
	PART #	3/4HP	1HP	MSRP	PART #	2HP	3HP	5HP	7.5HP	MSRP
Mighty Oak	431335K	10 x 24	13 x 34	\$75	841335K	14.5 x 40	19.5 x 51	24.5 x 58	-	\$325
Magnolia	431325K	9 x 29	11.5 x 37	\$75	841325K	14 x 35	18 x 60	23.5 x 72	-	\$325
Mahogany	431345K	11.5 x 28	14 x 34	\$75	841345K	12 x 43	19 x 48	28 x 64	-	\$325
Madrone	431330K	11.5 x 28	14 x 35	\$75	841330K	15 x 43	20 x 59	24 x 70	-	\$325
Palm	-	-	-	-	841320K	12 x 26	16 x 36	20.5 x 40	-	\$325
Fern	-	-	-	-	841315K	12 x 36	16 x 54	23 x 68	-	\$325
THREE PHASE										
Mighty Oak	-	-	-	-	841335K	14.5 x 40	19.5 x 51	24.5 x 58	27 x 60	\$325
Magnolia	-	-	-	-	841325K	13.5 x 40	18 x 60	23.5 x 72	26 x 80	\$325
Mahogany	-	-	-	-	841345K	14.5 x 35.5	20 x 47	25 x 55	29 x 72	\$325
Madrone	-	-	-	-	841330K	15 x 43	20 x 51	25 x 57	26 x 75	\$325
Palm	-	-	-	-	841320K	12 x 26	16 x 36	20.5 x 40	22 x 42	\$325
Fern	-	-	-	-	841315K	12 x 36	19 x 53	23 x 59	24 x 66	\$325





**MIGHTY OAK**



**MAGNOLIA**



**MAHOGANY**



**MADRONE**



**PALM**



**FERN** *Best in Narrow Ponds*





*1HP VFX Series  
Fountain*

# VFX SERIES

## The Best of Beauty and Aeration

Kasco VFX Series Fountains are the choice for an elegant display with superior aeration benefits. These high-flow units are efficient, easy to install and operate, and ideal for many applications.

Packages include motor unit, 1-piece float, bottom screen, mooring ropes, power cord, and control panel with human-rated, GFCI-protection.

Available in 1/2 - 5HP sizes and single and three phase options to fit virtually any application.

Complete packages are ETL Listed to UL and CSA standards for safety.







Classic  
V-shaped Pattern



Combines  
Beauty & Aeration



Snap-on  
Lights Available



1-Piece Float  
for Easy Assembly





# 1/2HP, 3/4HP, & 1HP

## VFX SERIES FOUNTAINS

- 120V and 208-240V, single phase options
- 1-piece float blends in with water's surface and is easy to install
- Bottom screen helps prevent clogging
- Manage from shore with included human-rated, GFCI-protected control panel



Classic V-shaped  
Pattern



Shallow Operating  
Depths\*



Lighting Packages  
Available



2-Year Warranty



ETL Listed to UL  
& CSA Standards

HP	DISPLAY		CORD LENGTH	50 FT	100 FT	150 FT	200 FT	250 FT	300 FT	400 FT	500+ FT
	H (FT)	W (FT)									
120V, SINGLE PHASE PACKAGES											
1/2	5	15	PART #	2400VFX050	2400VFX100	2400VFX150	2400VFX200	-	-	-	-
			MSRP	\$1,762	\$1,945	\$2,530	\$2,792	-	-	-	-
3/4	5.5	21	PART #	3400VFX050	3400VFX100	3400VFX150	3400VFX200	-	-	-	-
			MSRP	\$1,957	\$2,151	\$2,776	\$3,059	-	-	-	-
1	8	26	PART #	4400VFX050	4400VFX100	4400VFX150	4400VFX200	-	-	-	-
			MSRP	\$2,240	\$2,864	\$3,445	\$3,897	-	-	-	-
208-240V, SINGLE PHASE PACKAGES											
3/4	5.5	21	PART #	3400HVFX050	3400HVFX100	3400HVFX150	3400HVFX200	3400HVFX250	3400HVFX300	3400HVFX400	3400HVFX500
			MSRP	\$3,912	\$4,077	\$4,843	\$5,090	\$5,207	\$5,332	\$5,912	Inquire
1	8	26	PART #	4400HVFX050	4400HVFX100	4400HVFX150	4400HVFX200	4400HVFX250	4400HVFX300	4400HVFX400	4400HVFX500
			MSRP	\$4,196	\$4,345	\$5,128	\$5,380	\$5,637	\$5,768	\$6,322	Inquire

\*1/2HP units operate in as little as 17.5 in. of water. 3/4HP units operate in as little as 17.5 in. of water. 1HP units operate in as little as 19 in. of water.

### Product Notes:

1. Prices in bold have quick disconnect installed on power cords.
2. 1/2, 3/4, and 1HP, 120V, single phase units include C-25 control panel.
3. 3/4 and 1HP, 208-240V, single phase units include C-85 control panel.



NEVER enter the water with  
electrical equipment connected  
and / or in operation.



# 2HP & 5HP

## VFX SERIES FOUNTAINS



- 208-240V, single and three phase options
- 1-piece float blends in with water’s surface and is easy to install
- Top and bottom screens help prevent clogging
- Manage from shore with included human-rated, GFCI-protected control panel



Classic V-shaped  
Pattern



Shallow Operating  
Depths\*



Lighting Packages  
Available



3-Year Warranty\*\*



ETL Listed to UL  
& CSA Standards

HP	DISPLAY		CORD LENGTH	50 FT	100 FT	150 FT	200 FT	250 FT	300 FT	400 FT	500+ FT
	H (FT)	W (FT)									
208-240V, SINGLE PHASE PACKAGES											
2	8	32	PART #	8400VFX050	8400VFX100	8400VFX150	8400VFX200	8400VFX250	8400VFX300	8400VFX400	8400VFX500
			MSRP	\$6,633	\$7,216	\$7,404	\$7,602	\$7,840	\$8,859	\$12,730	Inquire
5	9	34	PART #	-	5.1VFX100	5.1VFX150	5.1VFX200	5.1VFX250	5.1VFX300	5.1VFX400	5.1VFX500
			MSRP	-	\$9,361	\$10,321	\$11,062	\$12,374	\$14,576	\$16,718	Inquire
208-240V, THREE PHASE PACKAGES											
2	8	32	PART #	2.3VFX050	2.3VFX100	2.3VFX150	2.3VFX200	2.3VFX250	2.3VFX300	2.3VFX400	2.3VFX500
			MSRP	\$10,502	\$10,730	\$11,160	\$11,384	\$12,105	\$12,700	\$13,777	Inquire
5	9	34	PART #	-	5.3VFX100	5.3VFX150	5.3VFX200	5.3VFX250	5.3VFX300	5.3VFX400	5.3VFX500
			MSRP	-	\$11,731	\$12,477	\$13,741	\$14,339	\$17,641	\$19,034	Inquire

\*2HP units operate in as little as 20 in. of water. 5HP units operate in as little as 26 in. of water.  
\*\*Extended warranty available on 2HP and 5HP units.

Product Notes:

1. Prices in bold have quick disconnect installed on power cords.
2. 2HP, single phase units include C-85 control panel. 5HP, single phase units include C-95 control panel.
3. 2 and 5HP, three phase units include CF-3235 control panel.
4. Three phase units are constructed with a durable stainless steel motor top for reliable performance in all environments.
5. Mesh screen (included) around bottom screen further helps prevent clogging.
6. 460-480V, three phase option available for special order in approved locations only. Contact Kasco for details.



NEVER enter the water with  
electrical equipment connected  
and / or in operation.



# WATERGLOW LIGHTING

## Add Beauty to Your Evening Displays

Kasco WaterGlow Lighting dramatically illuminates your fountain or surface aerator pattern during the evening hours. Available in composite or stainless steel housings and with several color options, these versatile LED lights are a perfect addition to your display.

All lighting fixtures feature a durable, high-strength housing for watertight operation.

Easy-to-install, snap-on light clips included with RGB LED, Composite LED, Stainless Steel LED, RGBW18 LED and W25 LED systems.

Multiple sizes and styles available to fit fountains and surface aerators.

*2HP Surface Aerator with  
RGBW18 LED Light Kit*





# LIGHTING SELECTION GUIDE

Below are lighting system recommendations for fountains and surface aerators based on unit size (HP). Background light, pattern, and fixture angle can affect visual experience. Using these recommendations will help ensure your pattern is illuminated to the fullest extent possible.



LIGHTING SYSTEM			RECOMMENDED UNIT SIZE (HP)												
LIGHT SYSTEM	MODEL	NUMBER OF FIXTURES	FOUNTAINS							SURFACE AERATORS					
			1/2	3/4	1	2	3	5	7.5	1/2	3/4	1	2	3	5
NEW RGBW18 LED	LED2RGBW18	2	✓	✓	✓					✓	✓				
NEW RGBW18 LED	LED3RGBW18	3	✓	✓	✓	✓	✓			✓	✓	✓	✓**	✓**	
NEW RGBW18 LED	LED4RGBW18	4				✓	✓	✓	✓				✓*, **	✓**	✓**
NEW W25 LED	LED2W25	2	✓	✓	✓					✓	✓				
NEW W25 LED	LED3W25	3	✓	✓	✓	✓	✓	✓		✓	✓	✓	✓	✓	
NEW W25 LED	LED4W25	4				✓	✓	✓	✓				✓*, **	✓**	✓**
RGBW40 LED	RGBW2SW40 RGBW2LW40	2				✓									
RGBW40 LED	RGBW3SW40 RGBW3LW40	3				✓	✓	✓	✓				✓*	✓	✓
RGBW40 LED	RGBW4SW40 RGBW4LW40	4						✓	✓						
Stainless Steel LED	LED3S19	3				✓	✓	✓		✓	✓		✓*	✓	
Stainless Steel LED	LED6S19	6					✓	✓	✓					✓	
RGB LED	RGB3C5	3	✓	✓	✓					✓	✓	✓			
RGB LED	RGB6C5	6				✓	✓						✓	✓	✓
Composite LED	LED3C11	3	✓	✓	✓					✓	✓	✓			
Composite LED	LED6C11	6				✓	✓	✓					✓	✓	✓

\*Must use the 3HP and 5HP surface aerator 3-piece sectional float.

\*\*Requires the 6-light kit adapter (PN 840306).

## Product Notes:

1. If adding a Composite LED, Stainless Steel LED, RGB LED, RGBW18 LED, or W25 LED light kit to a 2, 3, or 5HP surface aerator, an adapter is needed to accommodate the 3-piece float. If ordering a 3-light kit, a 3-light kit adapter is needed. If ordering a 6-light kit, a 6-light kit adapter is needed. See page 67 for part numbers and pricing.



**NEW**

# RGBW18 LED

## RGBW COLOR & CONTROL

- Includes fixtures, brackets, snap-on clips, and power cord with quick disconnect
- Seamless control through mobile device and app
- 2-, 3-, and 4-fixture kits available in multiple power cord lengths
- Runs on 120Vac power



Vibrant RGBW  
Color Output



Watertight Composite  
Housings



Up to 400 ft. of  
Operational Distance



18 Watts and 1,272  
Lumens Per Fixture



3-Year Warranty

CORD LENGTH	50 FT	100 FT	150 FT	200 FT	250 FT	300 FT	400 FT	500 FT
2-FIXTURE KITS								
PART NUMBER	LED2RGBW18-050	LED2RGBW18-100	LED2RGBW18-150	LED2RGBW18-200	LED2RGBW18-250	LED2RGBW18-300	LED2RGBW18-400	LED2RGBW18-500
Contact Kasco for Pricing.								
3-FIXTURE KITS								
PART NUMBER	LED3RGBW18-050	LED3RGBW18-100	LED3RGBW18-150	LED3RGBW18-200	LED3RGBW18-250	LED3RGBW18-300	LED3RGBW18-400	LED3RGBW18-500
Contact Kasco for Pricing.								
4-FIXTURE KITS								
PART NUMBER	LED4RGBW18-050	LED4RGBW18-100	LED4RGBW18-150	LED4RGBW18-200	LED4RGBW18-250	LED4RGBW18-300	LED4RGBW18-400	LED4RGBW18-500
Contact Kasco for Pricing.								

### Product Notes:

1. See Lighting Selection Guide on page 23 for lighting recommendations per HP.
2. All kits include a control fixture with an antenna to increase signal strength. This should be placed on the float like the regular light fixtures.
3. Fixtures are daisy-chained together with a single, submersible quick disconnect.
4. Protective cord sleeving included on each fixture. 3 ft. of sleeving included on main power cord(s).
5. Fixtures cannot be serviced in the field and individual fixtures cannot be swapped.
6. RGBW18 3- and 4-fixture kits require a 6-light kit adapter (PN 840306). See page 67.
7. RGBW18 4-fixture kits must use the 3HP and 5HP surface aerator 3-piece sectional float.



3HP J Series Fountain with Mighty Oak  
Premium Nozzle & RGBW18 LED Light Kit



Snap-on Clips  
for Easy Installation



Exciting Pre-set  
Color Effects



Great for  
Fountains or  
Surface Aerators



Integrate with  
Amazon Alexa or  
Google Assistant



Blends red, green, blue, and white for many color options





**NEW**

# W25 LED

## SIMPLE, CLASSIC BRILLIANCE

- Includes fixtures, brackets, snap-on clips, and power cord with quick disconnect
- No controller required allows for plug and play operation
- 2-, 3-, and 4-fixture kits available in multiple power cord lengths
- Runs on 120Vac power



Cool, Radiant Glow



Watertight Composite Housings



Power Cord Lengths up to 500 ft.



25 Watts and 3,569 Lumens Per Fixture



3-Year Warranty

CORD LENGTH	50 FT	100 FT	150 FT	200 FT	250 FT	300 FT	400 FT	500 FT
2-FIXTURE KITS								
PART NUMBER	LED2W25-050	LED2W25-100	LED2W25-150	LED2W25-200	LED2W25-250	LED2W25-300	LED2W25-400	LED2W25-500
Contact Kasco for Pricing.								
3-FIXTURE KITS								
PART NUMBER	LED3W25-050	LED3W25-100	LED3W25-150	LED3W25-200	LED3W25-250	LED3W25-300	LED3W25-400	LED3W25-500
Contact Kasco for Pricing.								
4-FIXTURE KITS								
PART NUMBER	LED4W25-050	LED4W25-100	LED4W25-150	LED4W25-200	LED4W25-250	LED4W25-300	LED4W25-400	LED4W25-500
Contact Kasco for Pricing.								

### Product Notes:

1. See Lighting Selection Guide on page 23 for lighting recommendations per HP.
2. Fixtures are daisy-chained together with a single, submersible quick disconnect.
3. Protective cord sleeving included on each fixture. 3 ft. of sleeving included on main power cord(s).
4. Fixtures cannot be serviced in the field and individual fixtures cannot be swapped.
5. W25 4-fixture kits require a 6-light kit adapter (PN 840306). See page 67.
6. W25 4-fixture kits must use the 3HP and 5HP surface aerator 3-piece sectional float.





Snap-on Clips  
for Easy Installation



4000K White Light  
for Full Illumination



Great for  
Fountains or  
Surface Aerators



Plug and Play  
Operation



4000K White Light LED





# RGB LED

## A CUSTOMIZED NIGHTTIME EXPERIENCE

- Packages include light fixtures, brackets, snap-on clips, power cord, waterproof disconnect caps, remote control, and RGB control panel
- 3- and 6-fixture kits available in multiple power cord lengths
- Runs on 24Vdc power



9 Vibrant  
Color Choices



Durable Composite Housings  
for Watertight Operation



Power Cord Lengths  
up to 400 ft.



5 Watts Per Fixture

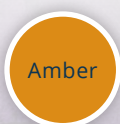
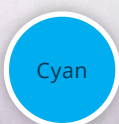
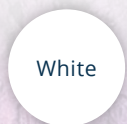


2-Year Warranty

CORD LENGTH	50 FT	100 FT	150 FT	200 FT	250 FT	300 FT	400 FT
3-FIXTURE KITS							
PART NUMBER	RGB3C5-050	RGB3C5-100	RGB3C5-150	RGB3C5-200	RGB3C5-250	RGB3C5-300	RGB3C5-400
MSRP	\$1,535	\$1,753	\$1,971	\$2,185	\$2,418	\$3,120	\$4,048
6-FIXTURE KITS							
PART NUMBER	RGB6C5-050	RGB6C5-100	RGB6C5-150	RGB6C5-200	RGB6C5-250	RGB6C5-300	RGB6C5-400
MSRP	\$2,633	\$3,090	\$3,548	\$4,007	\$4,481	\$5,997	\$7,509

### Product Notes:

1. See Lighting Selection Guide on page 23 for lighting recommendations per HP.
2. Waterproof disconnect caps allow customers to leave the main power cord in the water when fixtures are pulled for maintenance or storage.
3. Main power cord does not have its own quick disconnect.
4. Protective cord sleeving included on each fixture. 3 ft. of sleeving included on main power cord(s).
5. 6-fixture kits ship with 2 power cords, each with 3 fixtures.
6. When adding a RGB LED light kit to a 2, 3, and 5HP surface aerator, be sure to also order a 3-light kit adapter or 6-light kit adapter. See page 67.
7. Universal Lighting available for non-Kasco units. Contact Kasco for details.







Snap-on Clips  
for Easy Installation



Vibrant Color  
from All Angles



Great for  
Fountains or  
Surface Aerators



Set to Music  
in Rhythmic  
Patterns





# COMPOSITE LED

## THE PERFECT VIBRANT SETTING

- Includes light fixtures, brackets, snap-on clips, power cord, waterproof disconnect caps, colored lenses, and lens caps
- 3- and 6-fixture kits available in multiple power cord lengths
- Runs on 120Vac power



Displays White and Includes Red, Green, Blue, and Amber Lenses



Durable Composite Fixtures for Watertight Operation



Power Cord Lengths up to 500 ft.



11 Watts and 910 Lumens Per Fixture

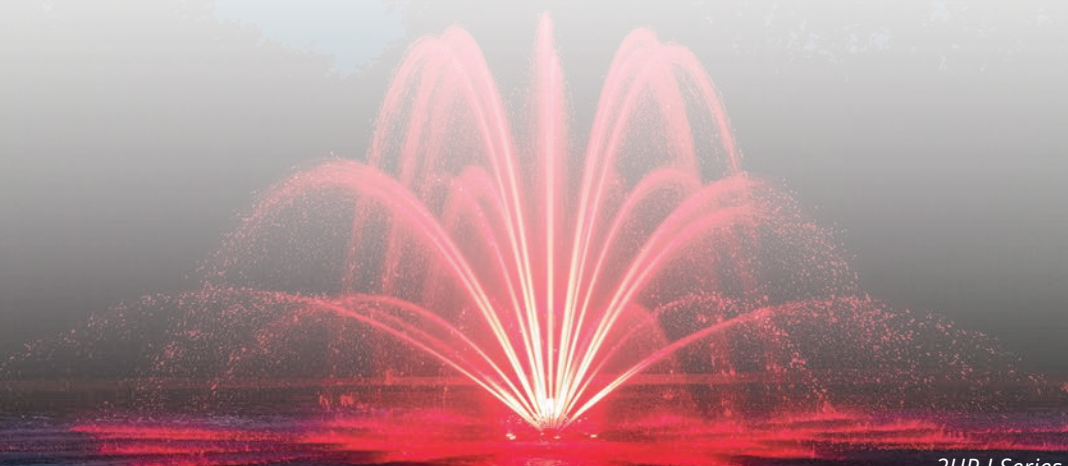


2-Year Warranty


CORD LENGTH	50 FT	100 FT	150 FT	200 FT	250 FT	300 FT	400 FT	500 FT
3-FIXTURE KITS								
PART NUMBER	LED3C11-050	LED3C11-100	LED3C11-150	LED3C11-200	LED3C11-250	LED3C11-300	LED3C11-400	LED3C11-500
MSRP	\$922	\$1,016	\$1,103	\$1,200	\$1,327	\$1,412	\$1,552	\$2,130
6-FIXTURE KITS								
PART NUMBER	LED6C11-050	LED6C11-100	LED6C11-150	LED6C11-200	LED6C11-250	LED6C11-300	LED6C11-400	LED6C11-500
MSRP	\$1,747	\$1,827	\$1,918	\$2,014	\$2,113	\$2,222	\$2,385	\$2,717

### Product Notes:

1. See Lighting Selection Guide on page 23 for lighting recommendations per HP.
2. Waterproof disconnect caps allow customers to leave the main power cord in the water when fixtures are pulled for maintenance or storage.
3. Main power cord does not have its own quick disconnect.
4. Protective cord sleeving included on each fixture. 3 ft. of sleeving included on main power cord(s).
5. When adding a Composite LED light kit to a 2, 3, and 5HP surface aerator, be sure to also order a 3-light kit adapter or 6-light kit adapter. See page 67.
6. Universal Lighting available for non-Kasco units. Contact Kasco for details.







Snap-on Clips  
for Easy Installation



Vibrant Color  
from All Angles



Great for  
Fountains or  
Surface Aerators



Power Cord  
Lengths up to  
500 ft.





# STAINLESS STEEL LED

## ILLUMINATION IN ALL ENVIRONMENTS

- Includes light fixtures, brackets, snap-on clips, power cord with quick disconnect, colored lenses, and lens caps
- 3- and 6-fixture kits available in multiple power cord lengths
- Runs on 120Vac power



Displays White and Includes Red, Green, Blue, and Amber Lenses



Durable Stainless Steel Fixtures for Watertight Operation



19 Watts and 1,700 Lumens Per Fixture



3-Year Warranty



UL / CSA Listed

CORD LENGTH	50 FT	100 FT	150 FT	200 FT	250 FT	300 FT	400 FT	500 FT
3-FIXTURE KITS								
PART NUMBER	LED3S19-050	LED3S19-100	LED3S19-150	LED3S19-200	LED3S19-250	LED3S19-300	LED3S19-400	LED3S19-500
MSRP	\$2,228	\$2,316	\$2,412	\$2,508	\$2,596	\$2,713	\$2,924	\$3,240
6-FIXTURE KITS								
PART NUMBER	LED6S19-050	LED6S19-100	LED6S19-150	LED6S19-200	LED6S19-250	LED6S19-300	LED6S19-400	LED6S19-500
MSRP	\$4,038	\$4,142	\$4,248	\$4,355	\$4,474	\$4,596	\$4,789	\$4,885

- Product Notes:
1. See Lighting Selection Guide on page 23 for lighting recommendations per HP.
  2. Fixtures are daisy-chained together for easy installation.
  3. Quick disconnect is included on main power cord.
  4. Protective cord sleeving included on each fixture. 3 ft. of sleeving included on main power cord(s).
  5. Universal Lighting available for non-Kasco units. Contact Kasco for details.
  6. When adding a Stainless Steel LED light kit to a 2, 3, and 5HP surface aerator, be sure to also order a 3-light kit adapter or 6-light kit adapter. See page 67.
  7. S19 3-fixture kits must use the 3HP and 5HP surface aerator 3-piece sectional float.







Snap-on Clips  
for Easy Installation



Vibrant Color  
from All Angles



Great for  
Fountains or  
Surface Aerators



Power Cord  
Lengths up to  
500 ft.





# RGBW40 LED

## DELUXE DMX LIGHTING SYSTEM

- Includes fixtures, brackets, power cord with quick disconnect, and control panel
- 2-, 3-, and 4-fixture kits available in multiple power cord lengths
- Runs on 120Vac power



36 pre-programmed colors  
& DMX controllable



Durable Stainless Steel Fixtures  
for Watertight Operation



40 Watts and 2,376  
Lumens Per Fixture



5-Year Warranty



UL / CSA Listed

### WI-FI ENABLED PACKAGES

Use the touchpad inside the panel or download the app\* on your mobile device to control color, sequencing patterns, and power.

### PUSH-BUTTON PACKAGES

Use the push-button controller inside the panel or included short-range remote to cycle through color, sequencing patterns, and power.

CONTROL OPTION	MODEL	CORD LENGTH						
		100 FT	150 FT	200 FT	250 FT	300 FT	400 FT	500 FT
2-FIXTURE KITS								
Wi-Fi	RGBW2SW40	\$6,479	\$6,706	\$6,900	\$7,116	\$7,344	\$7,764	\$8,196
Push-Button	RGBW2SL40							
3-FIXTURE KITS								
Wi-Fi	RGBW3SW40	\$7,865	\$8,093	\$8,287	\$8,503	\$8,719	\$9,151	\$9,583
Push-Button	RGBW3SL40							
4-FIXTURE KITS								
Wi-Fi	RGBW4SW40	\$9,353	\$9,580	\$9,775	\$9,991	\$10,207	\$11,575	\$12,243
Push-Button	RGBW4SL40							

\*See manual for information on the app needed for the Wi-Fi enabled packages.

#### Product Notes:

1. See Lighting Selection Guide on page 23 for lighting recommendations per HP.
2. Part number is the model combined with cord length (ex. RGBW2SW40-100).
3. Fixtures are daisy-chained together for easy installation.
4. Quick disconnect is included on main power cord.
5. Protective cord sleeving included on each fixture. 3 ft. of sleeving included on main power cord(s).
6. Wi-Fi models feature long-range operation.
7. RGBW40 3-fixture kits must use the 3HP and 5HP surface aerator 3-piece sectional float.





Stainless Steel  
Components for  
Durability



36 Pre-  
programmed Colors  
& DMX Controllable



Great for  
Fountains or  
Surface Aerators



Plug and Play  
Operation



Independently operated, DMX-controllable lighting fixtures







3/4HP AquatiClear™ Circulator

# AQUATICLEAR™

## Clog-Resistant Waterfront Management

AquatiClear™ by Kasco is a clog-resistant circulator that keeps water near docks, canals, and shorelines free of floating debris and foul odors. Utilizing patented Clean Current Technology™, AquatiClear features a prop guard with smooth, rounded tines that allow debris to slip by instead of collect around the unit, meaning continuous operation and less maintenance.



All packages include motor unit and power cord. Some packages include a mounting option. Control panels available separately.

Crown-like prop guard with smooth, rounded tines decreases clogging from floating algae and debris.

Versatile mounting options allow AquatiClear to direct the flow of water to address specific areas.





BEFORE

Clears Shorelines  
of Floating Debris



Debris Slips by  
Instead of Clogging



AFTER

Less Clogging  
Reduces  
Maintenance



Clean Current  
Technology™





# AQUATICLEAR™

## CLOG-RESISTANT CIRCULATOR

- 120V and 208-240V, single phase options
- Purchased as stand-alone unit, or as part of a Horizontal Float or Universal Mount package
- Universal Mounts include the Simple Swivel bracket
- Shallow Water Install Kit available
- Manage from shore with optional human-rated, GFCI-protected control panel (see page 66)



1/2, 3/4, & 1HP  
Available



Crown-like Prop Guard  
Decreases Clogging



2-Year Warranty



ETL Listed to UL  
& CSA Standards

HP	VOLT (V)	MODEL	CORD LENGTH									
			25 FT	50 FT	75 FT	100 FT	150 FT	200 FT	250 FT	300 FT	400 FT	500+ FT
UNIT ONLY PACKAGES - "C" (NO MOUNT)												
1/2	120	2400C	\$1,156	\$1,194	-	\$1,392	\$1,880	\$2,060	-	-	-	-
3/4	120	3400C	\$1,275	\$1,318	-	\$1,509	\$2,015	\$2,185	-	-	-	-
3/4	208-240	3400HC	-	\$1,317	-	\$1,508	\$2,079	\$2,282	\$2,482	\$2,587	\$3,104	Inquire
1	120	4400C	-	\$1,501	\$1,623	\$2,022	\$2,631	\$3,024	-	-	-	-
1	208-240	4400HC	-	\$1,549	-	\$1,734	\$2,239	\$2,461	\$2,837	\$2,954	\$3,258	Inquire
UNIT AND HORIZONTAL FLOAT PACKAGES - "CFM"												
1/2	120	2400CFM	\$1,691	\$1,729	-	\$1,927	\$2,415	\$2,595	-	-	-	-
3/4	120	3400CFM	\$1,810	\$1,853	-	\$2,044	\$2,550	\$2,720	-	-	-	-
3/4	208-240	3400HCFM	-	\$1,852	-	\$2,043	\$2,614	\$2,817	\$3,017	\$3,122	\$3,639	Inquire
1	120	4400CFM	-	\$2,036	\$2,158	\$2,557	\$3,166	\$3,559	-	-	-	-
1	208-240	4400HCFM	-	\$2,084	-	\$2,269	\$2,774	\$2,996	\$3,372	\$3,489	\$3,793	Inquire
UNIT AND UNIVERSAL MOUNT PACKAGES - "CDM" (CUSTOMER MUST SUPPLY PIPE)												
1/2	120	2400CDM	\$1,621	\$1,659	-	\$1,857	\$2,345	\$2,525	-	-	-	-
3/4	120	3400CDM	\$1,740	\$1,783	-	\$1,974	\$2,480	\$2,650	-	-	-	-
3/4	208-240	3400HCDM	-	\$1,782	-	\$1,973	\$2,544	\$2,747	\$2,947	\$3,052	\$3,569	Inquire
1	120	4400CDM	-	\$1,966	\$2,088	\$2,487	\$3,096	\$3,489	-	-	-	-
1	208-240	4400HCDM	-	\$2,014	-	\$2,199	\$2,704	\$2,926	\$3,302	\$3,419	\$3,723	Inquire

### Product Notes:

1. Prices in bold have quick disconnect installed on power cords.
2. Part number is the model combined with cord length (ex. 3400CDM150).
3. If AquatiClear is installed less than 1.5 ft. below the surface, a Shallow Water Install Kit is recommended. See page 39.



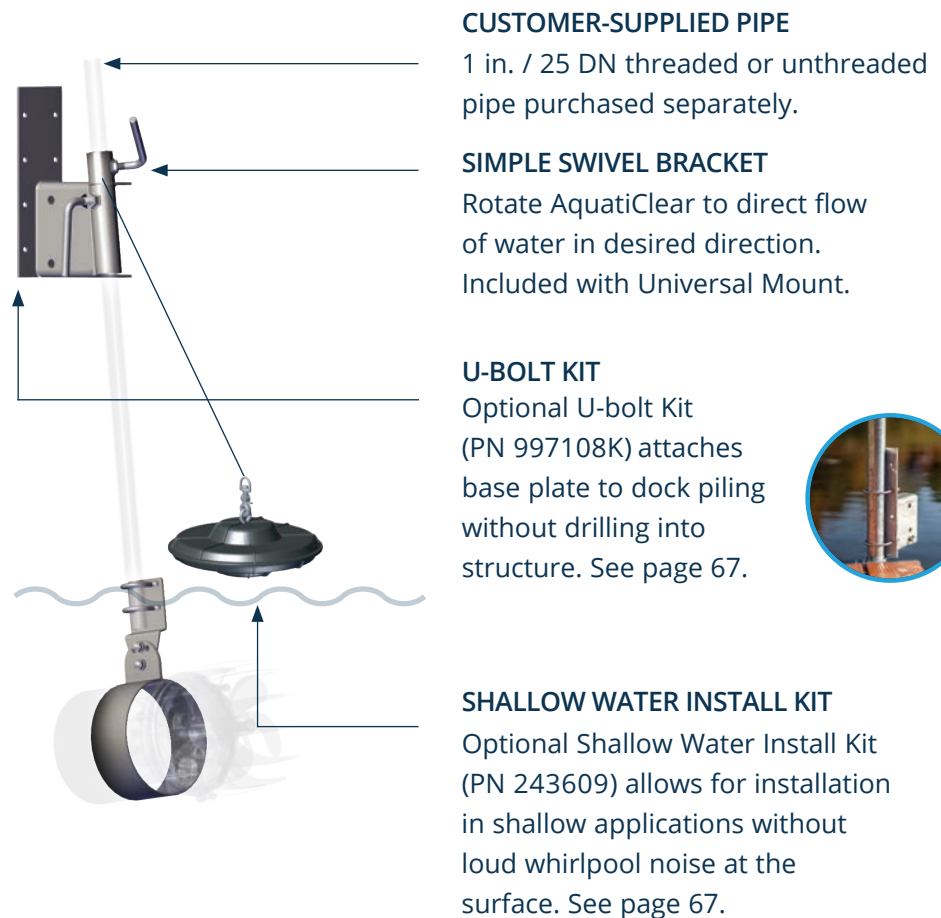
NEVER enter the water with  
electrical equipment connected  
and / or in operation.



# AQUATICLEAR MOUNTING OPTIONS

## UNIVERSAL MOUNT (INCLUDED WITH "CDM" MODELS)

Mount AquatiClear to a dock or similar structure and easily adjust its angle and depth. Adjust rotation with the patented Simple Swivel bracket. Mount includes a lifetime warranty.



## HORIZONTAL FLOAT (INCLUDED WITH "CFM" MODELS)

Secure AquatiClear on the surface with three ropes and tie-down loops. Three angles of orientation moves water in desired direction. Float includes a 3-year warranty.



Pair Kasco AquatiClear Circulators with Pond Probiotics for maximized results. See page 62 for details.





1/2HP De-icer

# DE-ICERS

## Over 50 Years of Dock Defense

By pushing warmer water up, Kasco De-icers create an opening at the water's surface, keeping boats and docks safe from damaging ice buildup. De-icers also keep fish and aquatic species healthy throughout the winter by allowing oxygen to enter the open water areas. Whether in a pond, lake, or marina, Kasco De-icers provide a hassle-free solution for maintaining clear, open water.




Packages include de-icing unit, power cord, and 2 mooring ropes. Mounting options and control panels available.

Creates more thrust than any other de-icing product. More thrust means more open water to protect your property.

Optional dock mount kits allow for easy angle and depth adjustments allowing De-icers to fit countless applications.





Creates More  
Open Water for the  
Best Ice Protection



Lightweight and  
Easy to Install



Stainless Steel  
Components for  
Durability



Provides a  
Healthy Aquatic  
Environment





# DE-ICERS

## PROTECT YOUR PROPERTY FROM ICE DAMAGE

- 120V and 208-240V, single phase options
- Install with included mooring ropes or optional mount kit
- Manage from shore with optional human-rated, GFCI-protected control panel (see page 66)



1/2, 3/4, & 1HP  
Available



Prevents Ice Buildup and Improves  
Aquatic Environment



3-Year Warranty



ETL Listed to UL  
& CSA Standards

## 2026 RETAIL PRICING (2026 PRICING GOES INTO EFFECT MARCH 4)

HP	VOLT (V)	MODEL	CORD LENGTH									
			25 FT	50 FT	75 FT	100 FT	150 FT	200 FT	250 FT	300 FT	400 FT	500+ FT
120V, SINGLE PHASE PACKAGES												
1/2	120	2400D	\$1,016	\$1,054	-	\$1,252	<b>\$1,740</b>	<b>\$1,920</b>	-	-	-	-
3/4	120	3400D	\$1,110	\$1,153	-	\$1,344	<b>\$1,850</b>	<b>\$2,020</b>	-	-	-	-
1	120	4400D	\$1,223	\$1,261	\$1,383	<b>\$1,782</b>	<b>\$2,391</b>	<b>\$2,784</b>	-	-	-	-
208-240V, SINGLE PHASE PACKAGES												
3/4	208-240	3400HD	-	\$1,152	-	\$1,343	<b>\$1,914</b>	<b>\$2,117</b>	Inquire	Inquire	Inquire	Inquire
1	208-240	4400HD	-	\$1,309	-	\$1,494	<b>\$1,999</b>	<b>\$2,221</b>	Inquire	Inquire	Inquire	Inquire

### Product Notes:

1. Prices in bold have quick disconnect installed on power cords.
2. Part number is the model combined with cord length (ex. 3400HD150).
3. De-icers should be placed 4-6 ft. below the surface, and 1 ft. off the bottom.
4. Mounting option and control panel sold separately.
5. All Kasco De-icers ship completely assembled. No hardware is needed unless using an optional Universal Mounting Kit.



De-icers create areas of open water which could be dangerous to people or animals nearby. Consider posting a warning sign near the area.



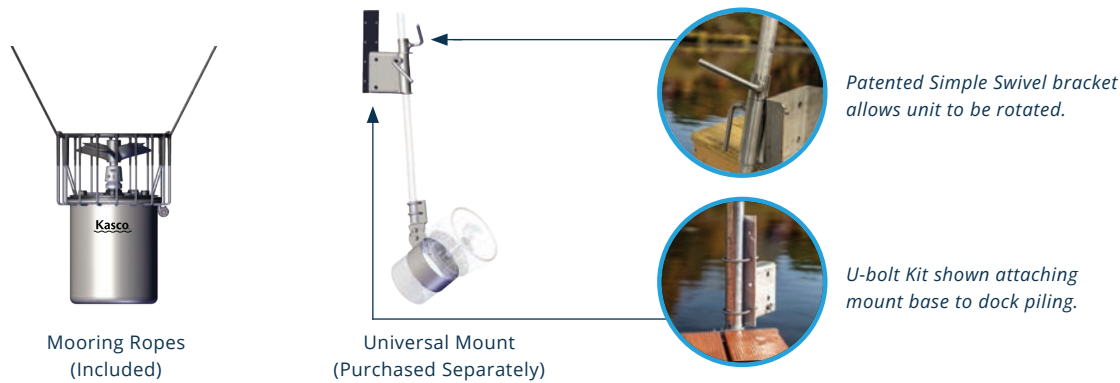
NEVER enter the water with electrical equipment connected and / or in operation.



# DE-ICER ACCESSORIES

## MOUNTING OPTIONS

Secure your Kasco De-icer to a dock or similar structure using the included ropes or optional mount kit. Choose depth, angle, and direction of water flow to achieve desired results. Use an optional U-bolt Kit with the Universal and Industrial Mount to attach the base plate to dock piling without drilling into structure. See page 65.



PART NUMBER	DESCRIPTION	CUSTOMER-SUPPLIED ITEMS	MSRP
243485	Universal Mount	Customer supplies 1 in. / 25 DN nominal threaded or unthreaded pipe and (8) 5/16 in. lag screws to mount base plate to dock. To install mount without drilling into dock, use available U-bolt Kit instead of lag screws.	\$425
243478	Universal Mount with Patented Simple Swivel Bracket		\$465
243484	Industrial Mount	Customer supplies 1.5 in / 40 DN nominal threaded or unthreaded pipe and (8) 5/16 in lag screws to mount base plate to dock. To install mount without drilling into dock, use available U-bolt Kit (2) instead of lag screws.	\$690
243479	Industrial Mount with Patented Simple Swivel Bracket		\$739
997108K	U-bolt Kit for drill-free installation (Each kit includes 2 U-bolts and associated hardware.)	-	\$18

- Product Notes:
- 1. Pipes should not exceed 10 ft. and can be threaded or unthreaded (supplied by customer).
  - 2. Industrial Mounts are suggested for units in harsh environments.

## CONTROL PANELS

Allow energy-saving automatic control of your Kasco De-icer. Select your desired temperature and/or time settings, and the control panel will do the rest.



PART NUMBER	MODEL	DESCRIPTION	MSRP
110225	C-10	C-10 Thermostat-Only Control Panel (for 120V Units)	\$150
120350	C-20	C-20 Timer & Thermostat Control Panel (for 120V Units)	\$335





1HP Surface Aerator

# SURFACE AERATORS

## High Oxygen Transfer at Extreme Value

Kasco Surface Aerators push high volumes of water into the air. This process increases the overall health of your water and keeps it thoroughly mixed. Introducing oxygen and water movement breaks up stratification, eliminates odor, discourages algae growth, and promotes a healthy aquatic environment.




Packages include motor unit, float, mooring ropes, and power cord. Control panels available.

Available in 1/2 - 5HP sizes and single or three phase options to fit a variety of applications.

Packages that include control panels are ETL Listed to UL and CSA standards.





Great for  
Backyard Ponds,  
Fish Farms, and More



For Continuous or  
Supplemental Use



Pair with  
WaterGlow  
Lighting Kit



Ideal in Depths  
Less than 8 ft.





# 1/2HP, 3/4HP, & 1HP

## SURFACE AERATOR

- 120V and 208-240V, single phase options
- 1-piece float blends in with water's surface and is easy to install
- Manage from shore with optional human-rated, GFCI-protected control panel (see page 66)



Lighting Packages  
Available



Shallow Operating  
Depths\*



2-Year Warranty



ETL Listed to UL  
& CSA Standards

HP	MODEL	CORD LENGTH									
		25 FT	50 FT	75 FT	100 FT	150 FT	200 FT	250 FT	300 FT	400 FT	500+ FT
120V, SINGLE PHASE PACKAGES											
1/2	2400AF	-	\$1,323	-	\$1,508	\$2,112	\$2,363	-	-	-	-
	2400AF (BTM SCR)	-	\$1,583	-	\$1,768	\$2,372	\$2,623	-	-	-	-
	2400A	\$1,056	\$1,094	-	\$1,292	\$1,780	\$1,960	-	-	-	-
3/4	3400AF	-	\$1,446	-	\$1,621	\$2,285	\$2,508	-	-	-	-
	3400AF (BTM SCR)	-	\$1,706	-	\$1,881	\$2,545	\$2,768	-	-	-	-
	3400A	\$1,150	\$1,193	-	\$1,384	\$1,890	\$2,060	-	-	-	-
1	4400AF	-	\$1,702	\$1,814	\$2,284	\$2,921	\$3,350	-	-	-	-
	4400AF (BTM SCR)	-	\$1,962	\$2,074	\$2,544	\$3,181	\$3,610	-	-	-	-
	4400A	\$1,263	\$1,301	\$1,423	\$1,822	\$2,431	\$2,824	-	-	-	-
208-240V, SINGLE PHASE PACKAGES											
3/4	3400HAF	-	\$1,513	-	\$1,658	\$2,251	\$2,451	\$2,666	\$2,818	\$3,329	Inquire
	3400HAF (BTM SCR)	-	\$1,773	-	\$1,918	\$2,511	\$2,711	\$2,926	\$3,078	\$3,589	Inquire
	3400HA	-	\$1,192	-	\$1,383	\$1,954	\$2,157	\$2,482	\$2,594	\$3,138	Inquire
1	4400HAF	-	\$1,726	-	\$1,856	\$2,526	\$2,767	\$2,982	\$3,089	\$3,237	Inquire
	4400HAF (BTM SCR)	-	\$1,986	-	\$2,116	\$2,786	\$3,027	\$3,242	\$3,349	\$3,497	Inquire
	4400HA	-	\$1,349	-	\$1,534	\$2,039	\$2,261	\$2,780	\$2,899	\$3,210	Inquire

\*1/2HP units operate in as little as 17.5 in. of water. 3/4HP units operate in as little as 17.5 in. of water. 1HP units operate in as little as 19 in. of water.

### Product Notes:

1. Prices in bold have quick disconnect installed on power cords.
2. Part number is the model combined with cord length (ex. 2400AF050).
3. "AF" models include unit and float; "BTM SCR" models include unit, float, and bottom screen.
4. "A" models include the motor unit only and do not include a float or bottom screen.
5. The correct control panel will depend on the voltage of the unit and if lights are being used. See page 66.



NEVER enter the water with  
electrical equipment connected  
and / or in operation.





Kasco Surface Aerators deliver up to 3.0 lbs. of O<sub>2</sub> per horsepower, per hour of operation, making them the most dependable and efficient units on the market.



# 2HP, 3HP, & 5HP

## SURFACE AERATOR

- 208-240V, single and three phase options
- Control panels are optional except for three phase non-"U" models
- Control panels feature human-rated GFCI-protection (see page 66)



Lighting Packages  
Available



Shallow Operating  
Depths\*



3-Year Warranty\*\*



ETL Listed to UL  
& CSA Standards

## FLOAT AND BOTTOM SCREEN MODELS (CONTROL PANEL OPTIONAL)

HP	MODEL	CORD LENGTH							
		50 FT	100 FT	150 FT	200 FT	250 FT	300 FT	400 FT	500+ FT
208-240V, SINGLE PHASE PACKAGES (CONTROL PANEL OPTIONAL)									
2	8400AF	\$3,683	\$4,279	\$4,494	\$4,707	\$4,920	\$6,006	\$9,348	Inquire
	8400AF (BTM SCR)	\$3,943	\$4,539	\$4,754	\$4,967	\$5,180	\$6,266	\$9,608	Inquire
3	3.1AF	\$4,601	\$5,103	\$5,279	\$6,112	\$6,257	\$6,224	\$9,611	Inquire
	3.1AF (BTM SCR)	\$4,861	\$5,363	\$5,539	\$6,372	\$6,517	\$6,484	\$9,871	Inquire
5	5.1AF	-	\$6,562	\$7,526	\$8,261	\$9,650	\$11,049	\$12,920	Inquire
	5.1AF (BTM SCR)	-	\$6,822	\$7,786	\$8,521	\$9,910	\$11,309	\$13,180	Inquire
208-240V, THREE PHASE PACKAGES (CONTROL PANEL OPTIONAL)									
2	U2.3AF	\$5,442	\$5,691	\$6,193	\$6,483	\$7,236	\$7,743	\$9,203	Inquire
	U2.3AF (BTM SCR)	\$5,702	\$5,951	\$6,453	\$6,743	\$7,496	\$8,003	\$9,463	Inquire
3	U3.3AF	\$6,140	\$6,401	\$6,904	\$7,533	\$7,685	\$9,468	\$10,035	Inquire
	U3.3AF (BTM SCR)	\$6,400	\$6,661	\$7,164	\$7,793	\$7,945	\$9,728	\$10,295	Inquire
5	U5.3AF	-	\$6,652	\$7,399	\$8,266	\$9,106	\$12,377	\$13,668	Inquire
	U5.3AF (BTM SCR)	-	\$6,912	\$7,659	\$8,526	\$9,366	\$12,637	\$13,928	Inquire

\*2HP units operate in as little as 20 in. of water. 3HP units operate in as little as 24 in. of water. 5HP units operate in as little as 26 in. of water.

\*\*Extended warranty available on 2HP, 3HP, and 5HP units.

### Product Notes:

1. Prices in bold have quick disconnect installed on power cords.
2. Part number is the model combined with cord length (ex. U2.3AF050).
3. "AF" models include unit and float; "BTM SCR" models include unit, float, and bottom screen.
4. 460 - 480V, three phase option available for special order in approved locations only. Contact Kasco for details.
5. The correct control panel will depend on the voltage of the unit and if lights are being used. See page 66.



NEVER enter the water with  
electrical equipment connected  
and / or in operation.



## FLOAT AND BOTTOM SCREEN MODELS (CA-3235 CONTROL PANEL INCLUDED)

HP	MODEL	CORD LENGTH							
		50 FT	100 FT	150 FT	200 FT	250 FT	300 FT	400 FT	500+ FT
208-240V, THREE PHASE PACKAGES (INCLUDES CA-3235 CONTROL PANELS)									
2	2.3AF	\$8,884	\$9,121	\$9,594	\$9,867	\$10,581	\$11,063	\$12,725	Inquire
	2.3AF (BTM SCR)	\$9,144	\$9,381	\$9,854	\$10,127	\$10,841	\$11,323	\$12,985	Inquire
3	3.3AF	\$9,453	\$9,699	\$10,175	\$10,708	\$10,916	\$12,601	\$13,470	Inquire
	3.3AF (BTM SCR)	\$9,713	\$9,959	\$10,435	\$10,968	\$11,176	\$12,861	\$13,730	Inquire
5	5.3AF	-	\$10,249	\$10,994	\$11,863	\$12,704	\$15,859	\$17,267	Inquire
	5.3AF (BTM SCR)	-	\$10,509	\$11,254	\$12,123	\$12,964	\$16,119	\$17,527	Inquire

**Product Notes:**

- Prices in bold have quick disconnect installed on power cords.
- Part number is the model combined with cord length (ex. 2.3AF050).
- "AF" models include unit and float; "BTM SCR" models include unit, float, and bottom screen.
- 460 - 480V, three phase option available for special order in approved locations only. Contact Kasco for details.

## UNIT-ONLY (A) MODELS (CONTROL PANEL OPTIONAL)

HP	MODEL	CORD LENGTH									
		25 FT	50 FT	75 FT	100 FT	150 FT	200 FT	250 FT	300 FT	400 FT	500+ FT
208-240V, SINGLE PHASE PACKAGES (CONTROL PANEL OPTIONAL)											
2	8400A	-	\$2,330	-	\$2,915	\$3,135	\$3,346	\$3,591	\$4,757	\$8,972	Inquire
3	3.1A	-	\$3,253	-	\$3,778	\$4,027	\$4,959	\$5,322	\$5,673	\$9,206	Inquire
5	5.1A	-	-	-	\$5,154	\$6,061	\$6,793	\$8,333	\$10,473	\$12,581	Inquire
208-240V, SINGLE PHASE PACKAGES (CONTROL PANEL OPTIONAL)											
2	U2.3A	-	\$3,954	-	\$4,231	\$4,774	\$5,087	\$5,881	\$6,452	\$8,222	Inquire
3	U3.3A	-	\$4,540	-	\$4,824	\$5,344	\$5,949	\$6,196	\$8,060	\$8,583	Inquire
5	U5.3A	-	-	-	\$5,106	\$5,871	\$6,689	\$7,618	\$11,086	\$12,722	Inquire

**Product Notes:**

- Prices in bold have quick disconnect installed on power cords.
- Part number is the model combined with cord length (ex. U2.3A050).
- "A" models include the motor unit only and do not include a float or bottom screen.
- 460 - 480V, three phase option available for special order in approved locations only. Contact Kasco for details.
- The correct control panel will depend on the voltage of the unit and if lights are being used. See page 66.





*RobustAire™ Small Cabinet*

# ROBUSTAIRE™ DIFFUSED AERATION

## Move & Aerate Large Volumes of Water

Restore your water's natural ecosystem by adding mixing and movement with RobustAire™. A shore-mounted compressor pushes air through self-weighted lines to a diffuser at the bottom of the pond, lake, or tank. This induces oxygen transfer and beneficial mixing to prevent weed overgrowth, algae, unpleasant odors, fish kills, and other issues.



Packages include dual-loop diffuser(s), compressor(s), and compressor cabinet. Some models include SureSink Weighted Tubing.

Patented AireGuard Cabinet Technology revolutionizes air movement for superior cooling and less maintenance.

Dual-loop diffuser assembly will not clog, includes strain relief, and will land right-side up every time.



Dual-action  
Filtering Removes  
Dust and Debris



Reliable in  
Tough Outdoor  
Conditions



Cabinet Design  
Ensures Quiet  
Operation



Filter Minder  
Turns Red When  
Cleaning is Needed





# ROBUSTAIRE™

## SMALL DIFFUSED AERATION SYSTEMS

- Includes 1-3 dual-loop diffuser assemblies, 1 compressor, small cabinet, and SureSink Weighted Tubing
- Cabinet can be mounted on the ground or on a vertical structure using the optional mounting bracket
- Ideal for small to mid-size ponds and lakes
- Remote manifold available for installations far from power



Small Cabinet with  
Patented AireGuard  
Cabinet Technology



Dual-loop Diffuser Provides  
Efficient Water Movement



Filter Maintenance Indicator  
for Easy Maintenance



Lifetime Warranty - Diffuser & Cabinet  
15-Year Warranty - Tubing  
3-Year Warranty - Compressor  
2-Year Warranty - Compressor Piston Cups & Cylinders

PART NUMBER		CABINET	NUMBER OF DIFFUSERS	WEIGHTED TUBING	COMPRESSOR	MSRP	REMOTE MANIFOLD MSRP
120V	208-240V						
RA1	RAH1	Small Cabinet	1	100 ft. 3/8 in. Tubing	(1) 1/4HP Compressor	\$3,015	\$3,315
RA1-NC	RAH1-NC	No-Cabinet	1	100 ft. 3/8 in. Tubing	(1) 1/4HP Compressor	\$1,631	\$1,931
RA2	RAH2	Small Cabinet	2	200 ft. 3/8 in. Tubing	(1) 1/4HP Compressor	\$3,576	\$3,876
RA2-NC	RAH2-NC	No-Cabinet	2	200 ft. 3/8 in. Tubing	(1) 1/4HP Compressor	\$2,412	\$2,712
RA3	RAH3	Small Cabinet	3	300 ft. 3/8 in. Tubing	(1) 1/2HP Compressor	\$4,353	\$4,653
RA3-NC	RAH3-NC	No-Cabinet	3	300 ft. 3/8 in. Tubing	(1) 1/2HP Compressor	\$3,134	\$3,434
DOUBLE PISTON (DP) SYSTEM							
RA2DP	RAH2DP	Small Cabinet	2	200 ft. 3/8 in. Tubing	(1) 1/2HP Compressor	\$3,840	\$4,140
RA2DP-NC	RAH2DP-NC	No-Cabinet	2	200 ft. 3/8 in. Tubing	(1) 1/2HP Compressor	\$2,589	\$2,889

### Product Notes:

1. Small Cabinets are ground-mount standard, but can be mounted off the ground on post or similar structure with available mounting bracket. See page 60.
2. Small Cabinet systems include 3/8 in. tubing as standard but will also work with 5/8 in. tubing. See page 60.
3. If less tubing is needed, subtract retail price of the rolls not needed. If more rolls are needed, order more rolls as separate line items.
4. Kasco recommends 5/8 in. tubing for any run longer than 300 ft.
5. Remote manifold systems allow installation long distances from power. These systems include remote valve manifold and valve box.
6. No-Cabinet systems include mounting bracket with cooling fan.
7. Replacement cabinet available. Includes air compressor but no tubing or diffusers. Call Kasco for details.



# ROBUSTAIRE™

## MEDIUM DIFFUSED AERATION SYSTEMS

- Includes 4-6 dual-loop diffuser assemblies, 2 compressors, and medium cabinet (SureSink Weighted Tubing not included)
- Cabinet is ground-mount only
- Ideal for mid-size ponds and lakes
- Remote manifold available for installations far from power



Medium Cabinet with Patented AireGuard Cabinet Technology



Dual-loop Diffuser Provides Efficient Water Movement



Filter Maintenance Indicator and External Gauges



Lifetime Warranty - Diffuser & Cabinet  
15-Year Warranty - Tubing  
3-Year Warranty - Compressor  
2-Year Warranty - Compressor Piston Cups & Cylinders

PART NUMBER		CABINET	NUMBER OF DIFFUSERS	WEIGHTED TUBING	COMPRESSOR	MSRP	REMOTE MANIFOLD MSRP
120V	208-240V						
RA4	RAH4	Medium Cabinet	4	Tubing Not Included	(2) 1/2HP Compressors	\$5,976	\$6,576
RA5	RAH5	Medium Cabinet	5	Tubing Not Included	(2) 1/2HP Compressors	\$6,307	\$6,907
RA6	RAH6	Medium Cabinet	6	Tubing Not Included	(2) 1/2HP Compressors	\$6,639	\$7,239

- Product Notes:
1. Medium Cabinets are ground-mount only. Mount cabinet on a dry, flat surface away from areas that may flood.
  2. Accommodates 3/8 in. and 5/8 in. weighted tubing, but must be ordered separately. See page 60.
  3. Kasco recommends 5/8 in. tubing for any run longer than 300 ft.
  4. Tubing accessories such as fitting kits and connector kits are available. See page 60.
  5. Remote manifold systems allow installation long distances from power. These systems include remote valve manifold and valve box.
  6. Replacement cabinet available. Includes air compressor but no tubing or diffusers. Call Kasco for details.



Kasco's experienced team of experts will help you select the right system for your application.



# ROBUSTAIRE™

## LARGE DIFFUSED AERATION SYSTEMS

- Includes 7-12 dual-loop diffuser assemblies, 3-4 compressors, and large cabinet (SureSink Weighted Tubing not included)
- Cabinet is ground-mount only
- Ideal for large industrial or recreational lakes
- Remote manifold available for installations far from power



Large Cabinet with  
Patented AireGuard  
Cabinet Technology



Dual-loop Diffuser Provides  
Efficient Water Movement



Filter Maintenance Indicator  
and External Gauges



Lifetime Warranty - Diffuser & Cabinet  
15-Year Warranty - Tubing  
3-Year Warranty - Compressor  
2-Year Warranty - Compressor Piston Cups & Cylinders

PART NUMBER		CABINET	NUMBER OF DIFFUSERS	WEIGHTED TUBING	COMPRESSOR	MSRP	REMOTE MANIFOLD MSRP
120V	208-240V						
RA7	RAH7	Large Cabinet	7	Tubing Not Included	(3) 1/2HP Compressors	\$10,625	\$11,625
RA8	RAH8	Large Cabinet	8	Tubing Not Included	(3) 1/2HP Compressors	\$10,946	\$11,946
RA9	RAH9	Large Cabinet	9	Tubing Not Included	(3) 1/2HP Compressors	\$11,300	\$12,300
RA10	RAH10	Large Cabinet	10	Tubing Not Included	(4) 1/2HP Compressors	\$13,023	\$14,023
RA11	RAH11	Large Cabinet	11	Tubing Not Included	(4) 1/2HP Compressors	\$13,356	\$14,356
RA12	RAH12	Large Cabinet	12	Tubing Not Included	(4) 1/2HP Compressors	\$13,677	\$14,677

### Product Notes:

1. Large Cabinets are ground-mount only. Mount cabinet on a dry, flat surface away from areas that may flood.
2. Accommodates 5/8 in. weighted tubing, but must be ordered separately. See page 60.
3. Kasco recommends 5/8 in. tubing for any run longer than 300 ft.
4. Tubing accessories such as fitting kits and connector kits are available. See page 60.
5. Remote manifold systems allow installation long distances from power. These systems include remote valve manifold and valve box.
6. Replacement cabinet available. Includes air compressor but no tubing or diffusers. Call Kasco for details.



Kasco's experienced team of  
experts will help you select the  
right system for your application.



# ROBUSTAIRE™ SYSTEM COMPARISON

## SMALL, MEDIUM, AND LARGE CABINETS

Below is a chart that compares details for Kasco's Small, Medium, and Large Cabinet Systems. Use these details to determine which system is best for your application.

All cabinets feature quiet operation, external maintenance indicators, easy-to-remove panels, and blend seamlessly with the environment.



**SMALL CABINET**  
(RA 1-3)



**MEDIUM CABINET**  
(RA 4-6)



**LARGE CABINET**  
(RA 7-12)

### CABINET DIMENSIONS

(L) 22 - 7/16 in.  
(W) 16 - 15/16 in.  
(H) 13 - 3/8 in.

(L) 25 - 7/8 in.  
(W) 20 - 11/16 in.  
(H) 19 - 5/8 in.

(L) 42 - 1/8 in.  
(W) 20 - 11/16 in.  
(H) 19 - 5/8 in.

### NUMBER OF DIFFUSERS

1, 2, or 3

4, 5, or 6

7, 8, 9, 10, 11, or 12

### NUMBER AND SIZE OF COMPRESSORS

(1) 1/4 or 1/2HP

(2) 1/2HP

(3 or 4) 1/2HP

### TUBING DIAMETER

Includes 3/8 in. tubing.  
Can accommodate 5/8 in. tubing (ordered separately).

Tubing ordered separately.  
Accommodates 3/8 in. or 5/8 in. tubing.

Tubing ordered separately.  
Accommodates 3/8 in. or 5/8 in. tubing.

### AIREGUARD CABINET TECHNOLOGY (PATENTED)

✓

✓

✓

### TYPICAL APPLICATION

Small to mid-size ponds and lakes

Mid-size ponds and lakes

Large recreational or industrial lakes

### CABINET MOUNTING

Ground-mount standard.  
Mounting bracket available with part number 774300.

Ground-mount only.

Ground-mount only.





# HOME SERIES DIFFUSED AERATION

## A Water Quality Boost for Backyard Ponds

Kasco Home Series Diffused Aeration Systems provide beneficial movement from the bottom up to improve water quality in backyard ponds. Using a shore-mounted compressor, air is pumped through tubing lines to a single-loop diffuser on the pond bottom. This continuous mixing prevents weed overgrowth, algae, unpleasant odors, and other issues.




Packages include single-loop diffuser(s), 1/4HP compressor, stainless steel cabinet, and SureSink Weighted Tubing. Optional mounting bracket available separately.

Cabinet design ensures quiet operation to peacefully blend with backyard environment.

Single-loop diffuser assembly will not clog, includes strain relief, and is self-weighted to land right-side up every time.





Cabinet Design  
Ensures Quiet  
Operation



Eliminates  
Overgrowth, Algae  
Buildup, and More



Easy Set-up,  
Installation, and  
Maintenance



Reliable in  
Tough Outdoor  
Conditions





# HOME SERIES

## DIFFUSED AERATION

- Includes 1-2 single-loop diffuser assemblies, 1 compressor, 1 cabinet, and SureSink Weighted Tubing
- Cabinet is stainless steel for longevity in outdoor conditions
- Cabinet can be mounted on the ground or on a vertical structure using the optional mounting bracket
- Quiet operation allows system to blend with backyard environment



Home Series Diffused  
Aeration Cabinet



Single-loop Diffuser  
Provides Efficient Water  
Movement



Ideal for Ponds up to  
2 acres and With Less  
Than 20 ft. of Depth



Lifetime Warranty - Diffuser  
15-Year Warranty - Tubing  
2-Year Warranty - Cabinet, Compressor,  
& All External Parts

PART NUMBER	CABINET	NUMBER OF DIFFUSERS	WEIGHTED TUBING	COMPRESSOR	VOLT (V)	MSRP
DA1	Home Series	1	(1) 100 ft. roll of 3/8 in. tubing	(1) 1/4HP Compressor	120	\$1,750
DAH1	Home Series	1	(1) 100 ft. roll of 3/8 in. tubing	(1) 1/4HP Compressor	208-240	\$1,750
DA2	Home Series	2	(2) 100 ft. rolls of 3/8 in. tubing	(1) 1/4HP Compressor	120	\$1,950
DAH2	Home Series	2	(2) 100 ft. rolls of 3/8 in. tubing	(1) 1/4HP Compressor	208-240	\$1,950

### Product Notes:

1. Home Series cabinets are ground-mount standard. Mounting Bracket available separately with part number 774440. See page 60.

## SIZING RECOMMENDATIONS

Use this table to determine if a DA1 (1 diffuser) or DA2 (2 diffusers) is needed based on pond size and depth.

POND SIZE	DA1	DA2
	POND DEPTH	POND DEPTH
1/4 Acre	6 - 8 ft.	3 - 6 ft.
1/2 Acre	9 - 12 ft.	6 - 8 ft.
1 Acre	13 - 20 ft.	9 - 12 ft.
2 Acres	-	13 - 20 ft.



Kasco's experienced team of experts will help you select the right system for your application.



# SYSTEM COMPARISON

## HOME SERIES VS ROBUSTAIRE™ SMALL CABINETS

Below is a chart comparing details for Kasco Home Series systems and RobustAire™ Small Cabinet systems. Use these details to determine which system is best for your application.



**HOME SERIES**  
(DA 1-2)



**ROBUSTAIRE™ SMALL CABINET**  
(RA 1-3)

### CABINET DIMENSIONS

(L) 12 - 1/2 in.  
(W) 11 in.  
(H) 11 - 1/2 in.

(L) 22 - 7/16 in.  
(W) 16 - 15/16 in.  
(H) 13 - 3/8 in.

### CABINET COLOR AND MATERIAL

Silver  
(Stainless Steel)

Natural Brown  
(Aluminum with Powder-coat Finish)

### NUMBER AND STYLE OF DIFFUSERS

1 or 2  
Single-loop Diffusers

1, 2, or 3  
Dual-loop Diffusers

### SIZE OF COMPRESSOR

1/4HP

1/4 or 1/2HP

### TUBING DIAMETER

Includes 3/8 in. tubing  
(Does not accommodate 5/8 in. tubing).

Includes 3/8 in. tubing.  
Can accommodate 5/8 in. tubing (ordered separately).

### AIREGUARD CABINET TECHNOLOGY (PATENTED)

x

✓

### TYPICAL APPLICATION

Small backyard ponds

Small to mid-size ponds and lakes

### CABINET MOUNTING

Ground-mount standard.  
Mounting bracket available with  
part number 774440.

Ground-mount standard.  
Mounting bracket available with  
part number 774300.



# DIFFUSED AERATION

## ACCESSORIES

The table below lists accessories and replacement items available for RobustAire™ and Home Series Diffused Aeration Systems.



*RobustAire™ Small Cabinet  
Mounting Bracket*

PART NUMBER	DESCRIPTION	SYSTEM	INCLUDES	MSRP
772100	RobustAire dual-loop diffuser assembly	RobustAire	(1) Diffuser assembly, (1) 3/8 in. barbed fitting, and (1) 5/8 in. barbed fitting	\$354
774300	RobustAire Small Cabinet mounting bracket	RobustAire (RA1-3 only)	(1) Mounting bracket and assembly hardware	\$350
772200	Home Series single-loop diffuser assembly	Home Series	(1) Diffuser assembly and (1) 3/8 in. barbed fitting	\$140
774440	Home Series Cabinet mounting bracket	Home Series	(1) Mounting bracket and assembly hardware	\$60
773380	3/8 in., 100 ft. roll of weighted tubing	RobustAire Home Series	Weighted tubing and fittings to attach to compressor, diffuser assembly, and extending tubing length	\$113.50
773385	3/8 in., 500 ft. roll of weighted tubing	RobustAire Home Series	Weighted tubing. 500 ft. rolls do not include fittings	\$500
773300	3/8 in. tube fitting kit (included in part number 773380)	RobustAire Home Series	(1) 3/8 in. x 3/8 in. barbed connector and (2) 3/8 in. hose clamps	\$8
773310	3/8 in. connector kits (10 pack)	RobustAire	(10) 3/8 in. x 3/8 in. barbed connectors and (20) 3/8 in. hose clamps	\$57
773580	5/8 in., 100 ft. roll of weighted tubing	RobustAire	Weighted tubing and fittings to attach to compressor, diffuser assembly, and extending tubing length	\$160.50
773585	5/8 in., 500 ft. roll of weighted tubing	RobustAire	Weighted tubing. 500 ft. rolls do not include fittings	\$760
773500	5/8 in. tube fitting kit (included in part number 773580)	RobustAire	(1) 5/8 in. x 5/8 in. barbed connector, (2) 3/8 in. x 5/8 in. barbed connectors, (2) 5/8 in. hose clamps, and (2) 3/8 in. hose clamps	\$19.67
773058	5/8 in. connector kits (10 pack)	RobustAire	(10) 5/8 in. x 5/8 in. barbed connectors and (20) 5/8 in. hose clamps	\$69
774323	Kit, barb, 3/8 MNPT x 5/8 Hose	RobustAire	(3) 3/8 MNPT x 5/8 in. barbed fitting (for use at cabinet)	\$30
774061	Kit, barb, 3/8 MNPT x 5/8 Hose	RobustAire	(6) 3/8 MNPT x 5/8 in. barbed fitting (for use at cabinet)	\$50

# TEICHAIRE

## COMPRESSORS

- 1/4, 1/2, and 3/4HP, 120V and 208-240V options
- Single phase
- Includes vibration mounts and 6 ft. power cord
- Quiet, oil-less piston compressors built for continuous duty, large aeration applications



Thermal Overload Protection  
and Will Restart Under Load



3-Year Warranty - Motor  
2-Year Warranty - Piston Cups & Cylinders



120V & 208-240V Models  
Are UL & CSA Recognized



208-240V Models  
Have CE Certification

PART NUMBER	HP	VOLT (V)	WEIGHT (LB)	AMP @ 0 PSI	AMP @ 20 PSI	MSRP
KM-60C	1/4	120	16	2.2	3.2	\$771
KM-60HC	1/4	208-240	16	1.1	1.6	\$771
KM-120C	1/2	120	19	3.0	4.0	\$992
KM-120HC	1/2	208-240	19	1.5	2.0	\$992
KM-200C	3/4	120	28	5.4	6.9	\$1,651
KM-200HC	3/4	208-240	28	3.1	3.7	\$1,651

Product Notes:

1. KM-60C, KM-60HC, KM-120C, and KM-120HC models include a Molex cord connector making them compatible with newer style RobustAire cabinets.
2. TeichAire compressors do not include the pressure relief valve, brass elbow, or air filter assembly. Please reuse these components from the old compressor.





# POND PROBIOTICS

## BENEFICIAL BACTERIA

Pond Probiotics are a safe, non-chemical approach to water quality management and produce a healthy, balanced ecosystem with its highly concentrated, unique blend of naturally occurring bacteria and enzymes. No irrigation restrictions or permit required.



Available as Quick-Dissolving Powder, Pucks, and Time-releasing Blocks



Water Must Be 55° F or Warmer



Removes Pond Scum and Floating Particles



Eliminates Waste, Dead Grass, and Foul Odors



Safe for People, Pets, and Livestock

PART NUMBER	DESCRIPTION	CONTENTS TREAT	MSRP
MZ8	(1) 8 oz. WS bag	Up to 1/2 acre-ft.	\$14
MZ8C	(40) 8 oz. WS bags (case)	Up to 20 acre-ft.	\$545
MZ25	25 lb. bag of bulk powder in pail (no WS bags)	Up to 25 acre-ft.	\$600
MZMP7	Muck Pucks - 7 lb. pail with 266 pucks	Up to 10 ft. <sup>2</sup> per puck	\$98
MZMB5	Muck Block - (1) 6 lb. block	Up to 6 acre-ft.	\$92

- Product Notes:
- 1. WS = Water soluble bag.
  - 2. One acre-foot (1 acre of surface area with 1 ft. of depth) = 325,851 gallons.
  - 3. To determine gallons: length (ft.) x width (ft.) x avg. water depth (ft.) x 7.48 = gallons.





BEFORE



AFTER

### Quick-Dissolving Powder

For small ponds and water gardens. Reapply every 2-3 weeks.



### Muck Pucks

For small or medium ponds, as spot treatments. Reapply every 2-3 weeks.



### Muck Blocks

For medium ponds, large ponds, or feeder streams. Reapply every 30 days.



Combine Pond Probiotics with a Kasco aeration or circulation method for maximum water quality results.





# ACCESSORIES

Mounts, Control Panels, Protective Sleeving, & Much More

Kasco offers a robust selection of accessories that complement our main product offering, increasing effectiveness and convenience of our product offerings. Accessory items are designed to help Kasco products better fit your specific application and improve your experience.



Designed to enhance performance and simplify installation across a variety of Kasco products.

Wide range of accessories available to customize systems for specific needs and environments.

Improves product performance and convenience for a more efficient, tailored setup.

# UNIT MOUNTING OPTIONS

## MOUNTING KITS

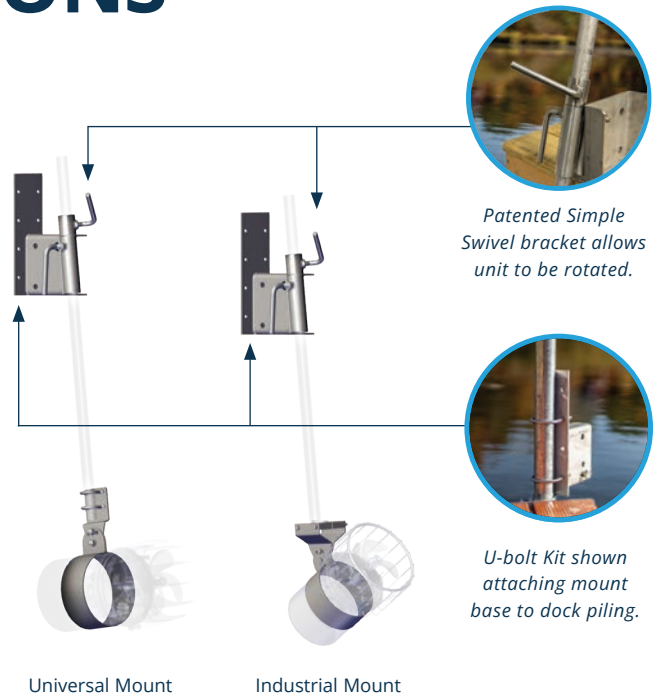
Secure your Kasco AquatiClear™ or De-icer to a dock, pier, walkway, or other in-water structure. Determine your depth, angle, and direction of water flow to achieve desired results. Optional U-bolt Kit allows mount kit to attach to dock piling without drilling into structure. Mounts include a lifetime warranty.

### Universal Mount Kits

- For 1/2, 3/4, and 1HP units
- Requires 1 in. / 25 DN nominal pipe, supplied by customer

### Industrial Mount Kits

- For 1/2, 3/4, and 1HP units
- Requires 1.5 in. / 40 DN nominal pipe, supplied by customer



PART NUMBER	DESCRIPTION	MSRP
243478	Universal Mount with patented Simple Swivel bracket (Includes all mount assembly hardware)	\$465
243479	Industrial Mount with patented Simple Swivel bracket (Includes all mount assembly hardware)	\$739
997108K	U-bolt Kit (Each kit includes 2 U-bolts and associated hardware)	\$18

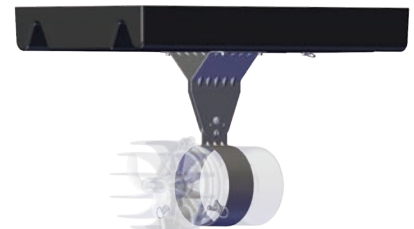
#### Product Notes:

1. Pipes should not exceed 10 ft. and can be threaded or unthreaded (supplied by customer).
2. Universal and Industrial Mounts require (8) 5/16 in. customer-supplied lag screws to mount base plate to dock.
3. To install mount without drilling into dock, use available U-bolt Kit instead of lag screws.
4. Industrial Mounts are recommended for units in harsh environments.
5. Universal Mounts require (1) U-bolt Kit, Industrial Mounts require (2) U-bolt Kits.

## HORIZONTAL FLOAT

Suspend your Kasco AquatiClear™ below the water's surface and safely anchor it to shore. Using stainless steel hardware and components, the float accommodates 1/2, 3/4, and 1HP units. Includes a 3-year warranty.

- 3 tie-down loops for secure installation
- Power cord strain relief clip
- 3 angles of unit orientation



PART NUMBER	DESCRIPTION	MSRP
213001	Horizontal Float with tie-down loops	\$535



# CONTROL PANELS

Control panels allow energy-saving automatic control of your Kasco unit. Select your desired settings, and the control panel will handle the rest.

- Panels are included for J and VFX Series Fountains
- Panels are optional for surface aerators except 2.3, 3.3, and 5.3HP units (non-"U" units)
- Surface aerator control panels will depend on voltage of the unit and if lights are used (refer to the table below)



PART NUMBER	MODEL	USE WITH				CONTROLLED FUNCTION	BASED ON	GROUND FAULT PROTECTION	MSRP
		DE-ICER (Optional)	FOUNTAIN (J & VFX SERIES) (Included)	SURFACE AERATOR (Optional)	AQUATICLEAR (Optional)				
120V, SINGLE PHASE UNITS									
110225	C-10	1/2, 3/4, 1HP	-	-	-	Unit only	Thermostat	N/A	\$150
120350	C-20	1/2, 3/4, 1HP	-	-	-	Unit only	Timer and thermostat	N/A	\$335
125250	C-25	-	1/2**, 3/4, 1HP	1/2, 3/4, 1HP	1/2, 3/4, 1HP	Unit and lights	(1) Timer for unit (1) Photocell for lights	6-milliamp (human-rated)	\$420
208-240V, SINGLE PHASE UNITS									
176006	C-85	-	3/4, 1, 2HP	3/4, 1, 2HP <i>with lights</i>	-	Unit and lights	(1) Timer for unit (1) Timer for lights	6-milliamp (human-rated)	\$2,369
176091	C-95	-	3, 5HP	3, 5HP <i>with lights</i>	-	Unit and lights	(1) Timer for unit (1) Timer for lights	6-milliamp (human-rated)	\$2,366
176332	C-220	3/4, 1HP	-	3/4, 1HP, 2HP	3/4, 1HP	Unit only	(1) Timer for unit	6-milliamp (human-rated)	\$1,350
176333	C-230	-	-	3, 5HP	-	Unit only	(1) Timer for unit	6-milliamp (human-rated)	\$1,400
208-240V, THREE PHASE UNITS									
176210	CA-3235	-	-	2, 3, 5HP*	-	Unit only	(1) Timer for unit	30-milliamp (equipment-rated)	\$3,500
176200	CF-3235	-	2, 3, 5HP	2, 3, 5HP <i>with lights</i>	-	Unit and lights	(1) Timer for unit (1) Timer for lights	5-milliamp (human-rated)	\$4,450
176204	CF-3075	-	7.5HP***	-	-	Unit and lights	(1) Timer for unit (1) Timer for lights	5-milliamp (human-rated)	\$4,150

\*2.3, 3.3, and 5.3HP surface aerators include a CA-3235 control panel. Control panels are optional for all other surface aerator models (including "U" models).

\*\*1/2HP is only offered for VFX Series Fountains.

\*\*\*7.5HP is only offered for J Series Fountains.

Product Notes:

1. Test GFCI every 30 days after unit installation.
2. For electrical wiring, follow all codes and consult qualified electrician.



NEVER enter the water with electrical equipment connected and / or in operation.

# EXTRAS

Get the most from your Kasco unit with the accessories listed below. From strain reliefs and protective cord sleeves to quick disconnects, Kasco has what you need to keep your unit operating at its best.



Stainless Steel Protective Cord Sleeve is available. Contact Kasco for pricing.

PART NUMBER	DESCRIPTION	MSRP
243609	AquatiClear™ Shallow Water Install Kit	\$125
636400	Optional 3-point strain relief conversion kit for 16-gauge through 10-gauge cords	\$140
636175	Quick disconnect added to 50 ft. or 100 ft. power cord for units (Quick disconnect comes standard on 100 ft. cords for all 1HP (120V), 2HP, 3.1HP, and 5.1HP units)	\$361
840303	3-light kit adapter for 3-piece sectional floats (For 2, 3, and 5HP Surface Aerators)	\$50.25
840306	6-light kit adapter for 3-piece sectional floats (For 2, 3, and 5HP Surface Aerators)	\$350
997108K	U-bolt Kit for Universal and Industrial Mount Kits allows installation without drilling into structure (each kit includes 2 U-bolts and associated hardware)	\$18
243465	Replacement anode for 1/2 in. motor shaft (1/2 - 1HP units)	\$18.87
840465	Replacement anode for 5/8 in. motor shaft (2 - 7.5HP units)	\$45
240170	Prop for 1/2HP Surface Aerators and De-icers	\$29.31
340125K	Prop for 3/4HP Surface Aerators and De-icers	\$35.89
440430	Prop for 1HP Surface Aerators and De-icers	\$55
240180	Prop for 1/2HP AquatiClear™ Circulators	\$40
340135	Prop for 3/4HP AquatiClear™ Circulators	\$50
440435	Prop for 1HP AquatiClear™ Circulators	\$60
240595K	2400VX Prop for 1/2HP VFX Fountains	\$32.15
340595K	3400VX Prop for 3/4HP VFX Fountains	\$37.80
440600K	4400VX Prop for 1HP VFX Fountains	\$69
821114	6-blade Prop for 2HP VFX Fountains	\$334
821124	6-blade Prop for 5HP VFX Fountains	\$325
Multiple	Protective cord sleeving available for all cord lengths	Contact Kasco for pricing.
990926	Food grade mineral oil option	Contact Kasco for pricing.



# WARRANTY INFORMATION

## STANDARD WARRANTY

Kasco Marine, Inc. warrants products to be free from defects in material or workmanship under normal use and service. This warranty excludes damage to the equipment from improper handling or installation as well as damage caused by environmental factors (examples include but are not limited to: cuts in or crushing of the power cord, damage to mooring lines and ropes, foreign objects causing damage to props or motor shafts, and improper power feeds). The Kasco Marine, Inc. obligation under this warranty is limited to replacing or repairing, free of charge, any defective part within the warranty period.

All units sent back to the factory or authorized repair center should be accompanied by the repair form, found at [kascomarine.com](http://kascomarine.com). Customer is responsible to pay shipping charges.

## WARRANTY IS VOID IF

1. The product is not maintained according to the maintenance recommendations supplied in owner's manual.
2. The equipment is returned for repair without the power cord.
3. The unit, control panel, or power cord are altered in any way from the original shipment. Cuts in the power cord are not covered under warranty.
4. The equipment is damaged by unauthorized tampering.
5. The sacrificial zinc anode around the motor shaft shows significant deterioration (not maintained according to recommendations supplied in the owner's manual).

## EXTENDED WARRANTY

The extended warranty is an additional 2 years beyond the 3-year warranty. See below for program details. The extended warranty must either be:

- Ordered at the same time and on the same P.O. as the unit.
    - *Please include the extended warranty as a separate line item.*
- OR
- Added to stocked units no more than 180 days after manufacture.
    - *To add an extended warranty to a stock unit, send a P.O. to Kasco with the appropriate extended warranty part number (see table below) and the serial number(s) of the warrantied units.*

Eligible Products:

- 2HP J Series Fountains
- 2 and 5HP VFX Fountains
- 2, 3, and 5HP Surface Aerators

HP	J SERIES FOUNTAINS	VFX FOUNTAINS	SURFACE AERATORS	MSRP
2		EW2F		\$1,000
3		EW3F		\$1,200
5		EW5F		\$ 1,450

# WARRANTY PERIODS

(INCLUDES CONTROL PANEL)

## J SERIES FOUNTAINS

- 3/4 and 1HP: 2 years
- 2HP: 3 years
- 3, 5, and 7.5HP: 5 years

## VFX SERIES FOUNTAINS

- 1/2, 3/4, and 1HP: 2 years
- 2 and 5HP: 3 years

## WATERGLOW LIGHTING

- RGBW18 LED: 3 years
- W25 LED: 3 years
- RGB LED: 2 years
- Composite LED: 2 years
- Stainless Steel LED: 3 years
- RGBW40: 5 years
- Universal Lighting: 2 years

## AQUATICLEAR™ CIRCULATORS

- 1/2, 3/4, and 1HP: 2 years

## DE-ICERS

- 1/2, 3/4, and 1HP: 3 years

## SURFACE AERATORS

- 1/2, 3/4, and 1HP: 2 years
- 2, 3, and 5HP: 3 years

## ROBUSTAIRE™ DIFFUSED AERATION SYSTEMS

- Diffuser: Lifetime
- Cabinet: Lifetime
- Tubing: 15 years
- Compressor Motor: 3 years
- Compressor Piston Cup: 2 years
- Compressor Cylinder: 2 years

## HOME SERIES DIFFUSED AERATION SYSTEMS

- Diffuser: Lifetime
- Cabinet: 2 years
- Tubing: 15 years
- Compressor Motor: 2 years
- Compressor Piston Cup: 2 years
- Compressor Cylinder: 2 years

## REPLACEMENT (R) UNITS

- 1/2, 3/4, and 1HP: 2 years
- 2, 3, and 5HP: 3 years
- 7.5HP: 3 years

**NOTE:** Pricing and availability for replacement "R" units is available in distributor portal accounts.

## DISTRIBUTOR TOOLS



Kasco Website  
[kascomarine.com](http://kascomarine.com)



Distributor Portal  
[distributors.kascomarine.com](http://distributors.kascomarine.com)



Online Training



Qualified Lead Routing



Dedicated Customer Service



# MAP, PRODUCT RETURN, & REPAIR

## MAP (MINIMUM ADVERTISED PRICING)

MAP on fountains, surface aerators, AquatiClear™ Circulators, De-icers, WaterGlow Lighting, RobustAire™, Home Series, and Pond Probiotics is full retail.

Prices are subject to change without notice and are not guaranteed for the entire year.

## NEW OR UNUSED PRODUCT RETURN <https://kascomarine.com/products/repair-centers/>

If an item has not entered the water, it can be returned to Kasco:

1. Contact Kasco to receive an RMA number and RMA form.
2. Package the item(s) adequately (original packaging preferred) and return to Kasco with completed RMA form and RMA number on the shipping label or written on the box.

## IMPORTANT

- 10% restocking fee will be applied to all returns.
- Additional fees may apply for partial returns.
- An item will not be accepted for return if it has been in the water.
- Kasco will not reimburse for product that was damaged during return shipment.
- Only new, clean, and unused items may be returned for credit.
- Items may not be returned after 6 months from the time of purchase.

## REPAIR <https://kascomarine.com/products/repair-centers/>

Equipment can be shipped to Kasco or an authorized service center for a repair estimate. Contact us if you'd like to find an authorized repair center near you. Kasco aims to provide a free cost estimate as soon as possible. After customer approval, the repair can be made in just a few days.

- Please include upper pump housing or wire cage for aerators and De-icers.
- Kasco is not responsible for shipping damage from customer to Kasco.
- Do not send floats. Kasco will charge \$200 for float disassembly and cleaning.
- It is the responsibility of the customer to ship and pay freight to Kasco.

# SHIPPING DETAILS

Kasco offers hassle-free logistical support to our customers. While we do accommodate shipment arranged by you or a third party, there are compelling benefits to allowing Kasco's Logistics Team to arrange all your shipments. We have negotiated extremely competitive rates with our preferred carriers and are excited to pass that savings along to you.

Additionally, all shipments arranged by Kasco are FOB destination, insured by us until they reach your location. In the event of loss or damage during shipping, simply notify our Customer Service Team and provide as much detail as possible, including photos of any damage. Once we have confirmed loss or damage, we will ship a replacement and take care of the claim. You can reach our Logistics Team at [logistics@kascomarine.com](mailto:logistics@kascomarine.com).

## FREIGHT QUOTES

Please email freight quotes to [support@kascomarine.com](mailto:support@kascomarine.com) and include:

- Shipping address
- Commercial or residential
- Offload or lift gate requirements
- Delivery notification contact info

**NOTE:** Some addresses are extended delivery areas and additional charges may apply. Quotes are estimates, valid for 30 days, and may vary.

## MOTOR FREIGHT ONLY SHIPMENTS

2HP and larger units with power cords longer than 400 ft. ship motor freight only.

## KASCO PATENTS

Scan the QR code below for a full list of Kasco patent and patent-pending information.







# Kasco®

**MOVING WATER FORWARD, SINCE 1968**

[kascomarine.com](http://kascomarine.com) | 715.262.4488 | [support@kascomarine.com](mailto:support@kascomarine.com)

800 Deere Road, Prescott, WI U.S.A. 54021