



# 50 HZ DE-ICER

## OVERVIEW

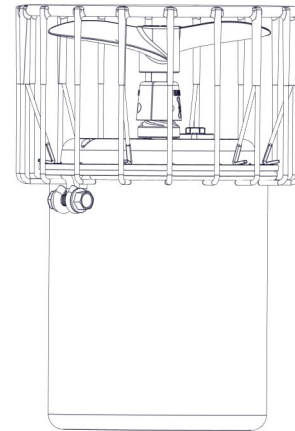
- Complete package includes:
  - Motor unit
  - 6m mooring lines
  - Rubber 10m power cord or 1m stub cord
- CE Marked
- Saltwater compatible
- Packaged for convenient shipping

## MOTOR UNIT

- 1/2, 3/4, or 1HP motor, 230V single phase
- 1450 RPM
- Oil cooled
- Continuous duty rated
- Long-life bearings
- Thermal overload protection
- Fully utilized heavy-duty carbon ceramic mechanical seal
- Series 300 stainless steel can
- Engineering grade thermoplastic top
- Sacrificial anode installed on 316 stainless steel shaft
- Custom engineered UV-resistant thermoplastic propeller
- Coated stainless steel cage

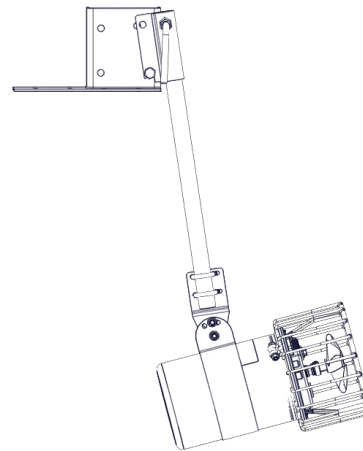
## POWER CABLE

- 10m or 1m stub cord
- Rubber jacket, 3-conductor power cord with earth conductor
- Potted quick disconnect and stainless steel strain relief standard on all stub cords
- Flex sleeve cord protection on stub option

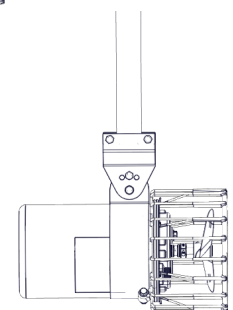


## MOUNT OPTIONS

- Universal Dock Mount
  - Complete 300-series stainless steel construction
  - Multiple angling options
  - User supplies 25mm pipe, up to 3m long
- Industrial Dock Mount
  - Complete 300-series stainless steel construction
  - Multiple angling options
  - User supplies 25mm pipe, up to 3m long



Universal Mount



Industrial Mount



# 50 HZ DE-ICER

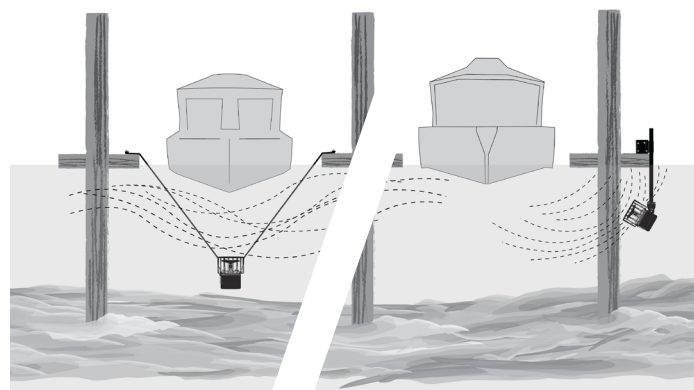
## OVERVIEW

Model	HP	Voltage / Phase / Hz	Amperage	Locked Rotor Amps	Thrust (kg.)	Min. Depth of Operation*
2400ED	1/2	230 / 1 / 50	2.2	5.3	11.8	1.2m
3400ED	3/4	230 / 1 / 50	3.5	9	13.4	1.2m
4400ED	1	230 / 1 / 50	3.7	10	16.8	1.2m

\*Will operate in less depth but may cause bottom disturbance.

## WIRE SIZE

	Cord Length			
	10m	30m	60m	90m
2400ED	1.5mm <sup>2</sup>	1.5mm <sup>2</sup>	2.5mm <sup>2</sup>	2.5mm <sup>2</sup>
3400ED	1.5mm <sup>2</sup>	1.5mm <sup>2</sup>	2.5mm <sup>2</sup>	2.5mm <sup>2</sup>
4400ED	1.5mm <sup>2</sup>	1.5mm <sup>2</sup>	2.5mm <sup>2</sup>	4mm <sup>2</sup>



Vertical suspension

Dock & piling mount

